

## Product datasheet for **RC211985**

### Plasma Kallikrein 1B (KLKB1) (NM\_000892) Human Tagged ORF Clone

#### Product data:

Product Type:	Expression Plasmids
Product Name:	Plasma Kallikrein 1B (KLKB1) (NM_000892) Human Tagged ORF Clone
Tag:	Myc-DDK
Symbol:	Plasma Kallikrein 1B
Synonyms:	KLK3; PKK; PKKD; PPK
Mammalian Cell Selection:	Neomycin
Vector:	pCMV6-Entry (PS100001)
E. coli Selection:	Kanamycin (25 ug/mL)



[View online »](#)

ORF Nucleotide  
Sequence:

>RC211985 representing NM\_000892  
Red=Cloning site Blue=ORF Green=Tags(s)

TTTTGTAATACGACTCACTATAGGGCGGCCGGAATTCGTCGACTGGATCCGGTACCGAGGAGATCTGCC  
GCCCGCATCGCC

ATGATTTTATTCAAGCAAGCAACTTATTTTCATTTCTTGTGTTGCTACAGTTTCCTGTGGATGCTGACTC  
AACTCTATGAAAACGCCTTCTTCAGAGGTGGGATGTAGCTTCCATGTACACCCAAATGCCAATACTG  
CCAGATGAGGTGCACATTCCACCAAGGTGTTGCTATTCAAGTTTCTTCAGCAAGTTCATCAATGAC  
ATGGAGAAAAGTTTGGTTGCTTCTTGAAGATAGTGTTACAGGAACCCTGCCAAAAGTACATCGAACAG  
GTGCAGTTTCTGGACATTCTTGAAGCAATGTGGTCATCAAATAAGTGCTTGCCATCGAGACATTTATAA  
AGGAGTTGATATGAGAGGAGTCAATTTTAAATGTGTCTAAGGTTAGCAGTGTGAAGAATGCCAAAAAAGG  
TGCACCAATAACATTCGCTGCCAGTTTTTTTCATATGCCACGCAAACATTTACAAGGCAGAGTACCGGA  
ACAATTGCCTATTAAGTACAGTCCCGGAGGAACACCTACCGCTATAAAGGTGCTGAGTAACGTGGAATC  
TGGATTCTCACTGAAGCCCTGTGCCCTTCAGAAATTGGTTGCCACATGAACATCTTCCAGCATCTTGCG  
TTCTCAGATGTGGATGTTGCCAGGGTCTCACTCCAGATGCTTTTGTGTGTCGGACCATCTGCACCTATC  
ACCCCAACTGCCTCTTCTTTACATTCTATACAAATGTATGGAAAAATCGAGTCACAAAAGAAATGTTTGCT  
TCTTAAAACATCTGAAAGTGGCACACCAAGTTCCTCTACTCCTCAAGAAAACACCATATCTGGATATAGC  
CTTTTAACTGCAAAAAGAACTTTACCTGAACCTGCCATTCTAAAATTTACCCGGGAGTTGACTTTGGAG  
GAGAAGAATTGAATGTGACTTTTGTAAAGGAGTGAATGTTTGCCAAGAGACTTGACAAAAGATGATTCCG  
CTGTCAAGTTTCTCACTTATTCTTACTCCAGAAGACTGTAAGGAAGAGAAGTGAAGTGTCTTAAAGA  
TTATCTATGGATGGTTCTCCAAGTAGGATTGCGTATGGGACACAAGGGAGCTCTGGTACTCTTTGAGAT  
TGTGTAACACTGGGGCAACTCTGTCTGCACAACAAAAACAAGCACACGCATTGTTGGAGGAACAAACTC  
TTCTTGGGGAGAGTGGCCCTGGCAGGTGAGCCTGCAGGTGAAGCTGACAGCTCAGAGGCACCTGTGTGGA  
GGGTCACTCATAGGACACCAGTGGGTCCTCACTGCTGCCACTGCTTTGATGGGCTTCCCTGCAGGATG  
TTTGGCGCATCTATAGTGGCATTTTAAATCTGTGACAGATTACAAAAGATACACCTTTCTCACAAATAAA  
AGAGATTATTATTCACCAAAACTATAAAGTCTCAGAAGGGAATCATGATATCGCCTTGATAAAACTCCAG  
GCTCCTTTGAATTACACTGAATTCAAAAACCAATATGCCTACCTTCAAAGGTGACACAAGCACAATTT  
ATACCAACTGTTGGTAACCGGATGGGGCTTCTCGAAGGAGAAAGGTGAAATCCAAAATATTCTACAAA  
GGTAAATATTCTTTGGTAACAAATGAAGAATGCCAGAAAAGATATCAAGATTATAAATAACCCAACGG  
ATGGTCTGTGCTGGCTATAAAGAAGGGGAAAAGATGCTTGTGAAGGAGATTCAAGTGGTCCCTTAGTTT  
GCAAACACAATGGAATGTGGCGTTTGGTGGGCATCACCAGCTGGGGTGAAGGCTGTGCCCGCAGGGAGCA  
ACCTGGTGTCTACACCAAGTCGCTGAGTACATGGACTGGATTTAGAGAAAACACAGAGCAGTGTGGA  
AAAGCTCAGATGCAGTCACCAGCA

ACGCGTACGCGGCCGCTCGAGCAGAAACTCATCTCAGAAGAGGATCTGGCAGCAAATGATATCCTGGATT  
ACAAGGATGACGACGATAAGGTTTAA

**Protein Sequence:** >RC211985 representing NM\_000892  
 Red=Cloning site Green=Tags(s)

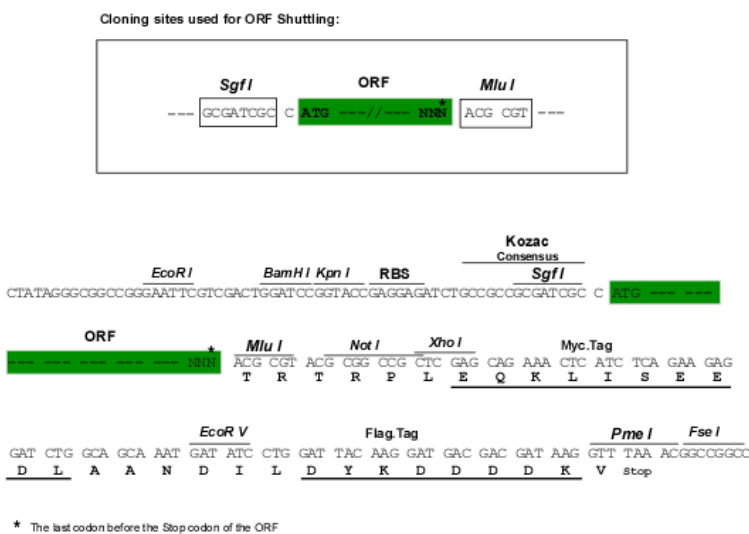
MILFKQATYFISL FATVSCGCL TQLYENAFFRGGDVASMYTPNAQYQMRCTFHPRCLLFSFLPASSIND  
 MEKRFGCFLKDSVTGTL PKVHRTGAVSGHSLKQCGHQISACHRDIYKGVDMRGVNFVSKVSSVEECQKR  
 CTNNIRCQFFSYATQTFHKA EYRNCLLKYSPPGGTPTAIKVL SNVESGFS LKPCALSEIGCHMNIFQHLA  
 FSDVDVARVLTPDAFVCRTICTYHPNCLFFTFYTNVWKIESQRNVCLLKTSESGTPSSSTPQENTISGYS  
 LLTCKRTLPEPCHSKIYPGVDFGGEELNVTFVKG VNVQCETCTKMIRCQFFTYSLLPEDCKEEKCKCF LR  
 LSMDGSPTRIA YGTQGSSGYSRLCNTGDNVCTTKTSTRIVGGTNSWGEWPWQVSLQVKLTAQRHL CG  
 GSLIGHQWVLTAAHCFDGLPLQDVWRIYSGILNLS DITKDTPFSQIKEIIHQNYK VSEGNHDIALIKLQ  
 APLNYTEFQKPICLPSK GDTSTIYTNCWVTGWGFSKEKGEIQNILQKVNIP LVTNEECQKRYQDYKITQR  
 MVCAGYKEGGKDACKGDSGGPLVCKHNGMWRLV GITSWGEGCARREQPGVYTKVAEYMDWILEKTQSSDG  
 KAQMQSPA

TRTRPLEQKLISEEDLAANDILDYKDDDDKV

**Chromatograms:** [https://cdn.origene.com/chromatograms/mk6200\\_h01.zip](https://cdn.origene.com/chromatograms/mk6200_h01.zip)

**Restriction Sites:** SgfI-MluI

**Cloning Scheme:**



**ACCN:** NM\_000892

**ORF Size:** 1914 bp

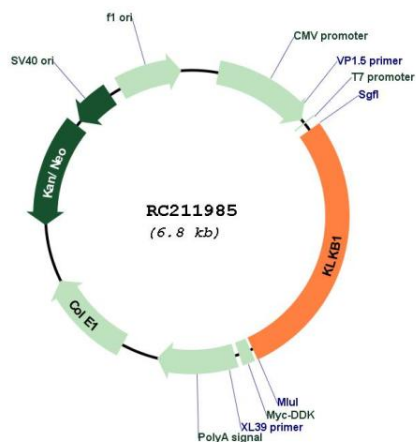
**OTI Disclaimer:** The molecular sequence of this clone aligns with the gene accession number as a point of reference only. However, individual transcript sequences of the same gene can differ through naturally occurring variations (e.g. polymorphisms), each with its own valid existence. This clone is substantially in agreement with the reference, but a complete review of all prevailing variants is recommended prior to use. [More info](#)

**OTI Annotation:** This clone was engineered to express the complete ORF with an expression tag. Expression varies depending on the nature of the gene.

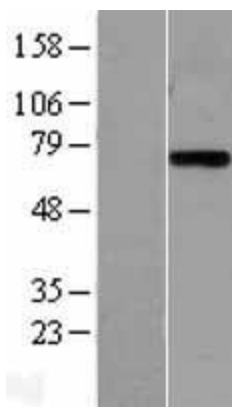
**Components:** The ORF clone is ion-exchange column purified and shipped in a 2D barcoded Matrix tube containing 10ug of transfection-ready, dried plasmid DNA (reconstitute with 100 ul of water).

<b>Reconstitution Method:</b>	<ol style="list-style-type: none"><li>1. Centrifuge at 5,000xg for 5min.</li><li>2. Carefully open the tube and add 100ul of sterile water to dissolve the DNA.</li><li>3. Close the tube and incubate for 10 minutes at room temperature.</li><li>4. Briefly vortex the tube and then do a quick spin (less than 5000xg) to concentrate the liquid at the bottom.</li><li>5. Store the suspended plasmid at -20°C. The DNA is stable for at least one year from date of shipping when stored at -20°C.</li></ol>
<b>RefSeq:</b>	<a href="#">NM_000892.5</a>
<b>RefSeq Size:</b>	2245 bp
<b>RefSeq ORF:</b>	1917 bp
<b>Locus ID:</b>	3818
<b>UniProt ID:</b>	<a href="#">P03952</a>
<b>Cytogenetics:</b>	4q35.2
<b>Domains:</b>	APPLE, Tryp_SPc, PAN
<b>Protein Families:</b>	Druggable Genome, Protease
<b>Protein Pathways:</b>	Complement and coagulation cascades
<b>MW:</b>	71.37 kDa
<b>Gene Summary:</b>	<p>This gene encodes a glycoprotein that participates in the surface-dependent activation of blood coagulation, fibrinolysis, kinin generation and inflammation. The encoded preproprotein present in plasma as a non-covalent complex with high molecular weight kininogen undergoes proteolytic processing mediated by activated coagulation factor XII to generate a disulfide-linked, heterodimeric serine protease comprised of heavy and light chains. Certain mutations in this gene cause prekallikrein deficiency. Alternative splicing results in multiple transcript variants encoding different isoforms. [provided by RefSeq, Jan 2016]</p>

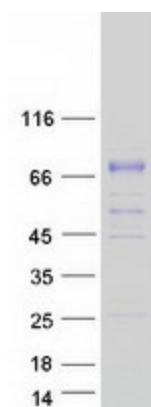
Product images:



Circular map for RC211985



Western blot validation of overexpression lysate (Cat# [LY400318]) using anti-DDK antibody (Cat# [TA50011-100]). Left: Cell lysates from untransfected HEK293T cells; Right: Cell lysates from HEK293T cells transfected with RC211985 using transfection reagent MegaTran 2.0 (Cat# [TT210002]).



Coomassie blue staining of purified KLKB1 protein (Cat# [TP311985]). The protein was produced from HEK293T cells transfected with KLKB1 cDNA clone (Cat# RC211985) using MegaTran 2.0 (Cat# [TT210002]).