

## Product datasheet for **RC211980**

### ABR (NM\_021962) Human Tagged ORF Clone

#### Product data:

Product Type:	Expression Plasmids
Product Name:	ABR (NM_021962) Human Tagged ORF Clone
Tag:	Myc-DDK
Symbol:	ABR
Synonyms:	MDB
Mammalian Cell Selection:	Neomycin
Vector:	pCMV6-Entry (PS100001)
E. coli Selection:	Kanamycin (25 ug/mL)



[View online »](#)

**ORF Nucleotide Sequence:**

>RC211980 representing NM\_021962  
 Red=Cloning site Blue=ORF Green=Tags(s)

TTTTGTAATACGACTCACTATAGGGCGGCCGGGAATTCGTCGACTGGATCCGGTACCGAGGAGATCTGCC  
 GCC**CGGATCGCC**

ATGGAGCCGCTCAGCCACCGGGGCTGCCGCGCTGTCTGGATCGACACCCTCTACAGCAACTTCAGT  
 ACGGGACGGACGAGTACGACGGAGAGGGGAATGAGGAGCAGAAGGGGCCCGGAGGGCTCAGAGACCAT  
 GCCGTACATCGATGAGTCGCCACCATGTCCCGCAGCTCAGCGCCCGCAGCCAGGGCGGGGGGATGGC  
 GTCTCCCGACTCCACCTGAGGGACTGGCTCCTGGGGTGAAGCAGGAAAGGCCTGGAGATGAGGAAGC  
 TGGTTCTCTCGGGTTCTTGGCCAGCGAAGAGATCTACATTAACCAGCTGGAAGCCCTGTTGCTGCCAT  
 GAAACCCCTGAAGGCCACCGCCACCCTCCAGCCCGTCTCACCATCCAGCAGATCGAGACCATCTTC  
 TACAAGATCCAGGACATCTATGAGATCCACAAGGAGTTCTATGACAACCTGTGCCCAAGGTGCAACAGT  
 GGGACAGCCAGGTCACCATGGGCCACCTTCCAGAAGCTGGCCAGCCAGCTCGGTGTGTACAAAGCGTT  
 TGTGATAAATAAAGTCGCTCTGGAGACAGCTGAGAAGTGCAGCCAGTCCAACAACCAAGTTCCAGAAG  
 ATCTCAGAGGAACTCAAAGTGAAAGTCCCAAGGACTCCAAGGACAGCCACACGTCTGTACCATGGAAG  
 CTCTGCTCTACAAGCCATTGACCGGGTCACTCGGAGCACCTAGTCTACACGACCTGTGAAGCACAC  
 ACCTGTGGACCACCCGACTACCCGCTGCTGCAGGATGCCCTCCGCATCTCCAGAACTTCTGTCCAGC  
 ATCAACGAGGACATCGACCCCGCCGGACTGCAGTGACAACGCCAAGGGGGAGACGCGACAGCTGGTGA  
 AGGACGGCTTCTGGTGAAGTGTGAGAGACTCCCGAAGCTGCGGCACGTCTTCTCTTTACAGATGT  
 CCTACTGTGTGCAAGCTGAAGAAGACCTTGCAGGGAAGCACCAGCAGTATGACTGTAAGTGGTACATC  
 CCCCTGGCCGACTGGTGTTCATCCCGGAGGAATCTGAGGCCAGCCCCAGGTGCACCCCTTCCCA  
 ACCATGAGCTGGAGGACATGAAGATGAAGATCTCTGCCCTCAAGAGTGAATCCAGAAGGAAAGCCAA  
 CAAAGGCCAGAGCCGGGCCATCGAGCGCTGAAGAAGAAGATGTTTGAGAATGAGTTCCTGCTGCTCTC  
 AACTCCCCACAATCCCGTTTCAAGATCCACAATCGGAATGGAAGAGTTACCTGTTCTACTGCTCTCGG  
 ACTACGAGAGGTGAGTGGAGAGAAGCAATTCAGAACTACAGAAGAAGGATCTCCAGGCCCTTGTCTCT  
 GAGCTCAGTGGAGCTCCAGGTGCTCACAGGATCTGTTTCAAGCTTAGGACTGTACACAACATCTCTGTC  
 ACCAGCAATAAAGACGACGATGAGTCTCCAGGACTCTATGGTTCCTTATGTCATCGTCCACTCTGCCA  
 AGGATTTAAGCAATCAGCCAACCTGTACTGTACCCTGGAGGTGGATTCTTTCGGCTATTTTGTGAGCAA  
 AGCCAAAACCAGGTGTTCCGGGACACAGCGGAGCCCAAGTGGGATGAGGAGTTTGAATCGAGCTGGAG  
 GGCTCCAGTCCCTGAGGATCCTGTGCTATGAGAAGTGTATGACAAGACCAAGGTCAACAAGGACAACA  
 ATGAGATCGTGGACAAGATCATGGGCAAAGGACAGATCCAGCTGGACCCCAAACCGTGGAGACCAAGAA  
 CTGGCACACGGACGTGATTGAGATGAACGGGATCAAAGTGAATTTTCCATGAAATTCACCAGCCGAGAT  
 ATGAGCCTGAAGAGGACCCCGTCCAAAAGCAGACCGGGCTCTTCGGTGTGAAGATCAGCGTGGTACGA  
 AGCGGGAGCGCTCCAAGGTGCCCTACATCGTCCGGCAGTGTGTGGAGGAGGTGGAGAAGAGGGGTATCGA  
 GGAGGTTGGCATCTACAGGATATCGGGCGTGGCCACGGACATCCAGGCGCTCAAGGCCGTCTTCGATGCC  
 AATAACAAGGACATCCTGCTGATGCTGAGTGACATGGACATCAACGCCATCGCCGGGACGCTCAAGCTGT  
 ACTTCCGGAACTGCCCAGCCGCTCCTCACGGACCGACTCTACCAGCCTTCAATGGAGGGCATCGCCCT  
 GTCAGACCCTGCTGCCAAGGAAAACCTGATGATGCACCTGCTCCGCTCCCTGCCGACCCCAACCTCATC  
 ACCTTCTCTTCTGCTGGAACACTTGAAGGGTTGCCGAGAAGGAGCCATCAACAAAATGTCACCTT  
 ACAACCTGGCTACCGTGTGGACCCACGTTACTGAGACCCTCAGAAGTGGAGAGCAAAGCACACCTCAC  
 CTCGGCTGCGGACATCTGGTCCCATGACGTCATGGCGCAGGTCCAGGTCTCTCTACTACTCTGCAGCAC  
 CCCCCATTTCTTCGAGAACTCAAGCGGAACACTGTACTTCTCCACCGACGTG

**ACCGT**ACGCGGCCGCTCGAGCAGAACTCATCTCAGAAGAGGATCTGGCAGCAATGATATCCTGGATT  
 ACAAGGATGACGACGATAAGGTTTAA

**Protein Sequence:** >RC211980 representing NM\_021962  
 Red=Cloning site Green=Tags(s)

```
MEPLSHRGLPRLSWIDTLYSNFSYGTDEYDGEENEEQKGPPEGSETMPYIDESPTMSPQLSARSQGGGDG
VSPTPPEGLAPGVEAGKGLEMRKLVLSGFLASEEIIYINQLEALLPMKPLKATATTSQPVLTIQQIETIF
YKIQDIYEIHKEFYDNLCPKVVQWDSQVTMGLHFQKLASQLGVYKAFVDNYKVALETAEKCSQSNNQFQK
ISEELKVKGPKDSKDSHTSVTMEALLYKPIDRVTRSTLVLHDLKHTPVDHPDYPLLQDALRISQNFSS
INEDIDPRRTAVTTPKGETRQLVKDGFLEVESESRKLRHVFLFTDVLKCAKLLKTSAGKHQQYDCKWYI
PLADLVFSPPESEASPQVHPFPDHELEDMKMKISALKSEIQKEKANKGQSRAIERLKKKMFENEFLLLL
NSPTIPFRIHNRNGKSYLFLSSDYERSEWREAIQKLQKKDLQAFVLSSVELQVLTGSCFKLRTVHNIPV
TSNKDDDESPGLYGFHVIHSAKGFQSANLYCTLEVDSFGYFVSKAKTRVFRDTAEPKWDEEFEIELE
GSQSLRILCYEKCYDKTKVNKDNNEIVDKIMGKQIQLDPQTVETKNWHTDVIEMNGIKVEFSMKFTSRD
MSLKRTSPSKKQTVGFVKISVVTKRERSKVPYIVRQCVEEVEKRGIEEVGIYRISGVATDIQALKAVFDA
NNKDILLMLSDMDINAIAGTLKLYFRELPELLTDRLYPAFMEGIALSDPAAKENCMHLLRSLPDPNLI
TFLFLLHLKRVAEKEPINKMSLHNLATVFGPTLLRPSEVESKAHLTSAADIWSDVMAQVQVLLYYLQH
PPISFAELKRNTLYFSTDV
```

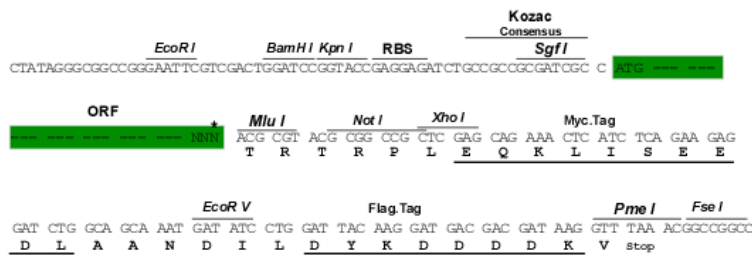
TRTRPLEQKLISEEDLAANDILDYKDDDDKV

**Chromatograms:** [https://cdn.origene.com/chromatograms/mk6478\\_b07.zip](https://cdn.origene.com/chromatograms/mk6478_b07.zip)

**Restriction Sites:** SgfI-MluI

**Cloning Scheme:**

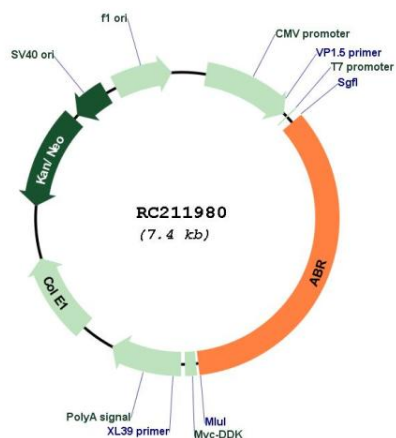
Cloning sites used for ORF Shuttling:



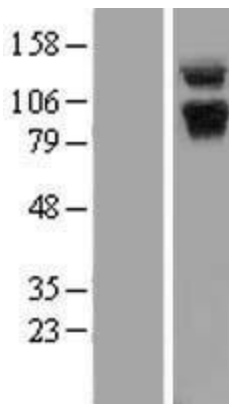
\* The last codon before the Stop codon of the ORF

<b>ACCN:</b>	NM_021962
<b>ORF Size:</b>	2577 bp
<b>OTI Disclaimer:</b>	The molecular sequence of this clone aligns with the gene accession number as a point of reference only. However, individual transcript sequences of the same gene can differ through naturally occurring variations (e.g. polymorphisms), each with its own valid existence. This clone is substantially in agreement with the reference, but a complete review of all prevailing variants is recommended prior to use. <a href="#">More info</a>
<b>OTI Annotation:</b>	This clone was engineered to express the complete ORF with an expression tag. Expression varies depending on the nature of the gene.
<b>Components:</b>	The ORF clone is ion-exchange column purified and shipped in a 2D barcoded Matrix tube containing 10ug of transfection-ready, dried plasmid DNA (reconstitute with 100 ul of water).
<b>Reconstitution Method:</b>	<ol style="list-style-type: none"><li>1. Centrifuge at 5,000xg for 5min.</li><li>2. Carefully open the tube and add 100ul of sterile water to dissolve the DNA.</li><li>3. Close the tube and incubate for 10 minutes at room temperature.</li><li>4. Briefly vortex the tube and then do a quick spin (less than 5000xg) to concentrate the liquid at the bottom.</li><li>5. Store the suspended plasmid at -20°C. The DNA is stable for at least one year from date of shipping when stored at -20°C.</li></ol>
<b>RefSeq:</b>	<a href="#">NM_021962.5</a>
<b>RefSeq Size:</b>	5300 bp
<b>RefSeq ORF:</b>	2580 bp
<b>Locus ID:</b>	29
<b>UniProt ID:</b>	<a href="#">Q12979</a>
<b>Cytogenetics:</b>	17p13.3
<b>Domains:</b>	C2, RhoGAP, RhoGEF, PH
<b>MW:</b>	97.4 kDa
<b>Gene Summary:</b>	This gene encodes a protein that is similar to the protein encoded by the breakpoint cluster region gene located on chromosome 22. The protein encoded by this gene contains a GTPase-activating protein domain, a domain found in members of the Rho family of GTP-binding proteins. Functional studies in mice determined that this protein plays a role in vestibular morphogenesis. Alternatively spliced transcript variants have been reported for this gene. [provided by RefSeq, Feb 2012]

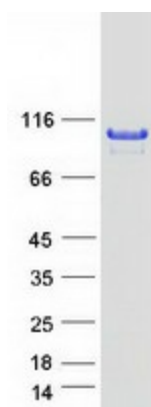
Product images:



Circular map for RC211980



Western blot validation of overexpression lysate (Cat# [LY411857]) using anti-DDK antibody (Cat# [TA50011-100]). Left: Cell lysates from untransfected HEK293T cells; Right: Cell lysates from HEK293T cells transfected with RC211980 using transfection reagent MegaTran 2.0 (Cat# [TT210002]).



Coomassie blue staining of purified ABR protein (Cat# [TP311980]). The protein was produced from HEK293T cells transfected with ABR cDNA clone (Cat# RC211980) using MegaTran 2.0 (Cat# [TT210002]).