

Product datasheet for **RC211976**

CFC1 (NM_032545) Human Tagged ORF Clone

Product data:

Product Type: Expression Plasmids
Product Name: CFC1 (NM_032545) Human Tagged ORF Clone
Tag: Myc-DDK
Symbol: CFC1
Synonyms: CFC1B; CRYPTIC; DTGA2; HTX2
Mammalian Cell Selection: Neomycin
Vector: pCMV6-Entry (PS100001)
E. coli Selection: Kanamycin (25 ug/mL)
ORF Nucleotide Sequence: >RC211976 representing NM_032545
Red=Cloning site Blue=ORF Green=Tags(s)

TTTTGTAATACGACTCACTATAGGGCGCCGGGAATTCGTCGACTGGATCCGGTACCGAGGAGATCTGCC
GCC**CGATCGC**C

ATGACCTGGAGGCACCATGTCAGGCTTCTGTTTACGGTCAGTTTGGCATTACAGATCATCAATTTGGGAA
ACAGCTATCAAAGAGAGAAAACATAACGGCGGTAGAGAGGAAGTCACCAAGGTTGCCACTCAGAAGCACCG
ACAGTCACCGCTCAACTGGACCTCCAGTCATTTCCGAGAGGTGACTGGGAGCGCCGAGGGCTGGGGCCG
GAGGAGCCGCTCCCCTACTCCCGGCTTTCGGAGAGGGTGCCTCCGCGCGCCGCGCTGCTGCAGGAACG
GCGGTACCTGCGTCTGGGCAGCTTCTGCGTGTGCCCGGCCACTTCACCGCCGCTACTGCGAGCATGA
CCAGAGGCGCAGTGAATGCGGCGCCCTGGAGCACGGAGCCTGGACCCTCCGCGCCTGCCACTCTGCAGG
TGATCTTCGGGGCCCTGCACTGCCTCCCCTCCAGACGCTGACCGCTGTGACCCGAAAGACTTCTCGG
CCTCCCACGCTCACGGCCGAGCGCCGGGGCGCGCCAGCCTGCTACTCTTGCTGCCCTGCGCACTCCT
GCACCGCCTCCTGCGCCGGATGCGCCCGCACCCCTCGGTCCCTGGTCCCTTCCGTCTCCAGCGGGAG
CGGCGCCCTGCGGAAGGCCGGGACTTGGGCATCGCCTT

ACGCGTACGCGGCGCTCGAGCAGAACTCATCTCAGAAGAGGATCTGGCAGCAAATGATATCCTGGATT
ACAAGGATGACGACGATAAGGTTTAA



[View online »](#)

Protein Sequence: >RC211976 representing NM_032545
Red=Cloning site Green=Tags(s)

MTWRHHVRLFFTDSLALQIINLGNYSYQREKHNGGREEVTKVATQKHRQSPLNWTSSHFGEVTGSAEGWGP
 EEPLPYSAFEGEGASARPRCCRNNGTCVLSGFCVCPAHFTGRYCEHDQRRSECGALEHGAWTLRACHLCR
 CIFGALHCLPLQTPDRCDPKDFLASHAHGPSAGGAPSLLLLLLPCALLHRLLRDPAPAHPRSLVPSVLQRE
 RRPCGRPGLGHRL

TRTRPLEQKLISEEDLAANDILDYKDDDDKV

Chromatograms: https://cdn.origene.com/chromatograms/mk6445_b03.zip

Restriction Sites: SgfI-MluI

Cloning Scheme:



ACCN: NM_032545

ORF Size: 669 bp

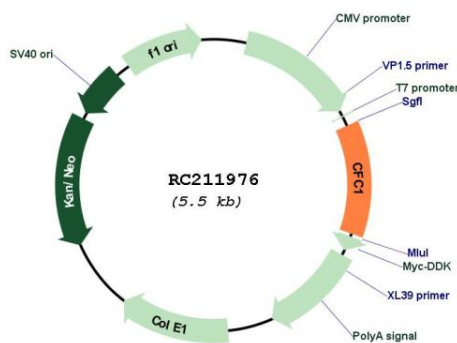
OTI Disclaimer: Due to the inherent nature of this plasmid, standard methods to replicate additional amounts of DNA in E. coli are highly likely to result in mutations and/or rearrangements. Therefore, OriGene does not guarantee the capability to replicate this plasmid DNA. Additional amounts of DNA can be purchased from OriGene with batch-specific, full-sequence verification at a reduced cost. Please contact our customer care team at custsupport@origene.com or by calling 301.340.3188 option 3 for pricing and delivery.

The molecular sequence of this clone aligns with the gene accession number as a point of reference only. However, individual transcript sequences of the same gene can differ through naturally occurring variations (e.g. polymorphisms), each with its own valid existence. This clone is substantially in agreement with the reference, but a complete review of all prevailing variants is recommended prior to use. [More info](#)

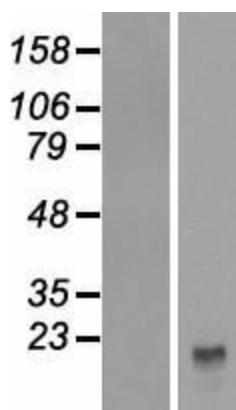
OTI Annotation: This clone was engineered to express the complete ORF with an expression tag. Expression varies depending on the nature of the gene.

Components:	The ORF clone is ion-exchange column purified and shipped in a 2D barcoded Matrix tube containing 10ug of transfection-ready, dried plasmid DNA (reconstitute with 100 ul of water).
Reconstitution Method:	<ol style="list-style-type: none"> 1. Centrifuge at 5,000xg for 5min. 2. Carefully open the tube and add 100ul of sterile water to dissolve the DNA. 3. Close the tube and incubate for 10 minutes at room temperature. 4. Briefly vortex the tube and then do a quick spin (less than 5000xg) to concentrate the liquid at the bottom. 5. Store the suspended plasmid at -20°C. The DNA is stable for at least one year from date of shipping when stored at -20°C.
RefSeq:	<u>NM_032545.4</u>
RefSeq Size:	1009 bp
RefSeq ORF:	672 bp
Locus ID:	55997
UniProt ID:	<u>P0CG37</u>
Cytogenetics:	2q21.1
MW:	24.4 kDa
Gene Summary:	<p>This gene encodes a member of the epidermal growth factor (EGF)- Cripto, Frl-1, and Cryptic (CFC) family, which are involved in signalling during embryonic development. Proteins in this family share a variant EGF-like motif, a conserved cysteine-rich domain, and a C-terminal hydrophobic region. The protein encoded by this gene is necessary for patterning the left-right embryonic axis. Mutations in this gene are associated with defects in organ development, including autosomal visceral heterotaxy and congenital heart disease. Alternatively spliced transcript variants encoding multiple isoforms have been observed for this gene. [provided by RefSeq, Jul 2012]</p>

Product images:



Circular map for RC211976



Western blot validation of overexpression lysate (Cat# [LY410067]) using anti-DDK antibody (Cat# [TA50011-100]). Left: Cell lysates from untransfected HEK293T cells; Right: Cell lysates from HEK293T cells transfected with RC211976 using transfection reagent MegaTran 2.0 (Cat# [TT210002]).