

Product datasheet for RC211974

CAPSL (NM_144647) Human Tagged ORF Clone

Product data:

Product Type: Expression Plasmids
 Product Name: CAPSL (NM_144647) Human Tagged ORF Clone
 Tag: Myc-DDK
 Symbol: CAPSL
 Mammalian Cell Selection: Neomycin
 Vector: pCMV6-Entry (PS100001)
 E. coli Selection: Kanamycin (25 ug/mL)
 ORF Nucleotide Sequence: >RC211974 ORF sequence
 Red=Cloning site Blue=ORF Green=Tags(s)

TTTTGTAATACGACTCACTATAGGGCGGCCGGAATTCGTCGACTGGATCCGGTACCGAGGAGATCTGCC
 GCC**CGATCGCC**

ATGGCGATCCAGGCCAAGAAAAAGCTCACACGGCCACCAACCCATTGAAAGACTCCGACTGCAGTGCC
 TGGCCAGGGGCTCTGCTGGGATCAAAGGACTTGGCAGAGTGTTTAGAATTATGGATGACGATAATAATCG
 AACCTTGATTTTAAAGAATTTATGAAAGGGTTAAATGATTATGCTGTGGTCATGAAAAAGAAGAGGTG
 GAAGAATTTCCGGAGGTTTGATAAAGATGAAATGGAACAATAGACTTCAATGAATTTCTCTCACAT
 TAAGACCTCCAATGTCCAGAGCCAGAAAAGAGGTAAATCATGCAAGCTTTTAGAAAGTTAGACAAGACTGG
 AGATGGTGTTATAACAATCGAAGACCTTCGTGAAGTATAAATGCAAAACACCACCAAAAGTACCAGAAT
 GGGGAATGGAGTGAGGAACAAGTATTTAGGAAATTTCTGGATAACTTTGATTACCCCTATGACAAAGATG
 GATTGGTGACCCCTGAGGAGTTCATGAACTACTATGCAGGTGTGAGCGCATCCATTGACTGATGTGTA
 CTTTCATCATGATGAGAACCCTGGAAGCTT

ACGCGTACGCGGCCGCTCGAGCAGAACTCATCTCAGAAGAGGATCTGGCAGCAATGATATCCTGGATT
 ACAAGGATGACGACGATAAGGTTTAA

Protein Sequence: >RC211974 protein sequence
 Red=Cloning site Green=Tags(s)

MAIQAKKKLTTATNPIERLRLQCLARGSAGIKGLGRVFRIMDDDDNRTLDFKEFMKGLNDYAVVMEKEEV
 EELFRFDKDGNGTIDFNEFLLTLRPPMSRARKEVIMQAFRKLDKTGDGVITIEDLREVYNKHHPKYQN
 GEWSEEQVFRKFLDNFSPYDKGLVTPPEEFMNYAGVSASIDTDVYFIIMMRTAWKL

TRTRPLEQKLISEEDLAANDILDYKDDDDKV

Chromatograms: https://cdn.origene.com/chromatograms/mk6316_h07.zip



[View online »](#)

Restriction Sites: SgfI-MluI

Cloning Scheme:



ACCN: NM_144647

ORF Size: 594 bp

OTI Disclaimer: The molecular sequence of this clone aligns with the gene accession number as a point of reference only. However, individual transcript sequences of the same gene can differ through naturally occurring variations (e.g. polymorphisms), each with its own valid existence. This clone is substantially in agreement with the reference, but a complete review of all prevailing variants is recommended prior to use. [More info](#)

OTI Annotation: This clone was engineered to express the complete ORF with an expression tag. Expression varies depending on the nature of the gene.

Components: The ORF clone is ion-exchange column purified and shipped in a 2D barcoded Matrix tube containing 10ug of transfection-ready, dried plasmid DNA (reconstitute with 100 ul of water).

Reconstitution Method:

1. Centrifuge at 5,000xg for 5min.
2. Carefully open the tube and add 100ul of sterile water to dissolve the DNA.
3. Close the tube and incubate for 10 minutes at room temperature.
4. Briefly vortex the tube and then do a quick spin (less than 5000xg) to concentrate the liquid at the bottom.
5. Store the suspended plasmid at -20°C. The DNA is stable for at least one year from date of shipping when stored at -20°C.

RefSeq: [NM_144647.2](#), [NP_653248.2](#)

RefSeq Size: 1019 bp

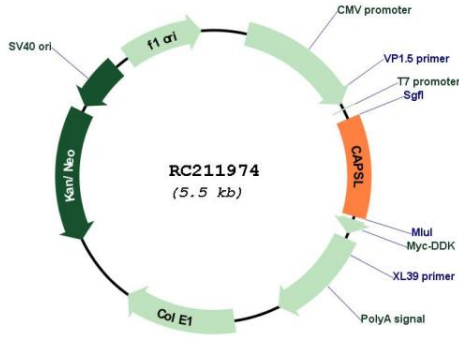
RefSeq ORF: 627 bp

Locus ID: 133690

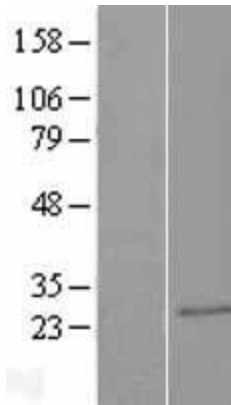
UniProt ID: [Q8WWF8](#)

Cytogenetics: 5p13.2
 MW: 23.1 kDa

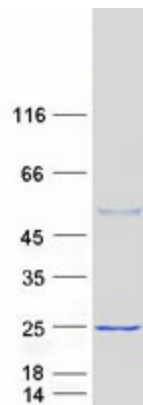
Product images:



Circular map for RC211974



Western blot validation of overexpression lysate (Cat# [LY408188]) using anti-DDK antibody (Cat# [TA50011-100]). Left: Cell lysates from untransfected HEK293T cells; Right: Cell lysates from HEK293T cells transfected with RC211974 using transfection reagent MegaTran 2.0 (Cat# [TT210002]).



Coomassie blue staining of purified CAPSL protein (Cat# [TP311974]). The protein was produced from HEK293T cells transfected with CAPSL cDNA clone (Cat# RC211974) using MegaTran 2.0 (Cat# [TT210002]).