

Product datasheet for RC211972

HABP4 (NM_014282) Human Tagged ORF Clone

Product data:

Product Type:	Expression Plasmids
Product Name:	HABP4 (NM_014282) Human Tagged ORF Clone
Tag:	Myc-DDK
Symbol:	HABP4
Synonyms:	IHABP-4; IHABP4; Ki-1/57; SERBP1L
Mammalian Cell Selection:	Neomycin
Vector:	pCMV6-Entry (PS100001)
E. coli Selection:	Kanamycin (25 ug/mL)
ORF Nucleotide Sequence:	>RC211972 representing NM_014282 Red=Cloning site Blue=ORF Green=Tags(s)

TTTTGTAATACGACTCACTATAGGGCGCCGGGAATTCGTCGACTGGATCCGGTACCGAGGAGATCTGCC
GCC**CGATCGCC**

ATGAAGGGCGCTCTGGGGAGTCCCGTGGCTGCCGTGGCGCCGCGATGCAGGAGAGTTTCGGCTGCGTGG
TGGCCAACCGCTCCATCAGCTGCTGGACGACGAGTCCGACCCGTTTCGACATCCTGCGGAGGCCGAGCG
CCGGCGCCAGCAGCAGCTGCAGCGCAAGAGGCGGACGAGGCGGGCGGGCGGGCCGGGGCCCGTCCCGC
GGCGGCAGGAGCCAGCCGGGGCTCGGGCCACAGAGCCGGCGGGCGGGCGGGAGGAGTGCAGAAGG
AGCGCAAGAGCCTCCCGCGCCCGTCTCAGCGCCCGATAGCCCCGGGGCGGCTGCAGGCGCCGGG
CCAGAAGCGGACTCCTAGAAGAGGGGAGCAGCAAGGATGGAATGACAGCCGTGGCCGGAGGGGATGCTC
GAAAGAGCTGAGCGGAGATCCTACAGGGAATACCGACCCTATGAGACAGAGAGGCAGGCAGACTTCACAG
CTGAGAAGTTTCCAGATGAAAAACAGGTGATAGGTTTGTATCGAGACAGACCGTTGAGAGGACGTGGAGG
CCCAGAGGGGGTATGCGCGGCAGAGGCAGAGGTGGCCCTGGGAACAGAGTTTTTGACGCTTTTGACCAG
AGAGGAAAGCGAGAATTTGAAAGATATGGTGGGAATGACAAAATAGCAGTCAGAAGTGAAGACAACATGG
GTGGATGTGGAGTTCGAACCTGGGGATCGGGTAAAGATACCAGTGTGTGGAGCCAACTGCACCGATGGA
GGAACCCACAGTGGTGGAGGAGTCCCAGGGCACCCGGAAGAGGAGTCTCCAGCCAAAGTTTCTGAGTTG
GAGGTAGAAGAAGAAACCAAGTTCAAGAGATGACTTTAGATGAGTGGAAAAATCTTCAAGAACAGACCA
GACCAAAGCCTGAGTTTAAACATCCGAAACAGAAATCCACTGTTCTTCAAAGCCGTGGTGATTACAA
GTCAAAATACAGAGATGATATGGTAAAAGATGACTATGAGGACGATTCCCATGTTTTCCGGAAACCCGCC
AATGACATCACATCCCAGCTGGAGATTAATTTGGTAACCTCCCTCGTCTGGGCGTGGAGCCAGAGGAG
GCACCCGGGGAGGCCGGGAAGGATCAGGAGGGCAGAGAATAAGACCCAGAGCAGAAGTGGTGTGCA
AGATGTTGCCCAACCCAGATGACCCGGAAGATTTCCCTGCGCTGTCT

ACGCGTACGCGGCCGCTCGAGCAGAAACTCATCTCAGAAGAGGATCTGGCAGCAAATGATATCCTGGATT
ACAAGGATGACGACGATAAGGTTTAA



[View online »](#)

Protein Sequence: >RC211972 representing NM_014282
Red=Cloning site Green=Tags(s)

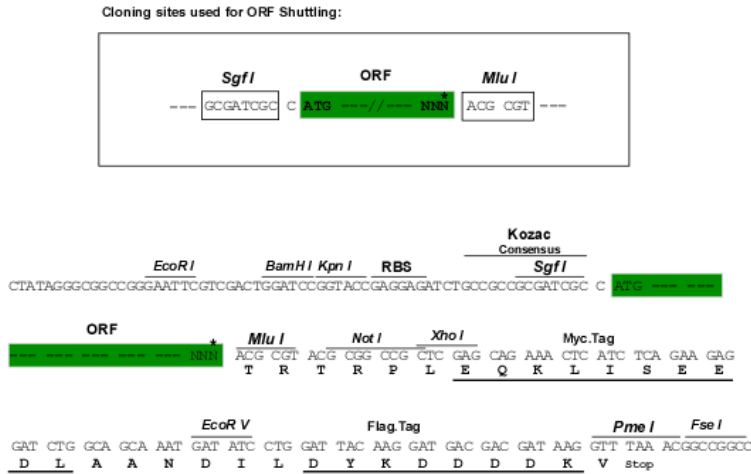
```
MKGALGSPVAAAGAAMQESFGCVVANRFHQLLDDESDPFDILREAERRRQQQLQRKRRDEAAAAAGAGPR
GGRSPAGASGHRAGAGRRRESQKERKSLPAPVAQRPDSPGGGLQAPGQKRTPRRGEQQGWNDSRGPEGML
ERAERRSYREYRPYETERQADFTA EKFPDEKPGDRFDRDRPLRGRGGPRGMRGRGGPGNRVFDADFQ
RGKREFERYGGNDKIAVRTEDNMGGCGVRTWGSKGDTS DVEPTAPMEEPTVVEESQGTPEEESPAKVPEL
EVEEETQVQEMTLDEWKNLQEQTRPKPEFNIRKPESTVPSKAVVIHKSRYRDDMVKDDYEDDSHVFRKPA
NDITSQLEINFGNLRPRGRGARGGTRGGRGIRRAENYGPRAEVMQDVAPNPDDPEDFPALS
```

TRTRPLEQKLISEEDLAANDILDYKDDDDKV

Chromatograms: https://cdn.origene.com/chromatograms/mk6824_c11.zip

Restriction Sites: SgfI-MluI

Cloning Scheme:



* The last codon before the Stop codon of the ORF

ACCN: NM_014282

ORF Size: 1239 bp

OTI Disclaimer: The molecular sequence of this clone aligns with the gene accession number as a point of reference only. However, individual transcript sequences of the same gene can differ through naturally occurring variations (e.g. polymorphisms), each with its own valid existence. This clone is substantially in agreement with the reference, but a complete review of all prevailing variants is recommended prior to use. [More info](#)

OTI Annotation: This clone was engineered to express the complete ORF with an expression tag. Expression varies depending on the nature of the gene.

Components: The ORF clone is ion-exchange column purified and shipped in a 2D barcoded Matrix tube containing 10ug of transfection-ready, dried plasmid DNA (reconstitute with 100 ul of water).

Reconstitution Method:

1. Centrifuge at 5,000xg for 5min.
2. Carefully open the tube and add 100ul of sterile water to dissolve the DNA.
3. Close the tube and incubate for 10 minutes at room temperature.
4. Briefly vortex the tube and then do a quick spin (less than 5000xg) to concentrate the liquid at the bottom.
5. Store the suspended plasmid at -20°C. The DNA is stable for at least one year from date of shipping when stored at -20°C.

RefSeq: [NM_014282.4](#)

RefSeq Size: 1799 bp

RefSeq ORF: 1242 bp

Locus ID: 22927

UniProt ID: [Q5JVS0](#)

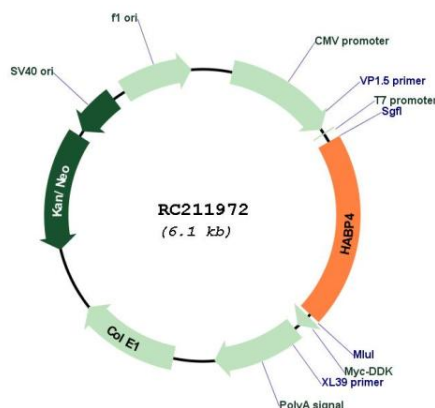
Cytogenetics: 9q22.32

Domains: HABP4_PAI-RBP1

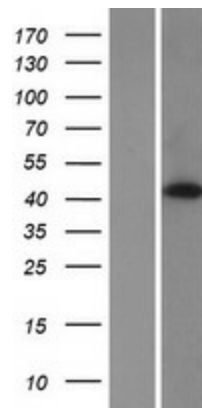
MW: 45.6 kDa

Gene Summary: RNA-binding protein that plays a role in the regulation of transcription, pre-mRNA splicing and mRNA translation (PubMed:14699138, PubMed:16455055, PubMed:19523114, PubMed:21771594). Negatively regulates DNA-binding activity of the transcription factor MEF2C in myocardial cells in response to mechanical stress (By similarity). Plays a role in pre-mRNA splicing regulation (PubMed:19523114). Binds (via C-terminus) to poly(U) RNA (PubMed:19523114). Involved in mRNA translation regulation, probably at the initiation step (PubMed:21771594). Seems to play a role in PML-nuclear bodies formation (PubMed:28695742).[UniProtKB/Swiss-Prot Function]

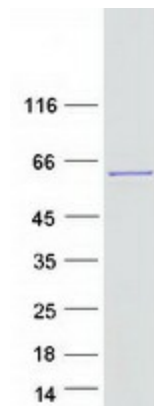
Product images:



Circular map for RC211972



Western blot validation of overexpression lysate (Cat# [LY415386]) using anti-DDK antibody (Cat# [TA50011-100]). Left: Cell lysates from untransfected HEK293T cells; Right: Cell lysates from HEK293T cells transfected with RC211972 using transfection reagent MegaTran 2.0 (Cat# [TT210002]).



Coomassie blue staining of purified HABP4 protein (Cat# [TP311972]). The protein was produced from HEK293T cells transfected with HABP4 cDNA clone (Cat# RC211972) using MegaTran 2.0 (Cat# [TT210002]).