

## Product datasheet for **RC211970**

### **IL1RAP (NM\_002182) Human Tagged ORF Clone**

#### **Product data:**

<b>Product Type:</b>	Expression Plasmids
<b>Product Name:</b>	IL1RAP (NM_002182) Human Tagged ORF Clone
<b>Tag:</b>	Myc-DDK
<b>Symbol:</b>	IL1RAP
<b>Synonyms:</b>	C3orf13; IL-1RAcP; IL1R3
<b>Mammalian Cell Selection:</b>	Neomycin
<b>Vector:</b>	pCMV6-Entry (PS100001)
<b>E. coli Selection:</b>	Kanamycin (25 ug/mL)



[View online »](#)

**ORF Nucleotide Sequence:**

>RC211970 representing NM\_002182  
 Red=Cloning site Blue=ORF Green=Tags(s)

TTTTGTAATACGACTCACTATAGGGCGGCCGGGAATTCGTCGACTGGATCCGGTACCGAGGAGATCTGCC  
 GCC**CGGATCGCC**

ATGACACTTCTGTGGTGTAGTGTAGTCTCTACTTTTATGGAATCCTGCAAAGTGATGCCTCAGAACGCT  
 GCGATGACTGGGACTAGACACCATGAGGCAAATCCAAGTGTGGAAGATGAGCCAGCTCGCATCAAGTG  
 CCCACTCTTTGAACACTTCTTGAATTCAACTACAGCACAGCCATTCAGCTGGCCTTACTCTGATCTGG  
 TATTGGACTAGGCAGGACCGGGACCTTGAGGAGCCAATTAACCTCCGCCTCCCGAGAACCGCATTAGTA  
 AGGAGAAAAGATGTGCTGTGGTCCGGCCACTCTCCTCAATGACACTGGCAACTATACCTGCATGTTAAG  
 GAACACTACATATTGCAGCAAAGTTCATTTCCCTTGGAAAGTGTTCAAAAGACAGCTGTTTCAATTCC  
 CCCATGAAACTCCAGTGCATAAAGTGTATAGAAATGGCATTAGAGGATCACTTGTCCAAATGTAG  
 ATGGATATTTCCCTTCCAGTGTCAAACCGACTCACTTGGTATATGGGCTGTTATAAAATACAGAATTT  
 TAATAATGTAATACCCGAAGGTATGAACCTTGAGTTTCTCATTGCCTTAATTTCAAATAATGAAATTTAC  
 ACATGTGTTGTTACATATCCAGAAAATGGAGCTACGTTTCATCTACCAGGACTCTGACTGTAAAGGTAG  
 TAGGCTCTCCAAAAATGCAGTGCCCCCTGTGATCCATTCACCTAATGATCATGTGGTCTATGAGAAAGA  
 ACCAGGAGAGGAGCTACTCATTCCCTGTACGGTCTATTTTAGTTTTCTGATGGATTCTCGCAATGAGGTT  
 TGGTGGACCATTGATGAAAAAACCTGATGACATCACTATTGATGTCACCATTAAACGAAAGTATAAGTC  
 ATAGTAGAACAGAAGTGAACAAGAAGTCAAGATTTTGGAGTCAAGAAAGTTACCTCTGAGGATCTCAA  
 GCGCAGCTATGTCTGTCTAGAAAGTCCAAAGGCGAAGTTGCCAAAGCAGCAAGGTGAAGCAGAAA  
 GTGCCAGCTCCAAGATACACAGTGAAGTGGCTTGTGGTTTTGGAGCCACAGTCTGCTAGTGGTGATTC  
 TCATTTGTTGTTTACCATGTTTACTGGCTAGAGATGGTCTATTTTACCGGGCTCATTTTGGAACAGATGA  
 AACATTTTAGATGGAAGAGATGATGATTTATGTATCCTATGCAAGGAATGCGGAAGAAGAAGATTT  
 GTATTACTGACCTCCGTGGAGTTTTGGAGAATGAATTTGGATACAAGCTGTGCATCTTTGACCGAGACA  
 GTCTGCCTGGGGAAATTGTCACAGATGAGACTTTGAGCTTCATTAGAAAAGCAGACGCCTCCTGTTGT  
 TCTAAGCCCAACTACGTGCTCCAGGAAACCAAGCCCTCCTGGAGCTCAAGGCTGGCCTAGAAAATATG  
 GCCTCTCGGGCAACATCAACGTCATTTTAGTACAGTACAAGCTGTGAAGGAAACGAAGGTGAAAGAGC  
 TGAAGAGGGCTAAGACGGTGTCTACGGTCATTAATGAAAGGGGAAAAATCCAAGTATCCACAGGGCAG  
 GTTCTGGAAGCAGCTGCAGGTGGCCATGCCAGTGAAGAAAAGTCCAGGGGCTAGCAGTGATGAGCAG  
 GGCTCTCGTATTCATCTTTGAAAAATGTA

**ACGCGT**ACGCGGGCCGCTCGAGCAGAAACTCATCTCAGAAGAGGATCTGGCAGCAAATGATATCCTGGATT  
 ACAAGGATGACGACGATAAGGTTTAA

**Protein Sequence:**

>RC211970 representing NM\_002182  
 Red=Cloning site Green=Tags(s)

MTLLWCVVSIFYGILQSDASERCDDWGLDTRMQIQVFEDEPARIKCPLFEHFLKFNYSHTASAGLTLIW  
 YWTRQDRDLEEPINFRLPENRISKEKDVLFWRPTLLNDTGNYTCLMRNTTYCSKVAFPLEVVQKDFNS  
 PMKLPVHKLYIEYGIQRITCPNVDGYFPSSVKPTITWYMGCKIQNFNNVIPEGMNL SFLIALISNNGNY  
 TCVVYTPENGRFHLTRTLTKVVGSPKNAVPPVIHSPNDHVVYEKEPGEELLIPCTVYFSLMDSRNEV  
 WWTIDGKPPDDITIDVTINESISHSRTEDETRTQILSIKKVTSIDLKRSYVCHARSAKGEVAKAAKVKQK  
 VPAPRYTVELACFGATVLLVILIVVYHVVWLEMLVFYRAHFGTDETILDGKEYDIYVSYARNAEEEEF  
 VLLTLRGVLENEFGYKLCIFDRDSLPGGI VTD ETL SFIQKSRRLLVVLSPNYVLQGTQALLELKAGLENM  
 ASRGNINVILVQYKAVKETKVKELKRAKTVLTVIKWKGEKSKYPQGRFWKQLQVAMPVKKSPRRSSSDEQ  
 GLSYSSLKNV

**TR**TRPLEQKLISEEDLAANDILDYKDDDDKV

**Chromatograms:**

[https://cdn.origene.com/chromatograms/mk6112\\_g01.zip](https://cdn.origene.com/chromatograms/mk6112_g01.zip)

**Restriction Sites:**

Sgfl-Mlul

**Cloning Scheme:**


**ACCN:** NM\_002182

**ORF Size:** 1710 bp

**OTI Disclaimer:** The molecular sequence of this clone aligns with the gene accession number as a point of reference only. However, individual transcript sequences of the same gene can differ through naturally occurring variations (e.g. polymorphisms), each with its own valid existence. This clone is substantially in agreement with the reference, but a complete review of all prevailing variants is recommended prior to use. [More info](#)

**OTI Annotation:** This clone was engineered to express the complete ORF with an expression tag. Expression varies depending on the nature of the gene.

**Components:** The ORF clone is ion-exchange column purified and shipped in a 2D barcoded Matrix tube containing 10ug of transfection-ready, dried plasmid DNA (reconstitute with 100 ul of water).

**Reconstitution Method:**

1. Centrifuge at 5,000xg for 5min.
2. Carefully open the tube and add 100ul of sterile water to dissolve the DNA.
3. Close the tube and incubate for 10 minutes at room temperature.
4. Briefly vortex the tube and then do a quick spin (less than 5000xg) to concentrate the liquid at the bottom.
5. Store the suspended plasmid at -20°C. The DNA is stable for at least one year from date of shipping when stored at -20°C.

**RefSeq:** [NM\\_002182.4](#)

**RefSeq Size:** 4726 bp

**RefSeq ORF:** 1713 bp

**Locus ID:** 3556

**UniProt ID:** [Q9NPH3](#)

**Cytogenetics:** 3q28

**Domains:** TIR, ig, IG

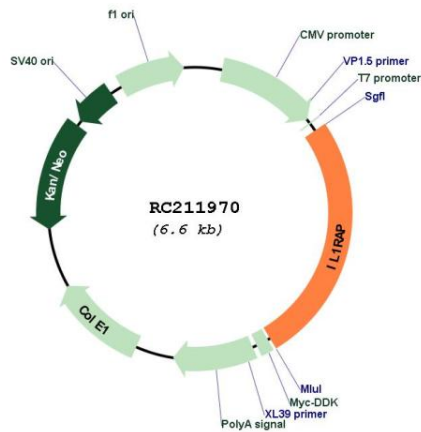
**Protein Families:** Druggable Genome, Secreted Protein, Transmembrane

**Protein Pathways:** Apoptosis, Cytokine-cytokine receptor interaction

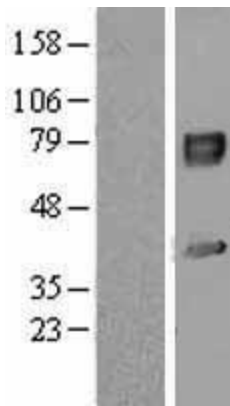
**MW:** 65.2 kDa

**Gene Summary:** This gene encodes a component of the interleukin 1 receptor complex, which initiates signalling events that result in the activation of interleukin 1-responsive genes. Alternative splicing of this gene results in membrane-bound and soluble isoforms differing in their C-terminus. The ratio of soluble to membrane-bound forms increases during acute-phase induction or stress. [provided by RefSeq, Jul 2018]

**Product images:**



Circular map for RC211970



Western blot validation of overexpression lysate (Cat# [LY400791]) using anti-DDK antibody (Cat# [TA50011-100]). Left: Cell lysates from untransfected HEK293T cells; Right: Cell lysates from HEK293T cells transfected with RC211970 using transfection reagent MegaTran 2.0 (Cat# [TT210002]).