

Product datasheet for RC211968

SIT (SIT1) (NM_014450) Human Tagged ORF Clone

Product data:

Product Type: Expression Plasmids
Product Name: SIT (SIT1) (NM_014450) Human Tagged ORF Clone
Tag: Myc-DDK
Symbol: SIT
Synonyms: SIT; SIT-R
Mammalian Cell Selection: Neomycin
Vector: pCMV6-Entry (PS100001)
E. coli Selection: Kanamycin (25 ug/mL)
ORF Nucleotide Sequence: >RC211968 ORF sequence
 Red=Cloning site Blue=ORF Green=Tags(s)

TTTTGTAATACGACTCACTATAGGGCGCCGGGAATTCGTCGACTGGATCCGGTACCGAGGAGATCTGCC
 GCC**CGATCGCC**

ATGAACCAAGGCTGACCCTCGGCTCAGAGCAGTGTGCTTGTGGACTCTCACATCTGCAGCCATGAGCAGAG
 GCGACAACGCACGGATCTACTCGCACTGGGAATCCCCTCCATAACCCAGGCCTGGGGACTGTGGGTCTC
 CTTAGGGCTGTGACGCTGCTATTTCTCATCTCGCTGGCTGCACACTTGTCCCAGTGGACCAGGGCCGG
 AGCAGGAGCCATCCGGGGCAGGGACGCTCTGGAGAGTCTGTGGAAGAGGTCCCGCTGTATGGAACTGC
 ATTATCTACAGACAGGACGGCTGTCTCAAGACCCAGAGCCAGACCAGCAGGATCCAACCTCTGGAGGCC
 TGCCAGGGCTGCAGAGGAGGTGATGTGCTATACCAAGCCTGCAGCTGCGGCCTCCTCAGGGTCGGATCCCC
 GGTCTTGGAAACCCCGTCAAGTACTCGGAGGTGGTGTGGACTCTGAGCCAAAGTCCCAGGCCTCGGGCC
 CCGAGCCGGAGCTCTATGCCTCAGTATGTGCCAGACCCGAGGGCCCGGGCCTCCTTCCCGGATCAGGC
 CTATGCCAACAGCCAGCCTGCAGCCAGC

ACGCGTACGCGGGCCGCTCGAGCAGAACTCATCTCAGAAGAGGATCTGGCAGCAAATGATATCCTGGATT
 ACAAGGATGACGACGATAAGGTTTAA

Protein Sequence: >RC211968 protein sequence
 Red=Cloning site Green=Tags(s)

MNQADPRLRAVCLWLTSAAMSRGDNCTDLLALGIPSITQAWLWVLLGAVTLLFLISLAAHLQWTRGR
 SRSHPGQGRSGESVVEVPLYGNLHYLQTGRLSQDPEPDQDPTLGGPARAAEEVMCYTSLQLRPPQGRIP
 GPGTPVKYSEVLDSEPKSQASGPEPELYASVCAQTRRARASFPDQAYANSQPAAS

TRTRPLEQKLISEEDLAANDILDYKDDDDKV



[View online »](#)

Chromatograms: https://cdn.origene.com/chromatograms/mk6447_e06.zip

Restriction Sites: Sgfl-MluI

Cloning Scheme:



ACCN: NM_014450

ORF Size: 588 bp

OTI Disclaimer: The molecular sequence of this clone aligns with the gene accession number as a point of reference only. However, individual transcript sequences of the same gene can differ through naturally occurring variations (e.g. polymorphisms), each with its own valid existence. This clone is substantially in agreement with the reference, but a complete review of all prevailing variants is recommended prior to use. [More info](#)

OTI Annotation: This clone was engineered to express the complete ORF with an expression tag. Expression varies depending on the nature of the gene.

Components: The ORF clone is ion-exchange column purified and shipped in a 2D barcoded Matrix tube containing 10ug of transfection-ready, dried plasmid DNA (reconstitute with 100 ul of water).

Reconstitution Method:

1. Centrifuge at 5,000xg for 5min.
2. Carefully open the tube and add 100ul of sterile water to dissolve the DNA.
3. Close the tube and incubate for 10 minutes at room temperature.
4. Briefly vortex the tube and then do a quick spin (less than 5000xg) to concentrate the liquid at the bottom.
5. Store the suspended plasmid at -20°C. The DNA is stable for at least one year from date of shipping when stored at -20°C.

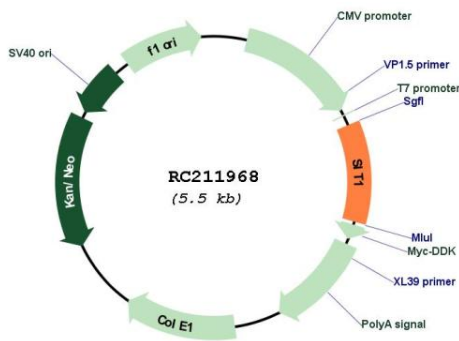
Note: Plasmids are not sterile. For experiments where strict sterility is required, filtration with 0.22um filter is required.

RefSeq: [NM_014450.3](#)

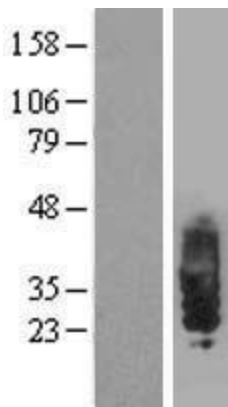
RefSeq Size: 1238 bp

RefSeq ORF:	591 bp
Locus ID:	27240
UniProt ID:	Q9Y3P8
Cytogenetics:	9p13.3
Protein Families:	Transmembrane
MW:	21.1 kDa
Gene Summary:	Negatively regulates TCR (T-cell antigen receptor)-mediated signaling in T-cells. Involved in positive selection of T-cells.[UniProtKB/Swiss-Prot Function]

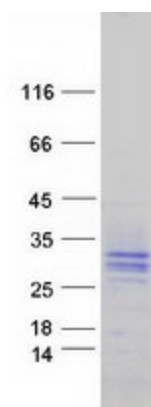
Product images:



Circular map for RC211968



Western blot validation of overexpression lysate (Cat# [LY415274]) using anti-DDK antibody (Cat# [TA50011-100]). Left: Cell lysates from untransfected HEK293T cells; Right: Cell lysates from HEK293T cells transfected with RC211968 using transfection reagent MegaTran 2.0 (Cat# [TT210002]).



Coomassie blue staining of purified SIT1 protein (Cat# [TP311968]). The protein was produced from HEK293T cells transfected with SIT1 cDNA clone (Cat# RC211968) using MegaTran 2.0 (Cat# [TT210002]).