

## Product datasheet for **RC211951**

### ONECUT2 (NM\_004852) Human Tagged ORF Clone

#### Product data:

|                           |  |
|---------------------------|--|
| Product Type:             | Expression Plasmids                        |
| Product Name:             | ONECUT2 (NM_004852) Human Tagged ORF Clone |
| Tag:                      | Myc-DDK                                    |
| Symbol:                   | ONECUT2                                    |
| Synonyms:                 | OC-2; OC2                                  |
| Mammalian Cell Selection: | Neomycin                                   |
| Vector:                   | pCMV6-Entry (PS100001)                     |
| E. coli Selection:        | Kanamycin (25 ug/mL)                       |



[View online »](#)

**ORF Nucleotide Sequence:**

>RC211951 representing NM\_004852  
 Red=Cloning site Blue=ORF Green=Tags(s)

TTTTGTAATACGACTCACTATAGGGCGGCCGGGAATTCGTCGACTGGATCCGGTACCGAGGAGATCTGCC  
 GCC**CGCATCGCC**

ATGAAGGCTGCCTACACCGCCTATCGATGCCTACCAAAGACCTAGAAGGCTGCGCCATGAACCCGGAGC  
 TGACAATGGAAAGTCTGGGCACTTTGCACGGGCGCGCCGGCGGCGCAGTGGCGGGGCGCGCGGGGG  
 CGGCGGGGGCGCGCGGGGGCCCGGGCCATGAGCAGGAGCTGCTGGCCAGCCCCAGCCCCACCACGCG  
 GGCCGCGGCGCCGCTGGCTCGCTGCGGGGCCCTCCGCCGCTCCAACCGCGCACCAGGAGCTGGGACGG  
 CGGCAGCGGGCAGCGGCGGCTCGCGCTCGGCCATGGTACCAGCATGGCCTCGATCTGGACGGCGG  
 CGACTACCGCCCCGAGCTCTCCATCCCCTGCACCAGCCATGAGCATGTCTGCGACTCGTCTCCGCT  
 GGCATGGGCATGAGCAACACCTACACCACGCTGACACCGCTCCAGCCGCTGCCACCCATCTCCACCGTGT  
 CTGACAAGTTCACCACCCTACCCGCACCACCATCCGCACCACCACCACCACCACCACCAGCGCT  
 GTCGGCAACGTACGCGCAGCTTACCCTCATGCGCGACGAGCGGGCTCCCGCCATGAACAACCTC  
 TACAGTCCCTACAAGGAGATGCCCGGCATGAGCCAGAGCCTGTCCCGCTGGCCGCCACGCGCTGGGCA  
 ACGGGCTAGGCGGCTCCACAACGCGCAGCAGAGTCTGCCCAACTACGGTCCGCCGGGCCACGACAAAAT  
 GCTCAGCCCCAATTGACGCGCACCACACTGCCATGCTGACCCGCGGTGAGCAACACCTGTCCCGCGGC  
 CTGGGCACCCACCTGCGGCCATGATGTGCGACCTGAACGGCCTGCACCACCCGGGCCACACTCAGTCTC  
 ACGGGCCGGTGTGGCACCCAGTCGCGAGCGGCCACCCTCGTCTCATCGGGCTCGCAGGTGGCCACGTC  
 GGGCCAGCTGGAAGAAATCAACACCAAAGAGGTGGCCAGCGCATCACAGCGGAGCTGAAGCGCTACAGT  
 ATCCCCAGGCGATCTTGGCGAGAGGTGTGTGCCGGTCTCAGGGGACTCTCTCCGACTGCTCCGGA  
 ATCCAAACCGTGGAGTAAACTCAAATCTGGCAGGGAGACCTCCGCAGGATGTGGAAGTGGCTTCAGGA  
 GCCCGAGTTCAGCGCATGTCCGCCTTACGCCTGGCAGCGTCAAACGCAAAGAGCAAGAACCAACAAA  
 GACAGGAACAATCCAGAAGAAGTCCCGCTGGTGTCTACTGACCTCCAACGCCGAACACTCTTCGCCA  
 TCTTCAAGGAGAACAAACGCCCGTCAAAGGAGATGCAGATCACCATTTCCAGCAGCTGGGCTGGAGCT  
 CACAACCGTCAGCAACTTCTTATGAACGCCCGCGCGCAGCCTGGAGAAGTGGCAAGACGATCTGAGC  
 ACAGGGGGCTCCTCGTCCACCTCCAGCACGTGTACCAAAGCA

**ACGCGT**ACGCGGCCGCTCGAGCAGAAACTCATCTCAGAAGAGGATCTGGCAGCAAATGATATCCTGGATT  
 ACAAGGATGACGACGATAAGGTTTAA

**Protein Sequence:**

>RC211951 representing NM\_004852  
 Red=Cloning site Green=Tags(s)

MKAAYTAYRCLTKDLEGCAMNPELTMESLGLTHGPAGGSGGGGGGGGGGGGGPGHEQELLASPSPHHA  
 GRGAAGSLRGPPTTAHQELGTAASAAAAASRSAMVTSMASILDGGDYRPELSIPLHAMSMSCDSSPP  
 GMGMSNTYTTLTPLQPLPPISTVSDKFHHPHHPHHHHHHHHQRLSGNVSGSFTLMRDERGLPAMNNL  
 YSPYKEMPGMSQSLSPLAATPLGNLGLHNAQQSLPNYGPFGDKMLSPNFDAHHTAMLTRGEQHLSRG  
 LGTPPAAMMSHLNGLHHPGHTQSHGPVLAPSRERPPSSSSGSQVATSGQLEEINTKEVAQRITAELKRY  
 IPQAIFAQRVLCRSQGLSDLLRNPKPWSKLSGRETFRRMWWLQEPEFQRMSALRLAACKRKEQEPNK  
 DRNNSQKKSRLVFTDLQRRTLFAIFKENKRPSKEMQITISQQLGLELTTVSNFFMNARRRSLEKWQDLS  
 TGGSSSTSTCTKA

**TR**TRPLEQKLISEEDLAANDILDYKDDDDKV

**Restriction Sites:**

Sgfl-Mlul

**Cloning Scheme:**

**ACCN:** NM\_004852

**ORF Size:** 1512 bp

**OTI Disclaimer:** Due to the inherent nature of this plasmid, standard methods to replicate additional amounts of DNA in E. coli are highly likely to result in mutations and/or rearrangements. Therefore, OriGene does not guarantee the capability to replicate this plasmid DNA. Additional amounts of DNA can be purchased from OriGene with batch-specific, full-sequence verification at a reduced cost. Please contact our customer care team at [custsupport@origene.com](mailto:custsupport@origene.com) or by calling 301.340.3188 option 3 for pricing and delivery.

The molecular sequence of this clone aligns with the gene accession number as a point of reference only. However, individual transcript sequences of the same gene can differ through naturally occurring variations (e.g. polymorphisms), each with its own valid existence. This clone is substantially in agreement with the reference, but a complete review of all prevailing variants is recommended prior to use. [More info](#)

**OTI Annotation:** This clone was engineered to express the complete ORF with an expression tag. Expression varies depending on the nature of the gene.

**Components:** The ORF clone is ion-exchange column purified and shipped in a 2D barcoded Matrix tube containing 10ug of transfection-ready, dried plasmid DNA (reconstitute with 100 ul of water).

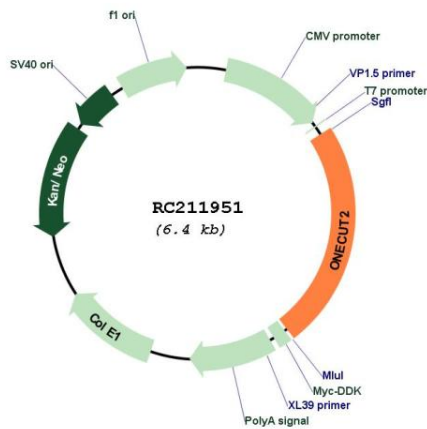
- Reconstitution Method:**
1. Centrifuge at 5,000xg for 5min.
  2. Carefully open the tube and add 100ul of sterile water to dissolve the DNA.
  3. Close the tube and incubate for 10 minutes at room temperature.
  4. Briefly vortex the tube and then do a quick spin (less than 5000xg) to concentrate the liquid at the bottom.
  5. Store the suspended plasmid at -20°C. The DNA is stable for at least one year from date of shipping when stored at -20°C.

**RefSeq:** [NM\\_004852.3](#)

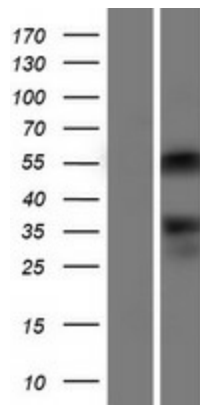
RefSeq Size: 16142 bp  
 RefSeq ORF: 1515 bp  
 Locus ID: 9480  
 UniProt ID: [O95948](#)  
 Cytogenetics: 18q21.31  
 Protein Families: Transcription Factors  
 MW: 54.1 kDa

**Gene Summary:** This gene encodes a member of the onecut family of transcription factors, which are characterized by a cut domain and an atypical homeodomain. The protein binds to specific DNA sequences and stimulates expression of target genes, including genes involved in melanocyte and hepatocyte differentiation. [provided by RefSeq, Jul 2008]

### Product images:



Circular map for RC211951



Western blot validation of overexpression lysate (Cat# [LY417699]) using anti-DDK antibody (Cat# [TA50011-100]). Left: Cell lysates from untransfected HEK293T cells; Right: Cell lysates from HEK293T cells transfected with RC211951 using transfection reagent MegaTran 2.0 (Cat# [TT210002]).