

## Product datasheet for RC211947

### C1orf69 (IBA57) (NM\_001010867) Human Tagged ORF Clone

#### Product data:

Product Type:	Expression Plasmids
Product Name:	C1orf69 (IBA57) (NM_001010867) Human Tagged ORF Clone
Tag:	Myc-DDK
Symbol:	C1orf69
Synonyms:	C1orf69; MMDS3; SPG74
Mammalian Cell Selection:	Neomycin
Vector:	pCMV6-Entry (PS100001)
E. coli Selection:	Kanamycin (25 ug/mL)
ORF Nucleotide Sequence:	>RC211947 representing NM_001010867 Red=Cloning site Blue=ORF Green=Tags(s)

TTTTGTAATACGACTCACTATAGGGCGGCCGGGAATTCGTCGACTGGATCCGGTACCGAGGAGATCTGCC  
GCC**CGATCGCC**

ATGGCGACCGGGCGCTGCTTCGAGGGCCACTCCGGGGCGGGCGGCCCGGTCTGGCGCTGGCGGCTGC  
GCGCGGCCCAAGGTGCCGCTGGCCACAGCTCCTGCAGTCTGGTGGCGACCAACGGCCGGAGCGGC  
CTGGGCTGCTCCGGCTGGACGGGCGCACCTGCTGCGCGTGGTGGCCCGACGCGGCCCTTCTGT  
CTAGGGTGTGACCAATGAAGTCCGCTTCCGAGTCTGCGGCCGGGGGGCCCGCTGCTGCGCGCG  
CGGGCTACGCCACTTCTGAACGTGCAGGGCCGACGCTCTATGACGTCATCTTGTACGGGCTCCAGGA  
ACACTCGGAGGTGTCTGGCTTCTTCTGGAGTGTGACAGCTCGGTGCAGGGCGCGCTGCAGAAGCACCTC  
GCGCTATACAGGATCCGGCGGAAGGTACAGGTGGAGCCGACCCGGAGCTGCGAGTGTGGCGGTGTTGC  
CCAGTTCCTGAGGCTGCGGGGCTGCATCGCTGCAGGAGAGGGCAGGGGCTGCCGCCATCCTCATCCG  
CGACCCGCGAACAGCACGCATGGGGTGGCGGCTCCTCACCCAGGATGAAGGCCAGCCCTGGTGCCCGGG  
GGCCGGCTCGGGGACTTGTGGGATTATCACCAGCACCGATACCTGCAAGGCGTTCCTGAGGGGTCCGAG  
ACTTGCCTCCTGGGGTGGCCCTGCCCTGGAGTCCAACCTGGCCTTCATGAACGGCGTGAGCTTCACCAA  
AGGCTGTACATTGGCCAGGAGCTGACGGCCCGCACCCACCACATGGGCGTCATCCGCAAGCGCCTTTC  
CCTGTCGGTTCCTGGACCCCTTCCACCAGTGGCATACCCCTGGTGGCACGGTGTGACTGCCTCAG  
GACAGACTGTGGCAAGTTCAGGGCTGGCCAGGGCAACGTGGGGCTGGCCCTGCTGTGGTGCAGAGAAGAT  
CAAGGGTCTCTGCACATCAGAGCTCTGAGGGTGGCCAGGTGGCCTTAGCCGCATCTGTGCCAGACTGG  
TGGCTACAGTCTCAAG

**ACGCGT**ACGCGGCCGCTCGAGCAGAAACTCATCTCAGAAGAGGATCTGGCAGCAAATGATATCCTGGATT  
ACAAGGATGACGACGATAAGGTTAA



[View online »](#)

**Protein Sequence:** >RC211947 representing NM\_001010867  
Red=Cloning site Green=Tags(s)

MATAALLRGATPGRGGPVWRWRLRAAPRCRLAHSSCSPGGDPTAGAAWACFRLDGRTLRLVRGPDAAPFL  
 LGLLTNELPLPSPAAGAPPAARAGYAHFLNVQGRTRYDYLVLGLQEHSEVSGFLLCEDSSVQALQKHL  
 ALYRIRRKVTVPEHPPEL RVWAVLPSSPEACGAASLQERAGAAA ILIRDPRTARMGWRLLTQDEGPALVPG  
 GRLGDLWDYHQHRYLQGVPEGVRLDPPGVALPLESNLAFMNGVSFTKGCYIGQELTARTHHMGMVIRKRLF  
 PVRFLDPLPTSGITPGATVLTASGQTVGKFRAGQGNVGLALLWSEKIKGPLHIRASEGAQVALAASVPDW  
 WPTVSK

TRTRPLEQKLISEEDLAANDILDYKDDDDKV

**Chromatograms:** [https://cdn.origene.com/chromatograms/mk8026\\_e10.zip](https://cdn.origene.com/chromatograms/mk8026_e10.zip)

**Restriction Sites:** SgfI-MluI

**Cloning Scheme:**



**ACCN:** NM\_001010867

**ORF Size:** 1068 bp

**OTI Disclaimer:** The molecular sequence of this clone aligns with the gene accession number as a point of reference only. However, individual transcript sequences of the same gene can differ through naturally occurring variations (e.g. polymorphisms), each with its own valid existence. This clone is substantially in agreement with the reference, but a complete review of all prevailing variants is recommended prior to use. [More info](#)

**OTI Annotation:** This clone was engineered to express the complete ORF with an expression tag. Expression varies depending on the nature of the gene.

**Components:** The ORF clone is ion-exchange column purified and shipped in a 2D barcoded Matrix tube containing 10ug of transfection-ready, dried plasmid DNA (reconstitute with 100 ul of water).

- Reconstitution Method:**
1. Centrifuge at 5,000xg for 5min.
  2. Carefully open the tube and add 100ul of sterile water to dissolve the DNA.
  3. Close the tube and incubate for 10 minutes at room temperature.
  4. Briefly vortex the tube and then do a quick spin (less than 5000xg) to concentrate the liquid at the bottom.
  5. Store the suspended plasmid at -20°C. The DNA is stable for at least one year from date of shipping when stored at -20°C.

**RefSeq:** [NM\\_001010867.4](#)

**RefSeq Size:** 7817 bp

**RefSeq ORF:** 1071 bp

**Locus ID:** 200205

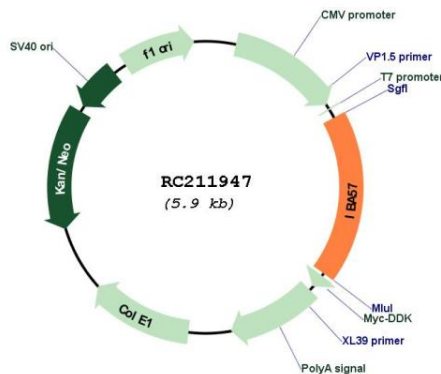
**UniProt ID:** [Q5T440](#)

**Cytogenetics:** 1q42.13

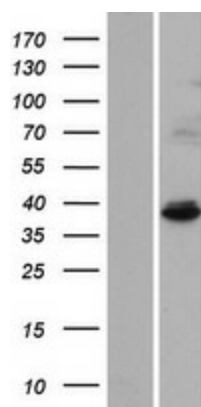
**MW:** 38 kDa

**Gene Summary:** The protein encoded by this gene localizes to the mitochondrion and is part of the iron-sulfur cluster assembly pathway. The encoded protein functions late in the biosynthesis of mitochondrial 4Fe-4S proteins. Defects in this gene have been associated with autosomal recessive spastic paraplegia-74 and with multiple mitochondrial dysfunctions syndrome-3. Two transcript variants encoding different isoforms have been found for this gene. The smaller isoform is not likely to be localized to the mitochondrion since it lacks the amino-terminal transit peptide. [provided by RefSeq, Jul 2015]

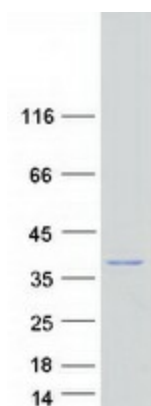
### Product images:



Circular map for RC211947



Western blot validation of overexpression lysate (Cat# [LY423195]) using anti-DDK antibody (Cat# [TA50011-100]). Left: Cell lysates from untransfected HEK293T cells; Right: Cell lysates from HEK293T cells transfected with RC211947 using transfection reagent MegaTran 2.0 (Cat# [TT210002]).



Coomassie blue staining of purified IBA57 protein (Cat# [TP311947]). The protein was produced from HEK293T cells transfected with IBA57 cDNA clone (Cat# RC211947) using MegaTran 2.0 (Cat# [TT210002]).