

## Product datasheet for RC211945

### DUSP15 (NM\_080611) Human Tagged ORF Clone

#### Product data:

Product Type:	Expression Plasmids
Product Name:	DUSP15 (NM_080611) Human Tagged ORF Clone
Tag:	Myc-DDK
Symbol:	DUSP15
Synonyms:	C20orf57; VHY
Mammalian Cell Selection:	Neomycin
Vector:	pCMV6-Entry (PS100001)
E. coli Selection:	Kanamycin (25 ug/mL)
ORF Nucleotide Sequence:	>RC211945 representing NM_080611 Red=Cloning site Blue=ORF Green=Tags(s)

TTTTGTAATACGACTCACTATAGGGCGGCCGGAATTCGTCGACTGGATCCGGTACCGAGGAGATCTGCC  
GCC**CGATCGCC**

ATGGGCAATGGCATGACCAAGGTA<sup>CTTCTCTGGACTCTACCTCGGAACTTCATTGATGCCAAGACCTGG</sup>  
ATCAGCTGGGCCGAAATAAGATCACACACATCATCTCTATCCATGAGTCACCCAGCCTCTGCTGCAGGA  
TATCACCTACCTTCGCATCCCGGTCGCTGATACCCCTGAGGTACCCATCAAAAAGCACTTCAAAGAATGT  
ATCAACTTCATCCACTGCTGCCGCCTTAATGGGGGAAGTGCCTTGTGCACTGCTTGCAGGCATCTCTC  
GCAGCACCACGATTGTGACAGCGTATGTGATGACTGTGACGGGGCTAGGCTGGCGGGACGTCTTGAAGC  
CATCAAGGCCACCAAGGCCATCGCCAACCCCAACCCAGGCTTTAGGCAGCAGCTTGAAGAGTTTGGCTGG  
GCCAGTTCCCAGAAGCTTCGCCGCGAGCTGGAGGAGCGCTTCGGCGAGAGCCCTTCCGCGACGAGGAGG  
AGTTGCGCGCGCTGCTGCCGCTGTGCAAGCGCTGCCGGCAGGGCTCCGCGACCTCGGCCTCTCCGCCGG  
GCCGCACTCAGCAGCCTCCGAGGGAACCTGCAGCGCCTGGTCCGCGCACGCCCGGGAAGCCACCGG  
CCGCTGCCGCTGCTGGCGCGCTCAAGCAGACTTCTCTTGCTCCCGGTGTCTGTCCCGCAAGGGCG  
GCAAG

**ACGCGT**ACGCGGCCGCTCGAGCAGAACTCATCTCAGAAGAGGATCTGGCAGCAAATGATATCCTGGATT  
ACAAGGATGACGACGATAAGGTTTAA



[View online »](#)

**Protein Sequence:** >RC211945 representing NM\_080611  
Red=Cloning site Green=Tags(s)

MNGMGTKVL PGL YLGNFIDAKDL DQLGRNKITHIISIHESQP LLDITYLRIPVADTPEVPIKHKHFKEC  
INFIHCCRLN GGNCLVHCFAGISRSTTIVTAYVMTVTGLGWRD VLEAIKATRPIANPNPGFRQ LEEFGW  
ASSQKLRRQL EERFGESPFRDEEELRALLPLCKRCRQGSATSASSAGPHSAASEGTLQRLVPRTPREAHR  
PLPLLARVKQTF SCLPRCLSRKGGK

TRTRPLEQKLI SEEDLAANDILDYKDDDDKV

**Chromatograms:** [https://cdn.origene.com/chromatograms/mg4956\\_f09.zip](https://cdn.origene.com/chromatograms/mg4956_f09.zip)

**Restriction Sites:** SgfI-MluI

**Cloning Scheme:**

Cloning sites used for ORF Shuttling:



\* The last codon before the Stop codon of the ORF

**ACCN:** NM\_080611

**ORF Size:** 705 bp

**OTI Disclaimer:** The molecular sequence of this clone aligns with the gene accession number as a point of reference only. However, individual transcript sequences of the same gene can differ through naturally occurring variations (e.g. polymorphisms), each with its own valid existence. This clone is substantially in agreement with the reference, but a complete review of all prevailing variants is recommended prior to use. [More info](#)

**OTI Annotation:** This clone was engineered to express the complete ORF with an expression tag. Expression varies depending on the nature of the gene.

**Components:** The ORF clone is ion-exchange column purified and shipped in a 2D barcoded Matrix tube containing 10ug of transfection-ready, dried plasmid DNA (reconstitute with 100 ul of water).

**Reconstitution Method:**

1. Centrifuge at 5,000xg for 5min.
2. Carefully open the tube and add 100ul of sterile water to dissolve the DNA.
3. Close the tube and incubate for 10 minutes at room temperature.
4. Briefly vortex the tube and then do a quick spin (less than 5000xg) to concentrate the liquid at the bottom.
5. Store the suspended plasmid at -20°C. The DNA is stable for at least one year from date of shipping when stored at -20°C.

**RefSeq:** [NM\\_080611.4](#), [NP\\_542178.2](#)

**RefSeq Size:** 1383 bp

**RefSeq ORF:** 708 bp

**Locus ID:** 128853

**UniProt ID:** [Q9H1R2](#)

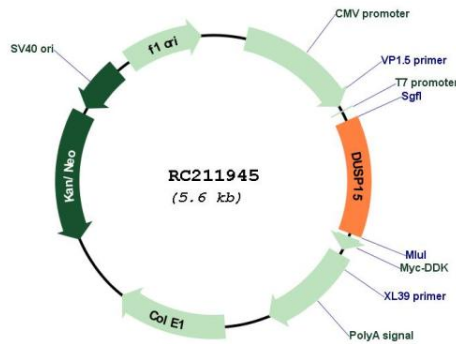
**Cytogenetics:** 20q11.21

**Protein Families:** Druggable Genome, Phosphatase

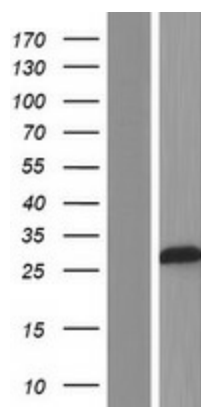
**MW:** 26 kDa

**Gene Summary:** The protein encoded by this gene has both protein-tyrosine phosphatase activity and serine/threonine-specific phosphatase activity, and therefore is known as a dual specificity phosphatase. This protein may function in the differentiation of oligodendrocytes. Alternative splicing results in multiple transcript variants. [provided by RefSeq, Feb 2016]

**Product images:**



Circular map for RC211945



Western blot validation of overexpression lysate (Cat# [LY409154]) using anti-DDK antibody (Cat# [TA50011-100]). Left: Cell lysates from untransfected HEK293T cells; Right: Cell lysates from HEK293T cells transfected with RC211945 using transfection reagent MegaTran 2.0 (Cat# [TT210002]).