

## Product datasheet for **RC211941**

### **IRF5 (NM\_001098629) Human Tagged ORF Clone**

#### **Product data:**

Product Type:	Expression Plasmids
Product Name:	IRF5 (NM_001098629) Human Tagged ORF Clone
Tag:	Myc-DDK
Symbol:	IRF5
Synonyms:	SLEB10
Mammalian Cell Selection:	Neomycin
Vector:	pCMV6-Entry (PS100001)
E. coli Selection:	Kanamycin (25 ug/mL)



[View online »](#)

**ORF Nucleotide Sequence:**

>RC211941 representing NM\_001098629  
 Red=Cloning site Blue=ORF Green=Tags(s)

TTTTGTAATACGACTCACTATAGGGCGGCCGGGAATTCGTCGACTGGATCCGGTACCGAGGAGATCTGCC  
 GCC**CGGATCGCC**

ATGAACCAGTCCATCCCAGTGGCTCCCACCCACCCCGCGCTGCGGCTGAAGCCCTGGCTGGTGCC  
 AGGTGAACAGCTGCCAGTACCCAGGCTTCAATGGGTCAACGGGAAAAGAAATTATTCTGCATCCCTG  
 GAGGCATGCCACAAGGCATGGTCCCAGCCAGGACGGAGATAACACCATCTTCAAGGCCTGGGCCAAGGAG  
 ACAGGGAAATACACCGAAGGCGTGGATGAAGCCGATCCGGCCAAGTGAAGGCCAACCTGCGCTGTGCC  
 TTAACAAGAGCCGGGACTTCCGCCTCATCTACGACGGGCCCGGACATGCCACCTCAGCCCTACAAGAT  
 CTACGAGGTCTGCTCCAATGGCCCTGCTCCACAGACTCCAGCCCTGAGGATTACTCTTTTGGTGCA  
 GGAGAGGAGGAGAAGAAGGAAGAGCTGCAGAGGATGTTGCCAAGCCTGAGCCTCACAGATGCAGTGC  
 AGTCTGGCCCCACATGACACCTATTCTTTACTCAAAGAGGATGTCAAGTGGCCGCCACTCTGCAGCC  
 GCCACTCTGCGCCGCCTACTCTGCAGCCGCCACTCTGCAGCCGCCGTGGTGTGGTCCCCCTGCT  
 CCAGACCCAGCCCTGGCTCCTCCCCCTGGCAACCCTGCTGGCTTCAAGGAGCTTCTCTGAGGTCC  
 TGGAGCCTGGGCCCTGCCTGCCAGCCTGCCCTGACAGGCAACAGCTCCTGCCAGACCTGCTGATCAG  
 CCCCCACATGCTGCCTCTGACCGACTGGAGATCAAGTTTCAGTACCGGGGGCGGCCACCCCGGGCCCTC  
 ACCATCAGCAACCCCATGGCTGCCGGCTTTCTACAGCCAGCTGGAGGCCACCCAGGAGCAGGTGGAAC  
 TCTTCGGCCCCATAAGCCTGGAGCAAGTGCCTTCCCCAGCCCTGAGGACATCCCCAGTGAACAGCAGCG  
 CTTCTACAGCAACAGCTGCTGGATGCTCTGGACCGGGCTCATCTCCAGCTACAGGGCCAGGACCTT  
 TATGCCATCCGCTGTGTCAGTGAAGGTGTTCTGGAGCGGCCCTGTGCCTCAGCCATGACTCATGCC  
 CCAACCCATCCAGCGGAGGTCAAGACCAAGCTTTTCAGCCTGGAGCATTTTCTCAATGACTCATCCT  
 GTTCCAAAAGGGCCAGACCAACACCCACCCCTTCGAGATCTTCTTCTGCTTTGGGGAAGAATGGCCT  
 GACCGCAAACCCGAGAGAAGAAGCTCATTACTGTACAGGTGGTGCCTGTAGCAGCTCGACTGCTGCTGG  
 AGATGTTCTCAGGGAGCTATCTTGGTCAGCTGATAGTATCCGGCTACAGATCTCAAACCCAGACCTCAA  
 AGACCGCATGGTGGAGCAATTCAAGGAGCTCCATCACATCTGGCAGTCCCAGCAGCGTTGCAGCCTGTG  
 GCCAGGCCCTCCTGGAGCAGGCTTGGTGTGGCCAGGGCCCTGGCCTATGCACCCAGCTGGCATGC  
 AA

**ACGCGT**ACGCGGCCGCTCGAGCAGAAACTCATCTCAGAAGAGGATCTGGCAGCAAATGATATCCTGGATT  
 ACAAGGATGACGACGATAAGGTTTAA

**Protein Sequence:**

>RC211941 representing NM\_001098629  
 Red=Cloning site Green=Tags(s)

MNQSI PVAPTPRRVRLKPWLVAQVNSCQYPLQWVNGEKKLFCIPWRHATRHGPSQDGNITFKAWAKE  
 TGKYTEGVDEADPAKWKANLRCALNKSDFRLIYDGRDMPYPYKIYEVCSNGPAPTDSQPPEDYSFGA  
 GEEEEEEELQRMLPSLSLTDVQSGPHMTPYSLLKEDVKWPPTLQPPTLRPPTLQPPTLQPPVVLGPPA  
 PDPSP LAPPPGNPAGFRELLSEVLEPGPLPASLPAGEQLLPDLLISPHMLPLTDLEIKFYRGRPPRAL  
 TISNPHGCRLFYSQLEATQEVELFGPISLEQVRFSPEDIPSDKQRFYTNQLLDVLDRLILQLQGQDL  
 YAIRLCQCKVFWSGPCASAHDCPNPIQREVTKLFSLEHFLNELILFQKGQNTNPPPFEIFFCGEEWP  
 DRKPREKKLITVQVVPVAARLLLEMFSGELSWADSIRLQISNPDLKDRMVEQFKELHHIWQSQRQLQPV  
 AQAPPAGLVGVQGPWMPHAGMQ

**TRTRPLEQKLI**SEEDLAANDILDYKDDDDKV

**Chromatograms:**

[https://cdn.origene.com/chromatograms/mk8064\\_e06.zip](https://cdn.origene.com/chromatograms/mk8064_e06.zip)

**Restriction Sites:**

Sgfl-MluI

**Cloning Scheme:**


**ACCN:** NM\_001098629

**ORF Size:** 1542 bp

**OTI Disclaimer:** The molecular sequence of this clone aligns with the gene accession number as a point of reference only. However, individual transcript sequences of the same gene can differ through naturally occurring variations (e.g. polymorphisms), each with its own valid existence. This clone is substantially in agreement with the reference, but a complete review of all prevailing variants is recommended prior to use. [More info](#)

**OTI Annotation:** This clone was engineered to express the complete ORF with an expression tag. Expression varies depending on the nature of the gene.

**Components:** The ORF clone is ion-exchange column purified and shipped in a 2D barcoded Matrix tube containing 10ug of transfection-ready, dried plasmid DNA (reconstitute with 100 ul of water).

- Reconstitution Method:**
1. Centrifuge at 5,000xg for 5min.
  2. Carefully open the tube and add 100ul of sterile water to dissolve the DNA.
  3. Close the tube and incubate for 10 minutes at room temperature.
  4. Briefly vortex the tube and then do a quick spin (less than 5000xg) to concentrate the liquid at the bottom.
  5. Store the suspended plasmid at -20°C. The DNA is stable for at least one year from date of shipping when stored at -20°C.

**RefSeq:** [NM\\_001098629.3](#)

**RefSeq Size:** 2910 bp

**RefSeq ORF:** 1545 bp

**Locus ID:** 3663

**UniProt ID:** [Q13568](#)

**Cytogenetics:** 7q32.1

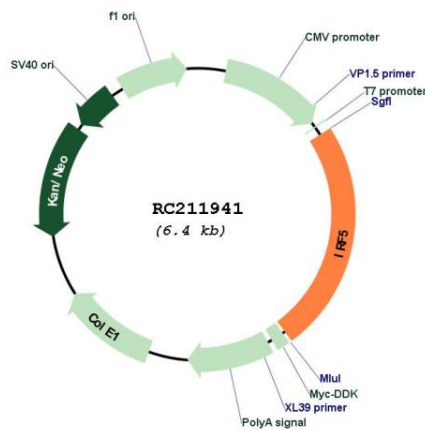
**Protein Families:** Transcription Factors

**Protein Pathways:** Toll-like receptor signaling pathway

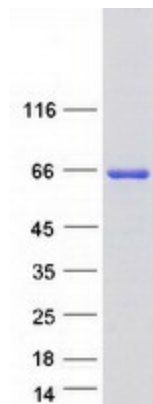
**MW:** 57.8 kDa

**Gene Summary:** This gene encodes a member of the interferon regulatory factor (IRF) family, a group of transcription factors with diverse roles, including virus-mediated activation of interferon, and modulation of cell growth, differentiation, apoptosis, and immune system activity. Members of the IRF family are characterized by a conserved N-terminal DNA-binding domain containing tryptophan (W) repeats. Alternative promoter use and alternative splicing result in multiple transcript variants, and a 30-nt indel polymorphism (SNP rs60344245) can result in loss of a 10-aa segment. [provided by RefSeq, Dec 2016]

**Product images:**



Circular map for RC211941



Coomassie blue staining of purified IRF5 protein (Cat# [TP311941]). The protein was produced from HEK293T cells transfected with IRF5 cDNA clone (Cat# RC211941) using MegaTran 2.0 (Cat# [TT210002]).