

Product datasheet for RC211922

Inhibin beta C chain (INHBC) (NM_005538) Human Tagged ORF Clone

Product data:

Product Type:	Expression Plasmids
Product Name:	Inhibin beta C chain (INHBC) (NM_005538) Human Tagged ORF Clone
Tag:	Myc-DDK
Symbol:	Inhibin beta C chain
Synonyms:	IHBC
Mammalian Cell Selection:	Neomycin
Vector:	pCMV6-Entry (PS100001)
E. coli Selection:	Kanamycin (25 ug/mL)
ORF Nucleotide Sequence:	>RC211922 representing NM_005538 Red=Cloning site Blue=ORF Green=Tags(s)

TTTTGTAATACGACTCACTATAGGGCGGCCGGAATTCGTCGACTGGATCCGGTACCGAGGAGATCTGCCGCCGCGATCGCC

ATGACCTCCTCATTGCTTCTGGCCTTTCTCCTCCTGGCTCCAACCACAGTGGCCACTCCCAGAGCTGGCG
GTCAGTGTCCAGCATGTGGGGGGCCACCTTGGAACTGGAGAGCCAGCGGGAGCTGCTTCTTGATCTGGC
CAAGAGAAGCATCTTGGACAAGCTGCACCTCACCCAGCGCCCAACTGAACCGCCTGTGTCCAGAGCT
GCTTTGAGGACTGCACTGCAGCACCTCCACGGGGTCCCACAGGGGCACTTCTAGAGGACAACAGGGAAC
AGGAATGTGAAATCATCAGCTTTGCTGAGACAGGCCTCTCCACCATCAACCAGACTCGTCTTGATTTTCA
CTTCTCCTCTGATAGAAGTGTGGTACAGGGAGGTCCAGCAGGCCAGTCTCATGTTCTTTGTGCAGCTC
CCTTCCAATACCACTTGACCTTGAAGTGAGAGTCTTGTGCTGGTCCACATAATACCAACCTCACCT
TGGCTACTCAGTACCTGTGGAGGTGGATGCCAGTGGCTGGCATCAACTCCCCCTAGGGCCTGAAGCTCA
AGCTGCCTGCAGCCAGGGGCACCTGACCCTGGAGCTGGTACTTGAAGGCCAGGTAGCCCAGAGCTCAGTC
ATCCTGGGTGGAGCTGCCATAGGCCTTTGTGGCAGCCCGGGTGGAGTTGGGGCAAACACCAGATTC
ACCGACGAGGCATCGACTGCCAAGGAGGGTCCAGGATGTGCTGTCGACAAGAGTTTTTTGTGGACTCCG
TGAGATTGGCTGGCAGCACTGGATCATCCAGCCTGAGGGCTACGCCATGAACTTCTGCATAGGGCAGTGC
CCACTACACATAGCAGGCATGCCTGGTATTGCTGCCTCCTTTCACTGCAGTGCCTCAATCTTCTCAAG
CCAACACAGCTGCAGGCACCACTGGAGGGGCTCATGCTGTGTACCCACGCCAGCCAGCCCTGTCTCT
GCTCTATTATGACAGGGACAGCAACATTGTCAAGACTGACATACTGACATGGTAGTAGAGGCTGTGG
TGCACT

ACGCGTACGCGGCCGCTCGAGCAGAACTCATCTCAGAAGAGGATCTGGCAGCAAATGATATCCTGGATT
ACAAGGATGACGACGATAAGGTTAA



[View online »](#)

Protein Sequence: >RC211922 representing NM_005538
Red=Cloning site Green=Tags(s)

MTSSLLLAFLLLAPTIVATPRAGGQCPACGGPTLELESQRELLLDLAKRSILDKLHLTQRPTLNRPVSRA
 ALRTALQHLHGVPQGALLEDNREQECEIISFAETGLSTINQTRLDFHFSSDRTAGDREVQQASLMFFVQL
 PSNTTWTLKVRVLVLPHTNLTLATQYLLEVDASGWHQLPLGPEAQAACSQGHLELVLEGQVAQSSV
 ILGGAHRPFVAARVRVGGKHQIHRRGIDCQGGSRMCCRQEFFVDFREIGWHDWIIQPEGYAMNFCIGQC
 PLHIAGMPGIAASFHTAVLNLLKANTAAGTTGGGSCCVPTAQRPLSLLYDRDSNIVKTDIPDMVVEACG
 CS

TRTRPLEQKLISEEDLAANDILDYKDDDDKV

Chromatograms: https://cdn.origene.com/chromatograms/mk6161_h12.zip

Restriction Sites: SgfI-MluI

Cloning Scheme:



* The last codon before the Stop codon of the ORF

ACCN: NM_005538

ORF Size: 1056 bp

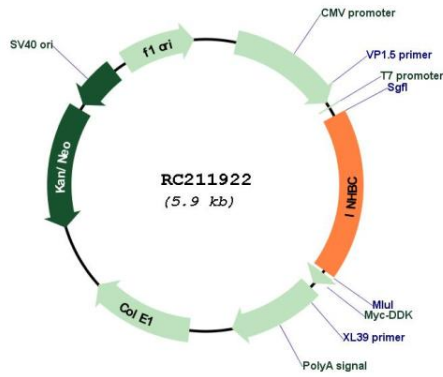
OTI Disclaimer: The molecular sequence of this clone aligns with the gene accession number as a point of reference only. However, individual transcript sequences of the same gene can differ through naturally occurring variations (e.g. polymorphisms), each with its own valid existence. This clone is substantially in agreement with the reference, but a complete review of all prevailing variants is recommended prior to use. [More info](#)

OTI Annotation: This clone was engineered to express the complete ORF with an expression tag. Expression varies depending on the nature of the gene.

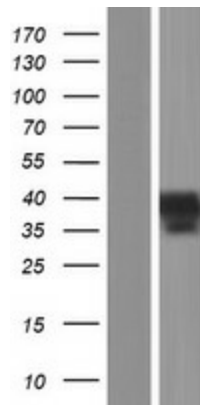
Components: The ORF clone is ion-exchange column purified and shipped in a 2D barcoded Matrix tube containing 10ug of transfection-ready, dried plasmid DNA (reconstitute with 100 ul of water).

Reconstitution Method:	<ol style="list-style-type: none">1. Centrifuge at 5,000xg for 5min.2. Carefully open the tube and add 100ul of sterile water to dissolve the DNA.3. Close the tube and incubate for 10 minutes at room temperature.4. Briefly vortex the tube and then do a quick spin (less than 5000xg) to concentrate the liquid at the bottom.5. Store the suspended plasmid at -20°C. The DNA is stable for at least one year from date of shipping when stored at -20°C.
Note:	Plasmids are not sterile. For experiments where strict sterility is required, filtration with 0.22um filter is required.
RefSeq:	NM_005538.4
RefSeq Size:	1990 bp
RefSeq ORF:	1059 bp
Locus ID:	3626
UniProt ID:	P55103
Cytogenetics:	12q13.3
Domains:	TGF-beta
Protein Families:	Druggable Genome, Secreted Protein
Protein Pathways:	Cytokine-cytokine receptor interaction, TGF-beta signaling pathway
MW:	38.21 kDa
Gene Summary:	This gene encodes a member of the TGF-beta (transforming growth factor-beta) superfamily of proteins. The encoded preproprotein is proteolytically processed to generate a subunit of homodimeric and heterodimeric activin complexes. The heterodimeric complex may function in the inhibition of activin A signaling. Transgenic mice overexpressing this gene exhibit defects in testis, liver and prostate. [provided by RefSeq, Aug 2016]

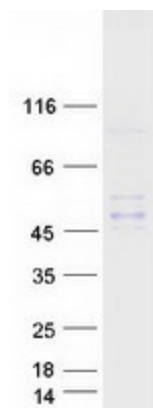
Product images:



Circular map for RC211922



Western blot validation of overexpression lysate (Cat# [LY401700]) using anti-DDK antibody (Cat# [TA50011-100]). Left: Cell lysates from untransfected HEK293T cells; Right: Cell lysates from HEK293T cells transfected with RC211922 using transfection reagent MegaTran 2.0 (Cat# [TT210002]).



Coomassie blue staining of purified INHBC protein (Cat# [TP311922]). The protein was produced from HEK293T cells transfected with INHBC cDNA clone (Cat# RC211922) using MegaTran 2.0 (Cat# [TT210002]).