

## Product datasheet for RC211921

### IL15RA (NM\_002189) Human Tagged ORF Clone

#### Product data:

Product Type:	Expression Plasmids
Product Name:	IL15RA (NM_002189) Human Tagged ORF Clone
Tag:	Myc-DDK
Symbol:	IL15RA
Synonyms:	CD215
Vector:	pCMV6-Entry (PS100001)
E. coli Selection:	Kanamycin (25 ug/mL)
Cell Selection:	Neomycin
ORF Nucleotide Sequence:	>RC211921 representing NM_002189 Red=Cloning site Blue=ORF Green=Tags(s)

TTTTGTAATACGACTCACTATAGGGCGGCCGGAATTCGTCGACTGGATCCGGTACCGAGGAGATCTGCC  
GCC**CGGATCGCC**

ATGGCCCCGGCGGGCGCGGGCTGCCGGACCCTCGGTCTCCCGCGCTGCTACTGCTGCTGCTGCTCC  
GGCCGCCGGCGACGCGGGGCATCACGTGCCCTCCCCCATGTCCGTGGAACACGCAGACATCTGGGTCAA  
GAGCTACAGCTTGTACTCCAGGGAGCGGTACATTTGTAACCTCTGGTTTCAAGCGTAAAGCCGGCAGTCC  
AGCCTGACGGAGTGCGTGTGAACAAGGCCACGAATGTCGCCACTGGACAACCCCCAGTCTCAAATGCA  
TTAGAGACCCTGCCCTGGTTACCAAAGGCCAGGCCACCCTCCACAGTAACGACGGCAGGGGTGACCCC  
ACAGCCAGAGAGCCTCTCCCTTCTGGAAAAGAGCCCGCAGCTTCATCTCCAGCTCAAACAACACAGCG  
GCCACAACAGCAGCTATTGTCCCGGGCTCCCAGCTGATGCCTTCAAAATCACCTTCCACAGGAACCACAG  
AGATAAGCAGTCATGAGTCTCCACGGCACCCCTCTCAGACAACAGCCAAGACCTGGGAACTCACAGC  
ATCCGCCTCCCACAGCCGCCAGGTGTGTATCCACAGGGCCACAGCGACACCCTGTGGCTATCTCCAGC  
TCCACTGTCTGCTGTGTGGCTGAGCGCTGTGTCTCTCCTGGCATGCTACCTCAAGTCAAGGCAAATC  
CCCCGTGGCCAGCGTTGAAATGGAAGCCATGGAGGCTCTGCCGGTGACTTGGGGACCAGCAGCAGAGA  
TGAAGACTTGAAAACCTGCTCTCACCACTA

**ACGCGT**ACGCGGCCGCTCGAGCAGAAACTCATCTCAGAAGAGGATCTGGCAGCAAATGATATCCTGGATT  
ACAAGGATGACGACGATAAGGTTTAA



[View online »](#)

Protein Sequence: >RC211921 representing NM\_002189  
 Red=Cloning site Green=Tags(s)

MAPRRARGCRTLGLPALLLLLLLRPPATRGITCPPPMSVEHADIWVKSYSLSRERYICNSGFKRKAGTS  
 SLTECVLNKATNVAHWTPSLKCIDRPALVHQRAPPSTVTTAGVTPQPELSPSGKEPAASSPSSNNTA  
 ATTAIVPGSQLMPKSPSTGTTEISSHESSHGTPSQTTAKTWELTASASHQPPGVYPQGHSDTTVAIST  
 STVLLCGLSAVSLLLACYLKSQRTPPLASVEMEAMEALPVTWGTSSRDELENCSSHLL

TRTRPLEQKLISEEDLAANDILDYKDDDDKV

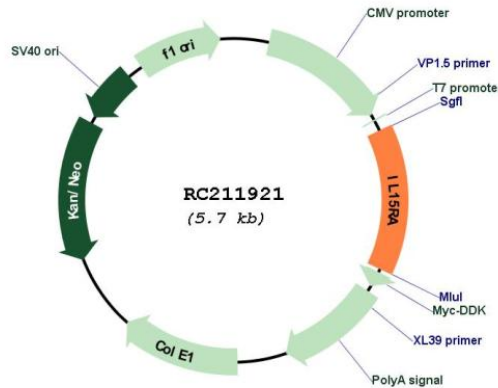
Chromatograms: [https://cdn.origene.com/chromatograms/mk6173\\_h02.zip](https://cdn.origene.com/chromatograms/mk6173_h02.zip)

Restriction Sites: SgfI-MluI

Cloning Scheme:



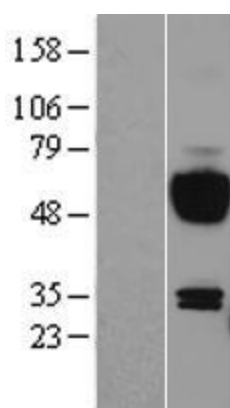
Plasmid Map:



ACCN: NM\_002189

ORF Size:	801 bp
OTI Disclaimer:	The molecular sequence of this clone aligns with the gene accession number as a point of reference only. However, individual transcript sequences of the same gene can differ through naturally occurring variations (e.g. polymorphisms), each with its own valid existence. This clone is substantially in agreement with the reference, but a complete review of all prevailing variants is recommended prior to use. <a href="#">More info</a>
OTI Annotation:	This clone was engineered to express the complete ORF with an expression tag. Expression varies depending on the nature of the gene.
RefSeq:	<a href="#">NM_002189.1</a> , <a href="#">NM_002189.2</a> , <a href="#">NM_002189.3</a> , <a href="#">NP_002180.1</a>
RefSeq Size:	1610 bp
RefSeq ORF:	804 bp
Locus ID:	3601
Domains:	CCP
Protein Families:	Druggable Genome, Secreted Protein
Protein Pathways:	Cytokine-cytokine receptor interaction, Jak-STAT signaling pathway
MW:	28.22 kDa
Gene Summary:	This gene encodes a cytokine receptor that specifically binds interleukin 15 (IL15) with high affinity. The receptors of IL15 and IL2 share two subunits, IL2R beta and IL2R gamma. This forms the basis of many overlapping biological activities of IL15 and IL2. The protein encoded by this gene is structurally related to IL2R alpha, an additional IL2-specific alpha subunit necessary for high affinity IL2 binding. Unlike IL2RA, IL15RA is capable of binding IL15 with high affinity independent of other subunits, which suggests distinct roles between IL15 and IL2. This receptor is reported to enhance cell proliferation and expression of apoptosis inhibitor BCL2L1/BCL2-XL and BCL2. Multiple alternatively spliced transcript variants of this gene have been reported. [provided by RefSeq, Apr 2010]

### Product images:



Western blot validation of overexpression lysate (Cat# [LY400794]) using anti-DDK antibody (Cat# [TA50011-100]). Left: Cell lysates from untransfected HEK293T cells; Right: Cell lysates from HEK293T cells transfected with RC211921 using transfection reagent MegaTran 2.0 (Cat# [TT210002]).