

Product datasheet for **RC211920**

AP1B1 (NM_001127) Human Tagged ORF Clone

Product data:

Product Type:	Expression Plasmids
Product Name:	AP1B1 (NM_001127) Human Tagged ORF Clone
Tag:	Myc-DDK
Symbol:	AP1B1
Synonyms:	ADTB1; AP105A; BAM22; CLAPB2; KIDAR
Mammalian Cell Selection:	Neomycin
Vector:	pCMV6-Entry (PS100001)
E. coli Selection:	Kanamycin (25 ug/mL)



[View online »](#)

ORF Nucleotide Sequence:

>RC211920 representing NM_001127
 Red=Cloning site Blue=ORF Green=Tags(s)

TTTTGTAATACGACTCACTATAGGGCGGCCGGGAATTCGTCGACTGGATCCGGTACCGAGGAGATCTGCC
 GCC**CGATCGCC**

ATGACTGACTCAAATATTTACCACGACCAAGAAAGGGGAGATCTTCGAGCTGAAGGCAGAGCTCAACA
 GTGACAAGAAGGAGAAGAAGAAGGAGGCAGTGAAGAAAGTGATTGCATCGATGACCGTGGGCAAAGATGT
 CAGTGCCTCTTCCCCGATGTGGTCAACTGCATGCAGACGGACAACCTGGAGCTGAAGAAGCTAGTATAC
 CTCTACTTGATGAATTACGCCAAGAGTCAGCCTGACATGGCCATTATGGCCGTCAACACCTTTGTGAAGG
 ACTGTGAGGACCCCAACCCCTCATCCGAGCCCTGGCAGTGGGACCATGGGCTGCATCCGCGTTGACAA
 GATCACAGAGTACCTGTGCGAGCCACTCCGGAAGTGCCTGAAGGACGAGGATCCATATGTGCGCAAGACA
 GCAGCTGTGTGCGTGGCCAAGCTCCACGACATCAACGCCAGCTGGTGGAGGACCAGGGCTTCTGGACA
 CCCTTAAAGACCTCATCTCGACTCTAACCCATGGTGGTGGCCAATGCAGTGGCAGCGCTCTCAGAAAT
 TGCCGAGTCTACCCAGCAGCAACCTGCTCGATCTGAACCCACAGTCCATCAACAAGCTGCTGACAGCC
 CTAATGAGTGCACCGAGTGGGGCCAGATCTTCACTCCTGGACTGCCTCGCAACTATATGCCAAGGACG
 ACCGCGAGGCCAGAGCATCTGTGAGCGGGTACCCCCAGGCTCTCCCATGCCAACTCCGCTGTGGTGTCT
 CTCTGCTGTGAAGGTGCTGATGAAGTTCATGGAGATGTTGTCTAAGGACTTGGACTACTACGGCACACTG
 CTCAAGAAGCTGGCCCCACCCCTGGTCACACTGCTGTCAGCCGAGCCAGAGCTGCAGTATGTGGCCCTGC
 GCAACATCAATCTCATCGTGCAGAAAAGGCTGAGATCCTGAAGCATGAGATGAAGGTGTTCTTCGTGAA
 GTACAACGACCTATCTACGTGAAGCTGGAGAAGCTGGACATCATGATCCGCTGGCCTCTCAGGCCAAC
 ATCGCCAGGTGTTGGCAGAGCTGAAAGAGTACGCAACAGAAGTGGATGTGGACTTTGTACGGAAGGCTG
 TGCGCTATTGGCCGCTGCGCCATCAAGGTGGACAATCTGCGGAGCGTGTGTGAGCAGCTGCTCGA
 CCTCATCCAGACCAAGTCAACTATGTGGTCCAGGAGGCCATCGTGGTCAATCAAGGACATCTTCCGCAAG
 TACCCCAACAAGTATGAGAGTGTGATTGCCACACTGTGTGAGAATCTGGACTCCCTGGATGAGCCTGAGG
 CCCGGGCTGCCATGATCTGGATTGTGGCGAGTACGCGGAACGGATCGACAACGCAGATGAGCTGTGGA
 GAGCTTCTCGAGGGCTTCCATGACGAGAGCACACAGGTCCAGCTGCAGCTGCTGACAGCCATTGTGAAA
 CTCTTTCTAAAGAAGCCAACAGAGACCCAGGAGCTGGTGCAGCAGGTCTCAGTTTGGCCACTCAGGACT
 CAGATAACCCAGACCTGCGGGACCGTGGCTACATCTACTGGCGCTGCTGTCCACGGACCCGGTGGCAGC
 CAAGGAGGTGGTGTGGCTGAGAAGCCACTCATCTCTGAAGAGACGGACCTCATCGAGCCACACTGTTA
 GACGAGCTTATCTGCTACATCGGCACGCTGGCTCCGTCTACCATAGCCTCCCAGTGCCTTTGTGGAGG
 GGGGCCGGGGCGTGTGACAAGAGCCTGCCACCTCGCAGCGCCTCGAGTGAAGGCGCAGAGAGCCCTGA
 GACAGCCCTACTGGAGCACCTCCTGGGAGCAGCCAGATGTATCCCGCCAGGGCGACCTGCTGGGT
 GACCTCCTCAACCTGGACCTCGGCCCCAGTGAAGCGCCACCCCTGGCCACCTCCTCGGTGCAGATGG
 GAGCTGTGGACCTTCTTGGCGGTGGCCTTGACAGCCTGATGGGGATGAGCCTGAAGGGATTGGGGCAC
 CAACTTCGTGGCACCTCCAACAGCAGCAGTACCAGCCAATCTTGGAGCACCCATCGGCAGTGGCCTGAGT
 GACCTCTTTGACCTGACCAGTGGCGTGGCACCCCTGTGAGGATCATATGTGGCCCCAAAGCAGTCTGGC
 TCCCAGCCATGAAGGCTAAGGGGCTGGAGATCTCAGGCACCTTACCCGCCAGGTGGGCTCCATCTCCAT
 GGACCTGCAGCTGACCAACAAGGCCTTGCAGGTGATGACCGACTTGGCCATCCAGTTCAACCGCAACAGC
 TTTGGCCTGGCCCCCGCCCCCTCCAGGTCCACGCGCCACTCAGCCCCAACAGACAGTGGAGATCT
 CCCTGCCTCTCAGCACGGTGGGCTCGGTGATGAAGATGGAGCCTCTGAACAACCTCCAGGTGGCCGTGAA
 GAACAACATCGATGTCTTCTACTTACGACCTTGTACCCACTGCACATCCTCTTGTGGAGGACGGGAAG
 ATGGACCGGCAGATGTTCTGGCCACATGGAAGGATATCCCAATGAGAATGAGGCCAGTTCAGATCA
 GAGACTGCCCCCTCAATGCAGAGGCTGCGAGCAGCAAGCTGCAGAGCAGCAACATCTTCACTGTGCCAA
 GAGGAACGTGGAGGGCCAGGACATGCTCTACCAGTCCCTGAAGCTGACCAACGGCATCTGGGTGCTGGCG
 GAGCTGCGGATCCAGCCGGCAACCCAGCTGCACGGACTTAGAGCTGTCCCTGAAGTGTGAGCACCAG
 AGGTGTCCAGCACGTGTACCAGGCTACGAGACCATCCTCAAGAAC

ACGCGTACGCGGCCGCTCGAGCAGAAACTCATCTCAGAAGAGGATCTGGCAGCAAATGATATCCTGGATT
 ACAAGGATGACGACGATAAGGTTTAA

Protein Sequence: >RC211920 representing NM_001127
Red=Cloning site Green=Tags(s)

```

MTDSKYFTTTKKGEIFELKAELNSDKKEKKKEAVKKVIASMTVGKDVSALEFPDVVNCMQTDNLELKKLVY
LYLMNYAKSQPDMAIMAVNTFFVKDCEDPNPLIRALAVRTMGCIRVDKITEYLCEPLRCKLKDEDYPYRKT
AAVCVAKLHDINAQLVEDQGFLDTLKDLSDSNPMVVANAVAALSEIAESHPSSNLLDLNPQSINKLLTA
LNECTEWGQIFILDCLANYPKDDREAQSI CERVT PRLSHANSAVVL SAVKVL MKFMEMLSKDLLDYGGTL
LKKLAPPLVTLLSAEPQLQYVALRNINLIVQKRPEILKHEMKVFFVKYNDPIYVKLEKLDIMIRLASQAN
IAQVLAELKEYATEVDVDFVRKAVRAIGRAIKVEQSAERCSTLLDLIQTKVNYVYVQEAIVVVKIDIFRK
YPNKYESVIATLCENLDSLDEPEARAAMIWIVGEYAERIDNADELLESFLEGFHDESTQVQLQLLTAIVK
LFLKKTPTETQELVQVLSLATQSDNPDLRDRGYIYWRLLSTDPVAAKEVVLAEKPLISEETDLIEPTLL
DELICYIGTLASVYHKPPSAFVEGGRGVVHKS LPPRTASSESAESPETAPT GAPPGEQPDVIPAQGDLLG
DLLNLDL GPPVSGPPLATSSVQMGAVDLLGGGLDSL MGDEPEGIGGTNFVAPPTAAVPANL GAPIGSGLS
DLFDL TSGVGTLSGSYVAPKAVWLPAMKAKGLEISGTFTRQVGSISMDLQLTNKALQVMTDFAIQFNRS
FGLAAPLQVHAPLSPNQTV EISLPLSTVGSVMKMEPLNNLQVAVKNNIDVFYFSTLYPLHILFVEDGK
MDRQMFLATWKDIPNENAQFQIRDCPLNAEAASSKLQSSNIFTVAKRNV EGQDMLYQSLKLTNGIWLVA
ELRIQPGNPSTDL ELSLKCRAPEV SQHVYQAYETILKN
    
```

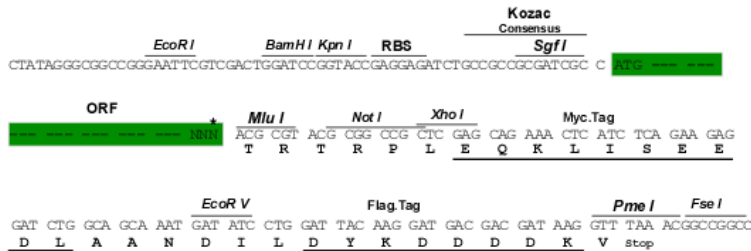
TRTRPLEQKLISEEDLAANDILDYKDDDDKV

Chromatograms: https://cdn.origene.com/chromatograms/mk8026_f01.zip

Restriction Sites: SgfI-MluI

Cloning Scheme:

Cloning sites used for ORF Shuttling:



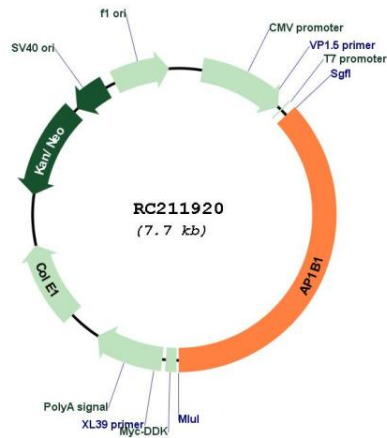
* The last codon before the Stop codon of the ORF

ACCN: NM_001127

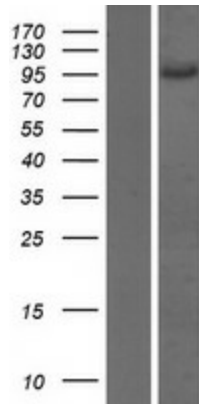
ORF Size: 2847 bp

OTI Disclaimer:	The molecular sequence of this clone aligns with the gene accession number as a point of reference only. However, individual transcript sequences of the same gene can differ through naturally occurring variations (e.g. polymorphisms), each with its own valid existence. This clone is substantially in agreement with the reference, but a complete review of all prevailing variants is recommended prior to use. More info
OTI Annotation:	This clone was engineered to express the complete ORF with an expression tag. Expression varies depending on the nature of the gene.
Components:	The ORF clone is ion-exchange column purified and shipped in a 2D barcoded Matrix tube containing 10ug of transfection-ready, dried plasmid DNA (reconstitute with 100 ul of water).
Reconstitution Method:	<ol style="list-style-type: none">1. Centrifuge at 5,000xg for 5min.2. Carefully open the tube and add 100ul of sterile water to dissolve the DNA.3. Close the tube and incubate for 10 minutes at room temperature.4. Briefly vortex the tube and then do a quick spin (less than 5000xg) to concentrate the liquid at the bottom.5. Store the suspended plasmid at -20°C. The DNA is stable for at least one year from date of shipping when stored at -20°C.
Note:	Plasmids are not sterile. For experiments where strict sterility is required, filtration with 0.22um filter is required.
RefSeq:	NM_001127.4
RefSeq Size:	4194 bp
RefSeq ORF:	2850 bp
Locus ID:	162
UniProt ID:	Q10567
Cytogenetics:	22q12.2
Domains:	Adaptin_N, Alpha_adaptinC2
Protein Pathways:	Lysosome
MW:	104.6 kDa
Gene Summary:	Adaptor protein complex 1 is found at the cytoplasmic face of coated vesicles located at the Golgi complex, where it mediates both the recruitment of clathrin to the membrane and the recognition of sorting signals within the cytosolic tails of transmembrane receptors. This complex is a heterotetramer composed of two large, one medium, and one small adaptin subunit. The protein encoded by this gene serves as one of the large subunits of this complex and is a member of the adaptin protein family. This gene is a candidate meningioma gene. Alternative splicing results in multiple transcript variants. [provided by RefSeq, Oct 2009]

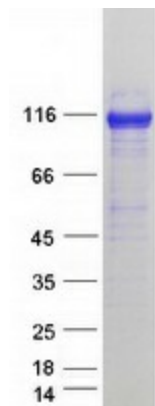
Product images:



Circular map for RC211920



Western blot validation of overexpression lysate (Cat# [LY420112]) using anti-DDK antibody (Cat# [TA50011-100]). Left: Cell lysates from untransfected HEK293T cells; Right: Cell lysates from HEK293T cells transfected with RC211920 using transfection reagent MegaTran 2.0 (Cat# [TT210002]).



Coomassie blue staining of purified AP1B1 protein (Cat# [TP311920]). The protein was produced from HEK293T cells transfected with AP1B1 cDNA clone (Cat# RC211920) using MegaTran 2.0 (Cat# [TT210002]).