

## Product datasheet for **RC211916**

### **BSDC1 (NM\_018045) Human Tagged ORF Clone**

#### **Product data:**

Product Type:	Expression Plasmids
Product Name:	BSDC1 (NM_018045) Human Tagged ORF Clone
Tag:	Myc-DDK
Symbol:	BSDC1
Mammalian Cell Selection:	Neomycin
Vector:	pCMV6-Entry (PS100001)
E. coli Selection:	Kanamycin (25 ug/mL)



[View online »](#)

**ORF Nucleotide Sequence:**

>RC211916 representing NM\_018045  
 Red=Cloning site Blue=ORF Green=Tags(s)

TTTTGTAATACGACTCACTATAGGGCGGCCGGAATTCGTCGACTGGATCCGGTACCGAGGAGATCTGCC  
 GCC**CGGATCGCC**

ATGGCGGAAGGGGAGGACGTGGGATGGTGGCGGAGCTGGCTGCAGCAGAGCTACCAAGCAGTCAAAGAGA  
 AGTCCTCTGAAGCCTTGGAGTTTATGAAGCGGGACCTGACGGAGTTTACCCAGGTGGTGCAGCATGACAC  
 GCCTGTACCATCGCAGCCACGGCCAGCGTGGTCAAGGAGAAGCTGGCTATTGCAGCCTGTTCCCGGGC  
 GCTTGCTTCTCTGCCGTTCTCTATACAGACGGAAGGCTCCTCAGGAGCAACAGAGAAGATGAAGAAAG  
 GGTATCTGACTTCTAGGGGTGATCTCAGACACCTTTGCCCTTCGCCAGACAAAACCTCGACTGCGA  
 TGTCATCACCTGATGGGCACACCGTCTGGCACAGCTGAGCCCTATGATGGCACCAAGGCTCGCCTCTAT  
 AGCCTGCAGTCGGACCCAGAACCTACTGTAATGAACCAGATGGGCCCCCGGAATTGTTTGACGCTGGC  
 TTTCCAGTTCTGCTTGGAGGAGAAGAAGGGGAGATCTCAGAGCTCCTTGTAGGCAGCCCTCCATCCG  
 GGCCCTACACCAAGATGGTTCAGCAGCTGTTCCATTTCAGAATTCTGGCATCGGTATTTCTATAAA  
 GTCATCAGTTGGAGCAGGAGCAGGCCCGGAGGACGCCCTGAAGCAGCGGGCGGAACAGAGCATCTCTG  
 AAGAGCCCGCTGGGAGGAGGAGGAAGAGGAGCTCATGGGCATTTACCCATATCTCCAAAAGAGGCAAA  
 GGTTCCTGTGGCCAAAATTTCTACATTCCTGAAGGAGAACCTGGCCCCAGAGCCCTGTGAAGAGAAT  
 CTGGTGACTTCAGTTGAGCCCCAGCAGAGGTGACTCCATCAGAGAGCAGTGAGAGCATCTCCCTCGTGA  
 CACAGATCGCCAACCCGGCCACTGCACCTGAGGCACGAGTGCTACCAAGGACCTGTCCAAAAGCTGCT  
 AGAGGCATCCTTGGAGGAACAGGGCCTGGCTGTGGATGTGGGTGAGACTGGACCCACCCCTATTAC  
 TCCAAGCCCCTAACGCCCTGTGGCCACACCGCGGCCAGAGCCAGGCCCTCCAGCCAGAGTAGAGACTC  
 TGAGGGAGGAGGGCCACAGACTTACGGGTGTTTGGCTGAACCTCGGATAGTGGGAAGTACTACCCCTC  
 CAACAATGGAAAGAAAGGCTCAAGCACGGACATCAGTGAGGACTGGGAGAAAGACTTTGACTTGGACATG  
 ACTGAAGAGGAGGTGCAGATGGCACTTTCCAAAGTGGATGCCTCCGGGGAGGTGAGTGGGCTGGTGGT  
 CAGAGGGAAGCGAGCCTAATGGTCTGGGTGTGAGAGCTCTCCCAGCCAGCCAGCTGTCCCTCAGGA  
 GGGTCCCTGCTCTGTCTGAGG

**ACGCGT**ACGCGGCCGCTCGAGCAGAACTCATCTCAGAAGAGGATCTGGCAGCAATGATATCTGGATT  
 ACAAGGATGACGACGATAAGGTTTAA

**Protein Sequence:**

>RC211916 representing NM\_018045  
 Red=Cloning site Green=Tags(s)

MAEGEDVGVWRSWLQQSYQAVKEKSSEALEFMKRDLTEFTQVVQHDTACTIAATASVVKEKLAIAACSRG  
 ACFLCPFSIQTEGSSGATEKMKKGLSDFLGVISDTFAPSPDKTIDCDVITLMGTSPSGTAEPYDGTKARLY  
 SLQSDPATYCNEPDGPPELFDWLQFCLLEEKGEISELLVGSPSIRALYTKMVPAAVSHSEFWHRYFYK  
 VHQLQEQARRDALKQRAEQSISEEPGWEEEEELMGIISPISPEAKVPVAKISTFPEGEPGPQSPCEEN  
 LVTSVEPPAEVTPSESSSISLVTQIANPATAPEARVLPKDLSQLLEASLEEQLAVDVGETGSPPIH  
 SKPLTPAGHTGGPEPRPPARVETLREEAPTDLRVFELNSDSGKSTPSNNGKKSSTDISDWEKDFDLDM  
 TEEEVQMALSKVDASGEVSGPGGSESEPNPGCESSPQPAQLSPQEGPCSLR

**TR**TRPLEQKLISEEDLAANDILDYKDDDDKV

**Chromatograms:**

[https://cdn.origene.com/chromatograms/mk8026\\_f03.zip](https://cdn.origene.com/chromatograms/mk8026_f03.zip)

**Restriction Sites:**

Sgfl-Mlul

**Cloning Scheme:**

Cloning sites used for ORF Shutting:



\* The last codon before the Stop codon of the ORF

**ACCN:** NM\_018045

**ORF Size:** 1422 bp

**OTI Disclaimer:** The molecular sequence of this clone aligns with the gene accession number as a point of reference only. However, individual transcript sequences of the same gene can differ through naturally occurring variations (e.g. polymorphisms), each with its own valid existence. This clone is substantially in agreement with the reference, but a complete review of all prevailing variants is recommended prior to use. [More info](#)

**OTI Annotation:** This clone was engineered to express the complete ORF with an expression tag. Expression varies depending on the nature of the gene.

**Components:** The ORF clone is ion-exchange column purified and shipped in a 2D barcoded Matrix tube containing 10ug of transfection-ready, dried plasmid DNA (reconstitute with 100 ul of water).

**Reconstitution Method:**

1. Centrifuge at 5,000xg for 5min.
2. Carefully open the tube and add 100ul of sterile water to dissolve the DNA.
3. Close the tube and incubate for 10 minutes at room temperature.
4. Briefly vortex the tube and then do a quick spin (less than 5000xg) to concentrate the liquid at the bottom.
5. Store the suspended plasmid at -20°C. The DNA is stable for at least one year from date of shipping when stored at -20°C.

**RefSeq:** [NM\\_018045.5](#)
**RefSeq Size:** 4729 bp

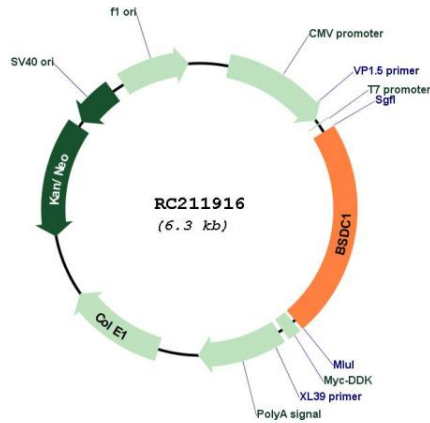
**RefSeq ORF:** 1293 bp

**Locus ID:** 55108

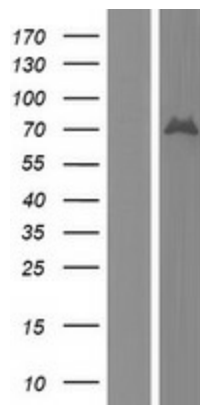
**UniProt ID:** [Q9NW68](#)

**Cytogenetics:** 1p35.1  
**Domains:** BSD  
**MW:** 51.17 kDa

**Product images:**



Circular map for RC211916



Western blot validation of overexpression lysate (Cat# [LY413355]) using anti-DDK antibody (Cat# [TA50011-100]). Left: Cell lysates from untransfected HEK293T cells; Right: Cell lysates from HEK293T cells transfected with RC211916 using transfection reagent MegaTran 2.0 (Cat# [TT210002]).