

Product datasheet for **RC211915**

ST7 (NM_018412) Human Tagged ORF Clone

Product data:

Product Type:	Expression Plasmids
Product Name:	ST7 (NM_018412) Human Tagged ORF Clone
Tag:	Myc-DDK
Symbol:	ST7
Synonyms:	ETS7q; FAM4A; FAM4A1; HELG; RAY1; SEN4; TSG7
Mammalian Cell Selection:	Neomycin
Vector:	pCMV6-Entry (PS100001)
E. coli Selection:	Kanamycin (25 ug/mL)



[View online »](#)

ORF Nucleotide Sequence:

>RC211915 representing NM_018412
 Red=Cloning site Blue=ORF Green=Tags(s)

TTTTGTAATACGACTCACTATAGGGCGGCCGGGAATTCGTCGACTGGATCCGGTACCGAGGAGATCTGCC
 GCC**GCGATCGCC**

ATGGCTGAAGCGGCCACGGGCTTTCTGGAGCAGCTCAAGTCTGCATAGTTTGGTCTTGACGTATCTGT
 GGACCGTGTGTTCTTCATCGTGTATTCTGGTCTACATCCTGCGGGTGCCTTTGAAAATCAACGACAA
 CTTGAGCACAGTGAAGTGTGTTTGAACACATTAAACACCGAAGTCTACGTGGCCCTAACAGGCACTTCC
 TCACTAATATCAGGGCTATTTTGAATTTGAATGGTGGTATTTTCGAAATACGGAACCTCATTCACTG
 AACAGTCTCAGTAAGCCACTTGCGCCCTTCTGGGAGGGTGGACAACAACCTTCCAACAATTCTAA
 TTCCAGTAACGGGGACTCAGATTCCAATAGGCAAAGTGTCTCAGAATGCAAAGTATGGCGAAATCCACTA
 AATTTATTTAGGGGTGCTGAATACAATCGGTATACTTGGGTGACAGGACGAGAGCCTCTTACTTACTATG
 ACATGAATCTCTCTGCCAAGACCACCAGACATCTTTACTTGTGACTCGGACCATCTGCGTCCCGCAGA
 TGCAATAATGCAGAAAGCCTGGAGAGAGAGAAACCCCAAGCTAGGATTTCTGCAGCTCATGAAGCCTTG
 GAGATAAATGAGTGTGCAACTGCTTATATCTCTTGGCTGAAGAGGAAGCAACAACCATGCTGAAGCAG
 AAAAAATTTAAGCAGGCCCTGAAGGCTGGAGATGGCTGTTACCGACGCTCTCAGCAGCTACAACATCA
 TGGATCCCAGTATGAAGCCCAACATAGACGAGACACCAATGTCTTGGTGTACATCAAAGAAGGCTAGCA
 ATGTGTGCCAGAAGACTCGGGAGGACCAGGGAAGCAGTAAAAATGATGAGAGATTTAATGAAGGAGTTCC
 CCCTTCTGAGTATGTTCAATATCCATGAAAACCTTTTAGAAGCCCTTCTGGAACTACAAGCATATGCTGA
 TGTTCAAGCAGTCTTAGCAAAGTATGATGATATAAGCTTACCAAAGTCAAGCAACATATGCTACACAGCT
 GCTTTGCTCAAAGCAAGAGCTGTCTCTGACAAATCTCTCCTGAGGCTGCATCTCGGCGGGGCTGAGCA
 CAGCAGAGATGAATGCAGTAGAGGCCATTCATAGAGCTGTGGAATTCAATCCTCATGTGCCAAAAATACCT
 ACTAGAAATGAAAAGCTTAATCCTACCCCAAGACATATCCTGAAGAGAGGAGACAGTGAAGCAATAGCA
 TATGCATTCTTTCATCTTGCACACTGGAAGAGAGTGAAGGGGCTTTGAATCTTTTGCATTGTACGTGGG
 AAGGCACTTTTCGGATGATCCCTTATCCCTTGGAAAAGGGGCACCTATTTTATCCTTACCCAATCTGTAC
 AGAAACAGCAGACCGAGAGCTGCTTCCATCTTCCATGAAGTCTCAGTTTACCCAAGAAGGAGCTTCCC
 TTCTTTATCTTTACTGCTGGATTATGTTCTTACAGCCATGCTGGCCCTCTGACACATCAGTTCC
 CGGAACCTATGGGGTCTTCGAAAAGCTTCTCAGCACTTTGTTTGGCCCTTAAACTTTGTCATGGA
 GAAAGTGGAGAGCATCTCCCATCCAGTCTGTGGCACCAGCTAACACGGATC

ACGCGTACGCGGCCGCTCGAGCAGAAACTCATCTCAGAAGAGGATCTGGCAGCAAATGATATCCTGGATT
 ACAAGGATGACGACGATAAGGTTTAA

Protein Sequence:

>RC211915 representing NM_018412
 Red=Cloning site Green=Tags(s)

MAEAATGFLEQLKSCIVSWTYLWTVWFFIVLFLVYILRVPLKINDNLSTVSMFLNLTLPKFYVALTGTS
 SLISGLILIFEWYFRKYGTSFIEQVSVSHLRPLLGGVDNNSNNSNNGSDSDSNRQSVSECKVWRNPL
 NLFRTAEYNYRTWVTGREPLTYDMNLSAQDHQTFCTDSDHLRPADAIMQKAWRERNPQARISAAHEAL
 EINECATAYILLAEAEATTIAEAEKLFKQALKAGDGCYRRSQQLQHGSQYEAQHRRDNTNLVYIKRRLA
 MCARRLGRTRAVKMMRDLMEFPLLSMFNIHENLLEALLELQAYADVQAVLAKYDDISLPKSATICYTA
 ALLKARAVSDFKFSPEAASRRGLSTAEMNAVEAIHRAVEFNPHVPKYLLEMKSLILPPEHILKRGDSEIAI
 YAFFHLAHWKRVEGALNLLHCTWEGTFRMIYPYPLEKGHLYPYPYICTETADRELLPSFHEVSVYPPKELP
 FFILFTAGLCSFTAMLALLTHQPELMGVFAKAFSTLFAPLNFVMEKVESILPSSLWHQLTRI

TRTRPLEQKLISEEDLAANDILDYKDDDDKV

Chromatograms:

https://cdn.origene.com/chromatograms/mk6849_f11.zip

Restriction Sites:

Sgfl-MluI

Cloning Scheme:

ACCN: NM_018412

ORF Size: 1662 bp

OTI Disclaimer: The molecular sequence of this clone aligns with the gene accession number as a point of reference only. However, individual transcript sequences of the same gene can differ through naturally occurring variations (e.g. polymorphisms), each with its own valid existence. This clone is substantially in agreement with the reference, but a complete review of all prevailing variants is recommended prior to use. [More info](#)

OTI Annotation: This clone was engineered to express the complete ORF with an expression tag. Expression varies depending on the nature of the gene.

Components: The ORF clone is ion-exchange column purified and shipped in a 2D barcoded Matrix tube containing 10ug of transfection-ready, dried plasmid DNA (reconstitute with 100 ul of water).

- Reconstitution Method:**
1. Centrifuge at 5,000xg for 5min.
 2. Carefully open the tube and add 100ul of sterile water to dissolve the DNA.
 3. Close the tube and incubate for 10 minutes at room temperature.
 4. Briefly vortex the tube and then do a quick spin (less than 5000xg) to concentrate the liquid at the bottom.
 5. Store the suspended plasmid at -20°C. The DNA is stable for at least one year from date of shipping when stored at -20°C.

RefSeq: [NM_018412.4](#)
RefSeq Size: 2045 bp

RefSeq ORF: 1665 bp

Locus ID: 7982

UniProt ID: [Q9NRC1](#)

Cytogenetics: 7q31.2

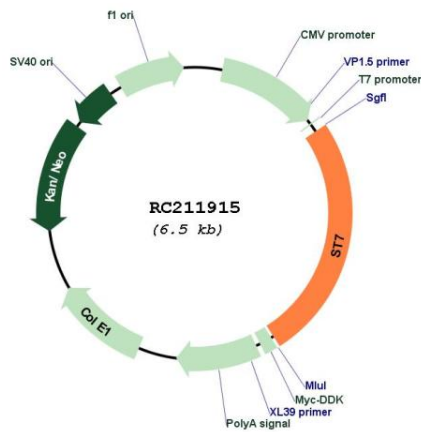
Domains: ST7

Protein Families: Transmembrane

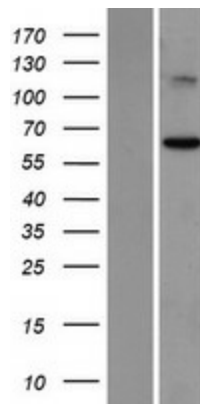
MW: 63.3 kDa

Gene Summary: The gene for this product maps to a region on chromosome 7 identified as an autism-susceptibility locus. Mutation screening of the entire coding region in autistic individuals failed to identify phenotype-specific variants, suggesting that coding mutations for this gene are unlikely to be involved in the etiology of autism. The function of this gene product has not been determined. Transcript variants encoding different isoforms of this protein have been described. [provided by RefSeq, Jul 2008]

Product images:



Circular map for RC211915



Western blot validation of overexpression lysate (Cat# [LY413067]) using anti-DDK antibody (Cat# [TA50011-100]). Left: Cell lysates from untransfected HEK293T cells; Right: Cell lysates from HEK293T cells transfected with RC211915 using transfection reagent MegaTran 2.0 (Cat# [TT210002]).