

Product datasheet for RC211913

LCN8 (NM_178469) Human Tagged ORF Clone

Product data:

Product Type:	Expression Plasmids
Product Name:	LCN8 (NM_178469) Human Tagged ORF Clone
Tag:	Myc-DDK
Symbol:	LCN8
Synonyms:	EP17; LCN5
Mammalian Cell Selection:	Neomycin
Vector:	pCMV6-Entry (PS100001)
E. coli Selection:	Kanamycin (25 ug/mL)
ORF Nucleotide Sequence:	>RC211913 ORF sequence Red=Cloning site Blue=ORF Green=Tags(s)

TTTTGTAATACGACTCACTATAGGGCGGCCGGAATTCGTCGACTGGATCCGGTACCGAGGAGATCTGCC
GCC**CGATCGCC**

ATGGAGGAGCTGGACCGGCAGAAGATTGGAGGATTCTGGAGGGAAGTCGGTGTGGCCTCCGATCAAAGCC
TGGTGCTGACGGCCCGAAGCGGGTGGAGGGCTTGTTCCTCACCTTGAGCGGGAGTAACCTGACCGTGAA
GGTTGCATATAACAGCTCAGGAAGCTGTGAGATAGAGAAGATCGTGGGCTCAGAAATAGACAGTACGGGA
AAATTCGCTTTTCTGGCCACAGAGAGATCCACGTGCTGGACCCGACTACGAGGGCTACGCCATCTGC
GGGTGTCCTGATGTGGCGGGCAGGAACCTTCGCGTCTCAAGTACTTTACTCGGAGCCTTGAGGACAA
GGACCGGCTGGGGTTCTGGAAGTTTCGGGAGCTGACAGCAGACACTGGTCTCTACCTGGCGCCCGCCT
GGCGGTGTGCCGAGCTCTGAAGGAGGAGCTGATT

ACGCGTACGCGGCCGCTCGAGCAGAACTCATCTCAGAAGAGGATCTGGCAGCAAATGATATCCTGGATT
ACAAGGATGACGACGATAAGGTTTAA

Protein Sequence:	>RC211913 protein sequence Red=Cloning site Green=Tags(s)
-------------------	--

MEELDRQKIGGFVREVGVASDQSLVLTAPKRVEGLFLTLSGSNLTVKVAYNSSGSCEIEKIVGSEIDSTG
KFAPPGHREIHVLDTDYEGYAILRVSLMWRGRNFRVLKYFTRSLIEDKDRLGWKFRELTA DTGLYLAARP
GRCAELLKEELI

TRTRPLEQKLI SEEDLAANDILDYKDDDDKV

Chromatograms:	https://cdn.origene.com/chromatograms/mk6468_e12.zip
----------------	---



[View online »](#)

Restriction Sites: SgfI-MluI

Cloning Scheme:



ACCN: NM_178469

ORF Size: 456 bp

OTI Disclaimer: The molecular sequence of this clone aligns with the gene accession number as a point of reference only. However, individual transcript sequences of the same gene can differ through naturally occurring variations (e.g. polymorphisms), each with its own valid existence. This clone is substantially in agreement with the reference, but a complete review of all prevailing variants is recommended prior to use. [More info](#)

OTI Annotation: This clone was engineered to express the complete ORF with an expression tag. Expression varies depending on the nature of the gene.

Components: The ORF clone is ion-exchange column purified and shipped in a 2D barcoded Matrix tube containing 10ug of transfection-ready, dried plasmid DNA (reconstitute with 100 ul of water).

Reconstitution Method:

1. Centrifuge at 5,000xg for 5min.
2. Carefully open the tube and add 100ul of sterile water to dissolve the DNA.
3. Close the tube and incubate for 10 minutes at room temperature.
4. Briefly vortex the tube and then do a quick spin (less than 5000xg) to concentrate the liquid at the bottom.
5. Store the suspended plasmid at -20°C. The DNA is stable for at least one year from date of shipping when stored at -20°C.

RefSeq: [NM_178469.3](#), [NP_848564.2](#)

RefSeq Size: 918 bp

RefSeq ORF: 459 bp

Locus ID: 138307

UniProt ID: [Q6JVE9](#)

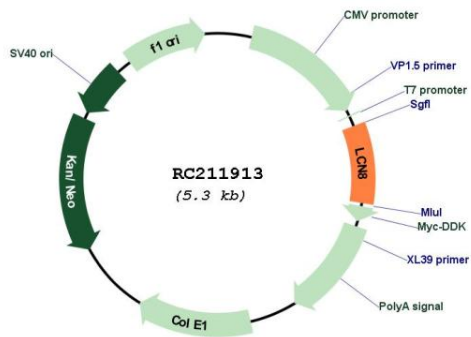
Cytogenetics: 9q34.3

Protein Families: Secreted Protein

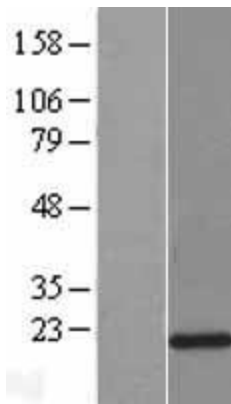
MW: 17.3 kDa

Gene Summary: Members of the lipocalin family, such as LCN8, have a common structure consisting of an 8-stranded antiparallel beta-barrel that forms a cup-shaped ligand-binding pocket or calyx. Lipocalins generally bind small hydrophobic ligands and transport them to specific cells (Suzuki et al., 2004 [PubMed 15363845]).[supplied by OMIM, Aug 2009]

Product images:



Circular map for RC211913



Western blot validation of overexpression lysate (Cat# [LY405935]) using anti-DDK antibody (Cat# [TA50011-100]). Left: Cell lysates from untransfected HEK293T cells; Right: Cell lysates from HEK293T cells transfected with RC211913 using transfection reagent MegaTran 2.0 (Cat# [TT210002]).