

Product datasheet for RC211908

PALM2AKAP2 (NM_053016) Human Tagged ORF Clone

Product data:

Product Type:	Expression Plasmids
Product Name:	PALM2AKAP2 (NM_053016) Human Tagged ORF Clone
Tag:	Myc-DDK
Symbol:	PALM2AKAP2
Synonyms:	AKAP-2; AKAP-KL; AKAP2; AKAPKL; MISP2; PALM2; PALM2-AKAP2; PRKA2
Mammalian Cell Selection:	Neomycin
Vector:	pCMV6-Entry (PS100001)
E. coli Selection:	Kanamycin (25 ug/mL)
ORF Nucleotide Sequence:	>RC211908 representing NM_053016 Red=Cloning site Blue=ORF Green=Tags(s)

TTTTGTAATACGACTCACTATAGGGCGCCGGGAATTCGTCGACTGGATCCGGTACCGAGGAGATCTGCC
GCC**CGATCGCC**

ATGGCAGAGGGGAATTGCACAAGGAAAGGCTGCAAGCCATAGCAGAAAAAGAAAGAGGCAGACTGAAA
TAGAAGGCAAGCGACAACAGCTTGACGAGCAGATACTTCTGCTGCAGCATTCCAAGTCCAAAGTGCCTTCG
GGAGAAATGGCTGCTGCAGGGCATAACCCGCTGGAAGTCCGAAGAGGAGGAAGCCAGGAGGCGGCAGTCT
GAAGAGGATGAGTTCAGAGTCAAGCAACTTGAAGATAACATTAGAGGCTGGAGCAAGAAATACAAACGC
TAGAAAGTGAAGAGTCCCAGATATCTGCCAAAGAGCAAATCATCTAGAGAACTGAAGGAAACAGAAAA
ATCCTTCAAGGACTTTCAGAAGGGTTTCTCCAGTACGGATGGAGATGCAGTAAATTACATTTCTCCAG
CTTCCCGACTGCCAATCCTCTGTTACGAACAGCAGAACCATCACCTGGGCAGGACGGGACCAGCAGAG
CGGCTGCTGTGTACGCCATGAAATTAATGTGGAGAAAGACAAACAAACAGGAGAGACCAAGATTCTCTC
TACATCTACCATTTGGCCAGAGGGGGTCCATCAGAAAGGAGTCAAAGTCTATGATGATGGTACCAAAGTA
GTGTATGAGGTGCGCTCAGGAGGCACCGTAGTAGAAAATGGAGTGCACAAATTAAGCACAAAGGATGTAG
AAGAGCTTATTCAGAAGGCTGGACAATCAAGCTTAGGAGGAGGGCACGTGTCTGAAAGGACTGTGATTGC
AGATGGGAGCCTCAGCCATCCCAAGGAACACATGCTCTGCAAAGAAGCTAAGTTAGAAATGGTACATAAG
TCTAGGAAAGACCATTTCCGGGAACCCAGGGCAGCAGGCCAACCCCGCTGCAGGGCCGGAGG
CAAATTGGATCAGCCCGTCACCATGATTTTTATGGGCTACCAAAATATCGAGGATGAAGAGGAGACGAA
AAAGGTGCTAGGCTATGATGAAACCATCAAGGCTGAATTGGTCTCATTGATGAAGATGATGAGAAGTCA
TTGAGGGAGAAGACAGTACGGACGTGTCCACTATTGACGGGAACCGGGTGTGAGCTTGTGTCCGGGAGGC
CGGTCTCAGACACCACAGAGCCCTATCCCCAGAAGGGAAGGAGAGCCTAGCTACAGAGCCAGCCCC
AGGTACCCAAAAGAAAAAGCGCTGTCAATGCTGTGTTGTCATG

ACGCGTACGCGGCCGCTCGAGCAGAACTCATCTCAGAAGAGGATCTGGCAGCAAATGATATCCTGGATT
ACAAGGATGACGACGATAAGGTTTAA



[View online >](#)

Protein Sequence: >RC211908 representing NM_053016
 Red=Cloning site Green=Tags(s)

MAEAE LHKERLQAI AEKRKRQTEIEGKRQQLDEQILLQHSKSKVLREKWL LQGIPAGTAE EEEARRRQS
 EEDEF RVKQLEDNIQRLEQEIQTLESEESQISAKEQIILEKLKETE KSFKDFQKGF SSTDGDAVNYISSQ
 LPDLPI LCSR TAEPSPGQDGT SRAAAVYAMEINVEKDKQTGETKILSTSTIGPEGVHQKGVKYDDG TKV
 VYEVRS GGTVVENG VHKLSTKDV EELIQKAGQSSLGGGHV SERTVIADGSL SHPKEHMLCKEAKLEMVHK
 SRKDHSSGNPGQAQAPSAAGPEANLDQPV TMI FMGYQNI EDEEETKKV LGYDET IKAELVLIDEDDEKS
 LREKTV DVSTIDGNA AELVSGRPVSDTTEPSSPEGKEESLATEPAPGTQKKKRCQCCVVM

TRTRPLEQKLISEEDLAANDILDYKDDDDKV

Restriction Sites:

SgfI-MluI

Cloning Scheme:

Cloning sites used for ORF Shuttling:



* The last codon before the Stop codon of the ORF

ACCN: NM_053016

ORF Size: 1233 bp

OTI Disclaimer: The molecular sequence of this clone aligns with the gene accession number as a point of reference only. However, individual transcript sequences of the same gene can differ through naturally occurring variations (e.g. polymorphisms), each with its own valid existence. This clone is substantially in agreement with the reference, but a complete review of all prevailing variants is recommended prior to use. [More info](#)

OTI Annotation: This clone was engineered to express the complete ORF with an expression tag. Expression varies depending on the nature of the gene.

Components: The ORF clone is ion-exchange column purified and shipped in a 2D barcoded Matrix tube containing 10ug of transfection-ready, dried plasmid DNA (reconstitute with 100 ul of water).

- Reconstitution Method:**
1. Centrifuge at 5,000xg for 5min.
 2. Carefully open the tube and add 100ul of sterile water to dissolve the DNA.
 3. Close the tube and incubate for 10 minutes at room temperature.
 4. Briefly vortex the tube and then do a quick spin (less than 5000xg) to concentrate the liquid at the bottom.
 5. Store the suspended plasmid at -20°C. The DNA is stable for at least one year from date of shipping when stored at -20°C.

RefSeq: [NM_053016.6](#)

RefSeq Size: 9363 bp

RefSeq ORF: 1236 bp

Locus ID: 445815

UniProt ID: [Q8IXS6](#)

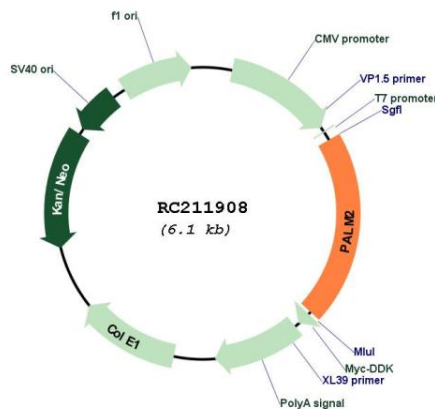
Cytogenetics: 9q31.3

Domains: Paralemmin

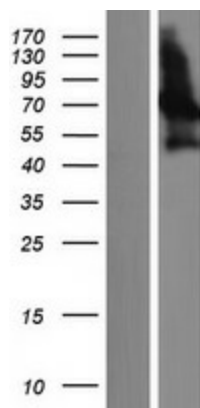
MW: 45.3 kDa

Gene Summary: This gene belongs to the paralemmin downstream gene (PDG) family defined in PMID:22855693. Paralemmin downstream genes may have evolved contiguously with the paralemmin genes and are associated with other paralemmin paralogs in humans and several other taxa. The gene encodes three distinct protein isoforms, the PALM2 isoform, the AKAP2 isoform and the PALM2-AKAP2 isoform. The biological significance of the PALM2-AKAP2 isoforms is yet unknown. Earlier, PALM2 and AKAP2 were annotated as separate genes and PALM2-AKAP2 was annotated as a readthrough gene. [provided by RefSeq, May 2019]

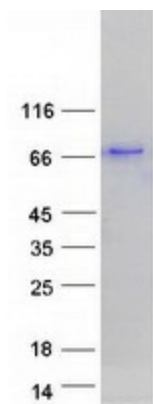
Product images:



Circular map for RC211908



Western blot validation of overexpression lysate (Cat# [LY409323]) using anti-DDK antibody (Cat# [TA50011-100]). Left: Cell lysates from untransfected HEK293T cells; Right: Cell lysates from HEK293T cells transfected with RC211908 using transfection reagent MegaTran 2.0 (Cat# [TT210002]).



Coomassie blue staining of purified PALM2-AKAP2 protein (Cat# [TP311908]). The protein was produced from HEK293T cells transfected with PALM2-AKAP2 cDNA clone (Cat# RC211908) using MegaTran 2.0 (Cat# [TT210002]).