

## Product datasheet for **RC211902**

### Integrin beta 1 (ITGB1) (NM\_033668) Human Tagged ORF Clone

#### Product data:

Product Type:	Expression Plasmids
Product Name:	Integrin beta 1 (ITGB1) (NM_033668) Human Tagged ORF Clone
Tag:	Myc-DDK
Symbol:	Integrin beta 1
Synonyms:	CD29; FNRB; GPIIA; MDF2; MSK12; VLA-BETA; VLAB
Mammalian Cell Selection:	Neomycin
Vector:	pCMV6-Entry (PS100001)
E. coli Selection:	Kanamycin (25 ug/mL)



[View online »](#)

**ORF Nucleotide Sequence:**

>RC211902 representing NM\_033668  
 Red=Cloning site Blue=ORF Green=Tags(s)

TTTTGTAATACGACTCACTATAGGGCGGCCGGAATTCGTCGACTGGATCCGGTACCGAGGAGATCTGCC  
 GCC**GCGATCGCC**

ATGAATTTACAACCAATTTTCTGGATTGGACTGATCAGTTCAGTTTGGCTGTGTGTTTGTCTCAAACAGATG  
 AAAATAGATGTTTAAAAGCAAATGCCAAATCATGTGGAGAATGTATACAAGCAGGGCCAAATTTGGGGTG  
 GTGCACAATTCACATTTTTACAGGAAGGAATGCCTACTTCTGCACGATGTGATGATTTAGAAGCCTTA  
 AAAAGAAGGGTTGCCCTCCAGATGACATAGAAAAATCCAGAGGCTCCAAAGATATAAAGAAAAATAAAA  
 ATGTAACCAACCGTAGCAAAGGAACAGCAGAGAAGCTCAAGCCAGAGGATATTACTCAGATCCAACCACA  
 GCAGTTGGTTTTGCGATTAAGATCAGGGGACCCACAGACATTTACATTAATCAAGAGAGCTGAAGAC  
 TATCCCATTGACCTCTACTACCTTATGGACCTGTCTTACTCAATGAAAGACGATTTGGAGAATGAAAA  
 GTCTTGGAACAGATCTGATGAATGAAATGAGGAGGATTACTTCGGAATTCAGAAATGGATTTGGCTCATT  
 TGTGAAAAGACTGTGATGCCTTACATTAGCACAAACACCAGCTAAGCTCAGGAACCCCTGCACAAGTGAA  
 CAGAACTGCACCAGCCATTTAGCTACAAAAATGTGCTCAGTCTTACTAATAAAGGAGAAGTATTTAATG  
 AACTTGTGGAAAACAGCGCATATCTGGAAATTTGGATTCCTCAGAAGGTGGTTTCGATGCCATCATGCA  
 AGTTGCAGTTTGTGGATCACTGATTGGCTGGAGGAATGTTACACGGCTGCTGGTGTTCACAGATGCC  
 GGGTTTCACTTTGCTGGAGATGGGAACTTGGTGGCATTGTTTTACCAATGATGGACAATGTCACCTGG  
 AAAATAATATGTACAAATGAGCCATTATTATGATTATCCTTCTATTGCTCACCTGTCCAGAACTGAG  
 TGAAAAAATATTCAGACAATTTTGCAGTTACTGAAGAATTTACGCTGTTTACAAGGAGCTGAAAAAC  
 TTGATCCCTAAGTCAGCAGTAGGAACATTATCTGCAAATCTAGCAATGTAATTCAGTTGATCATTGATG  
 CATACAATTCCTTTCCAGAAAGTCAATTTGGAAAACGGCAAATGTGAGAAGGCGTAACAATAAGTTA  
 CAAATCTTACTGCAAGAACGGGGTGAATGGAACAGGGGAAAAATGGAAGAAAAATGTTCCAATATTTCCATT  
 GGAGATGAGGTTCAATTTGAAATAGCATAAATCAAAATAAGTGTCCAAAAAAGGATTCTGACAGCTTTA  
 AAATTAGGCTCTGGCTTTACGGAGGAAGTAGAGTTATTCTTCACTACATCTGTGAATGTGAATGCCA  
 AAGCGAAGGCATCCCTGAAAGTCCCAAGTGTGATGAAGGAAATGGGACATTTGAGTGTGGCGCGTGCAGG  
 TGCAATGAAGGGCGTGTGGTAGACATTGTGAATGCAGCACAGATGAAGTTAACAGTGAAGACATGGATG  
 CTTACTGCAGGAAAGAAAACAGTTCAGAAATCTGCAGTAAACAATGGAGAGTGCCTCTGCGGACAGTGTG  
 TTGTAGGAAGAGGATAATACAAATGAAATTTATTCTGGCAAATCTGCGAGTGTGATAATTTCACTGT  
 GATAGATCCAATGGCTTAATTTGTGGAGGAAATGGTGTGCAAGTGTCTGTGTGTGAGTGAACCCCA  
 ACTACACTGGCAGTGCATGTGACTGTTCTTTGGATACTAGTACTTGTGAAGCCAGCAACGGACAGATCTG  
 CAATGGCCGGGGCATCTGCGAGTGTGGTGTCTGTAAGTGTACAGATCCGAAGTTTCAAGGGCAAACGTGT  
 GAGATGTGTCAGACCTGCCTTGGTGTCTGTGCTGAGCATAAAGAAATGTGTTCAAGTGCAGAGCCTTCAATA  
 AAGGAGAAAAGAAAGACACATGCACACAGGAATGTTTCTATTTAACATTACCAAGGTAGAAAGTCGGGA  
 CAAATTACCCAGCCGGTCCAACCTGATCCTGTGTCCCATTGTAAGGAGAAGGATGTTGACGACTGTTGG  
 TTCTATTTTACGTATTCAGTGAATGGGAACAACGAGGTGATGTTTCAATGTTGTTGGAGAATCCAGAGTGC  
 CCACTGGTCCAGACATCATTCCAATTGTAGCTGGTGTGGTTGCTGGAATGTTCTTATTGGCCTTGCAAT  
 ACTGCTGATGGAAGCTTTTAAATGATAATTCATGACAGAAGGGAGTTTGCTAAATTTGAAAAGGAGAAA  
 ATGAATGCCAAATGGGACACGCAAGAAAAATCCGATTTACAAGAGTCTATTAATAATTTCAAGAAATCCAA  
 ACTACGGACGTAAGCTGGTCTC

**ACGCGT**ACGCGGCCGCTCGAGCAGAACTCATCTCAGAAGAGGATCTGGCAGCAAATGATATCCTGGATT  
 ACAAGGATGACGACGATAAGGTTTAA

**Protein Sequence:** >RC211902 representing NM\_033668  
Red=Cloning site Green=Tags(s)

MNLQPIFWIGLISSVCCVFAQTDENRCLKANAKSCGECIQAGPNCGWCTNSTFLQEGMPTSARCDLLEAL  
KKKGCPPDDIENPRGSKDIKKNKNVTNRSKGTAEKLPEDITQIQPQQLVLRRLRSGEPQFTFLKFKRAED  
YPIDLYLMDLSYSMKDDLENVKSLGTDLMNEMRRITSDFRIGFGSFVEKTVMPYISTTPAKLRNPCTSE  
QNCTSPFSYKNVLSLTNKGEVFNELVGKQRI SGNLDSPEGGFDAIMQVAVCGSLIGWRNVTRLLVFSTDA  
GFHFAGDGKLGGI VLPNDGQCHLENNMYTMSHYDYPSIAHLVQKLENNIQTIFAVTEEFQPVYKELKN  
LIPKSAVGTL SANSSNVIQLIIDAYNSLSSEVILENGKLESGVTISYKSYCKNGVNGTGENGRKCSNISI  
GDEVQFEISITSNKCPKKDSDFKIRPLGFTEEVEVILQYICECECQSEGIPESPKCHEGNGTFECGACR  
CNEGRVGRHCECSTDEVNSEMDAYCRKENSSEICSNNGECVCGQCVCRKRDNTNEIYSGKFCECDNFNC  
DRSNGLICGGNGVCKCRVCECPNYTGSACDCSLDTSTCEASNGQICNGRGI CECGVCKCTDPKFQGQTC  
EMCQTCLGVCAEHKECVQCRAFNGKEKDTCTQEC SYFNITKVESRDKLPQVPQDPVSHCKEKDVDDCW  
FYFTYSVNGNNEVMHVVENPECP TGPDIIPVAGVVAGIVLIGLALLLIWKL LMI IHDRREFAKFEKEK  
MNAKWD TQENPIYKSPINNFKNPNYGRKAGL

TRTRPLEQKLI SEEDLAANDILDYKDDDDKV

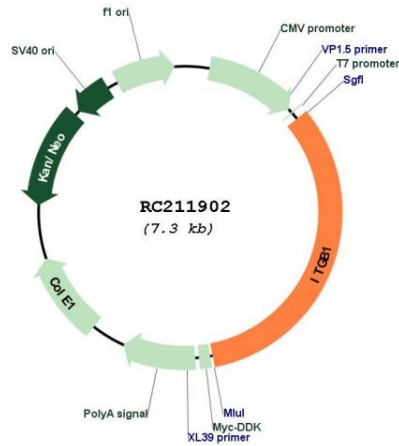
**Chromatograms:** [https://cdn.origene.com/chromatograms/mg3010\\_f01.zip](https://cdn.origene.com/chromatograms/mg3010_f01.zip)

**Restriction Sites:** Sgfl-Mlul

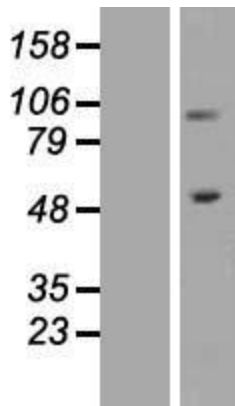


<b>Reconstitution Method:</b>	<ol style="list-style-type: none"><li>1. Centrifuge at 5,000xg for 5min.</li><li>2. Carefully open the tube and add 100ul of sterile water to dissolve the DNA.</li><li>3. Close the tube and incubate for 10 minutes at room temperature.</li><li>4. Briefly vortex the tube and then do a quick spin (less than 5000xg) to concentrate the liquid at the bottom.</li><li>5. Store the suspended plasmid at -20°C. The DNA is stable for at least one year from date of shipping when stored at -20°C.</li></ol>
<b>RefSeq:</b>	<a href="#">NM_033668.2</a> , <a href="#">NP_391988.1</a>
<b>RefSeq Size:</b>	2481 bp
<b>RefSeq ORF:</b>	2406 bp
<b>Locus ID:</b>	3688
<b>UniProt ID:</b>	<a href="#">P05556</a>
<b>Cytogenetics:</b>	10p11.22
<b>Protein Families:</b>	Druggable Genome, ES Cell Differentiation/IPS, Transmembrane
<b>Protein Pathways:</b>	Arrhythmogenic right ventricular cardiomyopathy (ARVC), Axon guidance, Cell adhesion molecules (CAMs), Dilated cardiomyopathy, ECM-receptor interaction, Focal adhesion, Hypertrophic cardiomyopathy (HCM), Leukocyte transendothelial migration, Pathogenic Escherichia coli infection, Pathways in cancer, Regulation of actin cytoskeleton, Small cell lung cancer
<b>MW:</b>	86.6 kDa
<b>Gene Summary:</b>	Integrins are heterodimeric proteins made up of alpha and beta subunits. At least 18 alpha and 8 beta subunits have been described in mammals. Integrin family members are membrane receptors involved in cell adhesion and recognition in a variety of processes including embryogenesis, hemostasis, tissue repair, immune response and metastatic diffusion of tumor cells. This gene encodes a beta subunit. Multiple alternatively spliced transcript variants which encode different protein isoforms have been found for this gene. [provided by RefSeq, Jul 2008]

Product images:



Circular map for RC211902



Western blot validation of overexpression lysate (Cat# [LY409466]) using anti-DDK antibody (Cat# [TA50011-100]). Left: Cell lysates from untransfected HEK293T cells; Right: Cell lysates from HEK293T cells transfected with RC211902 using transfection reagent MegaTran 2.0 (Cat# [TT210002]).