

## Product datasheet for **RC211893L4V**

### PKC alpha (PRKCA) (NM\_002737) Human Tagged ORF Clone Lentiviral Particle

#### Product data:

Product Type:	Lentiviral Particles
Product Name:	PKC alpha (PRKCA) (NM_002737) Human Tagged ORF Clone Lentiviral Particle
Symbol:	PKC alpha
Synonyms:	AAG6; PKC-alpha; PKCA; PKCalpha; PKCI+/-; PRKACA
Mammalian Cell Selection:	Puromycin
Vector:	pLenti-C-mGFP-P2A-Puro (PS100093)
Tag:	mGFP
ACCN:	NM_002737
ORF Size:	2016 bp
ORF Nucleotide Sequence:	The ORF insert of this clone is exactly the same as(RC211893).
OTI Disclaimer:	The molecular sequence of this clone aligns with the gene accession number as a point of reference only. However, individual transcript sequences of the same gene can differ through naturally occurring variations (e.g. polymorphisms), each with its own valid existence. This clone is substantially in agreement with the reference, but a complete review of all prevailing variants is recommended prior to use. <a href="#">More info</a>
OTI Annotation:	This clone was engineered to express the complete ORF with an expression tag. Expression varies depending on the nature of the gene.
RefSeq:	<a href="#">NM_002737.2</a> , <a href="#">NP_002728.1</a>
RefSeq Size:	8787 bp
RefSeq ORF:	2019 bp
Locus ID:	5578
UniProt ID:	<a href="#">P17252</a>
Cytogenetics:	17q24.2
Domains:	C2, pkinase, S_TK_X, TyrKc, DAG_PE-bind, S_TKc
Protein Families:	Druggable Genome, ES Cell Differentiation/IPS, Protein Kinase



[View online »](#)

**Protein Pathways:**

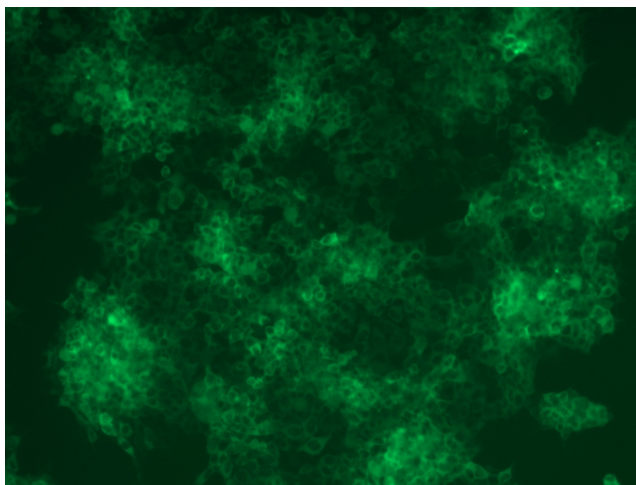
Calcium signaling pathway, ErbB signaling pathway, Fc epsilon RI signaling pathway, Fc gamma R-mediated phagocytosis, Focal adhesion, Gap junction, Glioma, GnRH signaling pathway, Leukocyte transendothelial migration, Long-term depression, Long-term potentiation, MAPK signaling pathway, Melanogenesis, Natural killer cell mediated cytotoxicity, Non-small cell lung cancer, Pathogenic Escherichia coli infection, Pathways in cancer, Phosphatidylinositol signaling system, Tight junction, Vascular smooth muscle contraction, VEGF signaling pathway, Vibrio cholerae infection, Wnt signaling pathway

**MW:**

76.6 kDa

**Gene Summary:**

Protein kinase C (PKC) is a family of serine- and threonine-specific protein kinases that can be activated by calcium and the second messenger diacylglycerol. PKC family members phosphorylate a wide variety of protein targets and are known to be involved in diverse cellular signaling pathways. PKC family members also serve as major receptors for phorbol esters, a class of tumor promoters. Each member of the PKC family has a specific expression profile and is believed to play a distinct role in cells. The protein encoded by this gene is one of the PKC family members. This kinase has been reported to play roles in many different cellular processes, such as cell adhesion, cell transformation, cell cycle checkpoint, and cell volume control. Knockout studies in mice suggest that this kinase may be a fundamental regulator of cardiac contractility and Ca(2+) handling in myocytes. [provided by RefSeq, Jul 2008]

**Product images:**

[RC211893L4] was used to prepare Lentiviral particles using [TR30037] packaging kit. HEK293T cells were transduced with RC211893L4V particle to overexpress human PRKCA-mGFP fusion protein.