

## Product datasheet for RC211887

### ANKRD42 (NM\_182603) Human Tagged ORF Clone

#### Product data:

Product Type:	Expression Plasmids
Product Name:	ANKRD42 (NM_182603) Human Tagged ORF Clone
Tag:	Myc-DDK
Symbol:	ANKRD42
Synonyms:	PPP1R79; SARP
Mammalian Cell Selection:	Neomycin
Vector:	pCMV6-Entry (PS100001)
E. coli Selection:	Kanamycin (25 ug/mL)
ORF Nucleotide Sequence:	>RC211887 representing NM_182603 Red=Cloning site Blue=ORF Green=Tags(s)

TTTTGTAATACGACTCACTATAGGGCGGCCGGAATTCGTCGACTGGATCCGGTACCGAGGAGATCTGCC  
GCC**CGATCGCC**

ATGCCCGGGTGGCCAATTCAGGCCCTCCACTTCTCTAGGGAGACTGCAAACCCCTGTTCCAGGAAGA  
AGGTGCATTTTGGCAGCATACATGATGCAGTACGAGCTGGAGATGTAAGCAGCTTTCAGAAATAGTGTG  
TCTTCATTGGCTGCTCTGGCATGGAGCTGATATCACACACGTAACAACGAGAGGTTGGACAGCATCTCAC  
ATAGCTGCAATCAGGGTCCAGGATGCTTGTGTACAGGCTTTATAATGAATGGAGCAAATCTGACAGCCC  
AGGATGACCGGGGATGCACTCCTTTACATCTTGTGCAACTCATGGACATTCTTTCACTTACAAAATAAT  
GCTCCGAAGTGGAGTGGATCCCAGTGTGACTGATAAGAGAGAATGGAGACCTGTGCATTATGCAGCTTTT  
CATGGGCGGCTTGGCTGCTTGAACCTTCTGTTAAATGGGGTGTAGCATAGAAGATGTGGACTACAATG  
GAAACCTTCCAGTTCCTTAGCAGCCATGGAAGGCCACCTTCACTGTTTTCAAATCCTAGTCAGTAGAAT  
GAGCAGTGCAGCAAGTTTTAAAAGCTTTCAATGATAATGGAGAAAATGTACTGGATTTGGCCAGAGG  
TTCTTCAAGCAGAACATTTTACAGTTTATCCAGGGGCTGAGTATGAAGGAAAAGACCTAGAGGATCAGG  
AACTTTAGCATTTCCAGGTCATGTGGCTGCCTTAAAGGTGATTTGGGGATGCTAAGAAATAGTGGA  
AGATGGAGTAATCAATATTAATGAGCGTGTGATAATGGATCAACTCCTATGCATAAAGCTGCTGGACAA  
GGCCACATAGAGTGTTCAGTGGTTAATTAATGGAGCAGACAGTAATATTACCAACAAAGCAGGGG  
AGAGACCCAGTGTGTGGCAAAGAGGTTTGCCCATTTGGCAGCAGTGAAGCTGTTAGAGGAGCTACAGAA  
ATATGATATAGATGACGAAAATGAAATGATGAAAATGATGTGAAATATTTTATAAGACATGGTGTGAG  
GGAAGCACTGATGCCAAGGATGATTTATGTCTGAGTGACTTGGATAAACAGATGCCAGAAGACCATCAA  
AGAAGTGCAGGGCCAGCTGGAGTATGAACGACTACGTAGAGAAAAAT

**ACGCGT**ACGGGCGGCTCGAGCAGAACTCATCTCAGAAGAGGATCTGGCAGCAAATGATATCCTGGATT  
ACAAGGATGACGACGATAAGGTTTAA



[View online >](#)

**Protein Sequence:** >RC211887 representing NM\_182603  
Red=Cloning site Green=Tags(s)

MPGVANS GPSTSSRETANPCSRKKVHFGSIHDAVRAGDVKQLSEIVCLHWLLWHGADITHVTTTRGWTASH  
 IAAIRGQDACVQALIMNGANLTAQDDRGCTPLHLAATHGHSFTLQIMLRSGVDPSVTDKREWRPVHYAAF  
 HGRLGCLQLLVKWGCSIEDVDYNGNLPVHLAAMEGHLHCFKFLVSRMSSATQVLKAFNDNGENVLDAQR  
 FFKQNILQFIQGAIEYEGKDLQETLAFPGHVAAFKGDLGMLKKLVEDGVININERADNGSTPMHKAAGQ  
 GHIECLQWLKMGADSNITNKAGERPSDVAKRF AHLAAVKLLEELQKYDIDENEIDENDVKYFIRHGVE  
 GSTDAKDDLCLSDLDKTDARRPSKNCRASWSMNDYVEKN

TRTRPLEQKLISEEDLAANDILDYKDDDDKV

**Chromatograms:** [https://cdn.origene.com/chromatograms/mk8025\\_b05.zip](https://cdn.origene.com/chromatograms/mk8025_b05.zip)

**Restriction Sites:** SgfI-MluI

**Cloning Scheme:**



\* The last codon before the Stop codon of the ORF

**ACCN:** NM\_182603

**ORF Size:** 1167 bp

**OTI Disclaimer:** The molecular sequence of this clone aligns with the gene accession number as a point of reference only. However, individual transcript sequences of the same gene can differ through naturally occurring variations (e.g. polymorphisms), each with its own valid existence. This clone is substantially in agreement with the reference, but a complete review of all prevailing variants is recommended prior to use. [More info](#)

**OTI Annotation:** This clone was engineered to express the complete ORF with an expression tag. Expression varies depending on the nature of the gene.

**Components:** The ORF clone is ion-exchange column purified and shipped in a 2D barcoded Matrix tube containing 10ug of transfection-ready, dried plasmid DNA (reconstitute with 100 ul of water).

**Reconstitution Method:**

1. Centrifuge at 5,000xg for 5min.
2. Carefully open the tube and add 100ul of sterile water to dissolve the DNA.
3. Close the tube and incubate for 10 minutes at room temperature.
4. Briefly vortex the tube and then do a quick spin (less than 5000xg) to concentrate the liquid at the bottom.
5. Store the suspended plasmid at -20°C. The DNA is stable for at least one year from date of shipping when stored at -20°C.

**RefSeq:** [NM\\_182603.4](#)

**RefSeq Size:** 2293 bp

**RefSeq ORF:** 1170 bp

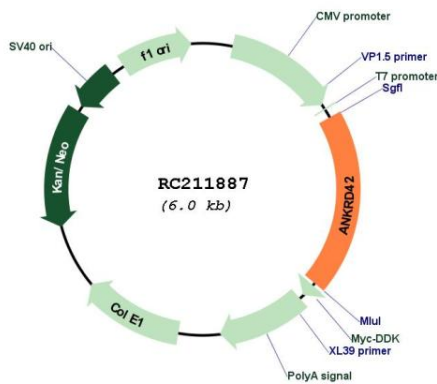
**Locus ID:** 338699

**UniProt ID:** [Q8N9B4](#)

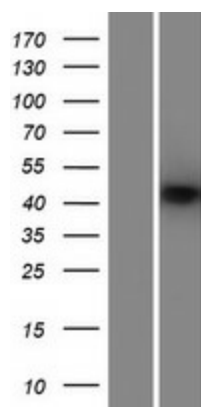
**Cytogenetics:** 11q14.1

**MW:** 42.9 kDa

**Product images:**



Circular map for RC211887



Western blot validation of overexpression lysate (Cat# [LY405336]) using anti-DDK antibody (Cat# [TA50011-100]). Left: Cell lysates from untransfected HEK293T cells; Right: Cell lysates from HEK293T cells transfected with RC211887 using transfection reagent MegaTran 2.0 (Cat# [TT210002]).