

Product datasheet for **RC211886**

Rho GTPase activating protein 24 (ARHGAP24) (NM_001042669) Human Tagged ORF Clone

Product data:

Product Type:	Expression Plasmids
Product Name:	Rho GTPase activating protein 24 (ARHGAP24) (NM_001042669) Human Tagged ORF Clone
Tag:	Myc-DDK
Symbol:	Rho GTPase activating protein 24
Synonyms:	FILGAP; p73; p73RhoGAP; RC-GAP72; RCGAP72
Mammalian Cell Selection:	Neomycin
Vector:	pCMV6-Entry (PS100001)
E. coli Selection:	Kanamycin (25 ug/mL)



[View online »](#)

ORF Nucleotide Sequence:

>RC211886 representing NM_001042669
 Red=Cloning site Blue=ORF Green=Tags(s)

TTTTGTAATACGACTCACTATAGGGCGGCCGGGAATTCGTCGACTGGATCCGGTACCGAGGAGATCTGCC
 GCC**CGGATCGCC**

ATGACAGCAAATCATGAAAGCTACCTCCTCATGGCAAGCACCCAGAATGATATGGAAGACTGGGTGAAGT
 CAATCCGCCGAGTCATATGGGGACCTTTTCGGAGGAGGCATTTTTGGACAGAACTGGAGGATACTGTTCG
 TTATGAGAAGAGATATGGGAACCGTCTGGCTCCGATGTTGGTGGAGCAGTGCGTGGACTTTATCCGACAA
 AGGGGGCTGAAAGAAGAGGGTCTCTTCGACTGCCAGGCCAGGCTAATCTTGTTAAGGAGCTCCAAGATG
 CCTTTGACTGTGGGGAGAAGCCATCATTGACAGCAACACAGATGTACACACGGTGGCATCACTTCTTAA
 GCTGTACCTCCGAGAACTCCAGAACCAGTTATTCCTTATGCGAAGTATGAAGATTTTTGTGTCATGTGCC
 AAAGTCTCAGCAAGGAAGGAAGCAGGTGTTAAGGAATTAGCAAAGCAGGTGAAGAGTTTCCAGTGG
 TAAATTACAACCTCCTCAAGTATATTTGCAGATCTTGGATGAAGTACAGTCTACTCGGGAGTTAACAA
 AATGAGTGTGCAACTTGGCAACGGTCTTTGGTCTAATATCCTGCGCCCCAAAGTGAAGATCCTTTG
 ACTATCATGGAGGGCACTGTGGTGGTCCAGCAGTTGATGTCAGTATGATTAGCAAACATGATTGCCTCT
 TTCCCAAAGATGCAGAACTACAAAGCAAGCCCCAAGATGGAGTGAGCAACAACAATGAAATTCAGAAGAA
 AGCCACCATGGGGCAGTTACAGAACAAGGAGAACAATAACACCAAGGACAGCCCTAGTAGGCAGTGTCC
 TGGGACAAGTCTGAGTCACCCCAGAGAAGCAGCATGAACAATGGATCCCCACAGCTCTATCAGGCAGCA
 AAACCAACAGCCCCAAGAACAGTGTTCACAAGCTAGATGTGTCTAGAAGCCCCCTCTCATGGTCAAAAA
 GAACCCAGCCTTAATAAGGGTAGTGGGATAGTTACCAATGGGTCCTTCAGCAGCAGTAAATGCAGAAGGT
 CTTGAGAAAACCCAAACACCCCAATGGGAGCCTACAGGCCAGAAGGAGCTCTTCACTGAAGGTATCTG
 GTACCAAAATGGGCACGCACAGTGTACAGAATGGAACGGTGCATGGGCATTTTGAACAGCGCACACT
 CGGGAACCCACAAATGTTGAAACATGAGCTGGCTGCCAAATGGCTATGTGACCCTGAGGGATAACAAG
 CAGAAAGAACAAGCTGGAGAGTTAGGCCAGCACACAGACTGTCCACCTATGATAATGTCCATCAACAGT
 TCTCCATGATGAACCTTGATGACAAGCAGAGCATTGACAGTGTACCTGGTCCACTTCTCCTGTGAAAT
 CTCCCTCCCTGAGAACTCCAACCTCTGTGCTCTTCTACCACCCTGCCAGAGCAAGACTTTTTTTGGG
 GGGAACTTTGAGGACCCTGTTTTGGATGGGCCCCCGCAGGACGACCTTTCCACCCAGGGACTATGAAA
 GCAAAAGTGACCACAGGAGTGTGGGAGGTCGAAGTAGTCGTGCCACCAGTAGCAGTGACAACAGTGAGAC
 ATTTGTGGCAACAGCAGCAGCAACCACAGTGCCTGCACAGTTAGTTTCCAGCCTGAAACAGGAAATG
 ACCAAACAGAAGATAGAGTATGAGTCCAGGATAAAGAGCTTAGAACAGCGAAACTTGACTTTGGAACAG
 AAATGATGAGCCTCCATGATGAACTGGATCAGGAGAGGAAAAAGTTCACAATGATAGAAATAAAAAATGCG
 AAATGCCGAGCGAGCAAAAGAAGATGCCGAGAAAAGAAATGACATGCTACAGAAAAGAAATGGAGCAGTT
 TTTTCCACGTTTGGAGAAGTACAGTGGAAACCCAGGAGAACCCAGAGAGGAAACACAATATGGATTACAG

ACGCGTACGCGGCCGCTCGAGCAGAAACTCATCTCAGAAGAGGATCTGGCAGCAATGATATCCTGGATT
 ACAAGGATGACGACGATAAGGTTTAA

Reconstitution Method:

1. Centrifuge at 5,000xg for 5min.
2. Carefully open the tube and add 100ul of sterile water to dissolve the DNA.
3. Close the tube and incubate for 10 minutes at room temperature.
4. Briefly vortex the tube and then do a quick spin (less than 5000xg) to concentrate the liquid at the bottom.
5. Store the suspended plasmid at -20°C. The DNA is stable for at least one year from date of shipping when stored at -20°C.

RefSeq: [NM_001042669.2](#)

RefSeq Size: 4195 bp

RefSeq ORF: 1962 bp

Locus ID: 83478

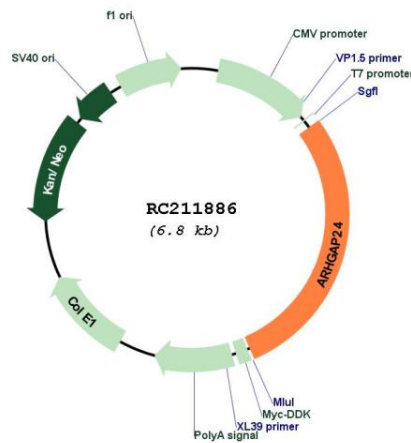
UniProt ID: [Q8N264](#)

Cytogenetics: 4q21.23-q21.3

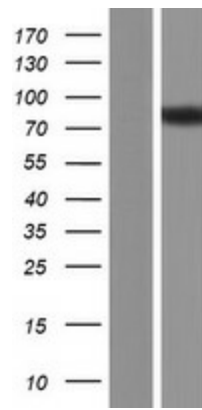
MW: 73.1 kDa

Gene Summary: This gene encodes a Rho-GTPase activating protein, which is specific for the small GTPase family member Rac. Binding of the encoded protein by filamin A targets it to sites of membrane protrusion, where it antagonizes Rac. This results in suppression of lamellae formation and promotion of retraction to regulate cell polarity. Alternative splicing results in multiple transcript variants. [provided by RefSeq, Sep 2016]

Product images:



Circular map for RC211886



Western blot validation of overexpression lysate (Cat# [LY421018]) using anti-DDK antibody (Cat# [TA50011-100]). Left: Cell lysates from untransfected HEK293T cells; Right: Cell lysates from HEK293T cells transfected with RC211886 using transfection reagent MegaTran 2.0 (Cat# [TT210002]).