

## Product datasheet for **RC211884**

### **MKS1 (NM\_017777) Human Tagged ORF Clone**

#### **Product data:**

Product Type:	Expression Plasmids
Product Name:	MKS1 (NM_017777) Human Tagged ORF Clone
Tag:	Myc-DDK
Symbol:	MKS1
Synonyms:	BBS13; JBTS28; MES; MKS; POC12
Mammalian Cell Selection:	Neomycin
Vector:	pCMV6-Entry (PS100001)
E. coli Selection:	Kanamycin (25 ug/mL)



[View online »](#)

**ORF Nucleotide Sequence:**

>RC211884 representing NM\_017777  
 Red=Cloning site Blue=ORF Green=Tags(s)

TTTTGTAATACGACTCACTATAGGGCGGCCGGAATTCGTCGACTGGATCCGGTACCGAGGAGATCTGCC  
 GCC**GCGATCGCC**

ATGGCGGAGACCGTCTGGAGCACTGACACCGGGGAGGCAGTGTATCGCTCCCGGGACCCCGTGCCTCAACT  
 TGCCTCCGAGTCCACCTGCAAAGAATCACATCAAGCAACTTTCTTATTATCAGCCTGCTGCCGAGCT  
 CGGAAGGACCTCATAGACTTGGCCACTTTTAGGCCTCAGCCAACTGCCAGTGGACACCGCCAGAGGAA  
 GACGAAGAGGAGGAGATTGTGATTGGGTGGCAGGAGAAGCTTTAGCCAGTTTGAAGTAGATCTGTACC  
 AAAATGAAACAGCCTGTCAAGTCTTTGGATTACAGTACCGTCAAGGATCCTGAAGCTGGAGAATTC  
 GGGTGGCAAGAAAACCGACGAATCTTTACCTACACTGACTCTGATAGATACACCAATTTGGAGGAGCAC  
 TGTCAAGAAATGACCACTGCAGCCAGCGAGGTGCCTTCATTCTTGGTGGAGCGAATGGCAAATGTCAGGC  
 GTCGCCCGCAGGACAGGCGAGGGATGGAGGGCGGCATCCTCAAGTACGCATCGTCACTGGGAGCCCTC  
 AGAAGAGTTTGTCAAGAAACACCGTCAATTAACACCCCTCTTCAAGACAATGCACATCATGGCAGACCTG  
 GGGCCCTATAAAAAGCTTGGCTATAAGAAGTATGAACATGTCCTGTACTCTGAAGGTGGATAGCAATG  
 GTGTGATCACAGTAAAGCCTGACTTACCGGCCTCAAAGGACCTACAGGATTGAGACGGAGGGGGAGAA  
 GCAGGAGCTGTGAAATATACGATCGACAATGTTCCCCACGCACAGCCGAGGAGGAGGAGCGGGAA  
 CGCGAGTGTCAAGGATCTTTATGGCCGGCACAAGGAGTATCTCAGCAGCCTCGTAGGCACCGACTTTG  
 AGATGACTGTCCAGGTGCCCTCCGGCTCTTTGTAATGGAGAGGTGCTTTCAGCCCAAGGCTATGAGTA  
 TGACAATCTCTACGTCCACTTCTTTGTAGAATTGCCAACTGCTCACTGGTCAAGCCAGCATTCCAGCAG  
 CTCTCAGGAGTAACACAGACCTGCACCACCAAGTCCCTGGCAATGGACAAGGTGGCTCACTTCTCCTACC  
 CATTCAAGTTTGAAGCCTTCTTCTCCATGAGGATGAATCTTCTGATGCACTCCCGAGTGGCTGTGCT  
 CTACTGTGAGGTCTCTCGCTGGACTTCTGGCAGAGGTACCGTGTGGAAGGCTATGGGGCTGTGGTGTG  
 CCTGCCACTCCAGGCTCACACACCTGACAGTCTCCACGTGGAGACCTGTGGAGCTTGGCAGGTGGCTG  
 AGCTGAGGAGTTTTTTCATTGGCGTTCTCTGGAAGTGGAGACCTCTCCTATGTACGGATACCAGGATC  
 CTTCAAGGGGAACGCCTGAGCCGCTTTGGACTCCGCACAGAGACCACAGGCACTGTACCTTCCGCTTG  
 CACTGTCTGCAGCAGTCCAGGCCTTATGGAATCGAGTCCCTTCAAGAAAGGATGCGGAGTGTGTTGG  
 ACCGTCTGGAAGGTTTCAAGCAGAGTTCATTACAATGTGCTAGAGGCCTCCGTCGAGCCCGGCC  
 CCGCATGCAGGAGGCCGGAAAGCCTCCCGCAGGACCTAGTGAGCCCTCTGGAACCTGGTCTCC

**ACGCGT**ACGCGGCCGCTCGAGCAGAAACTCATCTCAGAAGAGGATCTGGCAGCAAATGATATCCTGGATT  
 ACAAGGATGACGACGATAAGGTTTAA

**Protein Sequence:**

>RC211884 representing NM\_017777  
 Red=Cloning site Green=Tags(s)

MAETVWSTDTGEAVYRSRDPVRNLRVHLQRITSSNFLHYQPAELGKDLIDLATFRPQPTASGHRPEE  
 DEEEEIIVGWQEKLSQFEVDLYQNETACQSPLDYQYRQEILKLENSGGKKNRRIFTYTDSDRYTNLEEH  
 CQRMTTAASEVPSFLVERMANVRRRRQDRRGMEGGILKSRIVTWEPSEEFVRNNHVINTPLQTMHIMADL  
 GPYKGLGYKKEYEHLCTLKVDSNGVITVKPDFGLKGPYRIETEGETELWQYKIDNVSPHAQPEEEERE  
 RRVFKDLYGRHKEYLSSLVGTDFEMTVPALRLFVNGEVVSAQGYEYDNLVYHFFVELPTAHWSSPAFQQ  
 LSGVTQTCTTKSLAMDKVAHFSYPFTFEAFFLHEDESSDALPEWPVLYCEVLSLDFWQRYRVEGYGAVVL  
 PATPGSHTLTVSTWRPVELGTVAELRRFFIGGSLELEDLSYVRIPGSFKGERLSRFGLRTETTGTVTFRL  
 HCLQQSRAFMESSLQKRMRSVLDRLLEGFSQSSIHNVLEAFRRARRRMQEAESLPQDLVSPSGTLVS

**TR**TRPLEQKLISEEDLAANDILDYKDDDDKV

**Chromatograms:**

[https://cdn.origene.com/chromatograms/mk6485\\_d07.zip](https://cdn.origene.com/chromatograms/mk6485_d07.zip)

**Restriction Sites:**

Sgfl-Mlul

**Cloning Scheme:**

**ACCN:** NM\_017777

**ORF Size:** 1677 bp

**OTI Disclaimer:** The molecular sequence of this clone aligns with the gene accession number as a point of reference only. However, individual transcript sequences of the same gene can differ through naturally occurring variations (e.g. polymorphisms), each with its own valid existence. This clone is substantially in agreement with the reference, but a complete review of all prevailing variants is recommended prior to use. [More info](#)

**OTI Annotation:** This clone was engineered to express the complete ORF with an expression tag. Expression varies depending on the nature of the gene.

**Components:** The ORF clone is ion-exchange column purified and shipped in a 2D barcoded Matrix tube containing 10ug of transfection-ready, dried plasmid DNA (reconstitute with 100 ul of water).

- Reconstitution Method:**
1. Centrifuge at 5,000xg for 5min.
  2. Carefully open the tube and add 100ul of sterile water to dissolve the DNA.
  3. Close the tube and incubate for 10 minutes at room temperature.
  4. Briefly vortex the tube and then do a quick spin (less than 5000xg) to concentrate the liquid at the bottom.
  5. Store the suspended plasmid at -20°C. The DNA is stable for at least one year from date of shipping when stored at -20°C.

**RefSeq:** [NM\\_017777.4](#)
**RefSeq Size:** 2402 bp

**RefSeq ORF:** 1680 bp

**Locus ID:** 54903

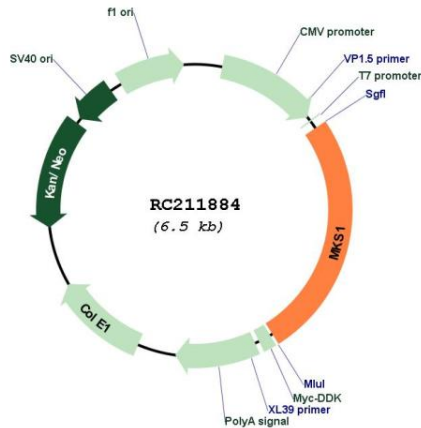
**UniProt ID:** [Q9NXB0](#)

**Cytogenetics:** 17q22

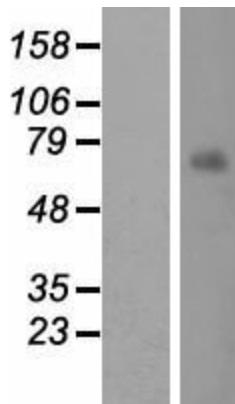
**MW:** 64.3 kDa

**Gene Summary:** The protein encoded by this gene localizes to the basal body and is required for formation of the primary cilium in ciliated epithelial cells. Mutations in this gene result in Meckel syndrome type 1 and in Bardet-Biedl syndrome type 13. Multiple transcript variants encoding different isoforms have been found for this gene. [provided by RefSeq, Sep 2009]

**Product images:**



Circular map for RC211884



Western blot validation of overexpression lysate (Cat# [LY413550]) using anti-DDK antibody (Cat# [TA50011-100]). Left: Cell lysates from untransfected HEK293T cells; Right: Cell lysates from HEK293T cells transfected with RC211884 using transfection reagent MegaTran 2.0 (Cat# [TT210002]).