

Product datasheet for RC211881

CAB39L (NM_001079670) Human Tagged ORF Clone

Product data:

Product Type:	Expression Plasmids
Product Name:	CAB39L (NM_001079670) Human Tagged ORF Clone
Tag:	Myc-DDK
Symbol:	CAB39L
Synonyms:	bA103J18.3; MO2L; MO25-BETA
Mammalian Cell Selection:	Neomycin
Vector:	pCMV6-Entry (PS100001)
E. coli Selection:	Kanamycin (25 ug/mL)
ORF Nucleotide Sequence:	>RC211881 ORF sequence Red=Cloning site Blue=ORF Green=Tags(s)

TTTTGTAATACGACTCACTATAGGGCGGCCGGAATTCGTCGACTGGATCCGGTACCGAGGAGATCTGCC
GCC**CGATCGCC**

ATGAAAAAATGCCTTTGTTTAGTAAATCACACAAAAATCCAGCAGAAATTGTGAAAATCCTGAAAGACA
ATTTGGCCATTTTGAAAAGCAAGACAAAAAGACAGACAAGGCTTCAGAAGAAGTGTCTAAATCACTGCA
AGCAATGAAAGAAATCTGTGTGGTACAAACGAGAAAGAACCCCGACAGAAGCAGTGGCTCAGCTAGCA
CAAGAACTCTACAGCAGTGGCCTGCTGGTGACACTGATAGCTGACCTGCAGCTGATAGACTTTGAGGAAA
AAAAAGATGTGACCCAGATATTTAAACAACATCTTGAGAAGACAGATAGGCACTCGGAGTCTACTGTGGA
GTATATTAGTGCTCATCCTCATATCCTGTTTATGCTCCTCAAAGGATATGAAGCCCCACAGATTGCCTTA
CGTTGTGGGATTATGCTGAGAGAATGTATTCGACATGAACCACTTGCCAAAATCATCCTCTTTTCTAATC
AATTGAGAGATTTCTTTAAGTACGTGGAGTTGTCAACATTTGATATTGCTTCAGATGCCTTTGCTACTTT
CAAGGATTTACTAACCAGACATAAAGTGTGGTAGCAGACTTCTTAGAACAAAAATACGACACTATTTTT
GAAGACTATGAGAAATGCTTCAGTCTGAGAATTATGTTACTAAGAGACAGTCTTTAAAGCTGCTAGGGG
AGCTGATCCTGGACCGTCACAACCTTTGCCATCATGACAAAGTATATCAGCAAGCCGGAGAACCTGAAACT
CATGATGAACCTCCTTCGGGATAAAAAGTCCCAACATCCAGTTTGAAGCCTTTCATGTTTTAAGGTGTT
GTGGCCAGTCTCACAAAACACAGCCTATTGTGGAGATCCTGTTAAAAAATCAGCCAAACTCATTGAGT
TTCTGAGCAGCTTCCAAAAGAAAAGGACGGATGATGAGCAGTTCGCTGACGAGAAGAACTACTTGATTAA
ACAGATCCGAGACTTGAAGAAAACGGCCCT

ACGCGTACGCGGCCGCTCGAGCAGAAACTCATCTCAGAAGAGGATCTGGCAGCAAATGATATCCTGGATT
ACAAGGATGACGACGATAAGGTTTAA



[View online »](#)

Protein Sequence: >RC211881 protein sequence
Red=Cloning site Green=Tags(s)

MKKMPLFSKSHKNPAEIVKILKDNLAILEKQDKKTDKASEEVSKSLQAMKEILCGTNEKEPTEAVAQLA
 QELYSSGLLVTLIADLQLIDFEEKDVTQIFNNILRRQIGTRSPTVEYISAHPHILFMLLKGYEAPQIAL
 RCGIMLRECIRHEPLAKIILFSNQFRDFFKYVELSTFDIASDAFATFKDLLTRHKVLVADFLQNYDTIF
 EDYEKLLQSENYVTKRQSLKLLGELILDRHNFAIMTKYISKPENLKLMMNLLRDKSPNIQFEAFHVFKVF
 VASPHKTQPIVEILLKNQPKLIEFLSSFQKERTDDEQFADEKNYLKQIRDLKKTAP

TRTRPLEQKLISEEDLAANDILDYKDDDDKV

Chromatograms: https://cdn.origene.com/chromatograms/mk6424_a02.zip

Restriction Sites: SgfI-MluI

Cloning Scheme:



ACCN: NM_001079670

ORF Size: 1011 bp

OTI Disclaimer: The molecular sequence of this clone aligns with the gene accession number as a point of reference only. However, individual transcript sequences of the same gene can differ through naturally occurring variations (e.g. polymorphisms), each with its own valid existence. This clone is substantially in agreement with the reference, but a complete review of all prevailing variants is recommended prior to use. [More info](#)

OTI Annotation: This clone was engineered to express the complete ORF with an expression tag. Expression varies depending on the nature of the gene.

Components: The ORF clone is ion-exchange column purified and shipped in a 2D barcoded Matrix tube containing 10ug of transfection-ready, dried plasmid DNA (reconstitute with 100 ul of water).

Reconstitution Method:

1. Centrifuge at 5,000xg for 5min.
2. Carefully open the tube and add 100ul of sterile water to dissolve the DNA.
3. Close the tube and incubate for 10 minutes at room temperature.
4. Briefly vortex the tube and then do a quick spin (less than 5000xg) to concentrate the liquid at the bottom.
5. Store the suspended plasmid at -20°C. The DNA is stable for at least one year from date of shipping when stored at -20°C.

RefSeq: [NM_001079670.3](#)

RefSeq Size: 3580 bp

RefSeq ORF: 1014 bp

Locus ID: 81617

UniProt ID: [Q9H9S4](#)

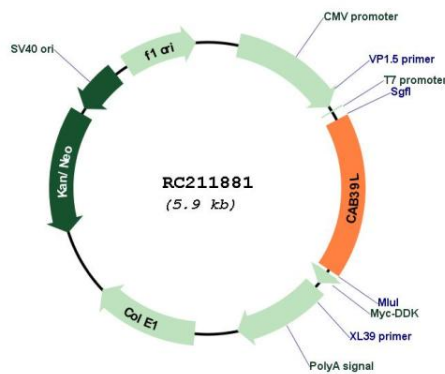
Cytogenetics: 13q14.2

Protein Pathways: mTOR signaling pathway

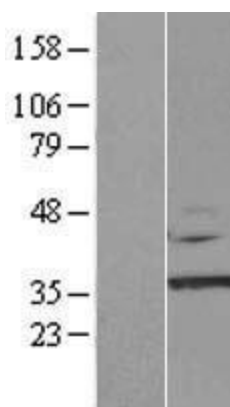
MW: 39.2 kDa

Gene Summary: Component of a complex that binds and activates STK11/LKB1. In the complex, required to stabilize the interaction between CAB39/MO25 (CAB39/MO25alpha or CAB39L/MO25beta) and STK11/LKB1 (By similarity).[UniProtKB/Swiss-Prot Function]

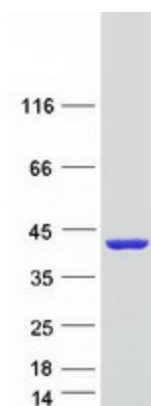
Product images:



Circular map for RC211881



Western blot validation of overexpression lysate (Cat# [LY421532]) using anti-DDK antibody (Cat# [TA50011-100]). Left: Cell lysates from untransfected HEK293T cells; Right: Cell lysates from HEK293T cells transfected with RC211881 using transfection reagent MegaTran 2.0 (Cat# [TT210002]).



Coomassie blue staining of purified CAB39L protein (Cat# [TP311881]). The protein was produced from HEK293T cells transfected with CAB39L cDNA clone (Cat# RC211881) using MegaTran 2.0 (Cat# [TT210002]).