

## Product datasheet for **RC211878**

### **c Rel (REL) (NM\_002908) Human Tagged ORF Clone**

#### **Product data:**

Product Type:	Expression Plasmids
Product Name:	c Rel (REL) (NM_002908) Human Tagged ORF Clone
Tag:	Myc-DDK
Symbol:	c Rel
Synonyms:	C-Rel; HIVEN86A
Mammalian Cell Selection:	Neomycin
Vector:	pCMV6-Entry (PS100001)
E. coli Selection:	Kanamycin (25 ug/mL)



[View online »](#)

**ORF Nucleotide Sequence:**

>RC211878 representing NM\_002908  
 Red=Cloning site Blue=ORF Green=Tags(s)

TTTTGTAATACGACTCACTATAGGGCGGCCGGAATTCGTCGACTGGATCCGGTACCGAGGAGATCTGCC  
 GCCCGCATCGCC

ATGGCCTCCGGTGCATATAACCCGTATATAGAGATAATTGAACAACCCAGGCAGAGGGGAATGCGTTTTA  
 GATACAAATGTGAAGGGGATCAGCAGGCAGCATTCCAGGGGAGCACAGCACAGACAACAACCGAACATA  
 CCCTTCTATCCAGATTATGAACTATTATGAAAAAGGAAAAGTGAGAATTACATTAGTAACAAGAATGAC  
 CCATATAAACCTCATCTCATGATTTAGTTGAAAAAGACTGCAGAGACGGCTACTATGAAGCAGAATTTG  
 GACAAGAACGCAGACCTTTGTTTTTCCAAAATTTGGGTATTCGATGTGTGAAGAAAAAGAAGTAAAGA  
 AGCTATTATTACAAGAATAAAGGCAGGAATCAATCCATTCAATGTCCCTGAAAAACAGCTGAATGATATT  
 GAAGATTGTGACCTCAATGTGGTGAAGTGTGTTTTCAAGTTTTCTCCCTGATGAACATGGTAATTTGA  
 CGACTGCTTTCCTCCTGTTGTCTGAACCAATTTATGACAACCGTGTCCAAACTGCAGAATTAAG  
 GATTTGTCGTGTAACAAGAATTGTGGAAGTGTGAGAGGAGATGAAATATTTCTACTTTGTGACAAA  
 GTTCAGAAAGATGACATAGAAGTTCGTTTTGTGTTGAACGATTGGGAAGCAAAAGGCATCTTTTCACAAG  
 CTGATGTACACCGTCAAGTAGCCATTGTTTTCAAACTCCACCATTGCAAAGCTATCACAGAACCCGT  
 AACAGTAAAAATGCAGTTGCGGAGACCTTCTGACCAGGAAGTTAGTGAATCTATGGATTTAGATATCTG  
 CCAGATGAAAAAGATACTTACGGCAATAAAGCAAAAGAAAAGACAACCTCTGCTTTTCCAGAACTGT  
 GCCAGGATCACGTAGAAACAGGGTTTCGCCATGTTGACCAGGATGGTCTTGAACCTCTGACATCAGGTGA  
 TCCACCCACCTTGGCCTCCCAAAGTGTGGGATTACAGTTAATTTCTGAGAGACCAAGACCTGGTCTC  
 CTCGGTTCAATTGGAGAAGGAAGATACTCAAAAAAGAACCAACTTGTCTCATGATGCAGTTGTGA  
 GAGAAATGCCTACAGGGTTTCAAGTCAAGCAGAATCCTACTATCCCTCACCTGGGCCCATCTCAAGTGG  
 ATTGTACATCATGCCTCAATGGCACCTCTGCCTTCTTCAAGCTGGTATCAGTGGCCACCCACCCCA  
 CGCTCAGGCAATACAAACCCACTGAGTAGTTTTTCAACAAGGACACTTCTTCTAATTGCAAGGTATCC  
 CACCATTCTGAGAACTCCTGTTGGGAATGATTTAAATGCTTCTAATGCTTGCATTTACAACAATGCCGA  
 TGACATAGTCGGAATGGAAGCGTCATCCATGCCATCAGCAGATTTATATGGTATTTCTGATCCCAACATG  
 CTGTCTAATTGTTCTGTGAATATGATGACAACCAGCAGTACAGCATGGGAGAGACTGATAATCCAAGAC  
 TTCTGAGCATGAATCTTAAAACCCCTCATGTAATTCAGTGTAGACCAAGAGACTTGAGACAGCTCCA  
 TCAGATGTCTCTCCAGTATGTCAGCAGGCGCAATTCAACTACTGTTTTTTGTTTCAATCAGAT  
 GCATTTGAGGGATCTGACTTCAGTTGTGCAGATAACAGCATGATAAATGAGTCGGGACCATCAAACAGTA  
 CTAAATCAAACAGTCATGGTTTTGTTCAAGATAGTCAGTATTCAGGTATTGGCAGTATGCAAATGAGCA  
 ATTGAGTGACTCCTTTCATATGAATTTTTTCAAGTA

ACGCGTACGCGGCCGCTCGAGCAGAACTCATCTCAGAAGAGGATCTGGCAGCAATGATATCCTGGATT  
 ACAAGGATGACGACGATAAGGTTTAA

**Protein Sequence:**

>RC211878 representing NM\_002908  
 Red=Cloning site Green=Tags(s)

MASGAYNPYIEIEIQQPRQRGMFRYKCEGRSAGSIPGEHSTDNNRTPYSIQIMNYGKGVKITLVTKND  
 PYKPHPHDLVGKDCRDGYEAEFGQERRPLFFQNLGIRCVKKEVKEAIIIRIKAGINPFPVPEKQLNDI  
 EDCDLNVVRLCFQVFLPDEHGNLTALPPVVSNIYDNRAPNTAELRICRVNKNCGSVRGGDEIFLLCDK  
 VQKDDIEVRFVLNDWEAKGIFSQADVHRQVAIVFKTPPYCKAITEPVTVKMLRRPSDQEVSESMDFRYL  
 PDEKDTYGNKAKKQKTTLLFQKLCQDHVETGFRHVDQDGLLELLTSGDPPTLASQSAGITVNFPERPRPGL  
 LGSIGEGRYFKKEPNLFSHDAVVREMPGVSSQAESYSPGPISSGLSHHASMPLPSSWSSVAHPTP  
 RSGNTNPLSSFSTRTPSNSQGI PPFLRIPVGNLNASNACIYNNADDIVGMEASSMPSADLYGISDPNM  
 LSNCSVNMMTSSDSMGETDNPRLLSMNLNENPSCNSVLDPRDLRQLHQMSSSSMSAGANSNTTVFVSQSD  
 AFEQSDFCADNSMINEGSPNSNTPNSHGFVQDSQYSIGSMQNEQLSDSFPYEFFQV

TRTRPLEQKLISEEDLAANDILDYKDDDDKV

Chromatograms: [https://cdn.origene.com/chromatograms/mk8103\\_d03.zip](https://cdn.origene.com/chromatograms/mk8103_d03.zip)  
 Restriction Sites: SgfI-MluI  
 Cloning Scheme:



ACCN: NM\_002908

ORF Size: 1857 bp

OTI Disclaimer: The molecular sequence of this clone aligns with the gene accession number as a point of reference only. However, individual transcript sequences of the same gene can differ through naturally occurring variations (e.g. polymorphisms), each with its own valid existence. This clone is substantially in agreement with the reference, but a complete review of all prevailing variants is recommended prior to use. [More info](#)

OTI Annotation: This clone was engineered to express the complete ORF with an expression tag. Expression varies depending on the nature of the gene.

Components: The ORF clone is ion-exchange column purified and shipped in a 2D barcoded Matrix tube containing 10ug of transfection-ready, dried plasmid DNA (reconstitute with 100 ul of water).

- Reconstitution Method:
1. Centrifuge at 5,000xg for 5min.
  2. Carefully open the tube and add 100ul of sterile water to dissolve the DNA.
  3. Close the tube and incubate for 10 minutes at room temperature.
  4. Briefly vortex the tube and then do a quick spin (less than 5000xg) to concentrate the liquid at the bottom.
  5. Store the suspended plasmid at -20°C. The DNA is stable for at least one year from date of shipping when stored at -20°C.

RefSeq: [NM\\_002908.4](#)

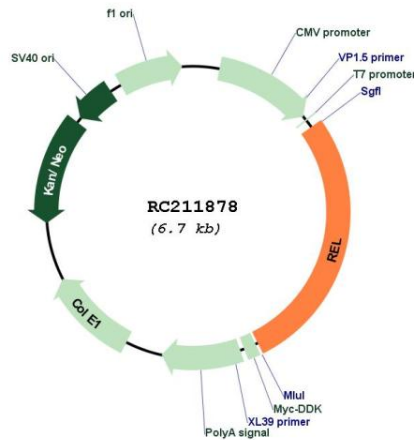
RefSeq Size: 2592 bp

RefSeq ORF: 1860 bp

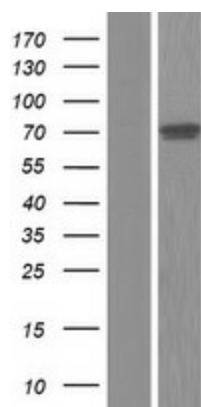
**Locus ID:** 5966  
**UniProt ID:** [Q04864](#)  
**Cytogenetics:** 2p16.1  
**Domains:** RHD, IPT  
**Protein Families:** Druggable Genome, Transcription Factors  
**MW:** 68.5 kDa

**Gene Summary:** This gene encodes a protein that belongs to the Rel homology domain/immunoglobulin-like fold, plexin, transcription factor (RHD/IPT) family. Members of this family regulate genes involved in apoptosis, inflammation, the immune response, and oncogenic processes. This proto-oncogene plays a role in the survival and proliferation of B lymphocytes. Mutation or amplification of this gene is associated with B-cell lymphomas, including Hodgkin's lymphoma. Single nucleotide polymorphisms in this gene are associated with susceptibility to ulcerative colitis and rheumatoid arthritis. Alternative splicing results in multiple transcript variants encoding different isoforms. [provided by RefSeq, Apr 2014]

**Product images:**



Circular map for RC211878



Western blot validation of overexpression lysate (Cat# [LY419012]) using anti-DDK antibody (Cat# [TA50011-100]). Left: Cell lysates from untransfected HEK293T cells; Right: Cell lysates from HEK293T cells transfected with RC211878 using transfection reagent MegaTran 2.0 (Cat# [TT210002]).