

## Product datasheet for **RC211875**

### Clusterin (CLU) (NM\_001831) Human Tagged ORF Clone

#### Product data:

Product Type:	Expression Plasmids
Product Name:	Clusterin (CLU) (NM_001831) Human Tagged ORF Clone
Tag:	Myc-DDK
Symbol:	Clusterin
Synonyms:	AAG4; APO-J; APOJ; CLI; CLU1; CLU2; KUB1; NA1/NA2; SGP-2; SGP2; SP-40; TRPM-2; TRPM2
Mammalian Cell Selection:	Neomycin
Vector:	pCMV6-Entry (PS100001)
E. coli Selection:	Kanamycin (25 ug/mL)



[View online »](#)

**ORF Nucleotide Sequence:**

>RC211875 representing NM\_001831  
 Red=Cloning site Blue=ORF Green=Tags(s)

TTTTGTAATACGACTCACTATAGGGCGGCCGGAATTCGTCGACTGGATCCGGTACCGAGGAGATCTGCC  
 GCC**CGGATCGCC**

ATGCAGGTTTGCAGCCAGCCCCAAGGGGGTGTGTGCGGAGCAGAGCGTATAAATACGGCGCCTCCCA  
 GTGCCACAACCGGGCGTCGCCAGGAGGAGCGCGGGCACAGGGTGCCGCTGACCGAGGCGTGCAAAGA  
 CTCAGAAATTGGAGGCATGATGAAGACTCTGCTGCTGTTTGTGGGGCTGCTGCTGACCTGGGAGAGTGGG  
 CAGGTCCTGGGGGACCAGACGGTCTCAGACAATGAGCTCCAGGAAATGTCCAATCAGGGAAGTAAGTACG  
 TCAATAAGGAAATTCAAATGCTGTCAACGGGGTAAAACAGATAAAGACTCTCATAGAAAAACAAACGA  
 AGAGCGCAAGACACTGCTCAGCAACCTAGAAGAAGCCAAGAAGAAGAAAGAGGATGCCCTAAATGAGACC  
 AGGGAATCAGAGACAAAGCTGAAGGAGCTCCAGGAGTGTCAATGAGACCATGATGGCCCTCTGGGAAG  
 AGTGTAAAGCCCTGCCTGAAACAGACCTGCATGAAGTTCTACGCACGCGTCTGCAGAAGTGGCTCAGGCC  
 GGTGGCCGCGCAGCTTGAGGAGTTCCTGAACCAGAGCTCGCCCTTCTACTTCTGGATGAATGGTGACCGC  
 ATCGACTCCCTGCTGGAGAACGACCGGCAGCAGACGCACATGCTGGATGTCATGCAGGACCACTTACGCC  
 GCGCGTCCAGCATCATAGACGAGCTCTCCAGGACAGGTTCTTACCCCGGAGGCCCAAGGATACCTACCA  
 CTACCTGCCCTTACGCTGCCACCGGAGGCCTCACTTCTTCTTCCCAAGTCCCGCATCGTCCGACG  
 TTGATGCCCTTCTCCTGACGAGCCCTGAACCTCCACGCCATGTTCCAGCCCTTCTTGGATGATAC  
 ACGAGGCTCAGCAGGCCATGGACATCCACTTCCATAGCCCGCCCTCCAGCACCCGCCAACAGAATTCAT  
 ACGAGAAGGCGACGATGACCGGACTGTGTGCCGGGAGATCCGCCACAACCTCCAGGGCTGCCTGCGGATG  
 AAGGACCAAGTGACAAGTGCCGGGAGATCTTGTCTGTGGACTGTTCCACCAACAACCCCTCCAGGCTA  
 AGCTGCGGCGGGAGCTCGACGAATCCCTCAGGTCGCTGAGAGGTTGACCAGGAAATACAACGAGCTGCT  
 AAAGTCTACCAGTGGAAGATGCTCAACACCTCCTCCTTGTGGAGCAGCTGAACGAGCAGTAACTGG  
 GTGTCCCGGCTGGCAAACCTCACGAAGGCGAAGACCAAGTACTATCTGCGGGTACCACGGTGGCTTCCC  
 ACACCTTCTGACTCGGACGTTCTTCCGGTGTCACTGAGGTGGTGTGAAGCTCTTGGACTGATCCCAT  
 CACTGTGACGGTCCCTGTAGAAGTCTCCAGGAAGAACCCTAAATTTATGGAGACCGTGGCGGAGAAAGCG  
 CTGCAGGAATACCGCAAAAAGCACCGGGAGGAG

AG**CGGACCG**ACGCGTACGCGGCCGCTCGAGCAGAAACTCATCTCAGAAGAGGATCTGGCAGCAAATGATATCC  
 TGGATTACAAGGATGACGACGATAAGGTTTAA

**Protein Sequence:**

>RC211875 representing NM\_001831  
 Red=Cloning site Green=Tags(s)

MQVCSQPQRGCVREQSAINTAPPSAHNAASPGGARGHRVPLTEACKDSRIGGMMKTLFLVGLLLTWESG  
 QVLGDQTVSDNELQEMSNQGSKYVNKEIQNAVNGVKQIKTLIEKTNEERKTLNLEEAKKKKEDALNET  
 RESETKLKELPGVCNETMMALWEECKPCLKQTCMKFYARVCRSGSLVGRQLEEFLNQSSPFYFWMNGDR  
 IDSLENDRQQTHMLDVMQDHFSTRASSIIDELFQDRFFREPQDTYHYLPFSLPHRRPHFFPKSRIVRS  
 LMPFSPYEPLNFHAMFQPFLEMIHEAQQAMDIFHSPAFQHPPTTEFIREGDDRTVCREIRHNSTGCLRM  
 KDQCDKCREILSVDCSTNNPSQAKLRRELDLQVAERLTRKYNELLKSYQWMLNTSSLLEQLNEQFNW  
 VSRLANLTQGEDQYLRVTTVASHTSDSDVPSGVTEVVVKLFSDPITVTVPVEVSRKNPKFMETVAEKA  
 LQEYRKKHREE

SGP**TRRRLEQKLI**SEEDLAANDILDYKDDDDK**V**

**Chromatograms:**

[https://cdn.origene.com/chromatograms/mg3743\\_h09.zip](https://cdn.origene.com/chromatograms/mg3743_h09.zip)

**Restriction Sites:**

Sgfl-RsrII

**Cloning Scheme:**


**ACCN:** NM\_001831

**ORF Size:** 1503 bp

**OTI Disclaimer:** The molecular sequence of this clone aligns with the gene accession number as a point of reference only. However, individual transcript sequences of the same gene can differ through naturally occurring variations (e.g. polymorphisms), each with its own valid existence. This clone is substantially in agreement with the reference, but a complete review of all prevailing variants is recommended prior to use. [More info](#)

**OTI Annotation:** This clone was engineered to express the complete ORF with an expression tag. Expression varies depending on the nature of the gene.

**Components:** The ORF clone is ion-exchange column purified and shipped in a 2D barcoded Matrix tube containing 10ug of transfection-ready, dried plasmid DNA (reconstitute with 100 ul of water).

- Reconstitution Method:**
1. Centrifuge at 5,000xg for 5min.
  2. Carefully open the tube and add 100ul of sterile water to dissolve the DNA.
  3. Close the tube and incubate for 10 minutes at room temperature.
  4. Briefly vortex the tube and then do a quick spin (less than 5000xg) to concentrate the liquid at the bottom.
  5. Store the suspended plasmid at -20°C. The DNA is stable for at least one year from date of shipping when stored at -20°C.

**Note:** Plasmids are not sterile. For experiments where strict sterility is required, filtration with 0.22um filter is required.

**RefSeq:** [NM\\_001831.2](#), [NP\\_001822.2](#)

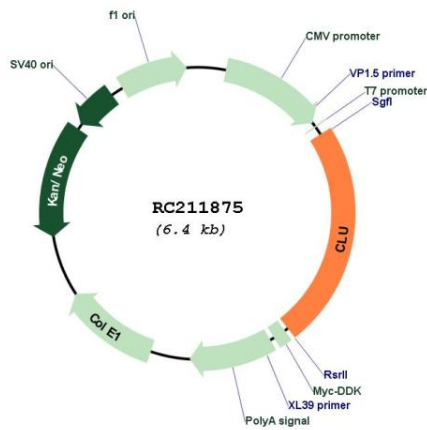
**RefSeq Size:** 2859 bp

**RefSeq ORF:** 1350 bp

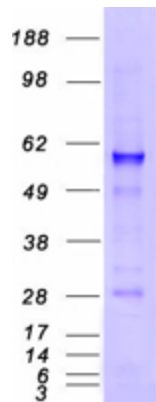
**Locus ID:** 1191

**UniProt ID:** [P10909](#)  
**Cytogenetics:** 8p21.1  
**Domains:** CLa  
**Protein Families:** Druggable Genome, Secreted Protein  
**MW:** 57.7 kDa  
**Gene Summary:** The protein encoded by this gene is a secreted chaperone that can under some stress conditions also be found in the cell cytosol. It has been suggested to be involved in several basic biological events such as cell death, tumor progression, and neurodegenerative disorders. Alternate splicing results in both coding and non-coding variants.[provided by RefSeq, May 2011]

**Product images:**



Circular map for RC211875



Coomassie blue staining of purified CLU protein (Cat# [TP311875]). The protein was produced from HEK293T cells transfected with CLU cDNA clone (Cat# RC211875) using MegaTran 2.0 (Cat# [TT210002]).