

Product datasheet for RC211870

TCTE3 (NM_174910) Human Tagged ORF Clone

Product data:

Product Type: Expression Plasmids
Product Name: TCTE3 (NM_174910) Human Tagged ORF Clone
Tag: Myc-DDK
Symbol: TCTE3
Synonyms: TCTEX1D3
Vector: pCMV6-Entry (PS100001)
E. coli Selection: Kanamycin (25 ug/mL)
Cell Selection: Neomycin
ORF Nucleotide Sequence: >RC211870 ORF sequence
Red=Cloning site Blue=ORF Green=Tags(s)

TTTTGTAATACGACTCACTATAGGGCGCCGGAATTCGTCGACTGGATCCGGTACCGAGGAGATCTGCC
GCC**CGATCGCC**

ATGGAGAAGCGAGGCCGAGGCGTGAAGTCGAGCCCATCCAGACCCGAACCAGACCCCTCAGCAGGCTC
CGGTGACGCCCTAGGAAAGAAAGGAGGCCCTAGCATGTTTCGAGAAGGAGGCATATACACAGATTTTAAGAGA
AAGACTGAGAGAGTCAATTCACAATGTTTCAGTATGTGGAGCCTCCTTTTGATGACTCAATTGCTGATATA
GGTAAAGAATGGAAGAGTGCCCTGGCAAATTAAGTTTGCTAATTCATATAGAATGGAGCCATTGAAGA
AATCCAAGCTCATTTCAGTAGAACTAAAGTCCAGCAGATACTAACAGAAAGTCTTAAAGATGTCAAATA
TGATGATAAAGTATTCTCTCACTTGTCACTTGAATTGGCAGACCCGATACTGTTAGCAGTCAAAGAATTT
GGGTACCACCGTTATAAGTTTCATTATAAAGTATTATTTATTCAAAGACTGGCCAAGCAATAAATATTG
CCAGCAGATGGATCTGGGACATTGCATGGGACAGCTGGTTCGAGCTAAACACGAAGCAGAATCCTACGT
GGCACTGGTCTTGGTGTGGCCCTTTATTATGAA

ACGCGTACGCGGCCGCTCGAGCAGAACTCATCTCAGAAGAGGATCTGGCAGCAAATGATATCCTGGATT
ACAAGGATGACGACGATAAGGTTTAA

Protein Sequence: >RC211870 protein sequence
Red=Cloning site Green=Tags(s)

MEKRGRGVKSSPIQTPNQTPQAPVTPRKERRPSMFEKEAYTQILRERLRESIHNQVYVEPPFDDSIADI
GKEWKSALAKLKFANSYRMEPLKKFQAHSVETKVQQILTESLKDVKYDDKVFSHLSLELADRILLAVKEF
GYHRYKFIKVLFIQKTGQAINIASRWIWDIAWDSWVAAKHEAESYVALVLVFLALYYE

TRTRPLEQKLISEEDLAANDILDYKDDDDKV

Chromatograms: https://cdn.origene.com/chromatograms/mk6462_a09.zip



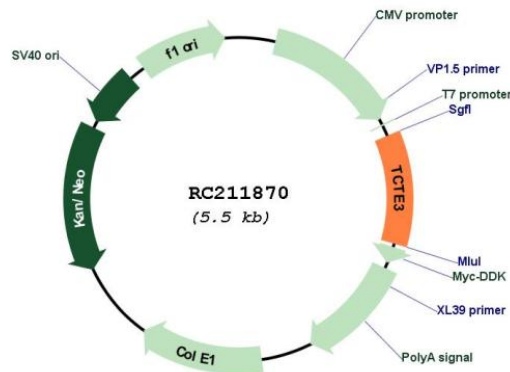
[View online »](#)

Restriction Sites: SgfI-MluI

Cloning Scheme:



Plasmid Map:



ACCN: NM_174910

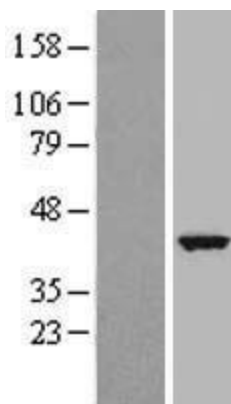
ORF Size: 594 bp

OTI Disclaimer: The molecular sequence of this clone aligns with the gene accession number as a point of reference only. However, individual transcript sequences of the same gene can differ through naturally occurring variations (e.g. polymorphisms), each with its own valid existence. This clone is substantially in agreement with the reference, but a complete review of all prevailing variants is recommended prior to use. [More info](#)

OTI Annotation: This clone was engineered to express the complete ORF with an expression tag. Expression varies depending on the nature of the gene.

RefSeq: [NM_174910.3](#)

RefSeq Size: 747 bp
RefSeq ORF: 597 bp
Locus ID: 6991
MW: 23.2 kDa

Product images:

Western blot validation of overexpression lysate (Cat# [LY406393]) using anti-DDK antibody (Cat# [TA50011-100]). Left: Cell lysates from untransfected HEK293T cells; Right: Cell lysates from HEK293T cells transfected with RC211870 using transfection reagent MegaTran 2.0 (Cat# [TT210002]).