

## Product datasheet for **RC211868**

### **RBPSUHL (RBPJL) (NM\_014276) Human Tagged ORF Clone**

#### **Product data:**

Product Type:	Expression Plasmids
Product Name:	RBPSUHL (RBPJL) (NM_014276) Human Tagged ORF Clone
Tag:	Myc-DDK
Symbol:	RBPSUHL
Synonyms:	RBPL; RBPSUHL; SUHL
Mammalian Cell Selection:	Neomycin
Vector:	pCMV6-Entry (PS100001)
E. coli Selection:	Kanamycin (25 ug/mL)



[View online »](#)

**ORF Nucleotide Sequence:**

>RC211868 representing NM\_014276  
 Red=Cloning site Blue=ORF Green=Tags(s)

TTTTGTAATACGACTCACTATAGGGCGGCCGGAATTCGTCGACTGGATCCGGTACCGAGGAGATCTGCC  
 GCC**CGCATCGCC**

ATGGACCCCGCAGGGGCAGCAGACCCTCAGTGCCTCCCAATCCTTTGACTCACCTGAGCCTGCAGGACA  
 GATCAGAGATGCAGCTGCAGAGCGAAGCCGACAGGCGGAGCCTCCCGGGCACTTGGACCAGGTATCCCC  
 AGAGCACACCACCATTCTGAGGGGAGGCGTGCGCAGGTGCTGCAGCAACAGTGTGAACAGACTGTGCGG  
 ATCCTGCATGCCAAGGTGGCCAGAAATCATACGGAAATGAGAAGCGGTTCTTCTGCCCCCGCCCTGTG  
 TCTACCTCTCGGGCCTGGCTGGAGGTGAAGCCAGGGCAGGATCAAGCTCACCAGGCGGGGAAACGGG  
 GCCACGGTCTGCGGTTACATGGGACTGGACAGCGCTCCGGCAGCGCCACTGAGACGCAGAAGCTGAAT  
 TTCGAGCAGCAGCCGACTCCAGGAATTCGGCTGCGCCAAGACCCTGTACATCTCAGATGCAGACAAGA  
 GGAAGCACTTTCGGCTGGTGTGCGGCTGGTGTGCGCGGGGGCCGGGAGCTGGTACCTCCACAGCCG  
 CCTTATCAAGGTATCTCGAAGCCCTCGCAGAAGAAGCAGTCGTAAGAACACCGATCTGTGCATATCC  
 TCCGGCTCAAAGTCTCCCTCTTCAACCGCTGCGCTCTCAGACGGTCTCCACACGCTACCTCTCTGTGG  
 AGGATGGGGCCTTTGTGGCCAGTGCACGACAGTGGGCTGCCTTACGCTCCACCTGGCTGATGGGCACTC  
 TGCCCAAGGAGACTTCCCACCGGAGAGGGCTACGTTTCGCTATGGCTCCCTGGTGCAGCTCGTCTGCACG  
 GTCACCGGCATCACACTACCTCCCATGATCATCCGTAAGTAGCAAAACAGTGTGCGCTCCTTGTATGTGG  
 ATGAGCCCATCTCCAGCTGCACAAGTGTGCAATTCAGGTTCCAGGCAGTCCCCAGGAGGGGGTGGCAC  
 CTACTTATGCCTTGCCACAGAGAAGGTGGTGAATTTCCAGGCTCTCCCTGCCCAAGGAGGCGAACAGG  
 GCTCTGCTTAACGACAGCTCTTGTGGACCATCATCGGACCCAGTCCGGTGAATTTTCTTCCAGCACA  
 GCCTGGCGTGTACCTGGAGCCGGTCACTCCGGTGCCTCTCATCAGCACCCCTAGAGCTGAGCGCGGGGG  
 CGACGTGGCCACGCTGGAGCTCCACGGAGAGAACTTCCACGCGGGCTCAAGGTGTGGTTTGGGGACGTG  
 GAGGCAGAAACCATGTACAGGAGCCCGGCTCCCTGGTGTGCGTGGTGGCGGACGTGGCGGCTTCTGCA  
 GCGACTGGCGCTGGTGCAGCTCCCATACAATCCCATGAGCCTGGTGCAGCGCCGACGGGCTTCTTA  
 CCCTAGTGCCTTCTCCTTACCTACACCCCGGAATACAGCGTGCAGCGGGTACCCCGCGCTCCCGGAG  
 CCCGCCACCGACCGGACGCGCTCTGGAGAGCATCCATCAGGAGTTCACGCGCACCACTTCCACCTCT  
 TCATCCAGACT

**ACGCGT**ACGCGGGCGCTCGAGCAGAAACTCATCTCAGAAGAGGATCTGGCAGCAAATGATATCCTGGATT  
 ACAAGGATGACGACGATAAGGTTTAA

**Protein Sequence:**

>RC211868 representing NM\_014276  
 Red=Cloning site Green=Tags(s)

MDPAGAADPSVPPNPLTHLSLQDRSEMQLQSEADRRSLPGTWTRSSPEHTTILRGGVRRCLQQQCEQTVR  
 ILHAKVAQKSYGNEKRFFCPPPCVYLSGPGWRVKGQDQAHQAGETGPTVCGYMGLDSASGSATETQKLN  
 FEQQPDSREFGCAKTLYISDADKRKHFRVLRLVLRGGRELGTFFHSRLIKVISKPSQKKQSLKNTDLCIS  
 SGSKVSLFNRLRSQTVSTRYLSVEDGAFVASARQWAAFTLHLADGHSAQGDFPPREGYVRYGSLVQLVCT  
 VTGITLPPMIIRKVAKQCALLDVDEPISQLHKCAFQFPGSPGGGGTYLCLATEKVVQFQASPCPEANR  
 ALLNDSSCWTIIIGTESVEFSFSTSLACTLEPVTPVPLISTLELGGGDVATLELHGENFHAGLKVWFGDV  
 EAETMYRSPRSLVCVVPDVAAFCSDRWLRAPITIPMSLVRADGLFYPSAFSFTYTPESVSRPGHPGVPE  
 PATDADALLESIHQEFTRTNFHLFIQT

**TRTRPLEQKLI**SEEDLAANDILDYKDDDDKV

**Chromatograms:**

[https://cdn.origene.com/chromatograms/mk6097\\_a05.zip](https://cdn.origene.com/chromatograms/mk6097_a05.zip)

**Restriction Sites:**

SgfI-MluI

**Cloning Scheme:**


**ACCN:** NM\_014276

**ORF Size:** 1551 bp

**OTI Disclaimer:** The molecular sequence of this clone aligns with the gene accession number as a point of reference only. However, individual transcript sequences of the same gene can differ through naturally occurring variations (e.g. polymorphisms), each with its own valid existence. This clone is substantially in agreement with the reference, but a complete review of all prevailing variants is recommended prior to use. [More info](#)

**OTI Annotation:** This clone was engineered to express the complete ORF with an expression tag. Expression varies depending on the nature of the gene.

**Components:** The ORF clone is ion-exchange column purified and shipped in a 2D barcoded Matrix tube containing 10ug of transfection-ready, dried plasmid DNA (reconstitute with 100 ul of water).

**Reconstitution Method:**

1. Centrifuge at 5,000xg for 5min.
2. Carefully open the tube and add 100ul of sterile water to dissolve the DNA.
3. Close the tube and incubate for 10 minutes at room temperature.
4. Briefly vortex the tube and then do a quick spin (less than 5000xg) to concentrate the liquid at the bottom.
5. Store the suspended plasmid at -20°C. The DNA is stable for at least one year from date of shipping when stored at -20°C.

**Note:** Plasmids are not sterile. For experiments where strict sterility is required, filtration with 0.22um filter is required.

**RefSeq:** [NM\\_014276.4](#)

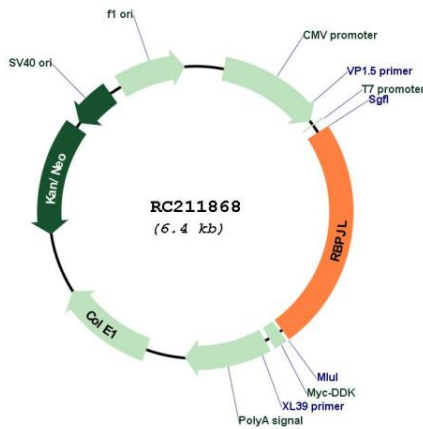
**RefSeq Size:** 2630 bp

**RefSeq ORF:** 1554 bp

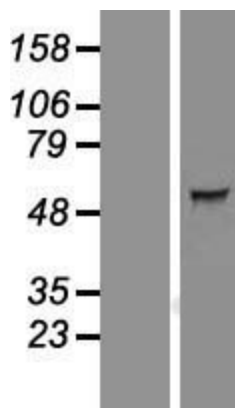
**Locus ID:** 11317

**UniProt ID:** [Q9UBG7](#)  
**Cytogenetics:** 20q13.12  
**Protein Families:** Druggable Genome, Transcription Factors  
**Protein Pathways:** Notch signaling pathway  
**MW:** 56.6 kDa  
**Gene Summary:** This gene encodes a member of the suppressor of hairless protein family. A similar protein in mouse is a transcription factor that binds to DNA sequences almost identical to that bound by the Notch receptor signaling pathway transcription factor recombining binding protein J. The mouse protein has been shown to activate transcription in concert with Epstein-Barr virus nuclear antigen-2. Alternative splicing results in multiple transcript variants. [provided by RefSeq, Jul 2013]

**Product images:**



Circular map for RC211868



Western blot validation of overexpression lysate (Cat# [LY415401]) using anti-DDK antibody (Cat# [TA50011-100]). Left: Cell lysates from untransfected HEK293T cells; Right: Cell lysates from HEK293T cells transfected with RC211868 using transfection reagent MegaTran 2.0 (Cat# [TT210002]).