

Product datasheet for **RC211858**

SRC (NM_198291) Human Tagged ORF Clone

Product data:

Product Type:	Expression Plasmids
Product Name:	SRC (NM_198291) Human Tagged ORF Clone
Tag:	Myc-DDK
Symbol:	SRC
Synonyms:	ASV; c-SRC; p60-Src; SRC1; THC6
Mammalian Cell Selection:	Neomycin
Vector:	pCMV6-Entry (PS100001)
E. coli Selection:	Kanamycin (25 ug/mL)



[View online »](#)

ORF Nucleotide Sequence:

>RC211858 representing NM_198291
 Red=Cloning site Blue=ORF Green=Tags(s)

TTTTGTAATACGACTCACTATAGGGCGGCCGGGAATTCGTCGACTGGATCCGGTACCGAGGAGATCTGCC
 GCC**CGGATCGCC**

ATGGGTAGCAACAAGAGCAAGCCCAAGGATGCCAGCCAGCGGCCGCGAGCCTGGAGCCCGCCGAGAACG
 TGCACGGCGCTGGCGGGGGCGCTTTCCCGCCTCGCAGACCCCAAGCCAGCCTCGGCCGACGCCA
 CCGCGGCCCCAGCGGGCCTTCGCCCGCGGCCGAGCCAAAGCTGTTCCGGAGGCTTCAACTCTCG
 GACACCGTCACCTCCCGCAGAGGGCGGGCCCGCTGGCCGGTGGAGTGACCACCTTTGTGGCCCTATG
 ACTATGAGTCTAGGACGGAGACAGACCTGTCTTCAAGAAAGGCGAGCGGCTCCAGATTGTCAACAACAC
 AGAGGGAGACTGGTGGCTGGCCACTCGCTCAGCACAGGACAGACAGGCTACATCCCAGCAACTACGTG
 GCGCCCTCCGACTCCATCCAGGCTGAGGAGTGGTATTTGGCAAGATCACCAGACGGGAGTCAGAGCGGT
 TACTGCTCAATGCAGAGAACCCGAGAGGGACCTTCTCGTGCAGAAAAGTGAGACCAGAAAGGTGCCTA
 CTGCCCTCAGTGTCTGACTTCGACAACGCCAAGGGCCTCAACGTGAAGCACTACAAGATCCGCAAGCTG
 GACAGCGCGGGCTTCTACATCACCTCCCGCACCCAGTTCAACAGCCTGCAGCAGCTGGTGGCCTACTACT
 CCAAACACGCCGATGGCCTGTGCCACCCGCTCACCACCGTGTGCCCCACGTCCAAGCCGACACTCAGGG
 CCTGGCCAAGGATGCCTGGGAGATCCCTCGGGAGTCCGCTGCGGCTGGAGGTCAAGCTGGGCCAGGGCTGC
 TTTGGCGAGGTGTGGATGGGGACCTGGAACGGTACCACCAGGGTGGCCATCAAAACCTGAAGCCTGGCA
 CGATGTCTCCAGAGGCCCTTCTGCAGGAGGCCAGGTCATGAAGAAGCTGAGGCATGAGAAGCTGGTGCA
 GTTGTATGCTGTGGTTTCAGAGGAGCCATTTACATCGTCACGGAGTACATGAGCAAGGGGAGTTTGCTG
 GACTTTCTCAAGGGGAGACAGGCAAGTACCTGCGGCTGCCTCAGCTGGTGGACATGGCTGCTCAGATCG
 CCTCAGGCATGGCGTACGTGGAGCGGATGAACACTCGTCCACCGGGACCTTCGTGCAGCCAACATCCTGGT
 GGGAGAGAACCTGGTGTGCAAAAGTGGCCGACTTTGGGCTGGCTCGGCTCATTGAAGACAATGAGTACACG
 GCGCGCAAGGTGCCAAATTCCCATCAAGTGGACGGCTCCAGAAGCTGCCCTCTATGGCCGCTTACCA
 TCAAGTCGGACGTGTGGTCTTCGGGATCCTGCTGACTGAGCTCACCACAAAGGGACGGGTGCCCTACCC
 TGGGATGGTGAACCGCGAGGTGCTGGACCAGGTGGAGCGGGGCTACCGGATGCCCTGCCCGCCGAGTGT
 CCCGAGTCCCTGCACGACCTCATGTGCCAGTGTGGCGGAAGGAGCCTGAGGAGCGGCCACCTTCGAGT
 ACCTGCAGGCCTTCTGGAGGACTACTTACGTCCACCGAGCCCCAGTACCAGCCGGGGAGAACCTC

ACGCGTACGCGGCCGCTCGAGCAGAAACTCATCTCAGAAGAGGATCTGGCAGCAAATGATATCCTGGATT
 ACAAGGATGACGACGATAAGGTTTAA

Protein Sequence:

>RC211858 representing NM_198291
 Red=Cloning site Green=Tags(s)

MGSNKSQPKDASQRRRSLEPAENVHAGGGAFPASQTPSKPASADGHRGPSAAFAPAAAEPKLFGGFNSS
 DTVTSPQRAGPLAGGVTFVALYDYESRTETDLSEFKGERLQIVNNTGEGDWLHSLSTGQTGYIPSNYV
 APSDSIQAEWYFGKITRRESERLLNAENPRGTFVRESETTKAYCLSVSDFDNAKGLNVKHYKIRKL
 DSGGFYITSRTQFNLSLQQLVAYYSKHADGLCHRLTTVCPTSKPQTQGLAKDAWEIPRESLRLEVKLGQGC
 FGEVWMGTWNGTTRVAIKTLKPGTMSPEAFLQEAQVMKKLRHEKLVQLYAVVSEEPYIYIVTEYMSKGSLL
 DFLKGETGKYLRPLQVDMAAQIASGMAYVERMNYVHRDLRAANILVGENLVCKVADFLARLIEDNEYT
 ARQGAKFPIKWTAPEAALYGRFTIKSDVWSFGILLTELTTKGRVPYPMVNRVLDQVERGYRMPCPPEC
 PESLHDLMCQWRKEPEERPTFEYLQAFLEDYFTSTEPQYQGENL

TRTRPLEQKLISEEDLAANDILDYKDDDDKV

Chromatograms:

https://cdn.origene.com/chromatograms/mg3411_f09.zip

Restriction Sites:

Sgfl-Mlul

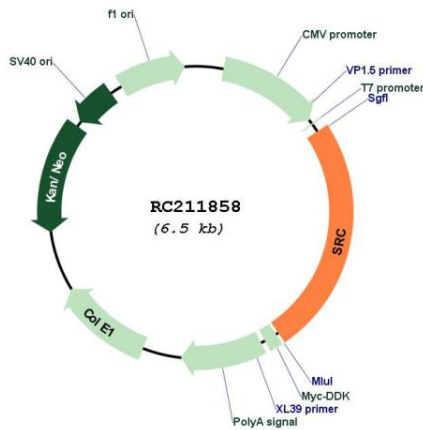
Protein Families: Druggable Genome, ES Cell Differentiation/IPS, Protein Kinase, Stem cell relevant signaling - JAK/STAT signaling pathway

Protein Pathways: Adherens junction, Endocytosis, Epithelial cell signaling in Helicobacter pylori infection, ErbB signaling pathway, Focal adhesion, Gap junction, GnRH signaling pathway, Tight junction, VEGF signaling pathway

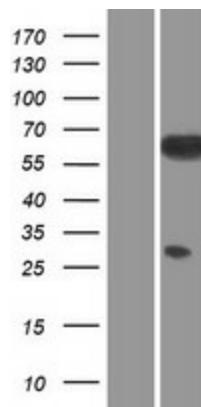
MW: 59.7 kDa

Gene Summary: This gene is highly similar to the v-src gene of Rous sarcoma virus. This proto-oncogene may play a role in the regulation of embryonic development and cell growth. The protein encoded by this gene is a tyrosine-protein kinase whose activity can be inhibited by phosphorylation by c-SRC kinase. Mutations in this gene could be involved in the malignant progression of colon cancer. Two transcript variants encoding the same protein have been found for this gene. [provided by RefSeq, Jul 2008]

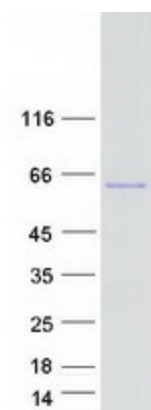
Product images:



Circular map for RC211858



Western blot validation of overexpression lysate (Cat# [LY405010]) using anti-DDK antibody (Cat# [TA50011-100]). Left: Cell lysates from untransfected HEK293T cells; Right: Cell lysates from HEK293T cells transfected with RC211858 using transfection reagent MegaTran 2.0 (Cat# [TT210002]).



Coomassie blue staining of purified SRC protein (Cat# [TP311858]). The protein was produced from HEK293T cells transfected with SRC cDNA clone (Cat# RC211858) using MegaTran 2.0 (Cat# [TT210002]).