

## Product datasheet for **RC211857**

### NEK7 (NM\_133494) Human Tagged ORF Clone

#### Product data:

Product Type:	Expression Plasmids
Product Name:	NEK7 (NM_133494) Human Tagged ORF Clone
Tag:	Myc-DDK
Symbol:	NEK7
Mammalian Cell Selection:	Neomycin
Vector:	pCMV6-Entry (PS100001)
E. coli Selection:	Kanamycin (25 ug/mL)
ORF Nucleotide Sequence:	>RC211857 representing NM_133494 Red=Cloning site Blue=ORF Green=Tags(s)

TTTTGTAATACGACTCACTATAGGGCGGCCGGGAATTCGTCGACTGGATCCGGTACCGAGGAGATCTGCC  
GCC**CGATCGCC**

ATGGATGAGCAATCACAAGGAATGCAAGGGCCACCTGTTCTCAGTTCCAACCACAGAAGGCCTTACGAC  
CGGATATGGGCTATAATACATTAGCCAACCTTCGAATAGAAAAGAAAATTGGTCGCGGACAATTTAGTGA  
AGTTTATAGAGCAGCCTGTCTCTGGATGGAGTACCAGTAGCTTTAAAAAAGTGCAGATATTTGATTTA  
ATGGATGCCAAAGCAGTGCTGATTGCATCAAAGAAATAGATCTTCTTAAGCAACTCAACCATCCAAATG  
TAATAAAATATTATGCATCATTCAATGAAGATAATGAACTAAACATAGTTTGGAACTAGCAGATGCTGG  
CGACCTATCCAGAATGATCAAGCATTTTAAGAAGCAAAGAGGCTAATTCCTGAAAGAACTGTTTGGAA  
TATTTTGTTCAGCTTTGCAGTGCATTGGAACACATGCATTCTCGAAGAGTCATGCATAGAGATATAAAAC  
CAGCTAATGTGTTCAATACAGCCACTGGGGTGGTAAAACCTGGAGATCTGGGCTTGGCCGTTTTTCAG  
CTCAAAAACCACAGCTGCACATTCTTTAGTTGGTACGCCCTATTACATGTCTCCAGAGAGAATACATGAA  
AATGGATACAACTTCAAATCTGACATCTGGTCTCTGGCTGTCTACTATATGAGATGGCTGCATTACAAA  
GTCCTTCTATGGTGACAAAATGAATTTATACTACTGTGTAAGAAGATAGAACAGTGTGACTACCCACC  
TCTTCTCAGATCACTATTCAGAAGAACTCCGACAGTTAGTTAATATGTGCATCAACCCAGATCCAGAG  
AAGCGACCAGACGTCACCTATGTTTATGACGTAGCAAAGAGGATGCATGCATGCACTGCAAGCAGC

**ACGCGT**ACGCGGCCGCTCGAGCAGAAACTCATCTCAGAAGAGGATCTGGCAGCAAATGATATCCTGGATT  
ACAAGGATGACGACGATAAGGTTTAA



[View online »](#)

**Protein Sequence:** >RC211857 representing NM\_133494  
Red=Cloning site Green=Tags(s)

MDEQSQGMQGPVPVQFQPQKALRPDMGYNTLANFRIEKKIGRQFSEVYRAACLDDGVPVALKKVQIFDL  
MDAKARADCIKEIDLLKQLNHPNVIKYYASFIEDNELNIVLELADAGDLSRMIKHFKKQRLIPERTVWK  
YFVQLCSALEHMSRRVMHRDIK PANVFITATGVVKGDLGLGRFFSSKTTAAHSLVGTPTYMSPERIHE  
NGYNFKSDIWSLGCLLYEMAALQSPFYGDKMNL YSLCKKIEQCDYPPLP SDHYSEELRQLVNMCI NPDPE  
KRPDVTVYYDVAKRMHACTASS

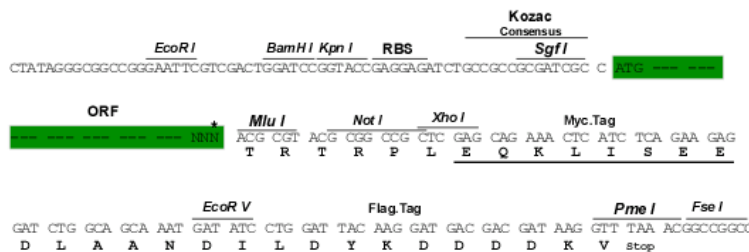
TRTRPLEQKLISEEDLAANDILDYKDDDDKV

**Chromatograms:** [https://cdn.origene.com/chromatograms/mk6104\\_c03.zip](https://cdn.origene.com/chromatograms/mk6104_c03.zip)

**Restriction Sites:** SgfI-MluI

**Cloning Scheme:**

Cloning sites used for ORF Shuttling:



\* The last codon before the Stop codon of the ORF

**ACCN:** NM\_133494

**ORF Size:** 906 bp

**OTI Disclaimer:** The molecular sequence of this clone aligns with the gene accession number as a point of reference only. However, individual transcript sequences of the same gene can differ through naturally occurring variations (e.g. polymorphisms), each with its own valid existence. This clone is substantially in agreement with the reference, but a complete review of all prevailing variants is recommended prior to use. [More info](#)

**OTI Annotation:** This clone was engineered to express the complete ORF with an expression tag. Expression varies depending on the nature of the gene.

**Components:** The ORF clone is ion-exchange column purified and shipped in a 2D barcoded Matrix tube containing 10ug of transfection-ready, dried plasmid DNA (reconstitute with 100 ul of water).

**Reconstitution Method:**

1. Centrifuge at 5,000xg for 5min.
2. Carefully open the tube and add 100ul of sterile water to dissolve the DNA.
3. Close the tube and incubate for 10 minutes at room temperature.
4. Briefly vortex the tube and then do a quick spin (less than 5000xg) to concentrate the liquid at the bottom.
5. Store the suspended plasmid at -20°C. The DNA is stable for at least one year from date of shipping when stored at -20°C.

**Note:** Plasmids are not sterile. For experiments where strict sterility is required, filtration with 0.22um filter is required.

**RefSeq:** [NM\\_133494.3](#)

**RefSeq Size:** 1072 bp

**RefSeq ORF:** 909 bp

**Locus ID:** 140609

**UniProt ID:** [Q8TDX7](#)

**Cytogenetics:** 1q31.3

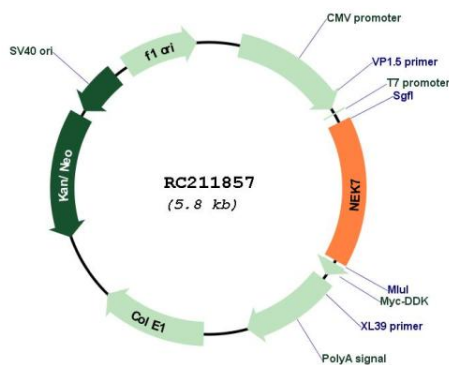
**Domains:** pkinase, TyrKc, S\_TKc

**Protein Families:** Druggable Genome, Protein Kinase

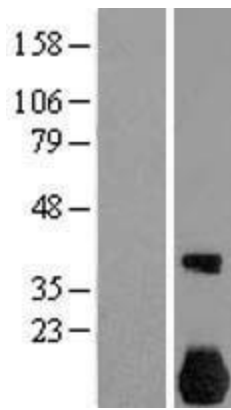
**MW:** 34.4 kDa

**Gene Summary:** NIMA-related kinases share high amino acid sequence identity with the gene product of the *Aspergillus nidulans* 'never in mitosis A' gene, which controls initiation of mitosis.[supplied by OMIM, Jul 2002]

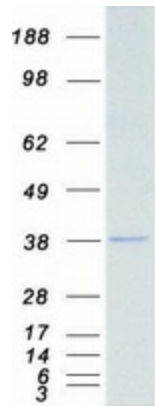
### Product images:



Circular map for RC211857



Western blot validation of overexpression lysate (Cat# [LY408824]) using anti-DDK antibody (Cat# [TA50011-100]). Left: Cell lysates from untransfected HEK293T cells; Right: Cell lysates from HEK293T cells transfected with RC211857 using transfection reagent MegaTran 2.0 (Cat# [TT210002]).



Coomassie blue staining of purified NEK7 protein (Cat# [TP311857]). The protein was produced from HEK293T cells transfected with NEK7 cDNA clone (Cat# RC211857) using MegaTran 2.0 (Cat# [TT210002]).