

## Product datasheet for **RC211855**

### **GAS2L1 (NM\_152236) Human Tagged ORF Clone**

#### **Product data:**

Product Type:	Expression Plasmids
Product Name:	GAS2L1 (NM_152236) Human Tagged ORF Clone
Tag:	Myc-DDK
Symbol:	GAS2L1
Synonyms:	GAR22
Mammalian Cell Selection:	Neomycin
Vector:	pCMV6-Entry (PS100001)
E. coli Selection:	Kanamycin (25 ug/mL)



[View online »](#)

**ORF Nucleotide Sequence:**

>RC211855 ORF sequence  
 Red=Cloning site Blue=ORF Green=Tags(s)

TTTTGTAATACGACTCACTATAGGGCGGCCGGAATTCGTCGACTGGATCCGGTACCGAGGAGATCTGCC  
 GCC**CGGATCGCC**

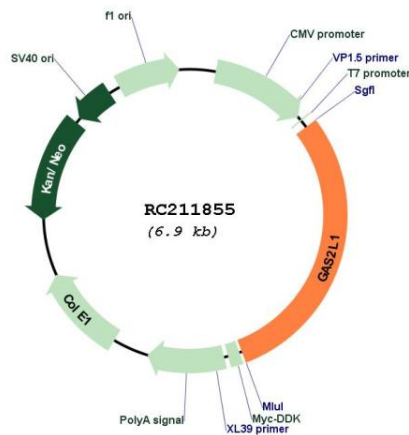
ATGGCAGACCCAGTGGCGGGCATCGCGGTTTCGGCGGCCAAGAGCGTGCGGCCATTTTCGCTCCAGTGAGG  
 CCTACGTGGAGGCCATGAAGGAGGACCTGGCCGAGTGGCTCAATGCCTTGTACGGCTGGGTCTCCCGGG  
 TGGTGGCGATGGCTTCTGACAGGGCTGGCCACGGGCACGACCCGTGTCACCAATGCCAACGCCGTGACC  
 GAGGCTGCCCGTGCATTGGCAGCCGCCCGCCGCGCCGAGGTGTGGCTTCCAGGCGCACAGTGTAGTGC  
 CTGGCTCCTTCATGGCGCGGACAACGTGGCCACCTTCATCGGCTGGTGGCGGTGGAGCTGGGTGTGCC  
 GGAGGTGCTCATGTTGAGACTGAGGACCTGGTGTGCGCAAGAACGAGAAGAGCGTGGTGTGTGCCTG  
 CTGGAGGTGGCGGGCGTGGGACGCTGGGCTGTGGCCCCACGCTCGTGCAGTTTGGAGCAGGAGA  
 TTGAGCGGGAGCTGCGTGTGCACCCAGCCCAACGCCCTGCCGCTGGGGAGGACACCACTGAAAC  
 CGCCCCGCACAGGGACTCCTGCCCGCGCCCGCATGACACCCAGCGACCTGCGCAACTCGACGAG  
 CTGGTGAGGGAGATTCTGGGCCGCTGCACCTGCCCTGACCAAGTTCCCATGATCAAGGTCTCAGAGGGGA  
 AGTACCGTGTGGGGGACTCGAGCCTGCTCATCTTTGTGCGGGTGTGAGGAGCCAGTGTGGTGGCAGT  
 GGGTGGTGGCTGGGACACGCTGGAGCATTACCTGGACAAGCACGACCCGTGCCGCTGCTCCTCCACTGCT  
 CATCGCCACCCAGCCGAGGGTCTGCACCTTTTCTCCACAGAGGGTGTGCGCCACCACTGCTCCCGCC  
 CTGCTAGCCAGTCCCTGGGAGTGGAGCGCGGGGCTCCCGGCTGAGATGACTCCCGTTAGCTTACGAAG  
 CACAAAGGAGGGGCGGAGACCCACCCAGGCCCGGGATCAGCTGCCCCCATCCCGCTCCCGCCG  
 TACTCCGGGACAGTACTCCTCAGCCTCCTCCGCCAGAGCGGCCCTTGGTACCCGAGTGTGACA  
 CAGGCACTGGCCCCGGAGGGAGCGACCCAGCCGGCGGTGACCACAGGCACCCCGGCTCTCCGAGAC  
 GCCTCCTGCCCTGCGCAGCCAGTCCCGAGACCGGCTGGATCGCGGCCGGCCCGGGGGGCCACAGGAGC  
 AGGGGAGCCAGCTGTCGGTCCCGAGCCCTGCCCGGCGGGCCCGAGCCAGAGCCGCGAGGAGCAGGCTG  
 TGCTGCTGTGCGCAGGGATCGAGACGGGCAGCACTCATGGGTGCCAAGGGGAGGGGAGTGGGGGCTC  
 GGGCAGGAGCACCCCGACTCCCGTGCCTGCGCAGCCCTGCAGCACCCCGGCTTCCCGGGTCTCCAGC  
 CCCAGTCCAGAGTTGGGCACCACCCGGCAGCATCTTCCGCACACCCCTGCAGCTCGACCCGAGCAGG  
 AGCAGCAGCTGTCCGGCGCTGGAAGAGGAGTTCCTGGCCAATGCCCGGCCCTTGAGGCTGTTGCTAG  
 CGTGACCCCACTGGACAGCCCTGACCCAGCTCGGGCCCCGACCCTCCAGCTCCTGACTCTGCCTAT  
 TGTTCTCCAGTTCCTCCTCTTCTGTCCTCAGCGTCTGGGTGGCAAATGTGGCCAACTGGGGACTCTG  
 GCCGGACGGCCAATGGGCTGCCTGGGCCCGAAGCCAAGCCCTTCCAGCTCCTCCGATGAAGGCAGCCC  
 CTGCCCTGGCATGGGGGGCCACTAGATGCACCTGGGAGCCCCCTGGCTTGCAGTGAACCTCGAGGACC  
 TGGGCACGGGGTGGATGGACACACAGCCAGACCGTAAACCTCACGTATCCCCACGCTCGGGGCCCC  
 GCCGCCCTCCGGACCCGAGAGCTGGGACATGGCATGCCCTGCACTCAGTACCCCGAGGGCTGAGCC  
 AGATTCTGGATG

**ACGCGT**ACGCGGGCGCTCGAGCAGAACTCATCTCAGAAGAGGATCTGGCAGCAAATGATATCCTGGATT  
 ACAAGGATGACGACGATAAGGTTTAA

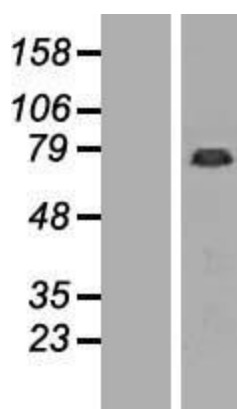


- Components:** The ORF clone is ion-exchange column purified and shipped in a 2D barcoded Matrix tube containing 10ug of transfection-ready, dried plasmid DNA (reconstitute with 100 ul of water).
- Reconstitution Method:**
1. Centrifuge at 5,000xg for 5min.
  2. Carefully open the tube and add 100ul of sterile water to dissolve the DNA.
  3. Close the tube and incubate for 10 minutes at room temperature.
  4. Briefly vortex the tube and then do a quick spin (less than 5000xg) to concentrate the liquid at the bottom.
  5. Store the suspended plasmid at -20°C. The DNA is stable for at least one year from date of shipping when stored at -20°C.
- RefSeq:** [NM\\_152236.3](#)
- RefSeq Size:** 2549 bp
- RefSeq ORF:** 2046 bp
- Locus ID:** 10634
- UniProt ID:** [Q99501](#)
- Cytogenetics:** 22q12.2
- Domains:** CH, GAS2
- MW:** 72.7 kDa
- Gene Summary:** This gene encodes a member of the growth arrest-specific 2 protein family. This protein binds components of the cytoskeleton and may be involved in mediating interactions between microtubules and microfilaments. This protein localizes to the proximal end of mature centrioles and links centrosomes to both microtubules and actin. Alternate splicing results in multiple transcript variants. A pseudogene of this gene is found on chromosome 9. [provided by RefSeq, May 2018]

### Product images:



Circular map for RC211855



Western blot validation of overexpression lysate (Cat# [LY407671]) using anti-DDK antibody (Cat# [TA50011-100]). Left: Cell lysates from untransfected HEK293T cells; Right: Cell lysates from HEK293T cells transfected with RC211855 using transfection reagent MegaTran 2.0 (Cat# [TT210002]).