

Product datasheet for **RC211854**

RABL2A (NM_007082) Human Tagged ORF Clone

Product data:

Product Type: Expression Plasmids
Product Name: RABL2A (NM_007082) Human Tagged ORF Clone
Tag: Myc-DDK
Symbol: RABL2A
Mammalian Cell Selection: Neomycin
Vector: pCMV6-Entry (PS100001)
E. coli Selection: Kanamycin (25 ug/mL)
ORF Nucleotide Sequence: >RC211854 ORF sequence
 Red=Cloning site Blue=ORF Green=Tags(s)

TTTTGTAATACGACTCACTATAGGGCGGCCGGAATTCGTCGACTGGATCCGGTACCGAGGAGATCTGCC
 GCC**CGATCGCC**

ATGGCAGAAGACAAAACCAACCGAGTGAGTTGGACCAAGGGAAGTATGATGCTGATGACAACGTGAAGA
 TCATCTGCCTGGGAGACAGCGCAGTGGGCAAATCCAACTCATGGAGAGATTTCTCATGGATGGCTTTCA
 GCCACAGCAGCTGTCCACGTACGCCCTGACCCTGTACAAGCACACAGCCACGGTAGATGGAAGGACCATC
 CTTGTGGACTTTTGGGACACGGCAGGCCAGGAGCGGTTCCAGAGCATGCATGCCTCTACTACCACAAGG
 CCCACGCCTGCATCATGGTGTTGATGTACAGAGGAAAGTCACCTATAGGAACCTGAGCACCTGGTATA
 CAGAGCTTCGGGAGTTTCAGGCCAGAGATCCCATGCATCGTGGTGGCCAATAAAATTGATGCAGACATAAAC
 GTGACCCAAAAAAGCTTCAATTTTGCCAAGAAGTTCTCCCTGCCCTGTATTTCTGCTCGGCTGCTGATG
 GTACCAATGTTGTGAAGCTCTTCAATGATGCAATTCGATTAGCTGTGCTTACAAACAGAACTCCCAGGA
 CTTTCATGGATGAGATTTTTCAGGAGCTCGAGAAGTTCAGCTTGGAGCAGGAAGAGGAGGACGTGCCAGAC
 CAGGAACAGAGCAGCAGCATCGAGACCCCATCAGAGGAGGCGGCCTCTCCCCACAGC

ACGCGTACGCGGCCGCTCGAGCAGAACTCATCTCAGAAGAGGATCTGGCAGCAAATGATATCCTGGATT
 ACAAGGATGACGACGATAAGGTTTAA

Protein Sequence: >RC211854 protein sequence
 Red=Cloning site Green=Tags(s)

MAEDKTKPSELDQGYDADDNVKIIICLGDSAVGKSKLMERFLMDGFQPQQLSTYALTYKHTATVDGRTI
 LVDFWDTAGQERFQSMHASYYHKAHACIMVFDVQRKVTYRNLSTWYTELREFRPEIPCIVVANKIDADIN
 VTQKSFNFAKKFSPLPYFVSAADGTNVVKLFNDAIRLAVSYKQNSQDFMDEIFQLENFLEQEEEDVDP
 QEQSSSIETPSEEASPHS

TRTRPLEQKLISEEDLAANDILDYKDDDDKV

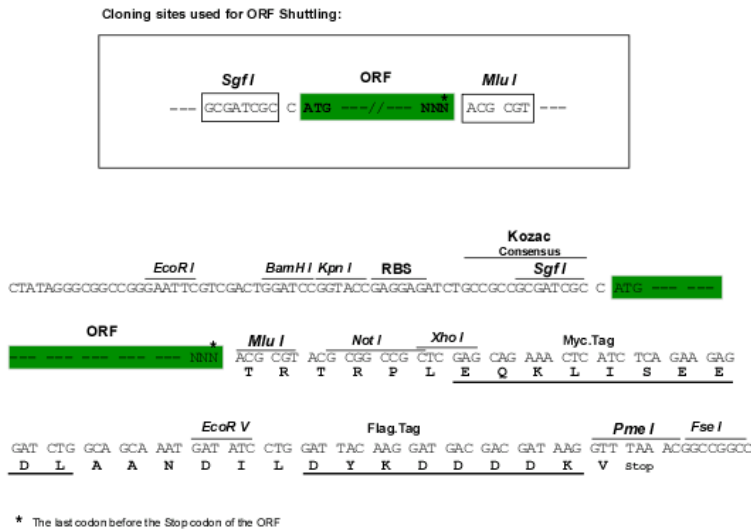


[View online »](#)

Chromatograms: https://cdn.origene.com/chromatograms/mk6307_g02.zip

Restriction Sites: SgfI-MluI

Cloning Scheme:



ACCN: NM_007082

ORF Size: 687 bp

OTI Disclaimer: The molecular sequence of this clone aligns with the gene accession number as a point of reference only. However, individual transcript sequences of the same gene can differ through naturally occurring variations (e.g. polymorphisms), each with its own valid existence. This clone is substantially in agreement with the reference, but a complete review of all prevailing variants is recommended prior to use. [More info](#)

OTI Annotation: This clone was engineered to express the complete ORF with an expression tag. Expression varies depending on the nature of the gene.

Components: The ORF clone is ion-exchange column purified and shipped in a 2D barcoded Matrix tube containing 10ug of transfection-ready, dried plasmid DNA (reconstitute with 100 ul of water).

Reconstitution Method:

1. Centrifuge at 5,000xg for 5min.
2. Carefully open the tube and add 100ul of sterile water to dissolve the DNA.
3. Close the tube and incubate for 10 minutes at room temperature.
4. Briefly vortex the tube and then do a quick spin (less than 5000xg) to concentrate the liquid at the bottom.
5. Store the suspended plasmid at -20°C. The DNA is stable for at least one year from date of shipping when stored at -20°C.

RefSeq: [NM_007082.5](#)

RefSeq Size: 1143 bp

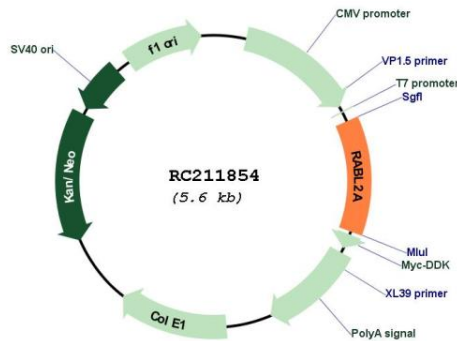
RefSeq ORF: 687 bp

Locus ID: 11159

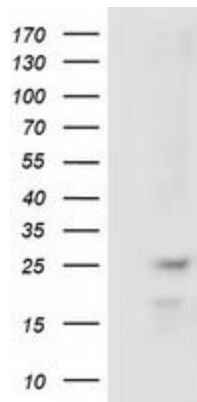
UniProt ID: Q9UBK7
Cytogenetics: 2q14.1
Domains: ras, RAN, RAS, RHO, RAB
Protein Families: Druggable Genome
MW: 26.2 kDa

Gene Summary: This gene is a member of the RAB gene family which belongs to the RAS GTPase superfamily. The proteins in the family of RAS-related signaling molecules are small GTP-binding proteins that play important roles in the regulation of exocytotic and endocytotic pathways. This gene maps to the site of an ancestral telomere fusion event and may be a subtelomeric gene. Alternative splicing results in multiple transcript variants encoding different isoforms. [provided by RefSeq, Apr 2015]

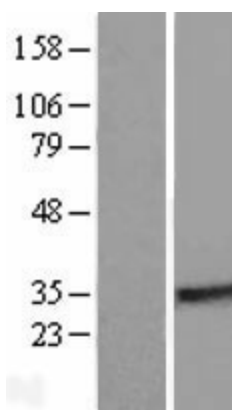
Product images:



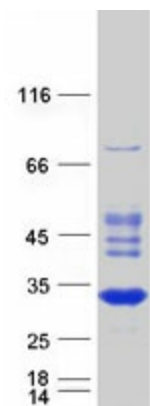
Circular map for RC211854



HEK293T cells were transfected with the pCMV6-ENTRY control (Cat# [PS100001], Left lane) or pCMV6-ENTRY RABL2A (Cat# RC211854, Right lane) cDNA for 48 hrs and lysed. Equivalent amounts of cell lysates (5 ug per lane) were separated by SDS-PAGE and immunoblotted with anti-RABL2A (Cat# [TA502023]). Positive lysates [LY416219] (100ug) and [LC416219] (20ug) can be purchased separately from OriGene.



Western blot validation of overexpression lysate (Cat# [LY416219]) using anti-DDK antibody (Cat# [TA50011-100]). Left: Cell lysates from untransfected HEK293T cells; Right: Cell lysates from HEK293T cells transfected with RC211854 using transfection reagent MegaTran 2.0 (Cat# [TT210002]).



Coomassie blue staining of purified RABL2A protein (Cat# [TP311854]). The protein was produced from HEK293T cells transfected with RABL2A cDNA clone (Cat# RC211854) using MegaTran 2.0 (Cat# [TT210002]).