

Product datasheet for **RC211850**

SIL1 (NM_022464) Human Tagged ORF Clone

Product data:

Product Type:	Expression Plasmids
Product Name:	SIL1 (NM_022464) Human Tagged ORF Clone
Tag:	Myc-DDK
Symbol:	SIL1
Synonyms:	BAP; MSS; ULG5
Mammalian Cell Selection:	Neomycin
Vector:	pCMV6-Entry (PS100001)
E. coli Selection:	Kanamycin (25 ug/mL)



[View online »](#)

ORF Nucleotide Sequence:

>RC211850 representing NM_022464
 Red=Cloning site Blue=ORF Green=Tags(s)

TTTTGTAATACGACTCACTATAGGGCGGCCGGAATTCGTCGACTGGATCCGGTACCGAGGAGATCTGCC
 GCC**CGCATCGCC**

ATGGCTCCCCAGAGCCTGCCTTCATCTAGGATGGCTCCTCTGGGCATGCTGCTTGGGCTGCTGATGGCCG
 CCTGCTTACCTTCTGCCTCAGTCATCAGAACCTGAAGGAGTTTGCCTGACCAACCCAGAGAAGAGCAG
 CACCAAAGAAACGGAGAGAAAAGAAACCAAGCCGAGGAGGAGCTGGATGCTGAAGTCTGGAGGTGTTT
 CACCCGACGCATGAGTGGCAGGCCCTTACGCCAGGGCAGGCTGTCCCTGCAGGATCCCACGTACGGCTGA
 ATCTTCAGACTGGGAAAGAGAGGCAAACTCCAATATGAGGACAAGTCCGAAATAATTTGAAAGGCAA
 AAGGCTGGATATCAACACCAACACCTACACATCTCAGGATCTCAAGAGTGCCTGGCAAAATTAAGGAG
 GGGGCAGAGATGGAGAGTTCAAAGGAAGACAAGGCAAGGCAGGCTGAGGTAAAGCGGCTCTCCGCCCA
 TTGAGGAACTGAAGAAAGACTTTGATGAGCTGAATGTTGTCATTGAGACTGACATGCAGATCATGGTACG
 GCTGATCAACAAGTTCAATAGTTCAGCTCCAGTTTGAAGAGAAGATTGCTGCGCTCTTTGATCTTGAA
 TATTATGTCCATCAGATGGACAATGCGCAGGACCTGCTTTCCTTTGGTGGTCTTCAAGTGGTGATCAATG
 GGCTGAACAGCACAGAGCCCCTCGTGAAGGAGTATGCTGCGTGTGCTGGGCGCTGCCTTTTCCAGCAA
 CCCCAAGTCCAGGTGGAGGCCATCGAAGGGGGAGCCCTGCAGAAGTGTGTCATCCTGGCCACGGAG
 CAGCCGCTCACTGCAAAGAAGAAGTCTGTTGCACTGTGCTCCCTGCTGCGCCACTTCCCCTATGCC
 AGCGGCAGTTCCTGAAGTCTGGGGGGCTGCAGGTCCTGAGGACCTGGTGCAGGAGAAGGGCACGGAGGT
 GCTCGCGTGCAGTGGTCACTGCTCTACGACCTGGTACGGAGAAGATGTTCCGGCAGGAGGAGGCT
 GAGTACCCAGGAGATGCCCCAGAGAAGCTGCAGCAGTATCGCCAGGTACACCTCTGCCAGGCTGT
 GGAACAGGGCTGGTGCAGATCACGGCCACCTCCTGGCGCTGCCGAGCATGATGCCGTGAGAAGGT
 GCTGCAGACACTGGGCGTCTCCTGACCACCTGCCGGGACCGCTACCGTACAGACCCCAAGTCCGGCAGG
 ACACTGGCCAGCCTGCAGGCTGAGTACCAGGTGCTGGCCAGCCTGGAGCTGCAGGATGGTGAAGACGAGG
 GCTACTCCAGGAGCTGCTGGGCTCTGTCAACAGCTTGCTGAAGGAGCTGAGA

ACGCGTACGCGGCCGCTCGAGCAGAACTCATCTCAGAAGAGGATCTGGCAGCAAATGATATCCTGGATT
 ACAAGGATGACGACGATAAGGTTTAA

Protein Sequence:

>RC211850 representing NM_022464
 Red=Cloning site Green=Tags(s)

MAPQSLPSSRMAPLGMLLGLLMAACFTFCLSHQNLKEFALTNPEKSSTKETERKETKAEELDAEVLV
 HPTHEWQALQPGQAVPAGSHVRLNLQTEREAKLYEDKFRNNLKGKRLDINTNTYTSQDLKSALAKFKE
 GAEMESSKEDKARQAEVKRFRPIEELKKDFDELNVVIEITDMQIMVRLINKFNSSSSLEEKIAALFDLE
 YYVHQMDNAQDLLSFGLQVINGLNSTEPLVKEYAAFVLGAFFSNPKVQVEAIEGGALQKLLVILATE
 QPLTAKKKVLFALCSLLRHFPYQRQFLKGLQVLRRTLQVEKQTEVLAVRVVTLTYDLVTEKMFEEEE
 ELTQEMSPEKLQYRQVHLLPGLWEQGWCEITAHLLALPEHDAREKVLQTLGVLLTTCRDRYRQDPQLGR
 TLASLQAEYQVLASLELQDGEDEGYFQELLGSVNSLLKELR

TRTRPLEQKLISEEDLAANDILDYKDDDDKV

Chromatograms:

https://cdn.origene.com/chromatograms/mk6161_d01.zip

Restriction Sites:

Sgfl-Mlul

Cloning Scheme:



ACCN: NM_022464

ORF Size: 1383 bp

OTI Disclaimer: The molecular sequence of this clone aligns with the gene accession number as a point of reference only. However, individual transcript sequences of the same gene can differ through naturally occurring variations (e.g. polymorphisms), each with its own valid existence. This clone is substantially in agreement with the reference, but a complete review of all prevailing variants is recommended prior to use. [More info](#)

OTI Annotation: This clone was engineered to express the complete ORF with an expression tag. Expression varies depending on the nature of the gene.

Components: The ORF clone is ion-exchange column purified and shipped in a 2D barcoded Matrix tube containing 10ug of transfection-ready, dried plasmid DNA (reconstitute with 100 ul of water).

Reconstitution Method:

1. Centrifuge at 5,000xg for 5min.
2. Carefully open the tube and add 100ul of sterile water to dissolve the DNA.
3. Close the tube and incubate for 10 minutes at room temperature.
4. Briefly vortex the tube and then do a quick spin (less than 5000xg) to concentrate the liquid at the bottom.
5. Store the suspended plasmid at -20°C. The DNA is stable for at least one year from date of shipping when stored at -20°C.

RefSeq: [NM_022464.5](#)

RefSeq Size: 1815 bp

RefSeq ORF: 1386 bp

Locus ID: 64374

UniProt ID: [Q9H173](#)

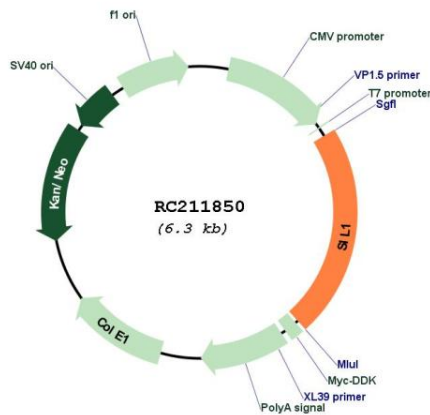
Cytogenetics: 5q31.2

Protein Families: Protease, Secreted Protein, Transmembrane

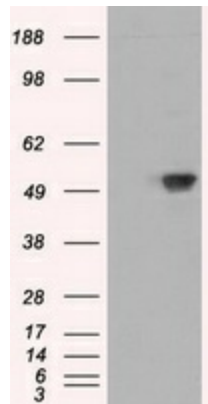
MW: 48.8 kDa

Gene Summary: This gene encodes a resident endoplasmic reticulum (ER), N-linked glycoprotein with an N-terminal ER targeting sequence, 2 putative N-glycosylation sites, and a C-terminal ER retention signal. This protein functions as a nucleotide exchange factor for another unfolded protein response protein. Mutations in this gene have been associated with Marinesco-Sjogren syndrome. Alternate transcriptional splice variants have been characterized. [provided by RefSeq, Jul 2008]

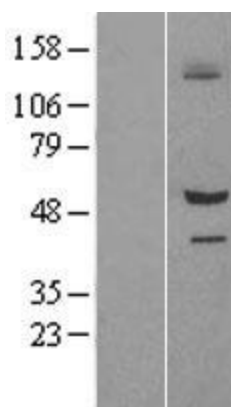
Product images:



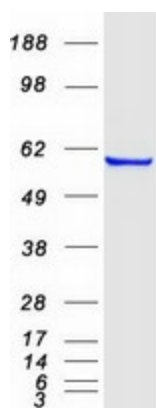
Circular map for RC211850



HEK293T cells were transfected with the pCMV6-ENTRY control (Cat# [PS100001], Left lane) or pCMV6-ENTRY SIL1 (Cat# RC211850, Right lane) cDNA for 48 hrs and lysed. Equivalent amounts of cell lysates (5 ug per lane) were separated by SDS-PAGE and immunoblotted with anti-SIL1 (Cat# [TA501011]). Positive lysates [LY402924] (100ug) and [LC402924] (20ug) can be purchased separately from OriGene.



Western blot validation of overexpression lysate (Cat# [LY402924]) using anti-DDK antibody (Cat# [TA50011-100]). Left: Cell lysates from untransfected HEK293T cells; Right: Cell lysates from HEK293T cells transfected with RC211850 using transfection reagent MegaTran 2.0 (Cat# [TT210002]).



Coomassie blue staining of purified SIL1 protein (Cat# [TP311850]). The protein was produced from HEK293T cells transfected with SIL1 cDNA clone (Cat# RC211850) using MegaTran 2.0 (Cat# [TT210002]).