

CAGCAGCATGTTACCTCCGAAGAAATTTGTTCTCCTCTCAGCACAGGGGAGCCTTATGTTTCATAAAC
TTAGACCTGTAGATCAACTGAGGCATCTACTTGTGAGTAAATGTGGGAGGAGATGGAGAAGAGATTGAAAG
ATTCCTTAAATTACATCAGGAAGACCAGGCTTGTGCAACTTGCCTTATTCTTGCTTGCTCCACTGCTGCC
TGTGATAGAGAAGTATCTGCCTGGGCTACTCGGCTTTCTTTAGGTATGGTGGTGAAGCACAGATGAGAT
TTCCAACCACTCTCCGCCTCCAAGTAAATGTTGGTCCCCTCTGGGGTCTCCTGTCTATTCTAGTTCTCC
TGTTCTAGTGGTAGTCCCTATCCAAATCCATCCTTTTTGGGAACACCGTCTCATGGTATACAGCCTCCT
GCCATGTCAACTCCAGTGTGTGCTCTGGGAAACCCAGCAACTCAGGCCACAAATATGAGTGTGTGACTG
GACCAGAGATTGTACTCTGGAAAACACAATGGTATTTGCATTTACTTTTTCTCGGATCATGGGAAACAT
TTGGGATGCAAGCTTAGTTGTGGAGAGAATATTCAAGAGTGGCAACAGAGAGATCACTGCAATTGAAAGT
AGTGTTCCTGCCAACTGCTAGAGTCAGTGCTACAAGAACTAAAGGGTTTGCAGGAATTTCTAGACAGAA
ACTCCCAGTTTGCAGGAGGACCATTAGGAAATCCAAATACTACTGCTAAAGTGCAGCAGAGGCTGATAGG
ATTCATGCGTCTGAAAACGGAAATCCCCAGCAATGCAACAGGAACTGCAGAGGAAGTTTCATGAGGCT
CAACTAAGTAAAAGATTTCACTTCAGGCAATTCAGCAGTTGGTTCGAAAATCATACAGGCTCTGGCTT
TATGAAAACCTTTTGTGAACATCAATTCATATCATTGTGGCAGAACTCAGAAGGAATTCAGAGCA
GCTGAAGATCACCACCTTAAAGATCTTGAATCAGGGACAAGAAGTCAAGGGCATTAAATTGCTTCT
CTATCAACTGCTACATCAGAGATAATGCCGCTTTGATGGCATTAGTTTACATTTACAGGATATCTGCC
CACTTCTATATAGCACTGATGATGCAATTTGTTCTAAGGCAAATGAGCTTCTCCAGCGTTCCCGACAAGT
TCAAAAATAGACTGAAAAAGAAAGAAATGTTAAGGGAATCATTAAAGGAATATCAAAAAATAGCAATCAA
GTGGACCTTTCCAATGTTTGTGCTCAGTATAGACAAGTGAGATTTTATGAGGGTGTGGTGGAACTTTCTC
TTACGGCTGCAGAGAAAAAGATCTCAAGGCTTTGGGCTTCATTTCTATAAACATGGAGAACCAGAAGA
AGACATAGTTGGACTTCAGGCCTTCCAAGAAAGATTAACAGTTACAAATGCATTACAGACACACTTCAA
GAACTGGTAAATCAAAGTAAAGCCGCTCCTCAGTCTCCAGTGTACCCAAAAAACCTGGTCTCCAGTGT
TGTCTCTGATCCAAATATGCTGAGTAAATGAAGAAGCAGGACATCATTGAAACAAATGCTTAAATTGTC
ACAGCGATCCAAGGATGAGCTCTTTAGTATTGCCCTTTATAATTGGCTAATAACAAGTCGACCTTGAGAT
AAGCTGCTACAGGTTGCTTCTCCATTTCTGGAGCCACATCTAGTCCGAATGGCCAAAGTTGATCAAAACA
GAGTTCGTATATGGATTTACTCTGGCGTATTACGAGAAGAACAGAAGTTTTCAGTAATGCTGCTGCTGT
ACTGTCCAGACTGGCTGACATGCATAGCACAGAAATTTCACTTCAGCAGCGACTAGAGTACATTGCTCGA
GCCATTCTTAGTGCCAAAAGTTCCACTGCCATTTCAATAGCTGCCGATGGTGAATTTCTTCATGAAT
TAGAAGAAAAATGGAGGTTGCTAGGATCCAATTCAGATACAGGAGACACTACAAGGCAGTATCCCA
TCATTCTTGTACAGGATGCAGTTTCTCAGCTGGATTCTGAGCTGATGGACATAACTAAGCTTTATGGG
GAATTTGCTGACCCATTTAACTTGCAGAGTGCAAACTTGAATTAATTCATTGTGCCGTTATTCAGACC
CTATATTGGTGCAGACACTTTGGCAAGATATCATAGAGAAAGAATTGAGTGACAGTGTGACATTGAGCTC
CTCGGATAGAATGCATGCTTCTAGTCTCAAGATTGTTCTCCTTGGCAAAATTTATGCTGGCACACCACGC
TTCTTTCTTTAGATTTTATTGTACAGTTTTTGAACAGCAGGTTTGTACTTTGAACTGGGATGTGGGCT
TCGTAATACAGACAATGAATGAAATGGAGTACCATTACCTAGACTACTAGAAGTTTATGATCAGTTGTT
CAAATCACGGGATCCATTCTGGAACAGAATGAAGAAGCCACTGCACCTTTTGGATTGTATACATGTATTA
TTGATAAGATATGTTGAGAATCCCAGCCAAGTTTTAAATTTGTGAAAGGAGAAGATTTACAAATCTCTGCC
TGGATGCTGTTTGTGTTACCTTGTGAGCTCCAGTCTATGAGCTCGTCAGTAGCAGTACAAGCCATCAC
TGGGAATTTAAATCTCTCAAGCTAAATTAGAACGGCTTCAT

ACGCGTACGCGGCCGCTCGAGCAGAACTCATCTCAGAAGAGGATCTGGCAGCAATGATATCCTGGATT
ACAAGGATGACGACGATAAGGTTTAA

Protein Sequence: >RC211845 representing NM_153485
 Red=Cloning site Green=Tags(s)

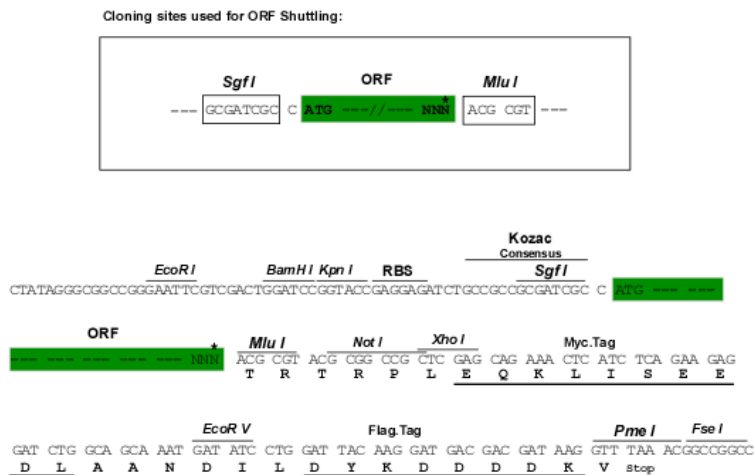
MPSSLLGAAMPASTSAAALQEALENAGRLIDRQLQEDRMYPDLSELLMVSAPNNPTVSGMSDMDYPLQGP
 GLLSVPNLPEISSIRRVLPPELVEQFGHMQCNCMMGVFPPISRALTIDSDIFMWNVEDGGDLAYFDGL
 SETILAVGLVKPKAGIFQPHVRHLLVLATPVDIVILGLSYANLQTGSGVLNDSL SGMQLLPDPL YSLPT
 DNTYLLTITSTDNGRIFLAGKDGLYEVAQAEAGWFSQRCKRINHSSLSL SFLVPSLLQFTFSEDDPIL
 QIAIDNSRNILYTRSEKVIQVYDLGQDQGMRSRVASVSQNAIVSAAGNIARTIDRSVFKPIVQIAVIEN
 SESLDCQLLAVTHAGVRLYFSTCPFRQPLARPNTLTLVHVRLPPGFSASSTVEKPSKVHRALYSKGILLM
 AASENEDNDILWCVNHDTFPFQKPMMETQMTAGVDGHSWALSAIDELKVDKIITPLNKDHIPITDSPVVV
 QQHMLPPKKFVLLSAQGSMLMFHKLRPVDQLRHLLVSNVGGDGEEIERFFKLHQEDQACATCLILACSTAA
 CDREVSAWATRAFFRYGGEAQMRFPTTLPSPNVGPILGSPVYSSSPVPSGSPYPNPSFLGTPSHGIQPP
 AMSTPVCALGNPATQATNMSCVTGPEIVYSGKHNGICIYFSRIMGNIWDASLVVERIFKSGNREITAIES
 SVPCQLLESVLQELKGLQEFDRNSQFAGGPLGNPNTTAKVQORLIGFMRPENGNPQQMQQELQRKFHEA
 QLSEKISLQAIQQLVRKSYQALALWKLCEHQFTIIVAELQKELQELKITTFFKDLVIRDKELTGALIAS
 LINCYIRDNAAVDGISLHLQDQCPLLYSTDDAICSKANELLRSRQVQNKTEKERMLRESLKEYQKISNQ
 YDL SNVCAQYRQVRFYEGVVELSLTAAEKKDPQGLGLHFYKHGPEEDI VGLQAFQERLNSYKCIDTDLQ
 ELVNQSKAAPQSPVPPKPGPPVLSDDPMLSNEEAGHHEQMLKLSQRSKDELFSIALYNWLIQVDLAD
 KLLQVASPFLEPHLVRMAKVDQNRVRYMDLLWRYYEKNRSFSNAARVLSRLADMHSTEISLQQRLEYIAR
 AILSAKSSTAISSIAADGEFLHELEEKMEVARIQLQIQETLQRQYSHHSSVDQAVSQLDSELMIDITKLYG
 EFADPFKLAECKLAIHCAGYSDPILVQTLWQDIIEKELSDSVTLSSSDRMHALSKIVLLGKIYAGTPR
 FFPLDFIVQFLEQQVCTLNWDVGFVIQTMNEIGVPLPRLLEVDQLFKSRDPFWNRMKPLHLDCIHVL
 LIRYVENPSQVLNCERRRFTNLCLDAVCGYLVLEQSMSSSVAVQAITGNFKSLQAKLERLH

TRTRPLEQKLISEEDLAANDILDYKDDDDKV

Chromatograms: https://cdn.origene.com/chromatograms/mk6204_e09.zip

Restriction Sites: SgfI-MluI

Cloning Scheme:



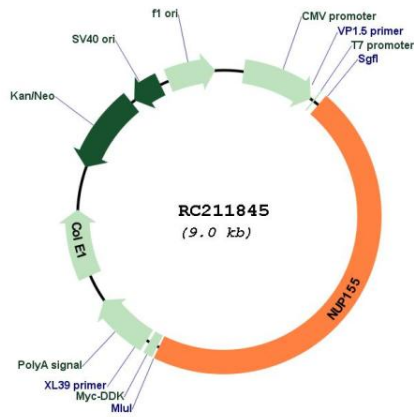
* The last codon before the Stop codon of the ORF

ACCN: NM_153485

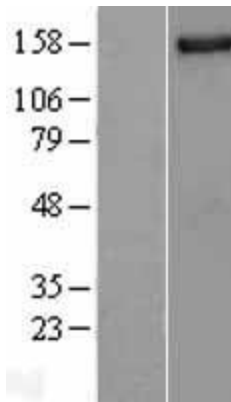
ORF Size: 4173 bp

OTI Disclaimer:	The molecular sequence of this clone aligns with the gene accession number as a point of reference only. However, individual transcript sequences of the same gene can differ through naturally occurring variations (e.g. polymorphisms), each with its own valid existence. This clone is substantially in agreement with the reference, but a complete review of all prevailing variants is recommended prior to use. More info
OTI Annotation:	This clone was engineered to express the complete ORF with an expression tag. Expression varies depending on the nature of the gene.
Components:	The ORF clone is ion-exchange column purified and shipped in a 2D barcoded Matrix tube containing 10ug of transfection-ready, dried plasmid DNA (reconstitute with 100 ul of water).
Reconstitution Method:	<ol style="list-style-type: none">1. Centrifuge at 5,000xg for 5min.2. Carefully open the tube and add 100ul of sterile water to dissolve the DNA.3. Close the tube and incubate for 10 minutes at room temperature.4. Briefly vortex the tube and then do a quick spin (less than 5000xg) to concentrate the liquid at the bottom.5. Store the suspended plasmid at -20°C. The DNA is stable for at least one year from date of shipping when stored at -20°C.
RefSeq:	NM_153485.1 , NP_705618.1
RefSeq Size:	4355 bp
RefSeq ORF:	4176 bp
Locus ID:	9631
UniProt ID:	O75694
Cytogenetics:	5p13.2
Domains:	Nucleoporin
MW:	155 kDa
Gene Summary:	Nucleoporins are proteins that play an important role in the assembly and functioning of the nuclear pore complex (NPC) which regulates the movement of macromolecules across the nuclear envelope (NE). The protein encoded by this gene plays a role in the fusion of NE vesicles and formation of the double membrane NE. The protein may also be involved in cardiac physiology and may be associated with the pathogenesis of atrial fibrillation. Alternative splicing results in multiple transcript variants of this gene. A pseudogene associated with this gene is located on chromosome 6. [provided by RefSeq, May 2013]

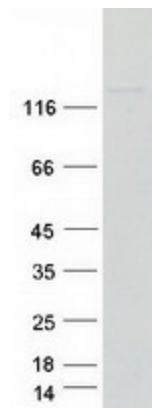
Product images:



Circular map for RC211845



Western blot validation of overexpression lysate (Cat# [LY403513]) using anti-DDK antibody (Cat# [TA50011-100]). Left: Cell lysates from untransfected HEK293T cells; Right: Cell lysates from HEK293T cells transfected with RC211845 using transfection reagent MegaTran 2.0 (Cat# [TT210002]).



Coomassie blue staining of purified NUP155 protein (Cat# [TP311845]). The protein was produced from HEK293T cells transfected with NUP155 cDNA clone (Cat# RC211845) using MegaTran 2.0 (Cat# [TT210002]).