

Product datasheet for **RC211843**

CCDC43 (NM_001099225) Human Tagged ORF Clone

Product data:

Product Type: Expression Plasmids
Product Name: CCDC43 (NM_001099225) Human Tagged ORF Clone
Tag: Myc-DDK
Symbol: CCDC43
Mammalian Cell Selection: Neomycin
Vector: pCMV6-Entry (PS100001)
E. coli Selection: Kanamycin (25 ug/mL)
ORF Nucleotide Sequence: >RC211843 representing NM_001099225
Red=Cloning site Blue=ORF Green=Tags(s)

TTTTGTAATACGACTCACTATAGGGCGGCCGGAATTCGTCGACTGGATCCGGTACCGAGGAGATCTGCC
GCC**CGATCGCC**

ATGGCGGCGCCAGCGAAGTGGCCGCGATAGCCCCTGGCGAAGGCGATGGCGGAGGCGGCGGCTTTGGCT
CCTGGCTGGACGGACGGTTGGAGGCACTGGGAGTGGACCGAGCCGTTTATGGAGCCTACATCTTGGGAT
CCTGCAGGAGGAGGAGGAAGAAGAGAAGCTGGACGCTCTGCAGGGGATCCTCTCTGCTTTCTGGAAGAA
GATTCCTCCTTAATATCTGCAAGGAGATTGTGGAACGATGGTCAGAACTCAGAATGTTGTCACCAAAG
TGAAAAAGAAGATGAAGTACAGGCCATTGCCACCCTAATTGAGAAGCAGGCACAATCGTAGTAAAGCC
AAGGATGGTGTGTCAGAAGAGGAGAAGCAGAGAAAAGCTGCCTCCTGGCCAGTATGCTGATGTGACAGAT
GAAGAGGATTCTGTTCCGAAACCAATGTGGAAGATGTCCT

ACGCGTACGCGGCCGCTCGAGCAGAACTCATCTCAGAAGAGGATCTGGCAGCAATGATATCCTGGATT
ACAAGGATGACGACGATAAGGTTTAA

Protein Sequence: >RC211843 representing NM_001099225
Red=Cloning site Green=Tags(s)

MAAPSEVAAIAPGEGDGGGGFGSWLDGRLEALGVDRVYGYIILGILQEEEEEEKLDALQGILSAFLEE
DSLNNICKEIVERWSETQNVVTKVKKEDDEVQAIATLIEKQAQIVVKPRMVSEEEKQRKAALLAQYADVTD
EEDSVPKHQGRCP

TRTRPLEQKLISEEDLAANDILDYKDDDDKV

Chromatograms: https://cdn.origene.com/chromatograms/ja1250_d03.zip

Restriction Sites: SgfI-MluI



[View online »](#)

Cloning Scheme:


ACCN: NM_001099225

ORF Size: 462 bp

OTI Disclaimer: The molecular sequence of this clone aligns with the gene accession number as a point of reference only. However, individual transcript sequences of the same gene can differ through naturally occurring variations (e.g. polymorphisms), each with its own valid existence. This clone is substantially in agreement with the reference, but a complete review of all prevailing variants is recommended prior to use. [More info](#)

OTI Annotation: This clone was engineered to express the complete ORF with an expression tag. Expression varies depending on the nature of the gene.

Components: The ORF clone is ion-exchange column purified and shipped in a 2D barcoded Matrix tube containing 10ug of transfection-ready, dried plasmid DNA (reconstitute with 100 ul of water).

- Reconstitution Method:**
1. Centrifuge at 5,000xg for 5min.
 2. Carefully open the tube and add 100ul of sterile water to dissolve the DNA.
 3. Close the tube and incubate for 10 minutes at room temperature.
 4. Briefly vortex the tube and then do a quick spin (less than 5000xg) to concentrate the liquid at the bottom.
 5. Store the suspended plasmid at -20°C. The DNA is stable for at least one year from date of shipping when stored at -20°C.

RefSeq: [NM_001099225.1](#), [NP_001092695.1](#)

RefSeq Size: 2088 bp

RefSeq ORF: 465 bp

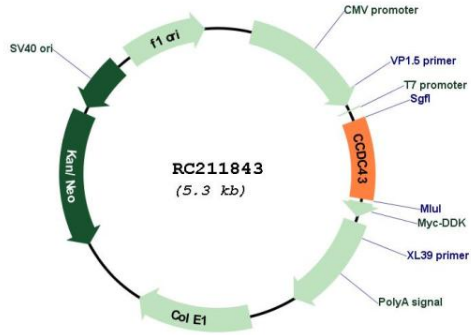
Locus ID: 124808

UniProt ID: [Q96MW1](#)

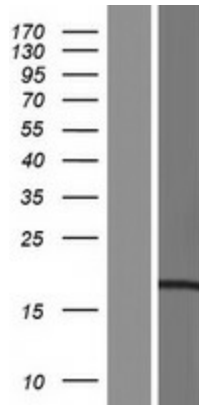
Cytogenetics: 17q21.31

MW: 16.6 kDa

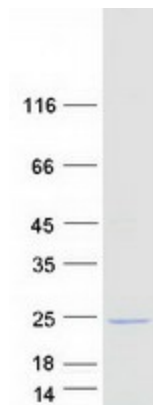
Product images:



Circular map for RC211843



Western blot validation of overexpression lysate (Cat# [LY420375]) using anti-DDK antibody (Cat# [TA50011-100]). Left: Cell lysates from untransfected HEK293T cells; Right: Cell lysates from HEK293T cells transfected with RC211843 using transfection reagent MegaTran 2.0 (Cat# [TT210002]).



Coomassie blue staining of purified CCDC43 protein (Cat# [TP311843]). The protein was produced from HEK293T cells transfected with CCDC43 cDNA clone (Cat# RC211843) using MegaTran 2.0 (Cat# [TT210002]).