

Product datasheet for **RC211840**

MTP18 (MTFP1) (NM_001003704) Human Tagged ORF Clone

Product data:

Product Type: Expression Plasmids
Product Name: MTP18 (MTFP1) (NM_001003704) Human Tagged ORF Clone
Tag: Myc-DDK
Symbol: MTP18
Synonyms: HSPC242; MTP18
Mammalian Cell Selection: Neomycin
Vector: pCMV6-Entry (PS100001)
E. coli Selection: Kanamycin (25 ug/mL)
ORF Nucleotide Sequence: >RC211840 representing NM_001003704
Red=Cloning site **Blue**=ORF **Green**=Tags(s)

TTTTGTAATACGACTCACTATAGGGCGGCCGGAATTCGTCGACTGGATCCGGTACCGAGGAGATCTGCC
GCC**CGATCGCC**

ATGTCAGAGCCGAGCCGCGGGCGCAGAGCGCATCTCTACCGGACACGTGGGTGCGATACCTGGGCT
ATGCCAATGAGGTGGCGAGGCTTTCGCTCTCTGTGCCAGCGCGTGGTGTGGCTGAGCTATGGCGT
GGCCAGCTCTACGTGCTGGCGGATGCCATTGACAAAGGCAAGAAGGCTGGAGAGGTCGGTGATTTCT
CCTGGACTCCAGCCTGCGCAAGCTCTACCCAACAGTGGGAAGCCAGCTCCTCCTGATCATACTGGT
ACCTGGCCTGTGCATCGCCTCCTGCTTTCATGTCAACCTCCTACTCCTGCCAGGGAATGTGGACACCTGG
CTCCCTGGTGTCCAAGACCCTGGCACCTGGGTGGGTTTGAGCTGGACAGAAGCT

ACGCGTACGCGGCCGCTCGAGCAGAACTCATCTCAGAAGAGGATCTGGCAGCAAATGATATCCTGGATT
ACAAGGATGACGACGATAAGGTTTAA

Protein Sequence: >RC211840 representing NM_001003704
Red=Cloning site **Green**=Tags(s)

MSEPQPRGAERDLYRDTWRYLGYANEVGEAFRSLVPAAVVWLSYGVASSYVLADAIDKGGKAGEVGGFP
PGLQAQALPNSGEAQLLLIILWYLACASASCFMSTSYSCQGMWTPGSLVSKDPGTWVGLSWTEA

TRTRPLEQKLISEEDLAANDILDYKDDDDKV

Chromatograms: https://cdn.origene.com/chromatograms/ja1434_e03.zip

Restriction Sites: SgfI-MluI



[View online »](#)

Cloning Scheme:


ACCN: NM_001003704

ORF Size: 405 bp

OTI Disclaimer: The molecular sequence of this clone aligns with the gene accession number as a point of reference only. However, individual transcript sequences of the same gene can differ through naturally occurring variations (e.g. polymorphisms), each with its own valid existence. This clone is substantially in agreement with the reference, but a complete review of all prevailing variants is recommended prior to use. [More info](#)

OTI Annotation: This clone was engineered to express the complete ORF with an expression tag. Expression varies depending on the nature of the gene.

Components: The ORF clone is ion-exchange column purified and shipped in a 2D barcoded Matrix tube containing 10ug of transfection-ready, dried plasmid DNA (reconstitute with 100 ul of water).

Reconstitution Method:

1. Centrifuge at 5,000xg for 5min.
2. Carefully open the tube and add 100ul of sterile water to dissolve the DNA.
3. Close the tube and incubate for 10 minutes at room temperature.
4. Briefly vortex the tube and then do a quick spin (less than 5000xg) to concentrate the liquid at the bottom.
5. Store the suspended plasmid at -20°C. The DNA is stable for at least one year from date of shipping when stored at -20°C.

RefSeq: [NM_001003704.3](#)

RefSeq Size: 960 bp

RefSeq ORF: 408 bp

Locus ID: 51537

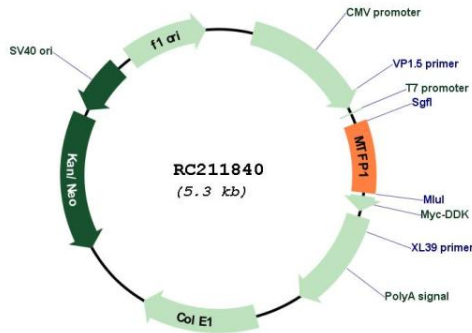
UniProt ID: [Q9UDX5](#)

Cytogenetics: 22q12.2

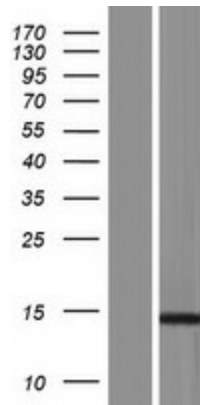
MW: 14.3 kDa

Gene Summary: MTP18 is a mitochondrial protein and downstream target of the phosphatidylinositol 3-kinase (see PIK3CA, MIM 171834) signaling pathway that plays a role in cell viability and mitochondrial dynamics (Tondera et al., 2004 [PubMed 15155745]).[supplied by OMIM, Mar 2008]

Product images:



Circular map for RC211840



Western blot validation of overexpression lysate (Cat# [LY423990]) using anti-DDK antibody (Cat# [TA50011-100]). Left: Cell lysates from untransfected HEK293T cells; Right: Cell lysates from HEK293T cells transfected with RC211840 using transfection reagent MegaTran 2.0 (Cat# [TT210002]).