

Product datasheet for **RC211838**

TBX18 (NM_001080508) Human Tagged ORF Clone

Product data:

Product Type:	Expression Plasmids
Product Name:	TBX18 (NM_001080508) Human Tagged ORF Clone
Tag:	Myc-DDK
Symbol:	TBX18
Synonyms:	CAKUT2
Mammalian Cell Selection:	Neomycin
Vector:	pCMV6-Entry (PS100001)
E. coli Selection:	Kanamycin (25 ug/mL)



[View online »](#)

ORF Nucleotide Sequence:

>RC211838 representing NM_001080508
 Red=Cloning site Blue=ORF Green=Tags(s)

TTTTGTAATACGACTCACTATAGGGCGGCCGGAATTCGTCGACTGGATCCGGTACCGAGGAGATCTGCC
 GCC**CGCATCGCC**

ATGGCCGAGAAGCGAAGGGGCTCGCCGTGCAGCATGCTAAGCCTCAAGGCGCACGCTTCTCGTGGAGG
 CGCTGATCGGCGCCGAGAAGCAGCAACAGCTTTCAGAAGAAGCGGCGAAAAGTGGGCGCCGAGAGCGGC
 GAGGGCCGTGGACGACGAGGCTGCAGCCGCGGCGGCGGCGGCGAAAAGGGTCTTCTGAGGGAGAC
 GAAGGCGCTGCGCTCCCGCCCGGCTGGGGCGACGTCTGGCCGGCTCGGAGTGGCGCAGACCTGGAGC
 GCGGAGCCGCGGCGGCTGTGAGGACGGCTTCCAGCAGGAGCTTCCCCTCTGGCGTACCAGGGAGGCTC
 CCCAAGGGTCTCCGGCGCGCTCCCTGGCCCGCCGGACCCTCTGCCCTCGCCGAGGCCCCGCGG
 GTGGATCTGCAGGAGCCGAGCTCTGGAAGCGCTTTCATGAGATAGGCACTGAGATGATCATACCAAGG
 CCGGACGGCGCATGTTCCAGCAATGAGAGTGAAGATCTCTGGATTAGATCCTCACCAGCAATATTACAT
 TGCCATGGATATTGTACCAGTGGACAACAAAAGATACAGGTATGTTTACCACAGTTCGAAATGGATGGTG
 GCAGGTAATGCTGACTCGCCTGTGCCACCCGTGTGTACATTCATCCAGACTCGCCTGCCTCGGGGAGA
 CTTGGATGAGACAAGTTATCAGCTTCGACAAGCTGAAGCTCACCAACAATGAACTGGATGACCAAGGCCA
 TATTATTCTTCTATGCACAAATACCAACCGGAGTGCACGTATCCGTAAGACTGTGGAGACGAT
 CTTTCTCCCATCAAGCCTGTTCCATCCGGGAGGGAGTAAAGGCATTCTCCTTCCAGAACTGTCTTCA
 CAACCGTCACTGCCTATCAGAATCAGCAGATTACTCGCCTGAAGATAGATAGGAATCCATTTGCTAAAGG
 CTTCCGAGACTCCGGGCGCAACAGAATGGGTTTGAAGCCTTGGTGAATCATATGCATTCTGGCGACCA
 TCACTACGGACTCTGACCTTTGAAGATATCCCTGGAATCCCAAGCAAGGCAATGCAAGTCTCCACCT
 TGCTCCAAGTACTGGGAATGGCGTTCCTGCCACTCACCTCACCTTTTGTCTGGCTCCTCTTGGCTC
 TCCTGCCTTCCATCTGGGGCCCAACACCAGCAGCTGTGTAGTCTGGCCCTGCTGACTATTCTGCCTGT
 GCCCGCTCAGGCCTCACCTCAACCGATACAGCACATCTTTGGCAGAGACCTACAACAGGCTCACCAACC
 AGGCTGGTGGACCTTTGCCCGCCAGGACTCCCTCCTATGTGGGCGTGGAGCAGCAGCCTCCGTGAA
 CATGTCCATGGGTGGCACTGATGGGACACCTCAGCTGCCACAGACCAGCTTATCCATGCAGATTTG
 GGAATGTCCCCCAGCTCCAGTATATCATGCCATCACCTCCAGCAATGCCTTCGCCACTAACAGACCC
 ATCAGGGTTCCTATAACTTTTAGATTACACAGCCCCTGTGCACTATATGGATAAATCTCCACATC
 CCCCAACTGGTCCAGTCTGAGAAAATGTTTCTTCCAAGGAAGTTTCTGGGGTCTCCAGGAGT
 GGGACCATGACGGATCGGCAGATGTTGCCCTGTGGAAGGAGTGCACCTGCTTAGCAGTGGGGTCAAGC
 AGAGTTTCTTACTCTAGGACCCTAGGAAGCTTAACTCTGTCATCATCTCAAGTATCTGCACATATGGT
 C

ACGCGTACGCGGCCGCTCGAGCAGAACTCATCTCAGAAGAGGATCTGGCAGCAATGATATCCTGGATT
 ACAAGGATGACGACGATAAGGTTTAA

Protein Sequence:

>RC211838 representing NM_001080508
 Red=Cloning site Green=Tags(s)

MAEKRRGSPCSMLSLKAHAFSVEALIGAELKQQQLQKRRRKLGAEEAARAVDDGGCSRGGGAGEKGSSEGD
 EGAALPPPAGATSGPARSGADLERGAAGGEDGFQQGASPLASPGGSPKSPARSLARPGTLPSPQAPR
 VDLQGAELWKRFEHIGTEMIITKAGRRMFPAMRVKISGLDPHQYYIAMDIVPVDNKRYYVYHSSKWMV
 AGNADSPVPPRVYIHPDSPASGETWMRQVISFDKLLKLNELDDQGHIIILHSMHKYQPRVHVIRKDCGDD
 LSPKIPVPSGEGVKAFSFPETVFTTVTAYQNQITRLKIDRNPFAGFRDSGRNRMGLEALVESYAFWRP
 SLRSLTFEDIPGIPKQGNASSSTLLQGTGNGVPATHPHLLSGSSCSPAFHLGPNTSQLCSLAPADYSAC
 ARSGLTLNRYSTSLAETYNRLTNQAGETFAAPPRTPSYVGVSSSTSVNMSMGGTDGDTFSCPQTSLSMQIS
 GMSPQLQYIMPSPSSNAFATNQTHQGSYNTFRLHSPCALYGFNFSTSPKLAASPEKIVSSQGSFLGSSPS
 GTMTDRQMLPPVEGVHLLSSGGQSFSDSRTLGSLLSSSQVSAHVM

TRTRPLEQKLISEEDLAANDILDYKDDDDKV

Chromatograms: https://cdn.origene.com/chromatograms/mg3231_g01.zip
Restriction Sites: SgfI-MluI
Cloning Scheme:



ACCN: NM_001080508
ORF Size: 1821 bp

OTI Disclaimer: The molecular sequence of this clone aligns with the gene accession number as a point of reference only. However, individual transcript sequences of the same gene can differ through naturally occurring variations (e.g. polymorphisms), each with its own valid existence. This clone is substantially in agreement with the reference, but a complete review of all prevailing variants is recommended prior to use. [More info](#)

OTI Annotation: This clone was engineered to express the complete ORF with an expression tag. Expression varies depending on the nature of the gene.

Components: The ORF clone is ion-exchange column purified and shipped in a 2D barcoded Matrix tube containing 10ug of transfection-ready, dried plasmid DNA (reconstitute with 100 ul of water).

- Reconstitution Method:**
 1. Centrifuge at 5,000xg for 5min.
 2. Carefully open the tube and add 100ul of sterile water to dissolve the DNA.
 3. Close the tube and incubate for 10 minutes at room temperature.
 4. Briefly vortex the tube and then do a quick spin (less than 5000xg) to concentrate the liquid at the bottom.
 5. Store the suspended plasmid at -20°C. The DNA is stable for at least one year from date of shipping when stored at -20°C.

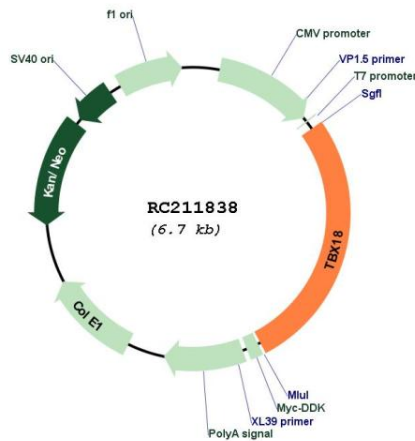
Note: Plasmids are not sterile. For experiments where strict sterility is required, filtration with 0.22um filter is required.

RefSeq: [NM_001080508.3](#)
RefSeq Size: 4070 bp

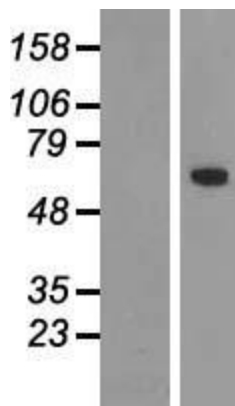
RefSeq ORF: 1824 bp
Locus ID: 9096
UniProt ID: [O95935](#)
Cytogenetics: 6q14.3
MW: 64.6 kDa

Gene Summary: This genes codes for a member of an evolutionarily conserved family of transcription factors that plays a crucial role in embryonic development. The family is characterized by the presence of the DNA-binding T-box domain and is divided into five sub-families based on sequence conservation in this domain. The encoded protein belongs to the vertebrate specific Tbx1 sub-family. The protein acts as a transcriptional repressor by antagonizing transcriptional activators in the T-box family. The protein forms homo- or heterodimers with other transcription factors of the T-box family or other transcription factors. [provided by RefSeq, Nov 2012]

Product images:



Circular map for RC211838



Western blot validation of overexpression lysate (Cat# [LY421063]) using anti-DDK antibody (Cat# [TA50011-100]). Left: Cell lysates from untransfected HEK293T cells; Right: Cell lysates from HEK293T cells transfected with RC211838 using transfection reagent MegaTran 2.0 (Cat# [TT210002]).