

Product datasheet for **RC211836**

ABHD16B (NM_080622) Human Tagged ORF Clone

Product data:

Product Type:	Expression Plasmids
Product Name:	ABHD16B (NM_080622) Human Tagged ORF Clone
Tag:	Myc-DDK
Symbol:	ABHD16B
Synonyms:	C20orf135; dj591C20.1
Mammalian Cell Selection:	Neomycin
Vector:	pCMV6-Entry (PS100001)
E. coli Selection:	Kanamycin (25 ug/mL)



[View online »](#)

ORF Nucleotide Sequence:

>RC211836 representing NM_080622
 Red=Cloning site Blue=ORF Green=Tags(s)

TTTTGTAATACGACTCACTATAGGGCGGCCGGAATTCGTCGACTGGATCCGGTACCGAGGAGATCTGCC
 GCC**GCGATCGCC**

ATGTGCGTCATCTGCTTCGTGAAGGCGCTGGTGC GCGTGTCAAGATCTACCTGACCGCCAGCTACACCT
 ACCCATTCCGCGGCTGGCCCGTGGCCTTCGCTGGGATGACGTGCGCGCGTGGCCGGAGCAGCAGCCA
 CCGGGCGCTGACCTGCGCGGCAGCCGCGCGGGCGTGTGGTTGCTGCGGGACGAGACGCTGGCGGGGAT
 GCGCTGGGGCGCCTCCACGTGGGGCGCGCAGCCAGGCGCAGTGCCTCTTGCAGCAGCTCCGCGAGCTGC
 CCGCCAGCTCGTAGCTACGCGCTGGCCACTCGCTGGCCGCTGGCTCGTGTACCCCGCTCCGTGTC
 CCTGATGACGCGCGCTGCTGCCGCTGCTGCAGCAGGGCCAAGAGCGCCTCGTGGAGCGCTACCACGGC
 CGGCGCGCAAGCTGGTGGCCTGTGACGGCAACGAGATCGACACTATGTTATGGACCGCCGACAGCACC
 CGGGCAGCCACGTGCACGGCCGCGCCTCGTATCTGCTGCGAAGGCAACGCGGGCTTCTACGAGATGGG
 CTGTCTGTCTGCACCGCTCGAGGCGGCTACTCCGTGCTGGGCTGGAACCACCCCGCTTCGGCAGCAGC
 ACTGGCGTGCCCTTCCCTCAGCAGCAGCCAACGCCATGGACGTGGTGGTGGAGTACGCACTGCACCGCC
 TGCACTTCCCGCCGCGCACCTGGTGGTCTACGGCTGGTCTGTTGGCGGCTTACGGCCACCTGGGCCAC
 CATGACCTACCCGGAGCTGGGTGCACTGGTGTGGACGCCACCTTCGACGACCTTGTGCCGCTGGCGCTG
 AAGGTCATGCCCCACAGTTGGAAGGGGCTGGTGGTGGCACCCTGCGCGAGCACTTCAACCTCAACGTGG
 CCGAGCAGCTGTGCTGTACCCGGGGCCGGTGTGCTGCTCCGACGCACGAGGATGACGTGGTCAAGCAC
 TTCGGGCCGCTGCGCCCCGTGACCTGGTGAAGGGCAACCGGGCAATGAGCTGCTGCTGCGC
 CTGCTGGAGCACCCTACCCGTCGTGATGGCGGAGAGGGCCGCGCCGCTCGTACCCGCTGGCTGGCGC
 CTGGCAGCTTGGCGCAGGAGGCCCTTCTATGCACGCTACCGCTGGACGAGGACTGGTGCCTGGCGC
 GCTGCGCTCCTACCGTGACGCTGCGAAGAGGAGCTGGAGGGCGAGGAGGCCCTGGGGCCACAGGACCC
 GCCTTCCCATGGCTGGTGGGCCAGGCGCTGAGCTCGCGCGCGCGCCGGCCCTCGCACTGTTCTGGCTC
 GGAAGCACCTCAAGAACGTGGAGGCGACTCACTTCAGCCCTCTGGAGCCTGAGGAGTTTCAAGTTGCCCTG
 GCGGCTG

ACGCGTACGCGGCCGCTCGAGCAGAACTCATCTCAGAAGAGGATCTGGCAGCAATGATATCTGGATT
 ACAAGGATGACGACGATAAGGTTTAA

Protein Sequence:

>RC211836 representing NM_080622
 Red=Cloning site Green=Tags(s)

MCVICFVKALVRVFKIYLTASYTYPFGRWPVAFRWDVRAVGRSSSHRALTCAAAAAGVWLLRDETLLGGD
 ALGRPPRGARSQAQCLLQQLRELPGQLASYALAHSLGRWLVYPGSVSLMTRALLPLLQGGQERLVERYHG
 RRAKLVACDNEIDTMFMDRRQHPGSHVHGPRLVICCEGNAGFYEMGCLSAPLEAGYSVLGWNHPGFSS
 TGVPFPQHDANAMDVVVEYALHRLHFPPAHLVYVGWSVGGFTATWATMTYPELGALVLDATFDDLVLPLAL
 KVMPHSWKGLVVRTVREHFNLNVAEQLCCYPGPVLLLRRRTQDDVVSTSGRLRPLSPGDVEGNRGNELLLR
 LLEHRYPVVMAREGRAVVTRWLRAGSLAQEAIFYARYRVEDWCLALLRSYRARCEEELEGEALGPHGP
 AFPWLVGQGLSSRRRRRLALFLARKHLKNVEATHFSPLEPEEFQLPWRL

TRTRPLEQKLISEEDLAANDILDYKDDDDKV

Chromatograms:

https://cdn.origene.com/chromatograms/mk8025_d02.zip

Restriction Sites:

Sgfl-Mlul

Cloning Scheme:


ACCN: NM_080622

ORF Size: 1407 bp

OTI Disclaimer: The molecular sequence of this clone aligns with the gene accession number as a point of reference only. However, individual transcript sequences of the same gene can differ through naturally occurring variations (e.g. polymorphisms), each with its own valid existence. This clone is substantially in agreement with the reference, but a complete review of all prevailing variants is recommended prior to use. [More info](#)

OTI Annotation: This clone was engineered to express the complete ORF with an expression tag. Expression varies depending on the nature of the gene.

Components: The ORF clone is ion-exchange column purified and shipped in a 2D barcoded Matrix tube containing 10ug of transfection-ready, dried plasmid DNA (reconstitute with 100 ul of water).

Reconstitution Method:

1. Centrifuge at 5,000xg for 5min.
2. Carefully open the tube and add 100ul of sterile water to dissolve the DNA.
3. Close the tube and incubate for 10 minutes at room temperature.
4. Briefly vortex the tube and then do a quick spin (less than 5000xg) to concentrate the liquid at the bottom.
5. Store the suspended plasmid at -20°C. The DNA is stable for at least one year from date of shipping when stored at -20°C.

Note: Plasmids are not sterile. For experiments where strict sterility is required, filtration with 0.22um filter is required.

RefSeq: [NM_080622.4](#)

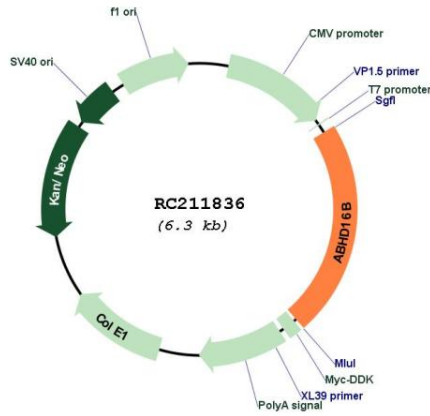
RefSeq Size: 1791 bp

RefSeq ORF: 1410 bp

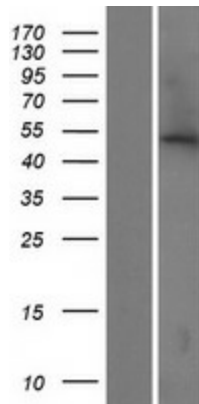
Locus ID: 140701

UniProt ID: [Q9H3Z7](#)
 Cytogenetics: 20q13.33
 MW: 52.4 kDa

Product images:



Circular map for RC211836



Western blot validation of overexpression lysate (Cat# [LY409161]) using anti-DDK antibody (Cat# [TA50011-100]). Left: Cell lysates from untransfected HEK293T cells; Right: Cell lysates from HEK293T cells transfected with RC211836 using transfection reagent MegaTran 2.0 (Cat# [TT210002]).