

## Product datasheet for **RC211832**

### Rho GTPase activating protein 24 (ARHGAP24) (NM\_001025616) Human Tagged ORF Clone

#### Product data:

Product Type:	Expression Plasmids
Product Name:	Rho GTPase activating protein 24 (ARHGAP24) (NM_001025616) Human Tagged ORF Clone
Tag:	Myc-DDK
Symbol:	Rho GTPase activating protein 24
Synonyms:	FILGAP; p73; p73RhoGAP; RC-GAP72; RCGAP72
Mammalian Cell Selection:	Neomycin
Vector:	pCMV6-Entry (PS100001)
E. coli Selection:	Kanamycin (25 ug/mL)



[View online »](#)

**ORF Nucleotide Sequence:**

>RC211832 representing NM\_001025616  
 Red=Cloning site Blue=ORF Green=Tags(s)

TTTTGTAATACGACTCACTATAGGGCGGCCGGAATTCGTCGACTGGATCCGGTACCGAGGAGATCTGCC  
 GCC**CGGATCGCC**

ATGGAGGAGAACAATGACTCCACGGAGAACCCCAACAAGGCCAAGGGCGCAGAATGCCATCAAGTGTG  
 GGTGGCTGAGGAAGCAAGGAGGCTTTGTCAAGACTTGGCATACTCGCTGGTTTGTGCTCAAGGGGATCA  
 GCTCTATTATTTCAAAGATGAAGATGAAACCAAGCCCTTGGGTACTATTTTTCTGCCTGGAATAAAGTT  
 TCTGAGCATCCCTGCAATGAAGAGAACCAGGGAAGTTCCTTTTTGAAGTAGTCCAGGAGGCGATCGAG  
 ATCGGATGACAGCAAATCATGAAAGCTACCTCCTCATGGCAAGCACCCAGAATGATATGGAAGACTGGGT  
 GAAGTCAATCCGCCGAGTCATATGGGGACCTTTCGGAGGAGGCATTTTTGGACAGAACTGGAGGATACT  
 GTTCGTTATGAGAAGAGATATGGGAACCGTCTGGCTCCGATGTTGGTGGAGCAGTGGTGGACTTTATCC  
 GACAAAGGGGGCTGAAAGAAGAGGGTCTTTTCGACTGCCAGGCCAGGCTAATCTTGTTAAGGAGCTCCA  
 AGATGCCCTTGGACTGTGGGGAGAAGCCATCATTTGACAGCAACACAGATGTACACACGGTGGCATCACTT  
 CTTAAGCTGTACCTCCGAGAACTCCAGAACCAGTTATTCCTTATGCGAAGTATGAAGATTTTTTGTTCAT  
 GTGCCAAACTGCTCAGCAAGGAAGGAAGCAGGTGTTAAGGAATTAGCAAAGCAGGTGAAGAGTTTGCC  
 AGTGGTAAATTACAACCTCCTCAAGTATATTTGCAGATTCTTGGATGAAGTACAGTCCACTCGGGAGTT  
 AACAAAATGAGTGTGCGAAGCTTGGCAACGGTCTTTGGTCTAATATCCTGCGCCCCAAAGTGAAGATC  
 CTTTGACTATCATGGAGGGCACTGTGGTGGTCCAGCAGTTGATGTCAGTGATGATTAGCAAACATGATTG  
 CCTTTTCCCAAAGATGCAGAACTACAAGCAAGCCCCAAGATGGAGTGAGCAACAACAATGAAATTCAG  
 AAGAAAGCCACCATGGGGCAGTTACAGAACAAGGAGAACAATAACACCAAGGACAGCCCTAGTAGGCAGT  
 GCTCCTGGGACAAGTCTGAGTCACCCCAGAGAAGCAGCATGAACAATGGATCCCCACAGCTCTATCAGG  
 CAGCAAAAACCAACAGCCCAAGAACAGTGTTCACAAGCTAGATGTGTCTAGAAGCCCCCTCTCATGGTC  
 AAAAAGAACCAGCCTTTAATAAGGGTAGTGGGATAGTTACCAATGGGTCTTCAGCAGCAGTAATGCAG  
 AAGGTCTTGAGAAAACCCAAACCACCCCAATGGGAGCCTACAGGCCAGAAGGAGCTCTTCACTGAAGGT  
 ATCTGGTACCAAAATGGGCACGCACAGTGTACAGAATGGAACGGTGCATGGGCATTTTGAACAGCGAC  
 AACTCGGGAACCCACAATGTTGAAACATGAGCTGGCTGCCAAATGGCTATGTACCCTGAGGGATA  
 ACAAGCAGAAAGAACAAGCTGGAGAGTTAGGCCAGCACACAGACTGTCCACCTATGATAATGTCCATCA  
 ACAGTTCTCCATGATGAACCTTGATGACAAGCAGAGCATTGACAGTGCTACCTGGTCCACTTCTCCTGT  
 GAAATCTCCCTCCCTGAGAACTCCAACCTGTGCTCTTCTACCACCCTGCCAGAGCAAGACTTTT  
 TTGGGGGGAACCTTGAGGACCCTGTTTTGGATGGGCCCCCGCAGGACGACCTTCCACCCAGGGACTA  
 TGAAAGCAAAAAGTGACCACAGGAGTGTGGGAGGTGGAAGTAGTCGTGCCACCAGTAGCAGTGACAACAGT  
 GAGACATTTGTGGGAACAGCAGCAGCAACCACAGTGCAGTGCACAGTTTGTTCAGCCTGAAACAGG  
 AAATGACCAAAACAGAAGATAGAGTATGAGTCCAGGATAAAGAGCTTAGAACAGCGAAACTTGACTTTGGA  
 AACAGAAATGATGAGCCTCCATGATGAAGTGGATCAGGAGAGGAAAAAGTTCACAATGATAGAAATAAAA  
 ATGCGAAATGCCGAGCGAGCAAAAAGAAGATGCCGAGAAAAAGAAATGACATGCTACAGAAAGAAATGGAGC  
 AGTTTTTTTCCACGTTTGGAGAAGTACAGTGGAAACCCAGGAGAACCCGAGAGAGGAAACACAATATGGAT  
 TCAG

**ACGCGT**ACGCGGCCGCTCGAGCAGAAACTCATCTCAGAAGAGGATCTGGCAGCAAATGATATCCTGGATT  
 ACAAGGATGACGACGATAAGGTTTAA

**Protein Sequence:** >RC211832 representing NM\_001025616  
Red=Cloning site Green=Tags(s)

```
MEENNDSTENPQQGGRQNAIKCGLWRKQGGFVKTWHTRWFLVKGQDLYYFKDEDETKPLGTIFLPGNKV
SEHPCNEENPGKFLFEVVPGGDRDRMTANHESYLLMASTQNDMEDVWKSIRRVIWGPFGGGIFGQKLEDT
VRYEKRYGNRLAPMLVEQCVDVIRQRGLKEEGLFRLPGQANLVKELQDAFDCGKPSFSDSNTDVHTVASL
LKL YLRELPEPVIPYAKYEDFLSCAKLLSKEEEAGVKELAKQVKS LPPVNYNLLKYICRFLDEVQSYSGV
NKMSVQNLA TVFGPNILRPKVEDPLTIMEGTVVVQQLMSVMISKHDCLFPKDAELQSKPQDGVSNNEIQ
KKATMGQLQNKENNNTKDSRQCSWDKSESPQRSMMNGSPTALSGSKTNSPKNSVHKLDVSRSPPLMV
KKNPAFNKSGSIVTNGSFSSSNAEGLEKTQTPNGSLQARRSSSLKVS GTKMGTHSVQNGTVRMGILNSD
TLGNPTNVRNMSWLPNGYVTLRDNKQEQAGELGQHNRLSTYDNVHQQFSMMNLDDKQSIDSATWSTSSC
EISLPENSNSCRSSTTTCPEDFFGGNFEDPVLDPGPPQDDL SHPRDYESKSDHRSVGGRSSRATSSSDNS
ETFVGNSSNHSALHSLVSSLKQEMTKQKIEYESRIKSLEQRNL TLETEMMSLHDEL DQERKKFTMIEIK
MRNAERAKEDA EKRNDMLQKEME QFFSTFGELTVEPRRTERGNTIWIQ
```

TRTRPLEQKLI SEEDLAANDILDYKDDDDKV

**Chromatograms:** [https://cdn.origene.com/chromatograms/mk8025\\_b02.zip](https://cdn.origene.com/chromatograms/mk8025_b02.zip)

**Restriction Sites:** Sgfl-MluI

**Cloning Scheme:**



\* The last codon before the Stop codon of the ORF

**ACCN:** NM\_001025616

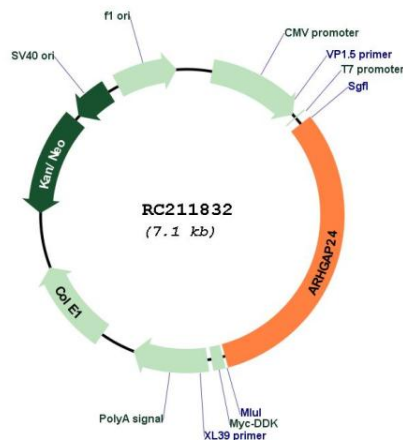
**ORF Size:** 2244 bp

**OTI Disclaimer:** The molecular sequence of this clone aligns with the gene accession number as a point of reference only. However, individual transcript sequences of the same gene can differ through naturally occurring variations (e.g. polymorphisms), each with its own valid existence. This clone is substantially in agreement with the reference, but a complete review of all prevailing variants is recommended prior to use. [More info](#)

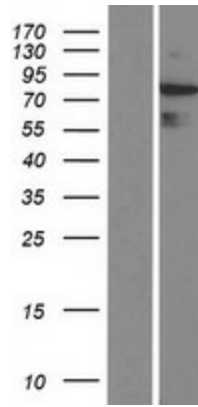
**OTI Annotation:** This clone was engineered to express the complete ORF with an expression tag. Expression varies depending on the nature of the gene.

<b>Components:</b>	The ORF clone is ion-exchange column purified and shipped in a 2D barcoded Matrix tube containing 10ug of transfection-ready, dried plasmid DNA (reconstitute with 100 ul of water).
<b>Reconstitution Method:</b>	<ol style="list-style-type: none"> <li>1. Centrifuge at 5,000xg for 5min.</li> <li>2. Carefully open the tube and add 100ul of sterile water to dissolve the DNA.</li> <li>3. Close the tube and incubate for 10 minutes at room temperature.</li> <li>4. Briefly vortex the tube and then do a quick spin (less than 5000xg) to concentrate the liquid at the bottom.</li> <li>5. Store the suspended plasmid at -20°C. The DNA is stable for at least one year from date of shipping when stored at -20°C.</li> </ol>
<b>RefSeq:</b>	<u>NM_001025616.3</u>
<b>RefSeq Size:</b>	2936 bp
<b>RefSeq ORF:</b>	2247 bp
<b>Locus ID:</b>	83478
<b>UniProt ID:</b>	<u>Q8N264</u>
<b>Cytogenetics:</b>	4q21.23-q21.3
<b>MW:</b>	84.1 kDa
<b>Gene Summary:</b>	This gene encodes a Rho-GTPase activating protein, which is specific for the small GTPase family member Rac. Binding of the encoded protein by filamin A targets it to sites of membrane protrusion, where it antagonizes Rac. This results in suppression of lamellae formation and promotion of retraction to regulate cell polarity. Alternative splicing results in multiple transcript variants. [provided by RefSeq, Sep 2016]

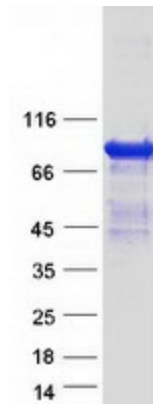
**Product images:**



Circular map for RC211832



Western blot validation of overexpression lysate (Cat# [LY422457]) using anti-DDK antibody (Cat# [TA50011-100]). Left: Cell lysates from untransfected HEK293T cells; Right: Cell lysates from HEK293T cells transfected with RC211832 using transfection reagent MegaTran 2.0 (Cat# [TT210002]).



Coomassie blue staining of purified ARHGAP24 protein (Cat# [TP311832]). The protein was produced from HEK293T cells transfected with ARHGAP24 cDNA clone (Cat# RC211832) using MegaTran 2.0 (Cat# [TT210002]).