

Product datasheet for **RC211824**

GRK7 (NM_139209) Human Tagged ORF Clone

Product data:

Product Type:	Expression Plasmids
Product Name:	GRK7 (NM_139209) Human Tagged ORF Clone
Tag:	Myc-DDK
Symbol:	GRK7
Synonyms:	GPRK7
Mammalian Cell Selection:	Neomycin
Vector:	pCMV6-Entry (PS100001)
E. coli Selection:	Kanamycin (25 ug/mL)



[View online »](#)

ORF Nucleotide Sequence:

>RC211824 representing NM_139209
 Red=Cloning site Blue=ORF Green=Tags(s)

TTTTGTAATACGACTCACTATAGGGCGGCCGGGAATTCGTCGACTGGATCCGGTACCGAGGAGATCTGCC
 GCC**CGCATCGCC**

ATGGTGGACATGGGGCCCTGGACAACCTGATCGCCAACACCCGCTACCTGCAGGCCCGGAAGCCCTCGG
 ACTGCGACAGCAAAGAGCTGCAGCGGCGCGCGTAGCCTGGCCCTGCCCGGCTGCAGGGCTGCGCGGA
 GCTCCGCCAGAAGCTGTCCCTGAACTTCCACAGCCTGTGTGAGCAGCAGCCCATCGGTCGCCCTCTTC
 CGTGACTTCTAGCCACAGTGCCACGTTCCGCAAGGCGGCAACCTTCTAGAGGACGTGCAGAAGTGGG
 AGCTGGCCGAGGAGGCCACCAAGACAGCGCGCTGCAGGGGCTGGTGGCCACTTGTGCGAGTCCCC
 TGCCCCGGGAACCCGCAACCTTCTCAGCCAGGCGTGGCCACCAAGTCCAAGCAGCCACCCTGAG
 GAAGAGCGAGTGGCTGCAGTGACGCTGGCAAGGCTGAGGCCATGGCTTCTTGAAGAGCAGCCCTTTA
 AGGATTCGTGACCAGCGCTTCTACGACAAGTTCTGCAGTGGAACTTCTCGAGATGCAACCAGTGTG
 AGACAAGTACTTCACTGAGTTCAGAGTGTGGGAAAGTGGTTTGGGGAGGTATGTGCCGTCCAGGTG
 AAAAAGCTGGGAAGATGTATGCCTGTAAGAACTGGACAAGAAGCGGCTGAAGAAGAAAGTGGCGAGA
 AGATGGCTCTCTTGGAAAAGGAAATCTTGGAGAAGGTCAGCAGCCCTTTCATTGTCTCTTGGCCTATGC
 CTTTGAGAGCAAGACCCATCTCTGCCTTGTGATGAGCCTGATGAATGGGGGAGACCTCAAGTTCCACATC
 TACAACGTGGGCACGCGTGGCCTGGACATGAGCCGGGTGATCTTTACTCGGCCAGATAGCCTGTGGGA
 TGCTGCACCTCCATGAACTCGGCATCGTCTATCGGGACATGAAGCCTGAGAATGTGCTTCTGGATGACCT
 CGGCAACTGCAGTTATCTGACCTGGGGCTGGCGTGGAGATGAAGGGTGGCAAGCCCATACCCAGAGG
 GCTGGAACCAATGGTTACATGGCTCTGAGATCCTAATGGAAAAGTAAGTTATTCCTATCTGTGGAT
 GGTGGCCATGGGATGCAGCATTTATGAAATGGTTGCTGGACGAAACACCATTCAAAGATTACAAGGAAAA
 GGTCAGTAAAGAGGATCTGAAGCAAAGAACTCTGCAAGACGAGGTCAAATTCAGCATGATAAATTCACA
 GAGGAAGCAAAAGATATTTGAGGCTCTTCTTGGCTAAGAAACCAGAGCAACGCTTAGGAAGCAGAGAAA
 AGTCTGATGATCCAGGAAACATCATTTCTTAAACGATCAACTTCTCGCCTGGAAGCTGGCCTAAT
 TGAACCCCATTTGTGCCAGACCCTTCAAGTGGTTATGCCAAAGACATCGCTGAAATTGATGATTTCTCT
 GAGGTTCCGGGGGTGGAATTTGATGACAAAGATAAGCAGTTCTTCAAAAACCTTTCGACAGGTGCTGTT
 CTATAGCATGGCAGGAAGAAATTATAGAAACGGGACTGTTTGAGGAACTGAATGACCCCAACAGACCTAC
 GGGTTGTGAGGAGGTAATTCATCAAGTCTGGCGTGTGTTTGTATTG

AG**CGGACCG**ACGCGTACGCGGCCGCTCGAGCAGAACTCATCTCAGAAGAGGATCTGGCAGCAAATGATATCC
 TGGATTACAAGGATGACGACGATAAGGTTAA

Protein Sequence:

>RC211824 representing NM_139209
 Red=Cloning site Green=Tags(s)

MVDMGALDNLIANAYLQARKPSDCDSKELQRRRRSLALPGLQGCAELRQKLSLNFHSLCEQQPIGRRLF
 RDFLATVPTFRKAATFLEDVQNWELAEEGPTKDSALQGLVATCASAPAGNPQPFLSQAVATKCCQAATTE
 EERVAAVTLAKAEAMAFLEQPFKDFVTSFADYDKFLQWKLQFEMQPVSDKYFTEFRVLGKGGFGEVCAVQV
 KNTGKMYACKKLDKKRLKKKGGEKMALLEKEILEKVSSPFIIVSLAYAFESKTHLCLVMSLMNGGDLKFHI
 YNVGTRGLDMSRVIFYSAQIACGMLHLHELGIYVYRDMKPENVLLDDLGNCRSLDLGLAVEMKGGKPIQR
 AGTNGYMAPEILMEKVSYSYPVDWFAAGCSIYEMVAGRTPFKDYKEKVSKEKDLQRTLQDEVKQHDNFT
 EEAKDICRFLAKKPEQRLGSREKSDDPKHHFFKTIINFPRLEAGLIEPPFVDPSPVYAKDIAEIDDFS
 EVRGVEFDDKDKQFFKNFATGAVPIAWQEIIETGLFEELNDPNRPTGCEEGNSSKSGVCLLL

SGP**TRRRLEQKLI**SEEDLAANDILDYKDDDDKV

Chromatograms:

https://cdn.origene.com/chromatograms/mk8012_c08.zip

Restriction Sites:

Sgfl-RsrII

Cloning Scheme:


ACCN: NM_139209

ORF Size: 1659 bp

OTI Disclaimer: The molecular sequence of this clone aligns with the gene accession number as a point of reference only. However, individual transcript sequences of the same gene can differ through naturally occurring variations (e.g. polymorphisms), each with its own valid existence. This clone is substantially in agreement with the reference, but a complete review of all prevailing variants is recommended prior to use. [More info](#)

OTI Annotation: This clone was engineered to express the complete ORF with an expression tag. Expression varies depending on the nature of the gene.

Components: The ORF clone is ion-exchange column purified and shipped in a 2D barcoded Matrix tube containing 10ug of transfection-ready, dried plasmid DNA (reconstitute with 100 ul of water).

Reconstitution Method:

1. Centrifuge at 5,000xg for 5min.
2. Carefully open the tube and add 100ul of sterile water to dissolve the DNA.
3. Close the tube and incubate for 10 minutes at room temperature.
4. Briefly vortex the tube and then do a quick spin (less than 5000xg) to concentrate the liquid at the bottom.
5. Store the suspended plasmid at -20°C. The DNA is stable for at least one year from date of shipping when stored at -20°C.

RefSeq: [NM_139209.2](#), [NP_631948.1](#)

RefSeq Size: 1746 bp

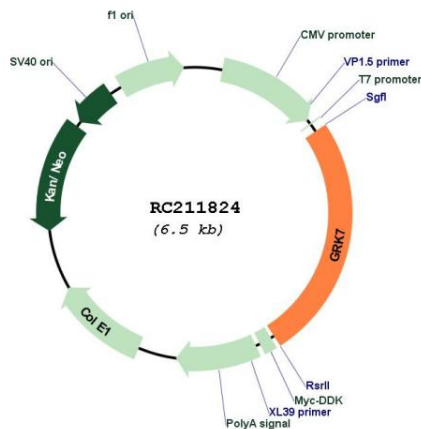
RefSeq ORF: 1662 bp

Locus ID: 131890

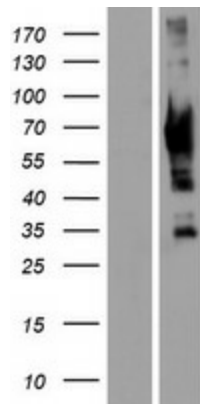
UniProt ID: [Q8WTQ7](#)

Cytogenetics: 3q23
Protein Families: Druggable Genome, Protein Kinase
Protein Pathways: Chemokine signaling pathway, Endocytosis
MW: 62 kDa
Gene Summary: This gene encodes a member of the guanine nucleotide-binding protein (G protein)-coupled receptor kinase subfamily of the Ser/Thr protein kinase family. It is specifically expressed in the retina and the encoded protein has been shown to phosphorylate cone opsins and initiate their deactivation. [provided by RefSeq, Jul 2008]

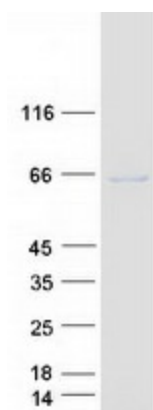
Product images:



Circular map for RC211824



Western blot validation of overexpression lysate (Cat# [LY408355]) using anti-DDK antibody (Cat# [TA50011-100]). Left: Cell lysates from untransfected HEK293T cells; Right: Cell lysates from HEK293T cells transfected with RC211824 using transfection reagent MegaTran 2.0 (Cat# [TT210002]).



Coomassie blue staining of purified GRK7 protein (Cat# [TP311824]). The protein was produced from HEK293T cells transfected with GRK7 cDNA clone (Cat# RC211824) using MegaTran 2.0 (Cat# [TT210002]).