

## Product datasheet for RC211823

### ANKS1B (NM\_152788) Human Tagged ORF Clone

#### Product data:

**Product Type:** Expression Plasmids  
**Product Name:** ANKS1B (NM\_152788) Human Tagged ORF Clone  
**Tag:** Myc-DDK  
**Symbol:** ANKS1B  
**Synonyms:** AIDA; AIDA-1; ANKS2; cajalin-2; EB-1; EB1  
**Mammalian Cell Selection:** Neomycin  
**Vector:** pCMV6-Entry (PS100001)  
**E. coli Selection:** Kanamycin (25 ug/mL)  
**ORF Nucleotide Sequence:** >RC211823 representing NM\_152788  
Red=Cloning site Blue=ORF Green=Tags(s)

TTTTGTAATACGACTCACTATAGGGCGGCCGGAATTCGTCGACTGGATCCGGTACCGAGGAGATCTGCC  
GCC**CGATCGCC**

ATGGGGAAGGACCAGGAGCTGCTGGAAGCTGCTCGCACTGGAATGTGGCTCTGGTGGAGAACTCCTGT  
CTGGCAGGAAAGGAGGGATCCTGGGCGTGGATCCGGACCCCTGCCCTGTCTAATCTGCTAAGCATCTG  
GCGAGGCCCAATGTGAAGTGCACAGACAGTTCGGTTACTGCTTTACACCACGCAGCCTTAAATGGA  
CATAAGGCATAGTTCTCAAACACTTTCAGTATGAGGCATCAACAATGTAGCAGACAACAAGGGTATT  
TTCCTATTCACCTGGCTGCCTGGAAGGAGATGTGAAATGTGAAGATTCTTATTCATCATGGACCATC  
ACATTCAGGGTCAATGAACAGACAATGAAAATGAAACTGCCCTACACTGTGCAGCTCAATATGGACAC  
TCAGAAGTAGTTGCTGTTCTCCTAGAAGAGCTCACTGACCCGACAATTAGAAATAGCAAGCTGGAACAC  
CTTTGGACTTGGCGCACTCTACGGACGGCTTAGAGTGGTAAAAATGATCATCAGTGCACATCCTAACTT  
AATGAGCTGCAACACTCGCAAGCACAGCCACTTACCTTGTGCGCGCAATGGCCACAAAGCAGTCGTG  
CAGGTGCTGCTGGAGGCAGGAATGGATGTGAGCTGTCAAACAGAAAAGGGAGTGCACCTTCAAGAGCAG  
CTTTGTTGGAAAGGTGGATGTTGTACGAGTCTGTTAGAAACAGGAATTGATGCCAACATAAAGGATAG  
CTTAGGTAGAAGTGTCTGGACATTCTGAAAGAACATCCATCTCAGAAATCTCCTCAGATTGCAACACTC  
TTACAAGAGTATTTAGAAGGCGTGGGAAGATCTACAGTCTCGAAGAGCCTGTACAGGAAGATGCAACAC  
AAGAAACACACATTTCTCTCTGTTGAGTCTCCTTCCCAAAGACCAAAGTGAACCGTCACTGGAGA  
ATTATCAAACCTTTGGATGAAATAAACTCTGTCAAGAAAAGGATTATTCGTTTGAAGACTTGTGCCAC  
ACAATATCAGACCACTACTTAGATAATTTGAGCAAGATTTAGAGGAAGAAGTGGGAAAAATGGAAGCC  
AGAGTGTAAAGACCTCATCTACAATCAATTTGTCACCAGGAGAAGTGAAGAAGAGGATGATGATGAAAA  
TACGTGTGGGCCATCAGGACTTTGGGAAGCATAACTCCGTGTAATGGATGTAGGAACCTTGGCTTCCCC  
ATGCTTGGCCAGGAGTCTATCCAAAGAAGAGAAATTACACTATGGAATGTACCATCTGCTTCTCTGG  
ATACATTTCTCAGAAAATGAGAACTTTCTGTGTGATCTCATGGACACAGCTGTACAAGAAACCTTG  
CTCCTTAGAAATTGCAAGGCACCTTCCCAAGAAGTATAATGCCTCTGAGGTAGCAGTACTACTCCA



GGAAGTAGTAACCATAGAAAACAGCTCAACAGGCCAACACCTGATTGTTACCTCCATCCCCTGATACTG  
CCCTCAAAAAATATTGTAAGAGTCATTGACCCAGCCTAAACAGCGAACATCCATTGTGTCTTCTGGA  
TTTTACCAGGAATGAATCACAACCAAGAATATTTGAAATCAACACATCTACAGGGTGCACAAGCTTACT  
GCCAGTCTCTGCTAGTCCACCACCTTCTGTGGGAACACAGAAGTCAAGAATGAGGGAACTAACC  
ATACAGATGACCTCTCCCGACAGGATGACAATGATCCCCAAAAGAATATGATCCTGGGCAATTTGCAGG  
CCTGTCCATGGATCCTCTCCAGCCTGTGAGTCCCCTGAAAAATCCATTTTCATCTATGGGAAAAGAGAA  
CAATGTGAAAAAGGACAAGATGAAGTCAGTTTGGCAAACAGTCCTTTGCCCTTTCAAGCAGTCTCCAATAG  
AAAATAACTCAGAACCTTTGGTAAAGAAAATTAACCCAAAGTGGTCAGTAGAACAATTTTTACAAAAA  
AAGCAACCAACTCGAAAACCATACCATTGTTGGCAACAAGATCAACCAGGAGTGGATCTCGGAATGGGGAC  
CAGTGGGTTATGAACGCAGGGGATTTGTGGAGAGGCCTGACTCTGGGGAGAATAAGTTCATTGCCTA  
AAGCCTTGATCGACATGCATTTGTCAAAAAGTGTCTCTAAATCTGATTCTGATCTCATTGCCTATCCTTC  
CAATGAGAAAACATCAAGAGTAACTGGAGTGAATCTTCCACTGCTGAACACAGTCTAAAGGGAATTCT  
GAAAGAACCACCTCCTTCACATCGGAATGGGAAGAAATGACAAAATAATGAGTTCATAGATGTTGGAA  
TCAACAACGAACTAAAGAGATGAATGGTGAGACCACAAGACCCAGATGCCCTGTCCAAACAGTGGGACA  
ATGTTGGAAAGCATTGGGCTACCTCAGTACGAGAACCACCTGATGGCTAATGGATTTGACAATGTGCAG  
TTTATGGGAAGCAATGTTATGGAAGATCAGGATTTGTTGGAAATTTGGAATCCTTAATTCTGGGCACAGAC  
AAAGAATTCTACAGGCAATCCAGCTCCTTCCAAAGATGAGACCCATTGGGCATGATGGCTACCATCCCAC  
CTCTGTAGCTGAGTGGCTGGATTCCATTGAACTGGGCGACTACACCAAAGCCTTTCTAATTAATGGCTAC  
ACTTCGATGGACCTGTTGAAAAAATCTGGGAGGTTGAACTTATTAATGTTTTAAAAATCAATTTGATTG  
GCCACAGGAAACGATATTTGGCATCTCTGGGAGACAGGCTGCACGACGATCCCCACAGAAGCCCCCTCG  
GTCCATCACCTCAGGGAACCCAGTGGTAATCACACTCCTCCTCAGTTGTCTCCATCACTTAGCCAAAGC  
ACTTACACCCTGGTGGCTCCCTAGACGTTCTCACATTATCATGCAGGGCGATGCAAGGAGGAGAAGAA  
ATGAAAACTACTTTGATGATATTTCCCGATCAAACTGGAGAGGCAGATGGCTCAGACAGGAGACTGGGG  
AGAACCTTCCATTACCTTGCGACCTCCGAATGAAGCCACAGCCTTACCCCGGTACAGTACTGGCAGCAT  
CACCCAGAAAAGCTTATCTTCCAGTCGTGTGATTACAAAGCTTTTTATTTAGTTCTATGCTGATAAAAAG  
AGCTTAGGGGGACAGAATCAACCAAGATGCTTGTGCAAAAATGCGGGCTAACTGTGAGAAGTCTACAGA  
GCAAAATGAAGAAGGTCCTACTATTATTCTTTCTGTCTCATATAAAGGAGTCAAATTTATTGATGCAACA  
AATAAGAACATAATTGCTGAGCATGAAATTCGTAATATCTCCTGTGCTGCCAGGACCCAGAAGACCTCT  
CAACATTTGCCTATATCAAAAAGATTTGAAGTCTAATCACCCTACTGTGATGTTTACTGCCTTTGA  
TGTGAATTTAGCCTATGAAATCATCCTAACCTGGGACAGGCATTGGAAGTCGCTTACCAGCTAGCACTA  
CAAGCAAGAAAAGGGGACACTCTCCACTTCCAGAAAGCTTTGAAAAACAACCTCCAAACCCATCC  
CCAAGCCCGCGTTAGCATTGCAAGTCCGTGGATCTTCTCATGCCAGCCATACCGGGCAGGAACCATC  
AGAGAGACACACTGAGGAGGCACTCAGAAAATTT

ACGCGTACGCGGCCGCTCGAGCAGAACTCATCTCAGAAGAGGATCTGGCAGCAATGATATCCTGGATT  
ACAAGGATGACGACGATAAGGTTTAA

**Protein Sequence:** >RC211823 representing NM\_152788  
 Red=Cloning site Green=Tags(s)

```

MGKDQELLEAARTGNVALVEKLLSGRKGGILGGGSGPLPLSNLLSIWRGPNVNCTDSSGYTALHHAALNG
HKDIVLKLQYEASTNVADNKGYPFIHLAAWKGDPVEIVKILIHGSPSHSRVNEQNENETALHCAAQYGH
SEVVAVLLEELTDPTIRNSKLETPDLAALYGRLRVVKMIISAHPNLMSCNTRKHTPLHLAARNGHKAVV
QVLLLEAGMDVSCQTEKGSALHEAALFGKVDVVRVLLLETGIDANIKDSLGRVLDILKEHPSQKSLQIATL
LQEYLEGVGRSTVLEEPVQEDATQETHISSPVESPSQTKSETVTGELSKLLDEIKLCQEKDYSFEDLCH
TISDHYLDNLSKISEEELGKNGSQSVRTSSTINLSPGEVEEEDDENTCGPSGLWEALPCNGCRNLGFP
MLAQESYPKKRNYTMEIVPSASLDTFPSENENFLCDLMDTAVTKKPCSLEIARAPSPRTDNASEVAVTTP
GTSNHRNSSTGPTDCSPSPDALKNIKVIKVPKQRTSIVSSLDFHRMNHQYEFINTSTGCTSTFT
ASPPASPTSSVGTTEVKNEGTNHTDDL SRQDDNDPPKEYDPGQFAGLLHGSSPACESPENPFHLYGKRE
QCEKGDQEVSLANSPLPFKQSPIENNSEPLVKKIKPKVVSRTIFHKKSQLENHTIVGTRSTRSGSRNGD
QWVMNAGGFVERACTLGRIRSLPKALIDMHLKSVSKSDSLIAYPSNEKTSRVNWSSESSTAHSKSGNS
ERTPSFTSEWEEIDKIMSSIDVGINNELKEMNGETTRPCPVQTVGQWLESIGLPQYENHLMANGFDNVQ
FMGNSVMEDQDLEIGILNSGHRQRILQAIQLLPKMRPIGHDGYHPTSVAEWLDSIELGDYTKAFLINGY
TSMDLLKKIWEVELINVLKINLIGHRKRIASLGDRLHDDPPQKPPRSITLREPSGNHTPPQLSPSLSQS
TYTTGGSLDVPHIIMQGDARRRRNENYFDDIPRSKLERQMAQTGDWGEPSITLRPPNEATASTPVQYWQH
HPEKLIQSCDYKAFYLGSMLIKELRGTESTQDACAKMRANCQKSTEQMKKVPTIILSVSYKGVKFIDAT
NKNIIAEHEIRNISCAAQDPEDLSTFAYITKDLKSNHHYCHVFTAFDVNLAYEIIILTGQAFEVAYLAL
QARKGGHSTLPESFENKPSKIPKPRVSIRKSVDLLHASHTGQEPSERHTEELRKF
  
```

TRTRPLEQKLISEEDLAANDILDYKDDDDKV

**Chromatograms:** [https://cdn.origene.com/chromatograms/mk8025\\_c04.zip](https://cdn.origene.com/chromatograms/mk8025_c04.zip)

**Restriction Sites:** SgfI-MluI

**Cloning Scheme:**

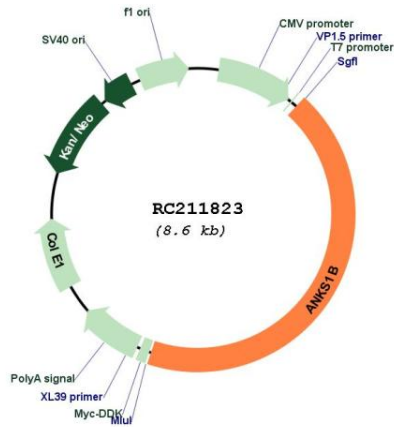


**ACCN:** NM\_152788

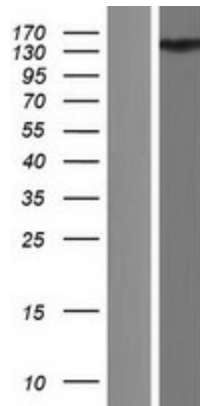
**ORF Size:** 3744 bp

<b>OTI Disclaimer:</b>	The molecular sequence of this clone aligns with the gene accession number as a point of reference only. However, individual transcript sequences of the same gene can differ through naturally occurring variations (e.g. polymorphisms), each with its own valid existence. This clone is substantially in agreement with the reference, but a complete review of all prevailing variants is recommended prior to use. <a href="#">More info</a>
<b>OTI Annotation:</b>	This clone was engineered to express the complete ORF with an expression tag. Expression varies depending on the nature of the gene.
<b>Components:</b>	The ORF clone is ion-exchange column purified and shipped in a 2D barcoded Matrix tube containing 10ug of transfection-ready, dried plasmid DNA (reconstitute with 100 ul of water).
<b>Reconstitution Method:</b>	<ol style="list-style-type: none"><li>1. Centrifuge at 5,000xg for 5min.</li><li>2. Carefully open the tube and add 100ul of sterile water to dissolve the DNA.</li><li>3. Close the tube and incubate for 10 minutes at room temperature.</li><li>4. Briefly vortex the tube and then do a quick spin (less than 5000xg) to concentrate the liquid at the bottom.</li><li>5. Store the suspended plasmid at -20°C. The DNA is stable for at least one year from date of shipping when stored at -20°C.</li></ol>
<b>RefSeq:</b>	<a href="#">NM_152788.4</a> , <a href="#">NP_690001.3</a>
<b>RefSeq Size:</b>	4431 bp
<b>RefSeq ORF:</b>	3747 bp
<b>Locus ID:</b>	56899
<b>UniProt ID:</b>	<a href="#">Q7Z6G8</a>
<b>Cytogenetics:</b>	12q23.1
<b>Domains:</b>	SAM, PID
<b>MW:</b>	137.9 kDa
<b>Gene Summary:</b>	This gene encodes a multi-domain protein that is predominantly expressed in brain and testis. This protein interacts with amyloid beta protein precursor (AbetaPP) and may have a role in normal brain development, and in the pathogenesis of Alzheimer's disease. Expression of this gene has been shown to be elevated in patients with pre-B cell acute lymphocytic leukemia associated with t(1;19) translocation. Alternatively spliced transcript variants encoding different isoforms (some with different subcellular localization, PMID:15004329) have been described for this gene. [provided by RefSeq, Aug 2011]

Product images:



Circular map for RC211823



Western blot validation of overexpression lysate (Cat# [LY407279]) using anti-DDK antibody (Cat# [TA50011-100]). Left: Cell lysates from untransfected HEK293T cells; Right: Cell lysates from HEK293T cells transfected with RC211823 using transfection reagent MegaTran 2.0 (Cat# [TT210002]).