

Product datasheet for **RC211820**

DUSP10 (NM_144729) Human Tagged ORF Clone

Product data:

Product Type:	Expression Plasmids
Product Name:	DUSP10 (NM_144729) Human Tagged ORF Clone
Tag:	Myc-DDK
Symbol:	DUSP10
Synonyms:	MKP-5; MKP5
Mammalian Cell Selection:	Neomycin
Vector:	pCMV6-Entry (PS100001)
E. coli Selection:	Kanamycin (25 ug/mL)



[View online »](#)

ORF Nucleotide Sequence:

>RC211820 ORF sequence
 Red=Cloning site Blue=ORF Green=Tags(s)

TTTTGTAATACGACTCACTATAGGGCGGCCGGAATTCGTCGACTGGATCCGGTACCGAGGAGATCTGCC
 GCC**CGGATCGCC**

ATGCCTCCGTCTCCTTTAGACGACAGGGTAGTAGTGGCACTATCTAGGCCGTCGACCTCAGGATCTCA
 ACCTTTGTTTAGACTCTAGTTACCTTGGCTCTGCCAACCCAGGCAGTAACAGCCACCCTCTGTCATCGC
 CACCACCGTTGTGTCCTCAAGGCTGCGAATCTGACGTATATGCCCTCATCCAGCGGCTCTGCCCGCTCG
 CTGAATTGTGGATGCAGCAGTGCCAGCTGCTGCACTGTGGCAACCTACGACAAGGACAATCAGGCCCAAA
 CCCAAGCCATTGCCGCTGGCACCACCACCCTGCCATCGGAACCTCTACCACCTGCCCTGCTAACCCAGAT
 GGTCAACAATAATGAGAATACAGGCTCTCTAAGTCCATCAAGTGGGGTGGGCAGCCCTGTGTGAGGGACC
 CCCAAGCAGCTAGCCAGCATAAAATACTACCCCAATGACTTGGCAAAGAAGATGACCAATGCAGCA
 AGAGTCACCTGCCGAGTCAGGGCCCTGTCATCATTGACTGCAGGCCCTTCATGGAGTACAACAAGAGTCA
 CATCCAAGGAGCTGTCCACATTAAGTGTCCGATAAAGATCAGCCGCGGAGACTGCAGCAGGGCAAGATC
 ACTGTCCTAGACTTGATTTCTGTAGGGAAGGCAAGGACTCTTTCAAGAGGATCTTTTCCAAAGAAATTA
 TAGTTTATGATGAGAATACCAATGAACCAAGCCGAGTGTGCCCTCCAGCCACTTCACATAGTCCCTCGA
 GTCCCTGAAGAGAGAAGGCAAAGAACCCTCTGGTGTGAAAGGTGGACTTAGTAGTTTTAAGCAGAACCAT
 GAAAACCTCTGTGACAACTCCCTCCAGCTCCAAGAGTCCCGGGAGGTGGGGGGCGGCATCCCGCGCCT
 CGAGCTTGCTACCTCAGCCCATCCCCACCACCCTGACATCGAGAACGCTGAGCTCACCCCATCTTGCC
 CTTCTGTTCCTGGCAATGAGCAGGATGCTCAGGACCTGGACACCATGCAGCGGCTGAACATCGGCTAC
 GTCATCAACGTCACCCTCATCTTCCCCTCTACCACTATGAGAAAGGCCCTGTTCAACTACAAGCGGCTGC
 CAGCCACTGACAGCAACAAGCAGAACCTGCGGCAGTACTTTGAAGAGGCTTTTGTGAGTTCAATGAGGAAGC
 TCACCAGTGTGGGAAGGGCTTCTCATCCACTGCCAGGCTGGGGTGTCCCGCTCCGCCACCATCGTCATC
 GCTTACTTGATGAAGCAGCTCGGATGACCATGACTGATGCTTATAAATTTGTCAAAGGCAACGACCAA
 TTATCTCCCAAACCTTAACTTCATGGGGCAGTTGCTAGAGTTCGAGGAAGACCTAAACAACGGTGTGAC
 ACCGAGAATCCTTACACCAAAGCTGATGGGCGTGGAGACGGTTGTG

ACGCGTACGCGGCCGCTCGAGCAGAAACTCATCTCAGAAGAGGATCTGGCAGCAATGATATCCTGGATT
 ACAAGGATGACGACGATAAGGTTTAA

Protein Sequence:

>RC211820 protein sequence
 Red=Cloning site Green=Tags(s)

MPPSPLDDRIVVVALSRPVRPQDLNLCLDSSYLGSANPGSNHPPVIATTVVSLKAANLYMPSSSGSARS
 LNCGCSSASCCTVATYDKDNQAQTQAI AAGTTTTAIGTSTTCPANQMVNNTGSLSPSSGVGSPVSGT
 PKQLASIKI IYPNDLAKKMTKCSKSHLPSQGPVIIDCRPFMEYKSHIQGAVHINCADKISRRLRQQGKI
 TVLDLISCREGKDSFKRIFSKEIIVYDENTNEPSRVMPSPQLHIVLESKREGKEPLVLKGLLSSFKQNH
 ENLCDNSLQLQECREVGGSASAASSLLPQIPPTPIENAELTPILPFLFLGNEQDAQDLDTMQRNLNIGY
 VINVTTHLPLYHYEKGLFNYKRLPATDSNKQNLQRQYFEEAFEFIEEAHQCGKGLLIHCQAGVSRSATIVI
 AYLMKHTRMTMDAYKFVKGRPIISP NLNFMGQLLEFEEDLNNGVTPRILTPKLMGVETVV

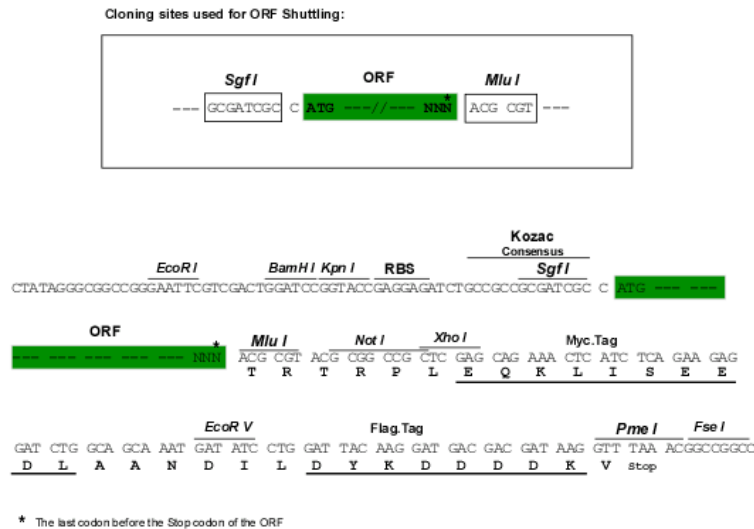
TRTRPLEQKLI SEEDLAANDILDYKDDDDKV

Chromatograms:

https://cdn.origene.com/chromatograms/mk6329_e01.zip

Restriction Sites:

Sgfl-MluI

Cloning Scheme:

ACCN: NM_144729

ORF Size: 1449 bp

OTI Disclaimer: The molecular sequence of this clone aligns with the gene accession number as a point of reference only. However, individual transcript sequences of the same gene can differ through naturally occurring variations (e.g. polymorphisms), each with its own valid existence. This clone is substantially in agreement with the reference, but a complete review of all prevailing variants is recommended prior to use. [More info](#)
OTI Annotation: This clone was engineered to express the complete ORF with an expression tag. Expression varies depending on the nature of the gene.

Components: The ORF clone is ion-exchange column purified and shipped in a 2D barcoded Matrix tube containing 10ug of transfection-ready, dried plasmid DNA (reconstitute with 100 ul of water).

Reconstitution Method:

1. Centrifuge at 5,000xg for 5min.
2. Carefully open the tube and add 100ul of sterile water to dissolve the DNA.
3. Close the tube and incubate for 10 minutes at room temperature.
4. Briefly vortex the tube and then do a quick spin (less than 5000xg) to concentrate the liquid at the bottom.
5. Store the suspended plasmid at -20°C. The DNA is stable for at least one year from date of shipping when stored at -20°C.

RefSeq: [NM 144729.1](#), [NM 144729.2](#), [NP 653330.1](#)
RefSeq Size: 1824 bp

RefSeq ORF: 422 bp

Locus ID: 11221

Cytogenetics: 1q41

Domains: DSPc

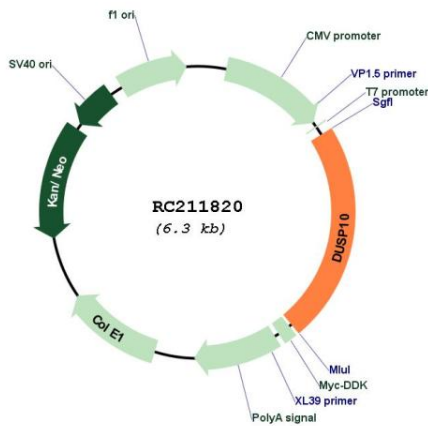
Protein Families: Druggable Genome, Phosphatase

Protein Pathways: MAPK signaling pathway

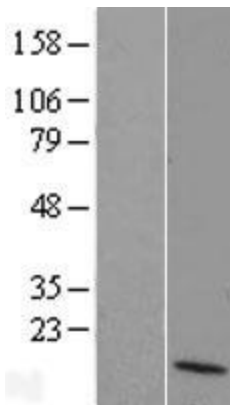
MW: 52.6 kDa

Gene Summary: Dual specificity protein phosphatases inactivate their target kinases by dephosphorylating both the phosphoserine/threonine and phosphotyrosine residues. They negatively regulate members of the MAP kinase superfamily, which is associated with cellular proliferation and differentiation. Different members of this family of dual specificity phosphatases show distinct substrate specificities for MAP kinases, different tissue distribution and subcellular localization, and different modes of expression induction by extracellular stimuli. This gene product binds to and inactivates p38 and SAPK/JNK. Alternative splicing results in multiple transcript variants. [provided by RefSeq, Apr 2014]

Product images:



Circular map for RC211820



Western blot validation of overexpression lysate (Cat# [LY408157]) using anti-DDK antibody (Cat# [TA50011-100]). Left: Cell lysates from untransfected HEK293T cells; Right: Cell lysates from HEK293T cells transfected with RC211820 using transfection reagent MegaTran 2.0 (Cat# [TT210002]).