

Product datasheet for RC211815

ADCY8 (NM_001115) Human Tagged ORF Clone

Product data:

Product Type:	Expression Plasmids
Product Name:	ADCY8 (NM_001115) Human Tagged ORF Clone
Tag:	Myc-DDK
Symbol:	ADCY8
Synonyms:	AC8; ADCY3; HBAC1
Mammalian Cell Selection:	Neomycin
Vector:	pCMV6-Entry (PS100001)
E. coli Selection:	Kanamycin (25 ug/mL)
ORF Nucleotide Sequence:	>RC211815 representing NM_001115 Red=Cloning site Blue=ORF Green=Tags(s)

TTTTGTAATACGACTCACTATAGGGCGGCCGGAATTCGTCGACTGGATCCGGTACCGAGGAGATCTGCC
GCC**CGATCGCC**

ATGGAGCTCTCCGATGTGCGCTGCCTTACAGGCAGCGAGGAACTCTACCCATCCACCCGACGCCCCGG
CCGGCGACGGCAGGAGCGCCTCCCGGCCGACGGCTGCTGTGGCAGACGGCGGTGCGACACATCACGGA
GCAGCGCTTCATTACGGGCACCGGGAGGCAGCGGCAGCGGGAGTGAGGCTCGGGCAAAGCCTCGGAC
CCTGCGGGCGGGCCCCAACCCACACGCGCAGCTGTGAGGCGACTCGGCGTGCCTCTACTCGC
TGGCCCCGGGAGAGCGAGCGCACAGCAGCTGCGGCACCAAAGTCTCCCGGAACGCAGCGGGAGCGCGAG
TGCCAGCGGCAGCGGAGCGGGGCGACCTGGGCTTCTGACACCTTGACTGTGCCCTAGCAACTCGGAT
TTCTTTCTTAATGGGGGTATAGCTACCGAGGGTCAATTTCCCCACCCTGCGCAACTCCTTCAAATCTC
GGGATTTGGAACGCCTCTACCAGCGCTATTTCTGGGCCAAAGGCGCAAATCGGAAGTGGTGATGAACGT
GCTGGACGTGCTGACAAACTCACTCTTGGTCTACACTTGAGCCTGGCCTCGGCCCCATGGACCCG
CTCAAGGGCATCCTGCTGGGCTTCTCACCGCATTGAGGTAGTGATCTGCGCCTGGTGGTGGTCAGGA
AGGACACCACCTCCACACGTACCTGCAGTACAGCGCGTGGTCACTGGGTGGCCATGACCACCCAGAT
CCTGGCAGCAGGCTCGGCTACGGGCTCCTGGCGACGGCATAGGCTACGTGCTCTTACGCTCTTCGCC
ACCTACAGTATGCTGCCGCTGCCGCTCACCTGGGCCATCCTGGCCGCTGGGCACCTCGCTGCTGCAGG
TCATCCTCAAGTGGTCAACCCGGCTGGCGGTCATTTCCATCAACCAGGTTGTGGCCAGCGAGTGT
ATTCATGTGTATGAACACAGCTGGAATCTTCATCAGTTACCTGTGACAGCGTGCACAGCGCAAGCTTTC
CTGGAGACTCGGAGGTGTGTGGAGGCCAGGCTGCGCCTGGAGACAGAGAACCAAAGACAGGAGCGGCTCG
TGCTTTCTGTGCTCCCCGGTTTGTGTCTGGAAATGATCAACGACATGACCAATGTGGAAGATGAGCA
CCTGCAGCACCAGTTCATCGGATCTACATCCATCGCTATGAGAACGTCAGTATTCTTTTGCAGATGTT
AAAGGATTTACCAACCTCTCCACGACCTTGTCTGCTCAGGAGCTGGTCAGGATGCTCAACGAGCTTTTG
CCAGATTTGATCGACTGGCCATGAGCATCACTGCCTTCGATTTAAAATCCTGGGGGACTGCTACTACTG
CGTGTCTGGACTTCTGAGCCCCGCCAGGACCATGCCACTGCTGTGTTGAAATGGGTCTCAGCATGATC



[View online »](#)

AAAACCATCAGGTATGTGCGGTCAAGGACAAAACACGATGTTGACATGAGGATTGGAATCCAACCTCCGGCT
CGGTGCTGTGCGGTGTTTTGGGACTAAGGAAGTGGCAGTTTGTGTCTGGTCTTGGGATGTGGATATTGC
AAACAACTCGAATCTGGAGGAATCCCTGGGAGGATTCACATTTCCAAAGCCACGCTGGACTGTCTCAAC
GGTGACTATAACGTGGAAGAGGGCCATGGTAAAGAGAGGAATGAATTCCTGAGGAAGCATAATATCGAAA
CTTACTTAATTAAGCAGCCTGAGGACAGTCTGCTGTCTTGCCTGAAGATATCGTCAAGGAGTCAGTGAG
CTCCTCAGACCGGAGAAAACAGTGGGGCCACATTCAGTGAAGGATCCTGGAGCCCTGAACCTGCCCTTTGAT
AATATCGTGGGAAACAGAATACTCTGGCTGCCCTAACAAAGAAATCAATAAATCTGCTTCCAAACCATC
TTGCACAAGCTTTGCATGTCCAGTCTGGCCCTGAGGAAATTAACAAGAGAATAGAACATACCATCGACTT
GCGGAGTGGCGATAAATTGAGAAGAGAGCATATCAAGCCATTCTCACTGATGTTTAAAGACTCCAGCCTG
GAGCACAAGTATTCTCAAATGAGGGATGAAGTGTCAAGTCAAACCTGGTCTGTGCAATTTATCGTCTTTC
TATTTATCACGGCAATACAAAGTTTGCTTCTTCAAGAGTGATGCCAATGACCATCCAGTTCTCCAT
TCTGATTATGCTGCACTCGGCTCTGGTCTCATCACCACAGCAGAGGATTATAAATGTTTGCCCTCATC
CTCCGAAAACCTGCTGTGGATTAATGAGACCTATTTGGCCCGAACGTATCATCTTTGCATCCATTT
TGATTAATTTCTGGGTGCCATCTTAAATATCCTGTGGTGTGATTTTGACAAGTCGATACCCTTGAAGAA
CCTGACTTTCAATTCCTCAGCTGTGTTACAGATATCTGCTCCTACCCAGAGTACTTTGCTTTCAGGGG
GTGTTGGCCATGGTGACCTGTGCAGTTTTCTCCGGCTGAACTCCGTCCCTGAAGCTGGCAGTGTGCTGA
TCATGATTGCCATCTATGCCCTGCTCACTGAGACCGTCTACGTAGGCCTCTTCTGCGTTATGACAACT
CAACCACAGTGGAGAAGATTTCTGGGGACCAAGGAGGTATCACTGCTACTGATGGCCATGTTTCTCCTG
GCTGTGTTCTACCATGGACAGCAGCTGGAGTACACAGCCCGCCTGGACTTCTTTGGCGAGTACAGGCCA
AAGAGGAGATCAATGAGATGAAGGAGCTGAGGGAAACACAATGAGAACATGCTCCGGAATATCTTACCAG
CCATGTGGCCCGCCATTTCTAGAGAAGGACCGAGACAATGAGGAGCTGTATTCTCAATCCTATGATGCT
GTTGGGGTGTGTTTGCCTCCATCCCAGGATTTGCGGACTTTTACTCTCAGACTGAAATGAATAACCAGG
GAGTGAATGCCCTGCGCTTGCTCAATGAGATCATTGCTGACTTCGATGAGTTGCTTGGTGAAGACCGATT
TCAAGACATTGAAAAGATTAAGACCATTGGCAGCACCTACATGGCCGTGTCAGGCCTGTCACCTGAAAAA
CAGCAATGTGAAGACAAGTGGGGACATTTGTGTGCTCTGGCTGACTTCTCACTCGCCCTGACAGAAAAGCA
TACAGGAGATCAACAAGCATTATTCAACAATTTTGAACCTCCGGATTGGCATCAGCCACGGCTCAGTGGT
AGCTGGCGTTATCGGCGCTAAGAAACCACAGTATGACATTTGGGGCAAACTGTGAACCTGGCAAGCCGA
ATGGACAGCACGGGGTTAGTGGCCGGATCCAAGTCCCAGAGGAGACCTATCTCATCCTGAAGGACCAGG
GCTTTGCCTTTGATTACCGAGGGGAGATCTATGTGAAGGGTATCAGTGAACAGGAAGGAAAAATCAAAC
GTACTTTCTTCTGGAAGAGTCCAACCCAACCCATTATCTTGCCTTCAAGAAGACTGCCTGGGCAGTAC
TCCCTGGCCGCGTTGTCTGGGACTTGTCCAGTCCCTCAATAGGCAAAGGCAGAAGCAGCTACTCAATG
AGAAACAACACAGGAATCATCAAGGGTCATTACAACCGCGGACTTTGTTGTACCCAGCGGCACAGA
GCCTGGAGCCCAGGCTGAAGGCACCGACAATCTGATTTGCCA

ACGCGTACGCGGCCGCTCGAGCAGAACTCATCTCAGAAGAGGATCTGGCAGCAATGATATCCTGGATT
ACAAGGATGACGACGATAAGGTTTAA

Protein Sequence: >RC211815 representing NM_001115
Red=Cloning site Green=Tags(s)

```
MELSDVRCLTGSEELYTIHPTPPAGDGRSASRPQRLWQTAVRHITEQRFIHGHRGGSGSGSGSGKASD
PAGGGPNHHTPQLSGDSALPLYSLGPGERAHSTCGTKVFPERSGSGSASGSGGGDLGFLHLDCAPSNSD
FFLNGGYSYRGVIFPTLRNSFKSRDLERLYQRYFLGQRRKSEVVMNVLDVLTCLLVLHLASAPMDP
LKGILLGFFTGIEVVICALVVRKDDTTSHTYLQYSGVVTWVAMTTQILAAGLGYGLLDGIGYVLFTLFA
TYSMLPLPLTWAILAGLGTSLQVILQVVIPRLAVISINQVVAQAVLFMCMTAGIFISYLSDRAQRQAF
LETRRCEARLRLLETENQRQERLVLSVLPFRVLEMINDMTNVEDEHLQHQFHRIYIHYENVSILFADV
KGFTNLSTTLAQELVRMLNELFARFDRLAHEHHCLRIKILGDCYYCVSGLPEPRQDHAHCCVEMGLSMI
KTIRYVRSRTKHDVDMRIGIHSVLCVGLGRKWQFDVWSWDVDIANKLESGGIPGRIHISKATLDCLN
GDYNVEEGHGKERNEFLRKHNIETYLKQPEDSLLSLPEDIVKESVSSDRRNSGATFTEGSWSPFLPF
NIVGKQNTLAALTRNSINLLPNHLAQUALHVQSGPEEINKRIEHTIDLRSGDKLRREHIKPFSLMFKDSSL
EHKYSQMRDEVFKSNLVCAFIVLLFITAIQSLLPSSRVMPMTIQFSILIMLHSALVLITTAEDYKCLPLI
LRKTCCWINETYLARNVIFASILINFLGAILNILWCDFKSIPLKNLTFNSSAVFTDICSYPEYVFTG
VLMAMVCAVFLRLNSVLKLAVALLIMIAIYALLTETVYVGLFLRYDNLNHSGEDFLGTKEVSLLLMAMFLL
AVFYHGQLEYTARLDFLWRVQAKEEINEMKELREHNENMLRNILPSHVARHFLEKDRDNEELYSQSYDA
VGVMFASIPGFADFYQTEMNQGVECLRLNEIIADFDELLGEDRFQDIEKIKTIGSTYMAVSGLSPEK
QQCEDKWGHLCALADFSALATESIQEINKHSFNNFELRIGISHGVSVAAGVIGAKKPQYDIWGKTVNLASR
MDSTGVSGRIQVPEETYLILKDQGFADYRGEIYVKGISEQEGKIKTYFLLGRVQPNPFIIPRRRLPGQY
SLAAVVLGLVQSLNRQKQKQLLNENNNTGIKGHYNNRRLTLLSPSGTEPGAQAEGTDKSDLP
```

TRTRPLEQKLISEEDLAANDILDYKDDDDKV

Chromatograms: https://cdn.origene.com/chromatograms/mk6168_h12.zip

Restriction Sites: SgfI-MluI

Cloning Scheme:

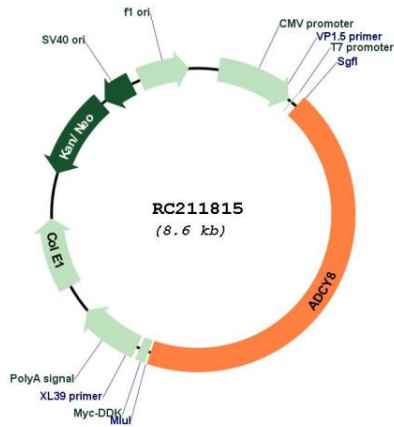


ACCN: NM_001115

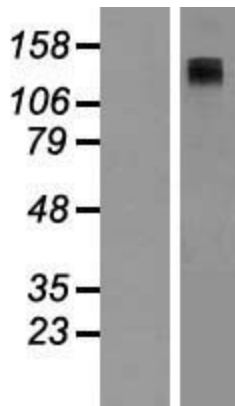
ORF Size: 3753 bp

OTI Disclaimer:	The molecular sequence of this clone aligns with the gene accession number as a point of reference only. However, individual transcript sequences of the same gene can differ through naturally occurring variations (e.g. polymorphisms), each with its own valid existence. This clone is substantially in agreement with the reference, but a complete review of all prevailing variants is recommended prior to use. More info
OTI Annotation:	This clone was engineered to express the complete ORF with an expression tag. Expression varies depending on the nature of the gene.
Components:	The ORF clone is ion-exchange column purified and shipped in a 2D barcoded Matrix tube containing 10ug of transfection-ready, dried plasmid DNA (reconstitute with 100 ul of water).
Reconstitution Method:	<ol style="list-style-type: none"> 1. Centrifuge at 5,000xg for 5min. 2. Carefully open the tube and add 100ul of sterile water to dissolve the DNA. 3. Close the tube and incubate for 10 minutes at room temperature. 4. Briefly vortex the tube and then do a quick spin (less than 5000xg) to concentrate the liquid at the bottom. 5. Store the suspended plasmid at -20°C. The DNA is stable for at least one year from date of shipping when stored at -20°C.
RefSeq:	NM_001115.3
RefSeq Size:	6005 bp
RefSeq ORF:	3756 bp
Locus ID:	114
UniProt ID:	P40145
Cytogenetics:	8q24.22
Domains:	CYCc
Protein Families:	Druggable Genome, Transmembrane
Protein Pathways:	Calcium signaling pathway, Chemokine signaling pathway, Dilated cardiomyopathy, Gap junction, GnRH signaling pathway, Long-term potentiation, Melanogenesis, Oocyte meiosis, Progesterone-mediated oocyte maturation, Purine metabolism, Taste transduction, Vascular smooth muscle contraction
MW:	139.9 kDa
Gene Summary:	Adenylate cyclase is a membrane bound enzyme that catalyses the formation of cyclic AMP from ATP. The enzymatic activity is under the control of several hormones, and different polypeptides participate in the transduction of the signal from the receptor to the catalytic moiety. Stimulatory or inhibitory receptors (Rs and Ri) interact with G proteins (Gs and Gi) that exhibit GTPase activity and they modulate the activity of the catalytic subunit of the adenylyl cyclase [provided by RefSeq, Jul 2008]

Product images:



Circular map for RC211815



Western blot validation of overexpression lysate (Cat# [LY420131]) using anti-DDK antibody (Cat# [TA50011-100]). Left: Cell lysates from untransfected HEK293T cells; Right: Cell lysates from HEK293T cells transfected with RC211815 using transfection reagent MegaTran 2.0 (Cat# [TT210002]).