

## Product datasheet for **RC211813**

### PRC1 (NM\_199413) Human Tagged ORF Clone

#### Product data:

Product Type:	Expression Plasmids
Product Name:	PRC1 (NM_199413) Human Tagged ORF Clone
Tag:	Myc-DDK
Symbol:	PRC1
Synonyms:	ASE1
Mammalian Cell Selection:	Neomycin
Vector:	pCMV6-Entry (PS100001)
E. coli Selection:	Kanamycin (25 ug/mL)



[View online »](#)

**ORF Nucleotide Sequence:**

>RC211813 representing NM\_199413  
 Red=Cloning site Blue=ORF Green=Tags(s)

TTTTGTAATACGACTCACTATAGGGCGGCCGGGAATTCGTCGACTGGATCCGGTACCGAGGAGATCTGCC  
 GCC**CGGATCGCC**

ATGAGGAGAAGTGAAGTCTGGCGGAGGAGTCCATAGTATGTCTGCAGAAAGCCCTAAATCACCTTCGGG  
 AAATATGGGAGCTAATTGGGATTCCAGAGGACCAGCGGTTACAAAGAAGTGAAGTGGTAAAGAAGCATAT  
 CAAGGAACTCCTGGATATGATGATTGCTGAAGAGGAAAGCCTGAAGGAAAAGACTCATCAAAAAGCATATCC  
 GTCTGTGCAGAAAGAGCTGAACACTCTGTGCAGCGAGTTACATGTTGAGCCATTTAGGAAGAAGGAGAGA  
 CGACCATCTTGAACCTAGAAAAAGATTTGCGCACCCAAGTGAATTTGATGCGAAAACAGAAAAAGGAGAG  
 AAAACAGGAACTGAAGCTACTTCAAGAGCAAGATCAAGAAGTGTGCGAAATTCCTTTGTATGCCCCACTAT  
 GATATTGACAGTGCCTCAGTGCCAGCTTAGAAGAGCTGAACAGTTTCAAGCAACATGTGACAACTTTGA  
 GGGAAACAAAGGCTTCTAGGCGTGAGGAGTTTGTCAAGTAAAGAGACAGATCATACTGTGTATGGAAGA  
 ATTAGACCACACCCAGACACAAGCTTTGAAAGAGATGTGGTGTGTGAAGACGAAGATGCCTTTTGTGTTG  
 TCTTTGGAGAATATTGCAACACTACAAAAGTTGCTACGGCAGCTGGAAATGCAGAAATCACAAAATGAAG  
 CAGTGTGTGAGGGGCTGCGTACTCAAATCCGAGAGCTCTGGGACAGGTTGCAAAATACCTGAAGAAGAAAG  
 AGAAGCTGTGGCCACCATTATGTCTGGGTCAAAGGCCAAGGTCGGAAAGCGCTGCAATTAGAAGTGGAT  
 CGGTTGGAAGAACTGAAAATGCAAAACATGAAGAAAGTGAATGAGGCAATTCGAGTGGAGCTGGTTCAGT  
 ACTGGGACCAGTGCTTTTATAGCCAGGAGCAGAGACAAGCTTTTGCCCTTTCTGTGCTGAGGACTACAC  
 AGAAAGTCTGCTCCAGCTCCACGATGCTGAGATTGTGCGGTTAAAAACTACTATGAAGTTCACAAGGAA  
 CTCTTTGAAGGTGTCCAGAAGTGGGAAGAAACCTGGAGGCTTTTCTTAGAGTTTGAGAGAAAAGCTTCAG  
 ATCCAAATCGATTTACAAACCGAGGAGGAAATCTTCTAAAAGAAGAAAAACAACGCAAGCTCCAGAA  
 AATGCTGCCCAAGCTGGAAGAAGAGTTGAAGGCACGAATTTGAATTTGGGAAACAGGAACATTCAAAGGCA  
 TTTATGGTGAATGGGCAGAAATTCATGGAGTATGTGCGAACAATGGGAGATGCATCGATTGGAGAAAG  
 AGAGAGCCAAGCAGGAAAGACAACCTGAAGAAACAAAAACAGACAGAGACAGAGATGCTGTATGGCAGCGC  
 TCCTCGAACACCTAGCAAGCGGCGAGGACTGGCTCCCAATACACCGGGCAAAGCACGTAAGCTGAACACT  
 ACCACCATGTCCAATGCTACGGCCAATAGTAGCATTTCGGCCTATCTTTGGAGGGACAGTCTACCACTCCC  
 CCGTGTCTCGACTTCTCCTTCTGGCAGCAAGCCAGTCTGCTTCCACCTGTTCAAGGAAGAAAACACC  
 CCGTACTGGCAGGCATGGAGCCAACAAGGAGAACCTGGAGCTCAACGGCAGCATCTGAGTGGTGGGTAC  
 CCTGGCTCGGCCCCCTCCAGCGCAACTCAGCATTAAATCTGTTGCCAGCACCTATTCTGAGTTTGGCC  
 GAGAACTTCAAAGGCTTCAAATCTGATGCTACTTCTGGAATCTCAATTCAACCAACATCCAGTCC

**ACGCGT**ACGCGGCCGCTCGAGCAGAAACTCATCTCAGAAGAGGATCTGGCAGCAAATGATATCCTGGATT  
 ACAAGGATGACGACGATAAGGTTTAA

**Protein Sequence:**

>RC211813 representing NM\_199413  
 Red=Cloning site Green=Tags(s)

MRRSEVLAEEESIVCLQKALNHLREIWELIGIPEDQRLQRTEVVKKHIKELLDMMIAEEESLKERLIKISIS  
 VCQKELNTLCELHVEPFQEEGETTILQLEKDLRTQVELMRKQKQKQELKLLQEQQELCEILCMPHY  
 DIDSASVPSLEELNQFRQHVTTLRETKASRREEFVSIKRQIILCMEELDHTPDTSFERDVCEDAFCL  
 SLENIATLQKLLRQLEMQKSQNEAVCEGLRTQIRELWDRLQIPEEEREAVATIMSGSKAKVRKALQLEVD  
 RLEELKMQNMKKVIEAIRVELVQYWDQCFYSQEQRAFAPFCAEDYTESLLQLHDAEIVRLKNYYEVHKE  
 LFEGVQKWEETWRLFLEFERKASDPNRFNTRGGNLLKEEKQRAKLQKMLPKLEELKARIELWEQEHKA  
 FMVNGQKFMFYVAEQWEMHRLEKERAKQERQLKNKKQTEMLYGSAPRTPSKRRGLAPNTPGKARKLNT  
 TTMSNATANSSIRPIFGGTVYHSPVSRLLPPSGSKPVAASTCSGKKTPTRTGRHGANKENLELNGSILSGGY  
 PGSAPLQRNFSINSVASTYSEFARELSKASKSDATSGILNSTNIQS

**TR**TRPLEQKLISEEDLAANDILDYKDDDDKV

**Chromatograms:**

[https://cdn.origene.com/chromatograms/mk8069\\_d12.zip](https://cdn.origene.com/chromatograms/mk8069_d12.zip)

Restriction Sites: SgfI-MluI

Cloning Scheme:



ACCN: NM\_199413

ORF Size: 1818 bp

OTI Disclaimer: The molecular sequence of this clone aligns with the gene accession number as a point of reference only. However, individual transcript sequences of the same gene can differ through naturally occurring variations (e.g. polymorphisms), each with its own valid existence. This clone is substantially in agreement with the reference, but a complete review of all prevailing variants is recommended prior to use. [More info](#)

OTI Annotation: This clone was engineered to express the complete ORF with an expression tag. Expression varies depending on the nature of the gene.

Components: The ORF clone is ion-exchange column purified and shipped in a 2D barcoded Matrix tube containing 10ug of transfection-ready, dried plasmid DNA (reconstitute with 100 ul of water).

- Reconstitution Method:
1. Centrifuge at 5,000xg for 5min.
  2. Carefully open the tube and add 100ul of sterile water to dissolve the DNA.
  3. Close the tube and incubate for 10 minutes at room temperature.
  4. Briefly vortex the tube and then do a quick spin (less than 5000xg) to concentrate the liquid at the bottom.
  5. Store the suspended plasmid at -20°C. The DNA is stable for at least one year from date of shipping when stored at -20°C.

RefSeq: [NM\\_199413.2](#)

RefSeq Size: 3091 bp

RefSeq ORF: 1821 bp

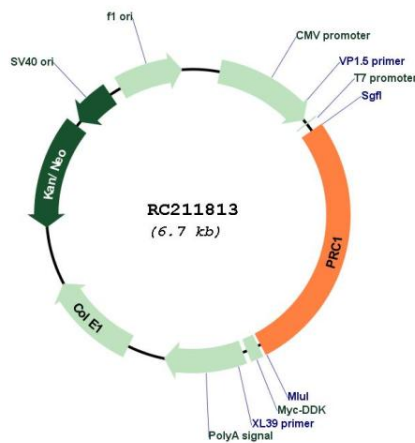
Locus ID: 9055

**Cytogenetics:** 15q26.1

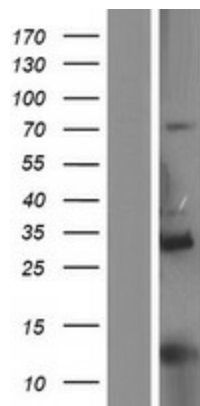
**MW:** 70.1 kDa

**Gene Summary:** This gene encodes a protein that is involved in cytokinesis. The protein is present at high levels during the S and G2/M phases of mitosis but its levels drop dramatically when the cell exits mitosis and enters the G1 phase. It is located in the nucleus during interphase, becomes associated with mitotic spindles in a highly dynamic manner during mitosis, and localizes to the cell mid-body during cytokinesis. This protein has been shown to be a substrate of several cyclin-dependent kinases (CDKs). It is necessary for polarizing parallel microtubules and concentrating the factors responsible for contractile ring assembly. Alternative splicing results in multiple transcript variants. [provided by RefSeq, Jun 2012]

**Product images:**



Circular map for RC211813



Western blot validation of overexpression lysate (Cat# [LY404548]) using anti-DDK antibody (Cat# [TA50011-100]). Left: Cell lysates from untransfected HEK293T cells; Right: Cell lysates from HEK293T cells transfected with RC211813 using transfection reagent MegaTran 2.0 (Cat# [TT210002]).