

Product datasheet for **RC211812**

ROD1 (PTBP3) (NM_005156) Human Tagged ORF Clone

Product data:

Product Type:	Expression Plasmids
Product Name:	ROD1 (PTBP3) (NM_005156) Human Tagged ORF Clone
Tag:	Myc-DDK
Symbol:	ROD1
Synonyms:	ROD1
Mammalian Cell Selection:	Neomycin
Vector:	pCMV6-Entry (PS100001)
E. coli Selection:	Kanamycin (25 ug/mL)



[View online »](#)

ORF Nucleotide Sequence:

>RC211812 representing NM_005156
 Red=Cloning site Blue=ORF Green=Tags(s)

TTTTGTAATACGACTCACTATAGGGCGGCCGGAATTCGTCGACTGGATCCGGTACCGAGGAGATCTGCC
 GCC**CGGATCGCC**

ATGGATGGTGTGTGTACAGATCTTATAACAGTCGGTTAAAGCGGGATCTGATGAGCTTCTTTCTCTG
 GCATCATTAAACGGACCTTTACCATGAATAGTTCTACTCCTTCTACAGCTAATGGGAATGACAGCAAGAA
 ATTTAAACGAGATAGACCTCCCTGTTCCGCTTCCCGTGTCTCCATCTTCGAAAAATCCATGTGATGTC
 ACCGAAGCAGAGATCATATCATTAGGTCTACCATTGGCAAAGTAACTAATCTTTTGATGTTGAAAGGAA
 AAAGCCAGGCTTTCTTAGAAATGGCTTCTGAGGAAGCTGCCGTTACTATGGTGAATTATTACACTCTAT
 TACTCCTCACCTTCGAAGCCAGCCTGTTTATATTCAGTATTCCAATCACAGAGAAGTAAAGACTGACAAT
 CTACCTAATCAAGCTCGAGCCAAAGCTGCACTGCAGGCTGTCAGTGCCGTCGAATCAGGAAGCCTGGCCC
 TTTCTGGAGGTCCTTCCAATGAAGGCACAGTCTACCTGGGCAGAGCCCTGTGCTCGAATAATTATTGA
 AAACCTCTTTACCTGTACCCTGGAAGTTCTTCATCAGATATTTCTAAATTTGGCACAGTCTTGAAG
 ATTATCACCTTTACAAAGAATAATCAGTTTCAAGCCTTGCTTCAGTATGCTGACCCAGTAAATGCACATT
 ATGCCAAAATGGCTCTGGATGGCCAGAATATCTATAATGCATGCTGCACTCTGCGCATTGACTTCTCCAA
 GCTCACCAGCCTTAATGTGAAATATAATAATGACAAAAGCAGAGACTTCACTCGCTTAGACCTTCTACT
 GGTGATGGCCAGCCATCCCTTGAACCCCTATGGCTGCTGCTTTTGGTGCACCGGTATAATTTCTTAC
 CATATGCAGGGGCTGTGGATTTGCCCCAGCCATTGGATTTCTCAAGCTACAGGTCTATCAGTTCAGC
 TGTTCTGGAGCTCTGGTCTCTACAATCACCTCTTCTGCTGCACTGGAAGGATGGCCATTCTGGG
 GCTAGTGGTATACCAGGAAATCTGTTCTACTCGTCACAAATCTCAATCTGATCTTATCACACCACATG
 GGCTTTTTATCTATTTGGAGTCTATGGTGTACATCGAGTGAAGATTATGTTTAAATAAGAAAGAAAA
 TGCCCTTGTTTTCAGATGGCGGATGCAAAATCAAGCTCAGCTAGCAATGAACCATCTAAGTGGTCAGAGACTT
 TATGGGAAAGTGCTTCGTGCTACACTGTCCAAACATCAAGCAGTACAGCTTCTCGAGAGGGACAAGAAG
 ACCAAGGTCTGACTAAGGATTTAGCAATAGTCTTTGCATCGCTTAAAAAGCCGGGCTCTAAAAACTT
 CCAGAATATCTTCCACCATCAGCCACTCTGCATCTTCCAAACATTCCCCTTCTGTTACAGTGGATGAT
 CTGAAGAACCCTTTTATAGAAGCTGGATGTTTCAAGGCTTTTAAATCTTTCAGAAAGATCGCAAAA
 TGGCGCTCATTCAATTGGGATCTGTGGAAGAAGCAATTCAGGCCCTCATTGAGCTTCATAACCATGACCT
 TGGAGAAAATCACCACTCAGAGTTTCTTCTCAAATCTACAATC

ACGCGTACGCGGCCGCTCGAGCAGAAACTCATCTCAGAAGAGGATCTGGCAGCAAATGATATCCTGGATT
 ACAAGGATGACGACGATAAGGTTTAA

Protein Sequence:

>RC211812 representing NM_005156
 Red=Cloning site Green=Tags(s)

MDGVVTDLITVGLKRGSDLELLSSGIINGPFTMNSSTPSTANGNDSKFKRDRPPCSPSRVLHLRKIPCDV
 TEAEIISLGLPFGKVTNLLMLKGSQAFLEMAEAAVTVNYYTPITPHLRSQPVYIQYSNHRELKTDN
 LPNQARAQALQAVSAVQSGSLALSGGPSNEGTVLPGQSPVLRRIIENLFYPVTLEVLHQIFSKFGTVLK
 IITFTKNNQFQALLQYADPVNAHYAKMALDQONIYNACCTLRIDFSKLTSLNVKYNNDKSRDFTRLDLPT
 GDGQPSLEPPMAAAFAPGIISPYAGAAGFAPAIIGFPQATGLSVPVPGALGPLITSSAVTGRMAIPG
 ASGIPGNSVLLVTNLNPDLPITPHGLFILFGVYGDVHRVKIMFNKKNALVQMDANQAQLAMNHL SGQRL
 YGKVL RATLSKHQAVQLPREGQEDQGLTKDFSNSPLHRFKKPGSKNFQNI FPPSATLHL SNIPPSVTVDD
 LKNLFI EAGCSVKAFKFFQKDRKMAL IQLGSVEEAIQAL IELHNHDL GENHHLRVSFSKSTI

TRTRPLEQKLISEEDLAANDILDYKDDDDKV

Chromatograms:

https://cdn.origene.com/chromatograms/mk8066_h03.zip

Restriction Sites:

SgfI-MluI

Cloning Scheme:


ACCN: NM_005156

ORF Size: 1656 bp

OTI Disclaimer: The molecular sequence of this clone aligns with the gene accession number as a point of reference only. However, individual transcript sequences of the same gene can differ through naturally occurring variations (e.g. polymorphisms), each with its own valid existence. This clone is substantially in agreement with the reference, but a complete review of all prevailing variants is recommended prior to use. [More info](#)

OTI Annotation: This clone was engineered to express the complete ORF with an expression tag. Expression varies depending on the nature of the gene.

Components: The ORF clone is ion-exchange column purified and shipped in a 2D barcoded Matrix tube containing 10ug of transfection-ready, dried plasmid DNA (reconstitute with 100 ul of water).

Reconstitution Method:

1. Centrifuge at 5,000xg for 5min.
2. Carefully open the tube and add 100ul of sterile water to dissolve the DNA.
3. Close the tube and incubate for 10 minutes at room temperature.
4. Briefly vortex the tube and then do a quick spin (less than 5000xg) to concentrate the liquid at the bottom.
5. Store the suspended plasmid at -20°C. The DNA is stable for at least one year from date of shipping when stored at -20°C.

RefSeq: [NM_005156.7](#)

RefSeq Size: 2997 bp

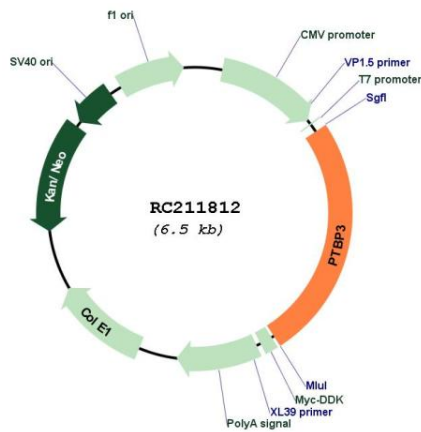
RefSeq ORF: 1659 bp

Locus ID: 9991

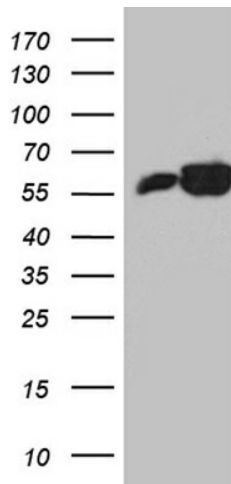
UniProt ID: [O95758](#)

Cytogenetics:	9q32
Domains:	RRM
Protein Families:	Druggable Genome
MW:	59.5 kDa
Gene Summary:	The protein encoded by this gene binds RNA and is a regulator of cell differentiation. The encoded protein preferentially binds to poly(G) and poly(U) sequences in vitro. Several transcript variants encoding different isoforms have been found for this gene. [provided by RefSeq, Oct 2011]

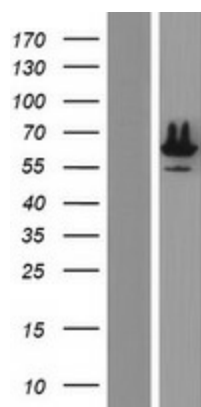
Product images:



Circular map for RC211812



HEK293T cells were transfected with the pCMV6-ENTRY control (Cat# [PS100001], Left lane) or pCMV6-ENTRY PTBP3 (Cat# RC211812, Right lane) cDNA for 48 hrs and lysed. Equivalent amounts of cell lysates (5 ug per lane) were separated by SDS-PAGE and immunoblotted with anti-PTBP3 antibody (Cat# [TA812031]). Positive lysates [LY417476] (100ug) and [LC417476] (20ug) can be purchased separately from OriGene.



Western blot validation of overexpression lysate (Cat# [LY417476]) using anti-DDK antibody (Cat# [TA50011-100]). Left: Cell lysates from untransfected HEK293T cells; Right: Cell lysates from HEK293T cells transfected with RC211812 using transfection reagent MegaTran 2.0 (Cat# [TT210002]).