

Product datasheet for RC211809

SENP6 (NM_015571) Human Tagged ORF Clone

Product data:

Product Type:	Expression Plasmids
Product Name:	SENP6 (NM_015571) Human Tagged ORF Clone
Tag:	Myc-DDK
Symbol:	SENP6
Synonyms:	SSP1; SUSP1
Mammalian Cell Selection:	Neomycin
Vector:	pCMV6-Entry (PS100001)
E. coli Selection:	Kanamycin (25 ug/mL)
ORF Nucleotide Sequence:	>RC211809 representing NM_015571 Red=Cloning site Blue=ORF Green=Tags(s)

TTTTGTAATACGACTCACTATAGGGCGGCCGGGAATTCGTCGACTGGATCCGGTACCGAGGAGATCTGCC
GCC**CGATCGCC**

ATGGCGGCCGGCAAGAGCGGCGGTAGCGCAGGGGAGATTACTTTTCTGGAAGCTTTGGCTAGATCAGAGT
CTAAGAGAGATGGAGGTTTTAAAAATAATTGGAGCTTTGATCATGAAGAAGAAAGTGAAGGAGATACAGA
TAAAGATGGGACAAATCTGCTCAGTGTGGATGAAGATGAGGATTCTGAAACCTCAAAGGAAAAAGTTA
AATCGTCGATCTGAAATGTTGCTAATAGCTCTGGTGAATTCATCTTGAAGACATATGTAAGACGAAACA
AGTCTGAAAGTTTTAAACTTTGAAAGCAACCCAATTGGACTTAACATGTTGAGCAACAATAAGAAATT
GAGTGAAAATATGCAAAATACGTCAATTATGTTCTGGAACGTAGTTCATGGTAGACGTTTTTCATCATGCT
CATGCACAGATACCAAGTAGTAAAAACAGCAGCCAAAGCAGTCTGGACCGAAAAGAAAGGAAAGAATACC
CACCTCATGTCCAAAAGTTGAAATTAATCCTGTAAGGTTAAGTCGGCTCCAAGGTGTTGAACGTATAAT
GAAGAAAACAGAAGAGTCCGAATCACAAGTGGAGCCTGAAATTAAGAGGAAAGTACAACGAAAACGGCAC
TGTAGTACCTATCAGCCTACTCCTCTATCTCCTGCTTCAAAAAATGTTTAAACCATTTAGAGGATT
TGCAAAGAAATGCAGACAAGCTATTACTTTGAATGAGTCTACTGGACCATTATTAAGAACGTCAATTCA
TCAGAATCTGGAGGACAGAAGTCACAAAACACAGGATTAACAACCAAGAAGTTTTATGGCAACAATGTG
GAAAAGGTTCCAATTGATATTATTGTGAATTGTGATGACAGTAAACACACTTATTACAGACTAATGGAA
AAGTCATTTTACCTGGGGCAAAAATACCCAAAATCACAACTTGAAGAAGGAAAACAAGTTTGTGAGA
CCTAAATGATCCAATCATTTTGTCCAGTATGATGATGATGACAACGACAGAACTAACAGAAGAGAAAGC
ATATCTCCTCAGCCTGCTGATTCAGCATGTTCTTCCCCTGCACCATCCACTGGAAAAGTAGAAGCAGCAC
TAAATGAAAATACTTGCAGAGCAGAGCGTGAACACGAAGCATTCCAGAAGACTCAGAGTTAAATACAGT
TACATTGCCAAGAAAAGCAAGAATGAAAGACCAGTTTGGCAATTCTATTATCAACACACCTCTGAAACGT
CGTAAAGTGTCTCAAGAACCTCCAGATGCTTTAGCTTTAAGCTGCCAAAGTTCCTTTGACAGTGTCA
TTTTAACTGTGCAAGTATACGAGTAGGAACACTTCCGGCTGTTAATAGACCTGTAATTTTTGTTT
AGATTTTATCAAGATACGCTAGACGAACCAAGACCATGATCCTGTAGAGATTATATTAATACCTCTGAT



[View online »](#)

CTAACTAAATGTGAATGGTGAATGTCCGAAAATTACCTGTAGTGTTCCTCAAGCAATCCAGCAGTTT
 ATCAAAGCTGAGCATCCAACCTGCAATGAATAAGGAGGATAAAGTTTGGAAATGATTGTAAGGAGTAAA
 TAAATTAACAAATTTAGAAGAACAATATAAATTTAATTTTCAAAATGGCCTTGATCTCCGGCAAT
 ATGGTATTTGAAAGTATCATTAAATGAAATGGTATAAAGAATAACATCTCCAATTTTTTTCGCAAAATTC
 CCTTTGAAGAAGCTAATGGCAGACTTGTGCCTGTACAAGAACCTATGAAGAGAGCATCAAAGGAAGTTG
 TGGGCAAAAGGAAAACAAAATTTAACTGTATCATTTGAATCTAAAATACAACCTAGAAGCAAAACAAGAA
 TTTGAGTTTTTTGATGAAGAAGAAGAACTGGAGAAAACCAACCATCTTCATTGGCCAGTAGAAAAGT
 TGATAGTATATCCACCACCTCCAGCTAAGGGAGGCATCTCTGTTACCAATGAGGACCTGCACTGTCTAAA
 TGAAGGAGAATTTTTAAATGATGTTATTATAGACTTTTTTTGAAATACTTGGTGCTTGAAAAACCTGAAG
 AAGGAAGACGCTGACCGAATTCATATTCAGTTCTTTTTTCTATAAACGCCTTAATCAGAGAGAGAGGA
 GAAATCATGAAACAATACTGTCAATACAGCAAAAACGGCATGGGAGAGTAAAAACATGGACCCGGCA
 CGTAGATATTTTTGAGAAGGATTTATTTTTGTACCCCTTAATGAAGCTGCACACTGGTTTTTGGCTGTT
 GTTTGTTTCCCGGTTTGGAAAACCAAGTATGAACCTAATCCTCATTACCATGAAAATGCTGTCATAC
 AGAAATGTTCAACTGTAGAGGACAGTTGATTTCTTCTCAGCCAGTAAAATGGAGAGTTGTTACAAAA
 CTCTTCTGCCAAGCCTGTAATTAAGAAGATGCTAAACAAAAACATTGCATAGCTGTAATTGATTCCAAT
 CCTGGGCAGGAAGAAAGTGACCCTCGTTATAAGAGAAACATATGCAGTGTAAAATACAGTGTGAAAAAA
 TAAATCATACTGCGAGTAAAATGAAGAATTCAATAAAGGAGAATCTACATCCCAGAAAAGTTGCTGATAG
 GACTAAAAGTGAGAAATGGCCTACAGAATGAAAAGTTAAGTTCCACACATCATACAGATGGCTTAAGCAAA
 ATCAGACTAAACTATAGCGATGAATCACCTGAAGCTGGTAAAAAGCTTGAAGATGAACTCGTCGACTTCT
 CAGAAGATCAGGATAACCAAGGATGATAGCAGTGACGATGGATTCTCGTGATGACAACCTGCAGTTCAGA
 AATAGGACAGTGGCATTAAAGCCTACTATCTGTAACAACCTTGATCCTACTTATGGACTCACTCCGA
 GGCCCTTCTCGGTCAAATGTTGTCAAATTTTAAAGAGAGTATTTAGAAGTGGAAATGGGAAGTTAAAAAG
 GAAGCAAAAGAAGTTTTTCCAAAGATGTTATGAAGGGCTAATCCAAAAGTACCACAGCAAAAACACTT
 CAGTGACTGTGGTGTATATGATTGCAAGTATGTAGAGAGCTTTTTTGGAGAATCCAATCTCAGTTTTGAA
 CTACCTATGAATTTGGCAAAGTGGTTCTCCACCAAGAATGAGAACAAAAGAGAGAAGAAATCCGAAACA
 TAATTCTGAAGCTACAGGAAGATCAGAGCAAAAGAGAAAAGAAAGCATAAGGACACTTACTCAACAGAAGC
 ACCTTTAGGCGAAGGAACAGAACAATGTGTCAATAGTATCTCAGAT

ACGCGTACGCGGCCGCTCGAGCAGAAACTCATCTCAGAAGAGGATCTGGCAGCAATGATATCCTGGATT
 ACAAGGATGACGACGATAAGGTTTAA

Protein Sequence:

>RC211809 representing NM_015571
 Red=Cloning site Green=Tags(s)

MAAGKSGGSAGEITFLEALARSESKRDGGFKNNWSFDHEEESEGDTDKDGTNLLSVDEDEDSETSCKGKL
 NRRSEIVANSSGEFILKTYVRRNKSEFKTLKGNPIGLNMLSNNKLSENMQNTSLCSGTVVHGRFFHHA
 HAQIPVVKTAQSSLDKERKEYPPHVQKVEINPVRLSRLQGVVERIMKKTEESESQVEPEIKRKYVQQRH
 CSTYQPTPPLSPASKKCLTHLEDLQRNCRQAITLNESTGPLLRTSIHQNSGGQKSQNTGLTTKKFYGNV
 EKVPIDIIVNCDDSKHTYLQTNKGVILPGAIPKITNLKERKTSLSLNDPIILSSDDDDNDRTNRRES
 I SPQPADSACSSPAPSTGKVEALNENTCRAERELRSIPDESELNTVTLPRKARMKDQFGNSIINTPLKR
 RKVFSQEPDALALSCQSSFDSVILNCRSIRVGTFRLLIEPVIFCLDFIKIQLDEPDHDPVEIILNTSD
 LTKCEWCNVRKLPVVFLLQAIQVYVQKLSIQLQMNKEDKVNWDCKGVNKLNLLEEYIILIFQNGLDPPAN
 MVFESIINEIGIKNNISNFFAKIPFEEANGRLVACTRTYEEESIKGSCGQKENKIKTVSFSKIQLRKQE
 FQFFDEEEETGENHTIFIGPVEKLIYVPPPAKGGISVTNEDLHCLNEGEFLNDVIDFYLYLVLEKLEK
 KEDADRIHIFSSFFYKRLNQRERRNHETTNL SIQQKRHGRVKTWTRHVDIFEKDFIFVPLNEAAHWFLAV
 VCFPGLEKPKYEPNPHYHENAVIQKSTVEDSCISSASEMESCSQNSAKPVIKMLNKKHCIAVIDSN
 PGQEE SDPRYKRNICSVKYSVKKINHTASENEEFNKGESTSQKVADRTKSENGLQNESLSTHTDGLSK
 IRLNYSDESPEAGKMLEDELVDFSEDQNDQDSSDDGFLADDNCSSEIGQWHLKPTICKQPCILLMDSL
 GPSRSNVVKILREYLEVEWEVKKGSKRSFSDVMKGSNPVQNNFSDCGVYVLYQVYVFFENPILSFE
 LPMNLANWFPPPRMRTKREEIRNIILKLQEDQSKEKRKHKDYSTEAPLGEGTEQC VNISID

TRTRPLEQKLISEEDLAANDILDYKDDDDKV

Chromatograms: https://cdn.origene.com/chromatograms/mk8009_d01.zip
Restriction Sites: SgfI-MluI
Cloning Scheme:



ACCN: NM_015571
ORF Size: 3336 bp

OTI Disclaimer: The molecular sequence of this clone aligns with the gene accession number as a point of reference only. However, individual transcript sequences of the same gene can differ through naturally occurring variations (e.g. polymorphisms), each with its own valid existence. This clone is substantially in agreement with the reference, but a complete review of all prevailing variants is recommended prior to use. [More info](#)

OTI Annotation: This clone was engineered to express the complete ORF with an expression tag. Expression varies depending on the nature of the gene.

Components: The ORF clone is ion-exchange column purified and shipped in a 2D barcoded Matrix tube containing 10ug of transfection-ready, dried plasmid DNA (reconstitute with 100 ul of water).

- Reconstitution Method:**
 1. Centrifuge at 5,000xg for 5min.
 2. Carefully open the tube and add 100ul of sterile water to dissolve the DNA.
 3. Close the tube and incubate for 10 minutes at room temperature.
 4. Briefly vortex the tube and then do a quick spin (less than 5000xg) to concentrate the liquid at the bottom.
 5. Store the suspended plasmid at -20°C. The DNA is stable for at least one year from date of shipping when stored at -20°C.

RefSeq: [NM_015571.1](#), [NP_056386.1](#)
RefSeq Size: 4210 bp
RefSeq ORF: 3339 bp
Locus ID: 26054

UniProt ID: [Q9GZR1](#)

Cytogenetics: 6q14.1

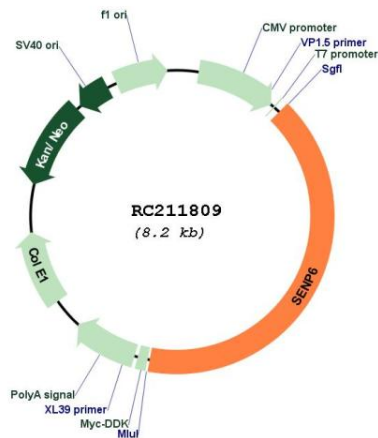
Domains: Peptidase_C48

Protein Families: Druggable Genome, Protease

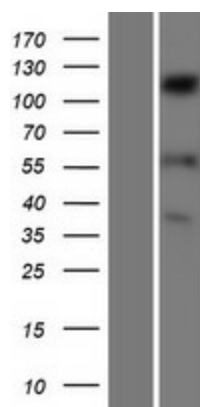
MW: 126 kDa

Gene Summary: Ubiquitin-like molecules (UBLs), such as SUMO1 (UBL1; MIM 601912), are structurally related to ubiquitin (MIM 191339) and can be ligated to target proteins in a similar manner as ubiquitin. However, covalent attachment of UBLs does not result in degradation of the modified proteins. SUMO1 modification is implicated in the targeting of RANGAP1 (MIM 602362) to the nuclear pore complex, as well as in stabilization of I-kappa-B-alpha (NFKBIA; MIM 164008) from degradation by the 26S proteasome. Like ubiquitin, UBLs are synthesized as precursor proteins, with 1 or more amino acids following the C-terminal glycine-glycine residues of the mature UBL protein. Thus, the tail sequences of the UBL precursors need to be removed by UBL-specific proteases, such as SENP6, prior to their conjugation to target proteins (Kim et al., 2000 [PubMed 10799485]). SENPs also display isopeptidase activity for deconjugation of SUMO-conjugated substrates (Lima and Reverter, 2008 [PubMed 18799455]).[supplied by OMIM, Jun 2009]

Product images:



Circular map for RC211809



Western blot validation of overexpression lysate (Cat# [LY414436]) using anti-DDK antibody (Cat# [TA50011-100]). Left: Cell lysates from untransfected HEK293T cells; Right: Cell lysates from HEK293T cells transfected with RC211809 using transfection reagent MegaTran 2.0 (Cat# [TT210002]).