

Product datasheet for RC211797

Oxytocin Receptor (OXTR) (NM_000916) Human Tagged ORF Clone

Product data:

Product Type:	Expression Plasmids
Product Name:	Oxytocin Receptor (OXTR) (NM_000916) Human Tagged ORF Clone
Tag:	Myc-DDK
Symbol:	Oxytocin Receptor
Synonyms:	OT-R; OTR
Mammalian Cell Selection:	Neomycin
Vector:	pCMV6-Entry (PS100001)
E. coli Selection:	Kanamycin (25 ug/mL)
ORF Nucleotide Sequence:	>RC211797 representing NM_000916 Red=Cloning site Blue=ORF Green=Tags(s)

TTTTGTAATACGACTCACTATAGGGCGGCCGGAATTCGTCGACTGGATCCGGTACCGAGGAGATCTGCC
GCC**CGATCGCC**

ATGGAGGGCGCGCTCGCAGCCAACCTGGAGCGCCGAGGCAGCCAACGCCAGCGCCGCGCCGCGGGGGCCG
AGGGCAACCGCACCGCCGACCCCGCGGCGCAACGAGGCCCTGGCGCGCGTGGAGGTGGCGGTGCTGTG
TCTCATCTGCTCTGGCGCTGAGCGGGAATGCGTGTGTGCTGCTGGCGTGGCACCACAGCCAGAAG
CACTCGCGCTCTTCTTTCATGAAGCACCTAAGCATCGCCGACCTGGTGGTGGCAGTGTTCAGGTGC
TGCCGCGAGTTGCTGTGGACATCACCTCCGCTTCTACGGGCCGACCTGCTGTGCCGCTGGTCAAGTA
CTTGCAGGTGGTGGCATGTTCCGCTCCACCTACCTGCTGCTGCTCATGTCCCTGGACCGCTGCCTGGCC
ATCTGCCAGCCGCTGCGCTCGCTGCGCCGCCGACCGACCGCCTGGCAGTGTGCGCCACGTGGCTCGGCT
GCCTGGTGGCCAGCGCGCCGAGGTGCACATCTTCTCTGCGCGAGGTGGCTGACGGCGTCTTCGACTG
CTGGGCGCTTTCATCCAGCCCTGGGGACCCAAGGCCTACATCACATGGATCACGCTAGCTGTCTACATC
GTGCCGGTTCATCGTGTGCTGCTGCTACGGCCTTATCAGTTCAGATCTGGCAGAATTGCGGCTCA
AGACCGCTGCAGCGCGCGGCCGAGGCCAGAGGGCGCGCGGCTGGCGATGGGGGCGCGTGGCCCT
GGCGGTGTCAGCAGCGTCAAGTTCATCTCCAAGGCCAAGATCCGACCGTCAAGATGACTTTCATCATC
GTGCTGGCCTTTCATCGTGTGCTGGACGCTTCTTCTTCTGTCAGATGTGGAGCGTCTGGGATGCCAAG
CGCCCAAGGAAGCCTCGGCCTTTCATCATCGTGTGCTGCTGCTGCGCCAGCCTCAACAGCTGCTGCAACCCCTG
GATCTACATGCTGTTACGGGCCACCTTCTCCAGAACTCGTGCAGCGCTTCTGTGCTGCTCCGCCAGC
TACCTGAAGGGCAGACGCTGGGAGAGACGAGTGCCAGCAAAAAGAGCAACTCGTCTCCTTGTCTGATCC
GCCATCGCAGCTCCAGCCAGAGGAGTGTCTCCAGCCATCCAGGCGAGCGGACCG

AG**CGGACCG**ACGCGTACGCGGCCGCTCGAGCAGAACTCATCTCAGAAGAGGATCTGGCAGCAAATGATATCC
TGGATTACAAGGATGACGACGATAAGGTTTAA



Protein Sequence: >RC211797 representing NM_000916
Red=Cloning site Green=Tags(s)

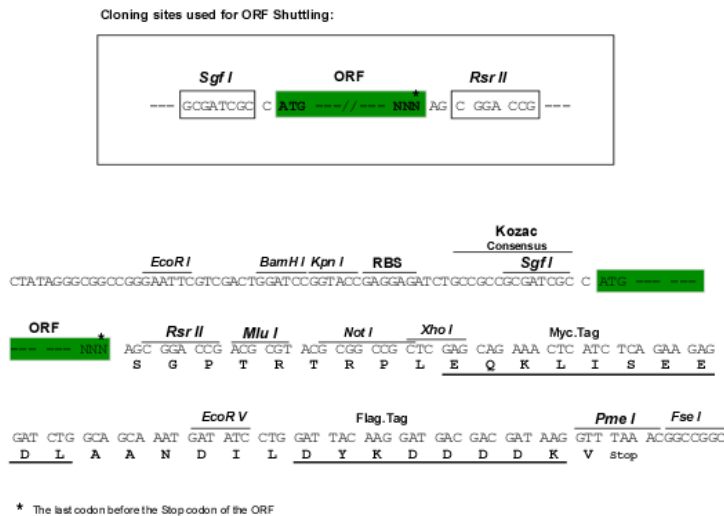
MEGALAANWSAEANASAAPPGAEGNRTAGPPRRNEALARVEVAVLCLILLLALSGNACVLLALRTTRQK
 HSRLFFFMKHL SIADLVAVFQVLPQLLWDITFRFYGPDLLCRLVKYLQVVGMFASYLLLLMSLDRCLA
 ICQPLRSLRRRTDRLAVLATWLGCLVASAPQVHIFSLREVADGVFDCWAVFIQPWGPKEYITWITLAVYI
 VPIVLAACYGLISFKIWQNLRLKTAATAAAAEAPEGAAAGDGGRRVALARVSSVKLISKAKIRTVKMTFII
 VLAFAIVCWTPFFVFQMWVWDANAPKEASAFIIVMLLASLNSCCNPWIYMLFTGHLFHEL VQRFLCCSAS
 YLKGRRLGETSASKKSNSSSFVLSHRSSQRSCSQPSTASGP

SGPTRTRRLEQKLI SEEDLAANDILDYKDDDDKV

Chromatograms: https://cdn.origene.com/chromatograms/mk6187_e06.zip

Restriction Sites: SgfI-RsrII

Cloning Scheme:



ACCN: NM_000916

ORF Size: 1176 bp

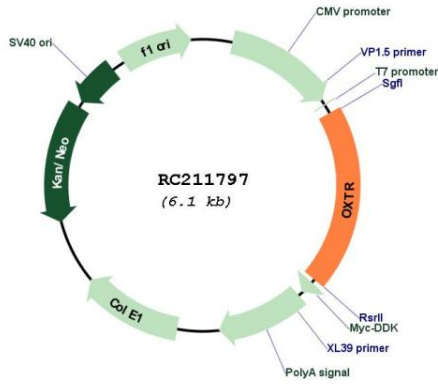
OTI Disclaimer: The molecular sequence of this clone aligns with the gene accession number as a point of reference only. However, individual transcript sequences of the same gene can differ through naturally occurring variations (e.g. polymorphisms), each with its own valid existence. This clone is substantially in agreement with the reference, but a complete review of all prevailing variants is recommended prior to use. [More info](#)

OTI Annotation: This clone was engineered to express the complete ORF with an expression tag. Expression varies depending on the nature of the gene.

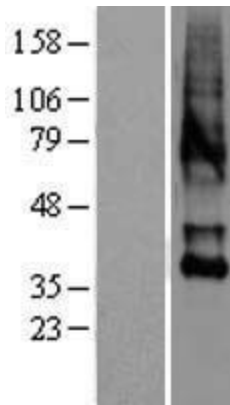
Components: The ORF clone is ion-exchange column purified and shipped in a 2D barcoded Matrix tube containing 10ug of transfection-ready, dried plasmid DNA (reconstitute with 100 ul of water).

Reconstitution Method:	<ol style="list-style-type: none">1. Centrifuge at 5,000xg for 5min.2. Carefully open the tube and add 100ul of sterile water to dissolve the DNA.3. Close the tube and incubate for 10 minutes at room temperature.4. Briefly vortex the tube and then do a quick spin (less than 5000xg) to concentrate the liquid at the bottom.5. Store the suspended plasmid at -20°C. The DNA is stable for at least one year from date of shipping when stored at -20°C.
Note:	Plasmids are not sterile. For experiments where strict sterility is required, filtration with 0.22um filter is required.
RefSeq:	NM_000916.3 , NP_000907.2
RefSeq Size:	4361 bp
RefSeq ORF:	1170 bp
Locus ID:	5021
UniProt ID:	P30559
Cytogenetics:	3p25.3
Domains:	7tm_1
Protein Families:	Druggable Genome, GPCR, Transmembrane
Protein Pathways:	Calcium signaling pathway, Neuroactive ligand-receptor interaction
MW:	42.6 kDa
Gene Summary:	The protein encoded by this gene belongs to the G-protein coupled receptor family and acts as a receptor for oxytocin. Its activity is mediated by G proteins which activate a phosphatidylinositol-calcium second messenger system. The oxytocin-oxytocin receptor system plays an important role in the uterus during parturition. [provided by RefSeq, Jul 2008]

Product images:



Circular map for RC211797



Western blot validation of overexpression lysate (Cat# [LY400333]) using anti-DDK antibody (Cat# [TA50011-100]). Left: Cell lysates from untransfected HEK293T cells; Right: Cell lysates from HEK293T cells transfected with RC211797 using transfection reagent MegaTran 2.0 (Cat# [TT210002]).