

Product datasheet for **RC211794**

ARHGAP9 (NM_001080157) Human Tagged ORF Clone

Product data:

Product Type:	Expression Plasmids
Product Name:	ARHGAP9 (NM_001080157) Human Tagged ORF Clone
Tag:	Myc-DDK
Symbol:	ARHGAP9
Synonyms:	10C; RGL1
Mammalian Cell Selection:	Neomycin
Vector:	pCMV6-Entry (PS100001)
E. coli Selection:	Kanamycin (25 ug/mL)



[View online »](#)

ORF Nucleotide
Sequence:

>RC211794 representing NM_001080157
Red=Cloning site Blue=ORF Green=Tags(s)

TTTTGTAATACGACTCACTATAGGGCGGCCGGAATTCGTCGACTGGATCCGGTACCGAGGAGATCTGCC
GCCGCGATCGCC

ATGCTATCCAGCCGGTGGTGGCCAAGTTCTGGGGATCCTAGGGCTGGGCCCCGAAGCCCTCTCGGG
GATCCCAGCTCTGTGCCCTCTATGCCTTTACTTATACTGGGGCAGATGGCCAGCAGGTGTCTCTGGCTGA
AGGGGATAGGTTCTACTGCTTCGAAAGACCAACTCCGACTGGTGGTTGGCAAGACGCCTAGAAGCTCCC
TCCACCTCTGACCCATCTTCGTCGCCAGCAGCCTATATGATAGAGGAATCCATCCCTTCCAGAGTCCAA
CTACCGTCATCCCGGCCAATTGCTCTGGACTCCTGGGCCGAAGTTGTTTCATGGTTCCCTGGAGGAGTT
GTCTCAGGCCCTCCAAGCAGGGCTCAGGCTAGCTCGGAGCAGCCTCTCCACTTCCCGCAAATGTGT
AGGAGCGTCAGCACTGACAATCTGAGCCCCAGCCTTCTGAAGCCTTCCAGGAAGGACCAAGCGGAAGAT
CCCTCTCCAGGAAGACTTGCCGTGAGAAGCCAGTGCCAGCACAGCAGGCCCCAGCCCCATGTCAGA
GCCCCCTGTGTACTGTAACTGGTGGACCTTCGCCGTGTCTCGGTCCCACCCAGGCCCTGCATGC
CCCTGTGTCAGAGGCTGGATGCCTGGGAGCAGCACTGGACCCAACTCTGGACGCTGTTCTACATAA
ATTCACTGACTGGCTGCAAGTCCTGGAAGCCCCGCGCCGAGTCGCAGCGAGACGAACCTGGCTCCAT
GGAGGGGACACAGACCCTGAAGAGGAACAATGATGTCCTGCAACCTCAGGCAAAGGGCTTCAGATCTGAC
ACAGGGACCCAGAACCCTTGACCCACAGGGTCACTCAGCCTCAGCCAACGCACCTCGCAGCTTGACC
CTCCAGCCTTGCAAGGCCCTCGACCTCTGCCGAGCTCCTGGACGACCCCATGAGGTGGAAAAGTCGGG
TCTGCTCAACATGACCAAGATTGCCAAGGGGGCGCAAGCTCAGGAAGAACTGGGGCCCGTCTTGGGTG
GTGTTAACGGGTAACAGCCTGGTGTCTACCGAGAGCCACCGCCGACAGCGCCCTCCTCAGGCTGGGGAC
CAGCGGGTAGCCGGCCGAAAGTAGCGTGGACCTGCGCGGGCGGCCCTGGCGCACGGCCGCCACCTGTC
CAGCCCGCCGAACGTCTGCACATCCGACAGATCCCTGGCCACGAGTTCTGCTGCAGTCGGACACGAG
ACAGAGCTGCGAGCCTGGCACCGCGCTGCGGACTGTCATCGAGCGGCTGGATCGGGAGAACCCTGG
AGCTGCGTCTGTGCGGCTCTGGACCCGCGGAGCTGAGCGCCGGGAGGACGAAGAAGAGGAGTCGGAGCT
GGTGTCCAAGCCGCTGCTGCGCCTCAGCAGCCGCGGAGCTCCATTGGGGGCCCGAAGGCACCGAGCAG
AACCGGTGCGCAACAACTAAAGCGGCTCATCGCAAGAGACCGCCCTTACAAAGCCTGCAGGAGCGGG
GTCTGCTCCGAGACCAGGTGTTGCGCTGCCAGTTGGAATCACTCTGCCAGCGGGAAGGAGACACGGTGCC
CAGCTTTTTCGGCTCTGCATTGCTGCTGTGGATAAAAGAGGTCTAGATGTGGATGGCATTATCGGGTG
AGCGGGAACCTGGCAGTGGTCCAGAAGCTTCGCTTCTGGTGGACAGAGCGGTGCGGTACCTCCGATG
GGAGGTATGTGTTCCAGAACAGCCAGGACAAGAAGGTTCGGTTAGATTTGGACAGTACTGAGTGGGATGA
CATTTCATGTGGTACCGGAGCCCTGAAGCTTTTTCTCCGGGAGCTGCCCCAGCCTCTGGTCCACCACCTG
CTGCTGCCCATTTCCGTGCTGCCCTTGGG

ACGCGTACGCGGCCGCTCGAGCAGAACTCATCTCAGAAGAGGATCTGGCAGCAAATGATATCCTGGATT
ACAAGGATGACGACGATAAGGTTTAA

Protein Sequence: >RC211794 representing NM_001080157
 Red=Cloning site Green=Tags(s)

MLSSRWVPSSWGILGLGPRSPRGSQCALYAFTYTGADGQQVSLAEGDRFLLLRTNSDWLARRLEAP
 STSRPIFVPAAYMIEESIPSQSPTTVIPGQLLWTPGPKLFHGSLEELSQUALPSRAQASSEQPPLPRKMC
 RSVSTDNLSPSLLKPFQEGPSGRSLSQEDLPSEASTAGPQPLMSEPPVYCNLVDLRRCPRSPPPGPAC
 PLLQRLDAWEQHLDPNNGRCFYINSLTGCKSWKPPRRSRSETNPGSMEGTQTLKRNDVLPQAKGFRSD
 TGTPEPLDPQGSLSLSQRTSQLDPPALQAPRPLQQLDDPHEVEKSGLLNMTKIAQGGKRLRKNWGFSWV
 VLTGNLSLVFYREPPPTAPSSGWGPAGSRPESSVDLGAALAHGRHLSSRRNVLHIRTIPGHEFLQSDHE
 TELRAWHRALRTVIERLDRENPLELRSGSGPAEL SAGEDEEEESELVSKPLRLSSRRSSIRGPEGTEQ
 NRVRNKLRKLIARPLQLSQERGLLRDQVFGCQLES LCQREGDTPVPSFLRCLIAAVDKRGLDVGDIYRV
 SGNLAVVQKLRFLVDRERAVTSDGRYVFPEQPQEGRLDLSTEWDDIHVVTGALKLFLRELQPLVPL
 LLPHFRAALG

TRTRPLEQKLISEEDLAANDILDYKDDDDKV

Chromatograms: https://cdn.origene.com/chromatograms/mk8071_a08.zip

Restriction Sites: SgfI-MluI

Cloning Scheme:



ACCN: NM_001080157

ORF Size: 1920 bp

OTI Disclaimer: The molecular sequence of this clone aligns with the gene accession number as a point of reference only. However, individual transcript sequences of the same gene can differ through naturally occurring variations (e.g. polymorphisms), each with its own valid existence. This clone is substantially in agreement with the reference, but a complete review of all prevailing variants is recommended prior to use. [More info](#)

OTI Annotation: This clone was engineered to express the complete ORF with an expression tag. Expression varies depending on the nature of the gene.

Components: The ORF clone is ion-exchange column purified and shipped in a 2D barcoded Matrix tube containing 10ug of transfection-ready, dried plasmid DNA (reconstitute with 100 ul of water).

Reconstitution Method:

1. Centrifuge at 5,000xg for 5min.
2. Carefully open the tube and add 100ul of sterile water to dissolve the DNA.
3. Close the tube and incubate for 10 minutes at room temperature.
4. Briefly vortex the tube and then do a quick spin (less than 5000xg) to concentrate the liquid at the bottom.
5. Store the suspended plasmid at -20°C. The DNA is stable for at least one year from date of shipping when stored at -20°C.

RefSeq: [NM_001080157.2](#)

RefSeq Size: 2604 bp

RefSeq ORF: 1923 bp

Locus ID: 64333

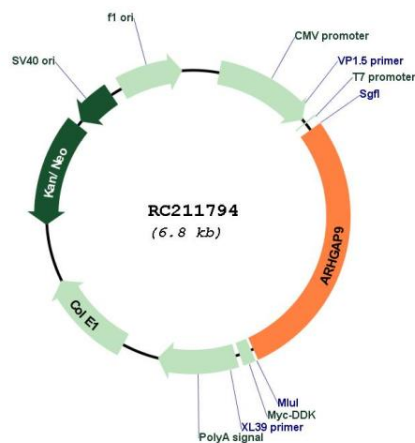
UniProt ID: [Q9BRR9](#)

Cytogenetics: 12q13.3

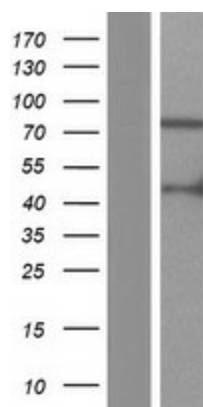
MW: 70.7 kDa

Gene Summary: This gene encodes a member of the Rho-GAP family of GTPase activating proteins. The protein has substantial GAP activity towards several Rho-family GTPases in vitro, converting them to an inactive GDP-bound state. It is implicated in regulating adhesion of hematopoietic cells to the extracellular matrix. Multiple transcript variants encoding different isoforms have been found for this gene. [provided by RefSeq, Jul 2008]

Product images:



Circular map for RC211794



Western blot validation of overexpression lysate (Cat# [LY421604]) using anti-DDK antibody (Cat# [TA50011-100]). Left: Cell lysates from untransfected HEK293T cells; Right: Cell lysates from HEK293T cells transfected with RC211794 using transfection reagent MegaTran 2.0 (Cat# [TT210002]).