

## Product datasheet for **RC211790**

### **RPL22L1 (NM\_001099645) Human Tagged ORF Clone**

#### Product data:

**Product Type:** Expression Plasmids  
**Product Name:** RPL22L1 (NM\_001099645) Human Tagged ORF Clone  
**Tag:** Myc-DDK  
**Symbol:** RPL22L1  
**Mammalian Cell Selection:** Neomycin  
**Vector:** pCMV6-Entry (PS100001)  
**E. coli Selection:** Kanamycin (25 ug/mL)  
**ORF Nucleotide Sequence:** >RC211790 representing NM\_001099645  
**Red=Cloning site Blue=ORF Green=Tags(s)**

TTTTGTAATACGACTCACTATAGGGCGGCCGGGAATTCGTCGACTGGATCCGGTACCGAGGAGATCTGCC  
GCC**CGATCGCC**

ATGGCGCCGCAGAAAGACAGGAAGCCCAAGAGGTCAACCTGGAGGTTTAAATTTGGACCTTACTCATCCAG  
TAGAAGATGGAATTTTGGATTCTGGAAATTTGAGCAATTTCTACGGGAGAAGGTTAAAGTCAATGGCAA  
AACTGGAAATCTCGGGAATGTTGTTACATTGAACGCTTCAAGAATAAAATCACAGTTGTTTCTGAGAAA  
CAGTTCTCTAAAAGGTATTTGAAATACCTACCAAGAAATACCTTAAGAAGAACAATCTTCGTGATTGCC  
TTCGAGTGGTTGCATCTGACAAGGAGACCTACGAATTCGTTACTTCCAGATTAGTCAAGATGAAGATGA  
ATCAGAGTCGGAGGAC

**ACGCGT**ACGCGGCCGCTCGAGCAGAAACTCATCTCAGAAGAGGATCTGGCAGCAAATGATATCCTGGATT  
ACAAGGATGACGACGATAAGGTTTAA

**Protein Sequence:** >RC211790 representing NM\_001099645  
**Red=Cloning site Green=Tags(s)**

MAPQKDRPKRSTWRFNLDLTHPVEDGIFDSGNFEQFLREKVKVNGKTGNLGNVVHIERFKNKITYVSEK  
QFSKRYLKYLTKKYLKKNLRLDWRVVASDKETYELRYFQISQDEDESESED

**TR**TRPLEQKLISEEDLAANDILDYKDDDDKV

**Chromatograms:** [https://cdn.origene.com/chromatograms/mk8103\\_d07.zip](https://cdn.origene.com/chromatograms/mk8103_d07.zip)

**Restriction Sites:** Sgfl-MluI



[View online »](#)

**Cloning Scheme:**


**ACCN:** NM\_001099645

**ORF Size:** 366 bp

**OTI Disclaimer:** The molecular sequence of this clone aligns with the gene accession number as a point of reference only. However, individual transcript sequences of the same gene can differ through naturally occurring variations (e.g. polymorphisms), each with its own valid existence. This clone is substantially in agreement with the reference, but a complete review of all prevailing variants is recommended prior to use. [More info](#)

**OTI Annotation:** This clone was engineered to express the complete ORF with an expression tag. Expression varies depending on the nature of the gene.

**Components:** The ORF clone is ion-exchange column purified and shipped in a 2D barcoded Matrix tube containing 10ug of transfection-ready, dried plasmid DNA (reconstitute with 100 ul of water).

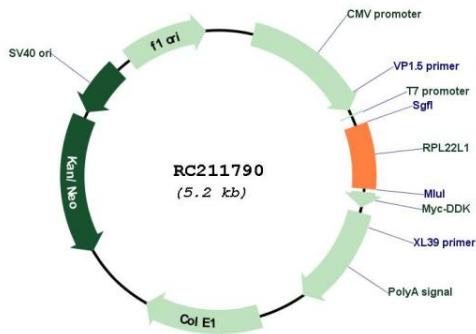
- Reconstitution Method:**
1. Centrifuge at 5,000xg for 5min.
  2. Carefully open the tube and add 100ul of sterile water to dissolve the DNA.
  3. Close the tube and incubate for 10 minutes at room temperature.
  4. Briefly vortex the tube and then do a quick spin (less than 5000xg) to concentrate the liquid at the bottom.
  5. Store the suspended plasmid at -20°C. The DNA is stable for at least one year from date of shipping when stored at -20°C.

**Note:** Plasmids are not sterile. For experiments where strict sterility is required, filtration with 0.22um filter is required.

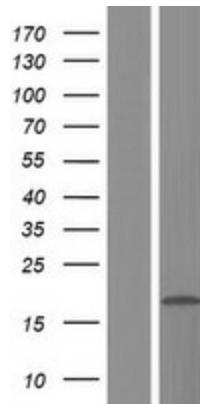
**RefSeq:** [NM\\_001099645.2](#)

**RefSeq Size:** 1978 bp

RefSeq ORF: 369 bp  
 Locus ID: 200916  
 UniProt ID: [Q6P5R6](#)  
 Cytogenetics: 3q26.2  
 Protein Pathways: Ribosome  
  
 MW: 14.6 kDa

**Product images:**


Circular map for RC211790



Western blot validation of overexpression lysate (Cat# [LY420471]) using anti-DDK antibody (Cat# [TA50011-100]). Left: Cell lysates from untransfected HEK293T cells; Right: Cell lysates from HEK293T cells transfected with RC211790 using transfection reagent MegaTran 2.0 (Cat# [TT210002]).