

Product datasheet for RC211786

GJB1 (NM_001097642) Human Tagged ORF Clone

Product data:

Product Type:	Expression Plasmids
Product Name:	GJB1 (NM_001097642) Human Tagged ORF Clone
Tag:	Myc-DDK
Symbol:	GJB1
Synonyms:	CMTX; CMTX1; CX32
Mammalian Cell Selection:	Neomycin
Vector:	pCMV6-Entry (PS100001)
E. coli Selection:	Kanamycin (25 ug/mL)
ORF Nucleotide Sequence:	>RC211786 representing NM_001097642 Red=Cloning site Blue=ORF Green=Tags(s)

TTTTGTAATACGACTCACTATAGGGCGGCCGGAATTCGTCGACTGGATCCGGTACCGAGGAGATCTGCC
GCC**CGGATCGCC**

ATGAAGTGGACAGGTTTGTACACCTTGCTCAGTGGCGTGAACCGGCATTCTACTGCCATTGGCCGAGTAT
GGCTCTCGGTCATCTTCATCTTCAGAATCATGGTCTGGTGGTGGCTGCAGAGAGTGTGTGGGGTATGA
GAAATCTTCCTTCATCTGCAACACTCCAGCCTGGCTGCAACAGCGTTTGCTATGACCAATTCTCCCC
ATCTCCCATGTGCGGCTGTGGTCCCTGCAGCTCATCCTAGTTTCCACCCAGCTCTCCTCGTGGCCATGC
ACGTGGCTCACCAGCAACACATAGAGAAGAAAATGCTACGGCTTGAGGGCCATGGGGACCCCTACACCT
GGAGGAGGTGAAGAGGCACAAGTCCACATCTCAGGGACTGTGGTGGACCTATGTCATCAGCGTGGTG
TTCCGGCTGTTGTTGAGGCCGTCTTCATGTATGTCTTTATCTGCTCTACCCTGGCTATGCCATGGTGC
GGCTGGTCAAGTGCACGTCTACCCCTGCCCAACACAGTGGACTGCTTCGTGTCCCGCCCAACGAGAA
AACCGTCTTACCGTCTTCATGCTAGCTGCCTCTGGCATCTGCATCATCCTCAATGTGGCCGAGGTGGTG
TACCTCATCATCCGGCCTGTGCCCGCCGAGCCAGCCGCGCTCCAATCCACCTTCCCGAAGGGCTCGG
GCTTCGGCCACCGCCTCTCACCTGAATAACAAGCAGAATGAGATCAACAAGCTGCTGAGTGAGCAGGATGG
CTCCCTGAAAGACATACTGCGCCGACGCCCTGGCACCGGGGCTGGGCTGGCTGAAAAGAGCGACCCGCTGC
TCGGCCTGC

ACGCGTACGCGGCCGCTCGAGCAGAAACTCATCTCAGAAGAGGATCTGGCAGCAAATGATATCCTGGATT
ACAAGGATGACGACGATAAGGTTTAA



[View online »](#)

Protein Sequence: >RC211786 representing NM_001097642
Red=Cloning site Green=Tags(s)

MNWTGLYTLISGVNRHSTAIGRVLSVIFIFRIMVLVAAESVWGDEKSSFCNTLQPGCNSVCYDQFFP
 ISHVRLWSLQLILVSTPALLVAMHVAHQHIEKKMLRLEGHGDPHLHEEVKRHKVHISGTLWWTYVISV
 FRLLFEAVFMYVFYLLYPGYAMVRLVKCDVYPCPNTVDCFVSRPTEKTVFTVFMLAASGICILNVAEV
 YLIIRACARRAQRSSNPPSRKGSFGHRLSPEYKQNEINKLLEQDGLKIDILRRSPGTGAGLAEKSDRC
 SAC

TRTRPLEQKLISEEDLAANDILDYKDDDDKV

Chromatograms: https://cdn.origene.com/chromatograms/mk6067_h05.zip

Restriction Sites: SgfI-MluI

Cloning Scheme:



ACCN: NM_001097642

ORF Size: 849 bp

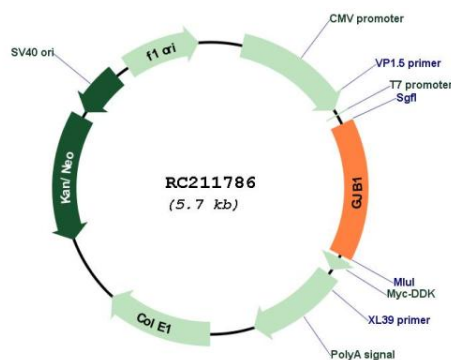
OTI Disclaimer: The molecular sequence of this clone aligns with the gene accession number as a point of reference only. However, individual transcript sequences of the same gene can differ through naturally occurring variations (e.g. polymorphisms), each with its own valid existence. This clone is substantially in agreement with the reference, but a complete review of all prevailing variants is recommended prior to use. [More info](#)

OTI Annotation: This clone was engineered to express the complete ORF with an expression tag. Expression varies depending on the nature of the gene.

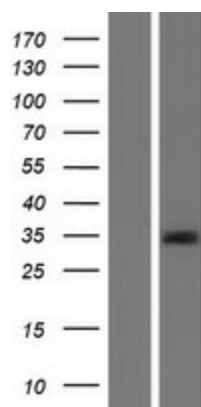
Components: The ORF clone is ion-exchange column purified and shipped in a 2D barcoded Matrix tube containing 10ug of transfection-ready, dried plasmid DNA (reconstitute with 100 ul of water).

Reconstitution Method:	<ol style="list-style-type: none">1. Centrifuge at 5,000xg for 5min.2. Carefully open the tube and add 100ul of sterile water to dissolve the DNA.3. Close the tube and incubate for 10 minutes at room temperature.4. Briefly vortex the tube and then do a quick spin (less than 5000xg) to concentrate the liquid at the bottom.5. Store the suspended plasmid at -20°C. The DNA is stable for at least one year from date of shipping when stored at -20°C.
RefSeq:	NM_001097642.2 , NP_001091111.1
RefSeq Size:	1596 bp
RefSeq ORF:	852 bp
Locus ID:	2705
UniProt ID:	P08034
Cytogenetics:	Xq13.1
Protein Families:	Druggable Genome, Ion Channels: Other, Transmembrane
MW:	31.8 kDa
Gene Summary:	This gene encodes a member of the gap junction protein family. The gap junction proteins are membrane-spanning proteins that assemble to form gap junction channels that facilitate the transfer of ions and small molecules between cells. According to sequence similarities at the nucleotide and amino acid levels, the gap junction proteins are divided into two categories, alpha and beta. Mutations in this gene cause X-linked Charcot-Marie-Tooth disease, an inherited peripheral neuropathy. Alternatively spliced transcript variants encoding the same protein have been found for this gene. [provided by RefSeq, Oct 2008]

Product images:



Circular map for RC211786



Western blot validation of overexpression lysate (Cat# [LY420416]) using anti-DDK antibody (Cat# [TA50011-100]). Left: Cell lysates from untransfected HEK293T cells; Right: Cell lysates from HEK293T cells transfected with RC211786 using transfection reagent MegaTran 2.0 (Cat# [TT210002]).